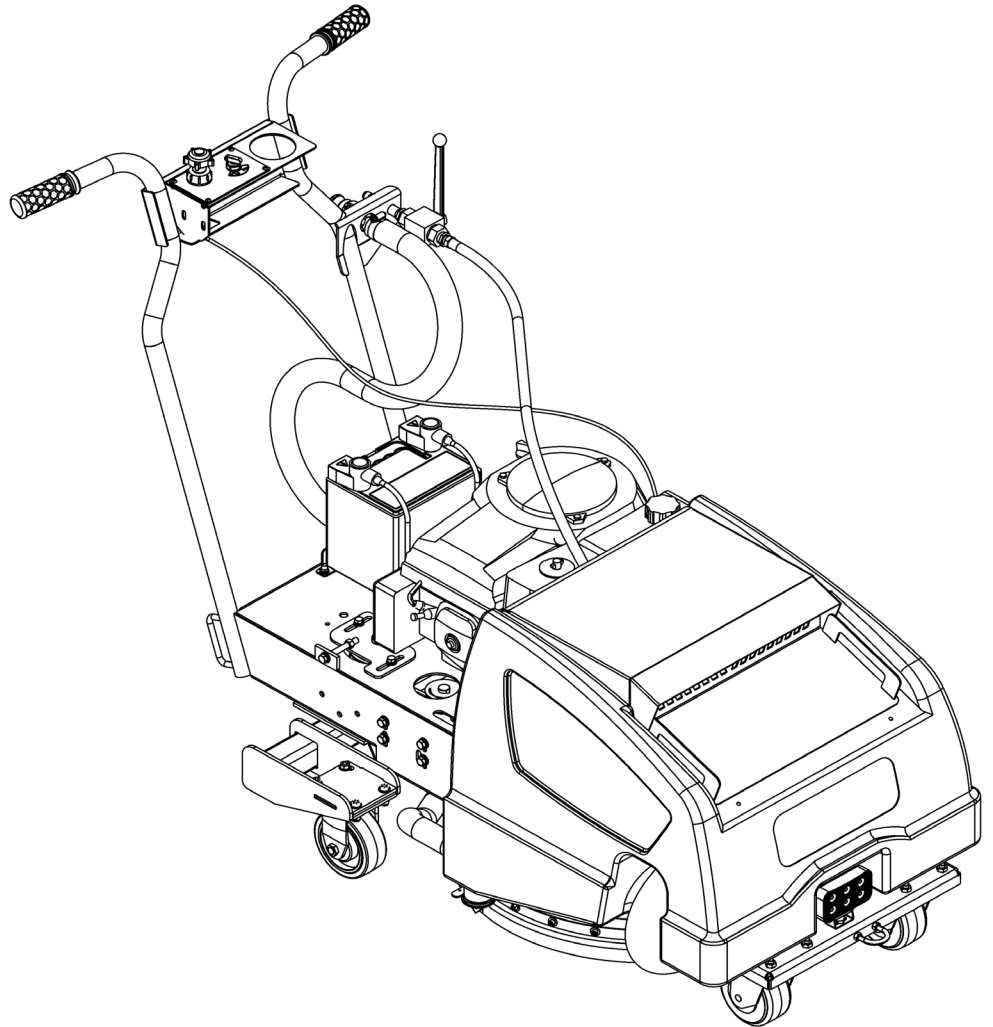


A Family Company Since 1967



Cyclone
TECHNOLOGY



CY210
PARTS LIST MANUAL V5

Faster, Greener, Cleaner  **The Cyclone Difference**

SWEEPERLAND.COM

800.626.7835

info@sweeperland.com



EQUIPMENT



PARTS



RENTALS



SERVICE



SUPPLIES

THIS PAGE INTENTIONALLY LEFT BLANK

TABLE OF CONTENTS:

DESCRIPTION	PAGE
Overview	2-3
Throttle and Electrical Systems.....	4-5
Drive System.....	6-9
Water Connections.....	10-11
Fan Assembly.....	12-13
Casting, Spindle, Brush, & Disk	14-15
Standard Return Pump Assembly	16-17
Macerator Return Pump Assembly	18-19
 Self-Propel Appendix	
Overview	20-21
Trans-Axle Mounting Components.....	22-23
Trans-Axle Drive Components	24-25
Drive System.....	26-27
Gear Select Assembly	28-29
Clutch Pulley Assembly	30-31
Step Tensioner Assembly.....	32-33

THIS PAGE INTENTIONALLY LEFT BLANK

HOW TO USE THIS MANUAL:

This manual is meant to be a guide for both ordering parts and understanding how they are assembled. This manual does not include all the pertinent information for proper assembly. Sealants, fastener torque specs and the like are not completely covered. This is not a service manual. If you are unsure whether you are assembling something correctly, please contact a Cyclone customer service technician for more information.

When using this manual please note that any description that includes the directions “right (RH)” or “left (LH)” refers to those directions from the perspective of an operator sitting in the seat of the machine. If any mention is made in a description of “driver’s side”, this refers to the vehicle’s left, when facing forward.

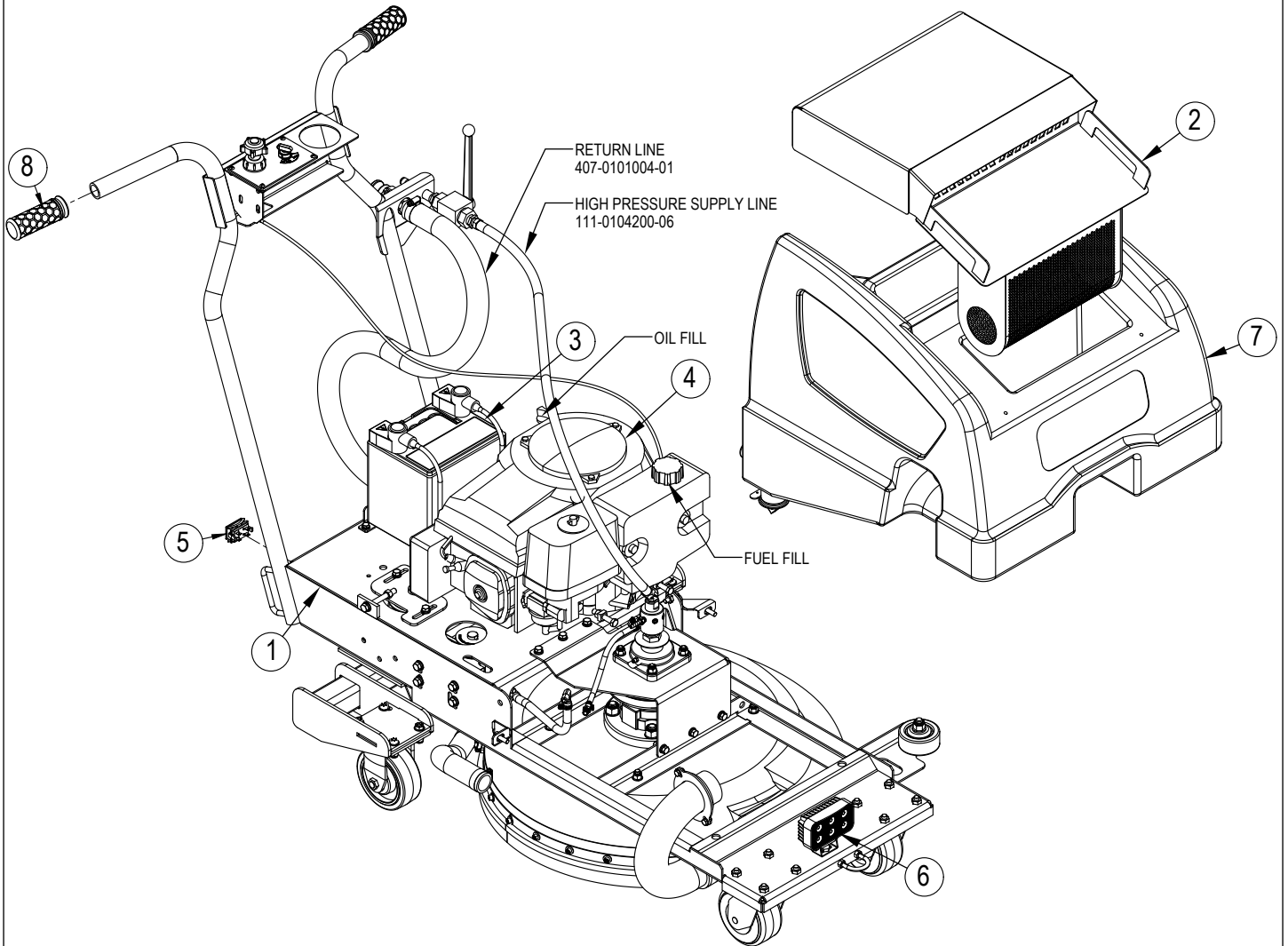
WHEN ORDERING PARTS

- * Use the Part numbers from the “Ref. No.” columns in this parts list.
- * Specify the model and serial number of the machine.
- * Use the space below to record the model and serial number for future reference.

Model

Serial No.

OVERVIEW



OVERVIEW

Item	Ref. No.	Qty.	Description
1	128-CY21002-01	1	CY210 Chassis Sub Asm. Weldment
2	128-CY21001-01	1	Weldment, Cover Asm. Insert
3	201-0201008-01	1	Battery, 12 V, 45ah, Wet
4	214-0100002-01	1	Engine, Gas, 13 Hp, 1" Od Vert Shaft, Elec. Start, Honda
5	217-0600003-01	1	Hour Meter, Electronic LCD, 6 Digit, Black, Tr5 Trailers
6	218-0712012-01	1	Worklight, 750 Lm, 12 V LED, CY210
7	231-0300023-16	1	Tank, Cyclone, Return 24"
8	240-0500002-08	2	Cyclone Handlebar Grips, 1-1/8" I.D X 1-1/4" O.D.

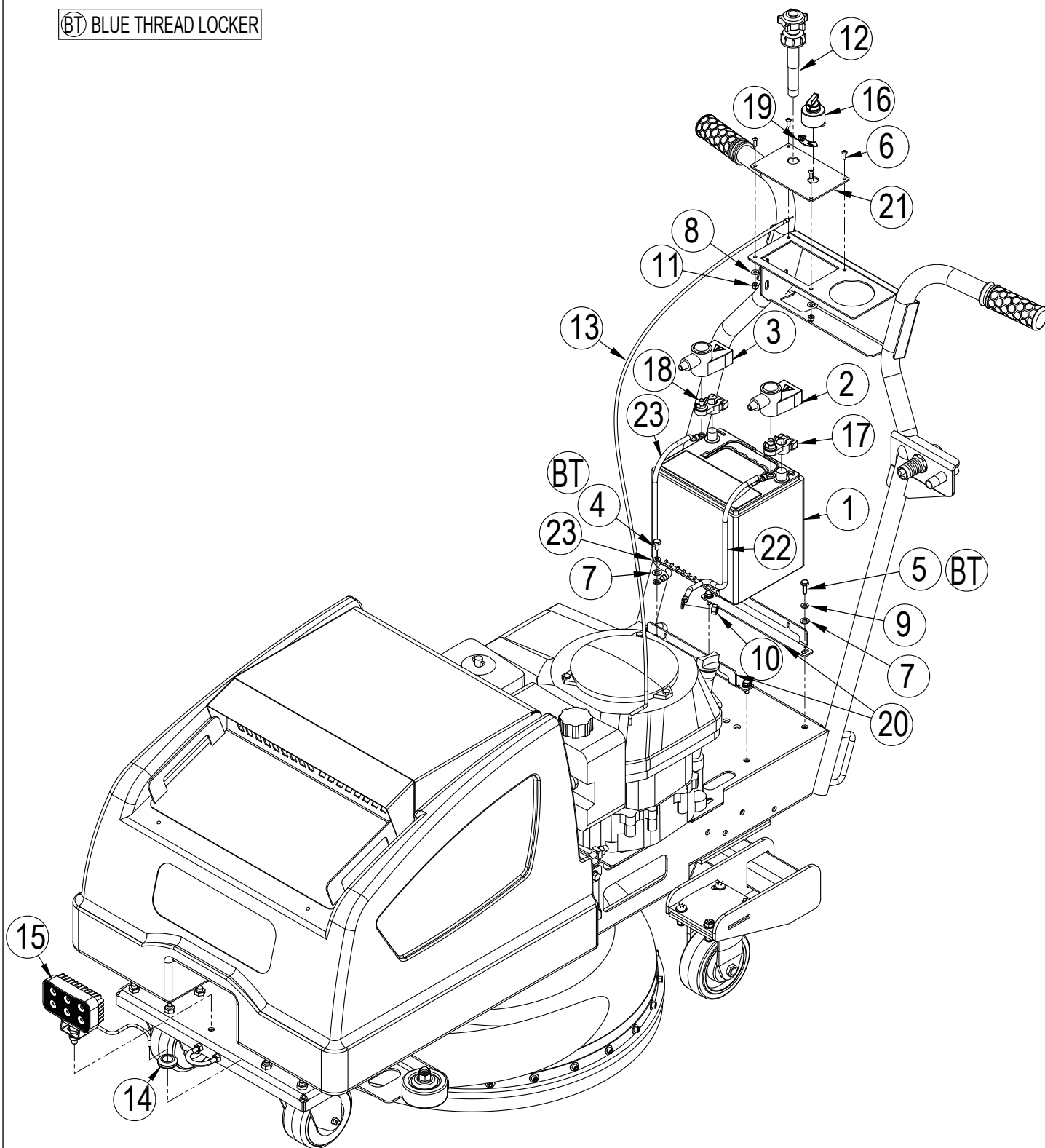
= Revised or new since last update

[] = Not Shown

* = Optional, Not Included

THROTTLE AND ELECTRICAL SYSTEMS

BT BLUE THREAD LOCKER



THROTTLE AND ELECTRICAL SYSTEMS

Item	Ref. No.	Qty.	Description
1	201-0201008-01	1	Battery, 12 V, 45Ah, Wet
2	201-0500007-10	1	Battery Terminal Cover, 1-2 Awg Red,
3	201-0500008-10	1	Battery Terminal Cover, 1-2 Awg Black,
4	204-0101001-07	1	Bolt, 1/4"-20 X 1/2", Cap, G8, Zinc
5	204-0101003-07	4	Bolt, 1/4"-20 X 3/4", Cap, G8, Zinc
6	204-0103012-02	4	Bolt, 10-32 X 1/2", BH, SS
7	204-0603002-07	5	Washer, 1/4", Flat, Hardened, SAE, Zinc
8	204-0603019-07	4	Washer, #10, Flat, SAE, Zinc
9	204-0604001-07	5	Washer, 1/4", Lock, Zinc
10	204-0703005-07	1	Nut, Hex, 3/8"-16, G8, Zinc
11	204-0704018-01	4	Nut, 10-32, Lock, Nylon, Zinc
12	208-0100003-01	1	Adjustment Head For Throttle Cable
13	208-0100004-02	1	Cable, Throttle, Vernier, 60"
14	215-0700006-01	1	Grommet, Push In Rubber
15	218-0712012-01	1	Worklight, 750 Lm, 12 V LED, CY210
16	218-1003001-01	1	Switch, Ignition, 12V Cyclone 13 & 24-Hp Honda
17	218-1303001-01	1	CY210 Pos. Battery Terminal 3/8 Stud
18	218-1303002-01	1	CY210 Neg. Battery Terminal
19	284-2100006-01	1	Decal, CY210 Key Position
20	304-1601031-01	2	Battery Tie Down
21	304-1601035-01	1	Control Plate, Gas, Vernier Cable, CY210
22	401-0301001-01	1	Battery Cable, CY210 Gas Mtr., Pos., 4awg
23	401-0304001-01	1	Battery Cable, CY210 Gas Mtr., Neg., 4awg

= Revised or new since last update

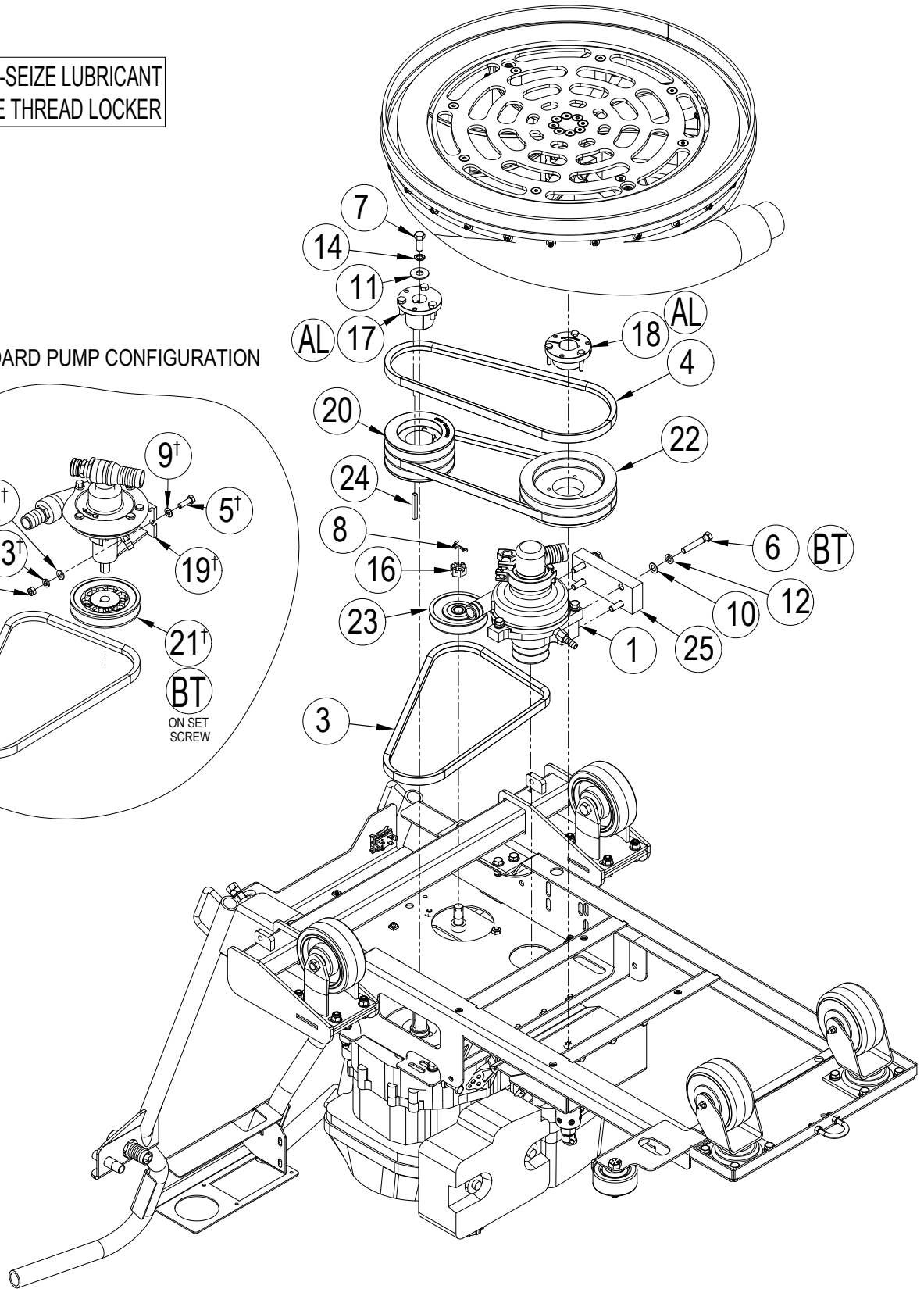
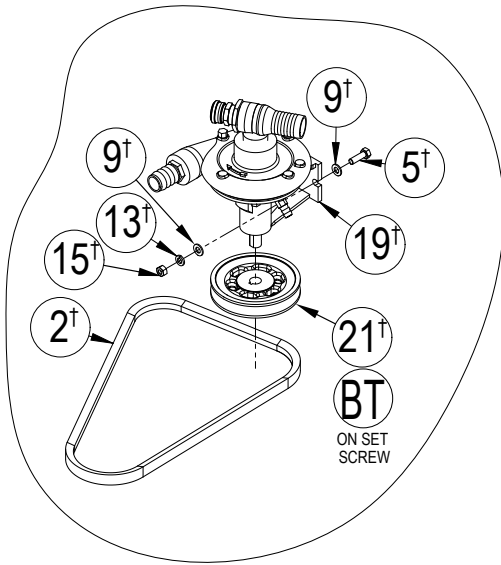
[] = Not Shown

* = Optional, Not Included

DRIVE SYSTEM

AL ANTI-SEIZE LUBRICANT
 BT BLUE THREAD LOCKER

STANDARD PUMP CONFIGURATION



DRIVE SYSTEM

Item	Ref. No.	Qty.	Description
1	104-0600001-01	1	Macerator Return Pump Assy
2†	203-0100004-01	1	Belt, V, BX41
3	203-0100007-01	1	Belt, V, BX39
4	203-0100041-01	2	Belt, V, BX38 - CY210 Spindle Drive
5†	204-0101014-07	2	Bolt, 5/16"-18 X 1", Cap, G8, Zinc
6	204-0101033-07	4	Bolt, 3/8"-16 X 2-1/4", Cap, G8, Plated
7	204-0101107-01	1	Bolt, 7/16"-20 X 1", G8, Zinc
8	204-0502004-01	1	Cotter Pin, 1/8" Dia X 1-1/4" Long, SS
9†	204-0603004-07	4	Washer, 5/16", Flat, Hardened, SAE, Zinc
10	204-0603006-07	4	Washer, 3/8", Flat, Hardened, SAE, Zinc
11	204-0603031-01	1	Washer, Flat, 7/16", 1/2" ID. X 1-1/4" OD
12	204-0604003-07	4	Washer, 3/8", Lock, Zinc
13†	204-0604006-07	2	Washer, Lock, 5/16", Zinc
14	204-0604040-07	1	Washer, Lock, 7/16", Zinc
15†	204-0703003-07	2	Nut, Hex, 5/16"-18, G8, Zinc
16	204-0703018-07	1	Nut, 5/8"-11, Slotted Nut, Zinc
17	207-0201006-01	1	Bushing, 1", Split Taper
18	207-1101005-01	1	Bushing, 1-1/4" Bore
19†	226-0300004-01	1	Return Pump With Pedestal, CY210
20	236-0200027-01	1	Sheave, 3-Groove Pulley, 4.75" O.D.
21†	236-0200032-01	1	Sheave, 1 Groove, 5/8" Bore
22	236-0300018-01	1	Sheave, 2 Groove, Prop Pump Driver
23	236-0600002-01	1	Idler Pulley, Tensioner Assy-CY210
24	320-0100572-01	1	Key, CY210, Engine Shaft, Cut, Length
25	320-0110002-01	1	Macerator Spacer (CY210)

= Revised or new since last update

[] = Not Shown

* = Optional, Not Included

† = Standard Return Pump Option Only

DRIVE SYSTEM (CONTINUED)

Item	Ref. No.	Qty.	Description
1	117-0000007-01	1	Roller Wheel, 3" X 1-1/4"
2	117-0000006-01	2	Wheel/Caster Asm., Swivel 5" X 2"
3	117-0000010-01	2	Caster, 5 X 2 Rigid
4	128-CY21006-01	1	Weldment CY210 Belt Tensioner
5	128-CY21017-01	1	CY210 Caster Axle Assy
6	202-0101003-01	1	Top Bearing, Ball 1-1/4" Bore
7	202-0201003-01	1	Bottom Bearing, Roller, 2" Bore
8	204-0101014-07	6	Bolt, 5/16-18 X 1", Cap, G8, Zinc
9	204-0101028-07	18	Bolt, 3/8"-16 X 1" Cap, G8, Zinc
10	204-0101029-07	8	Bolt, 3/8"-16 X 1-1/4", Cap, G8, Zinc
11	204-0101031-07	2	Bolt, 3/8"-16 X 1-3/4", Cap, G8, Zinc
12	204-0101045-07	2	Bolt, 3/8"-16 X 2", G8, Zinc
13	204-0101154-07	1	Bolt, 3/8"-16 X 3", Full Thread, G8, Zinc
14	204-0101162-07	2	Bolt, 5/16"-18 X 7/8", G8, Zinc
15	204-0105012-02	4	Bolt, 3/8"-16 X 1-1/4", FH, G8
16	204-0105017-20	4	Bolt, 9/16"-12 X 2", FH, Np Bearing
17	204-0106002-01	1	U-Bolt, 5/16-18 X 1", S.S.
18	204-0603004-07	8	Washer, 5/16", Flat, Hardened SAE, Zinc
19	204-0603006-07	55	Washer, 3/8", Flat, Hardened SAE, Zinc
20	204-0603011-02	4	Washer, 9/16", Flat, A+N, S/S
21	204-0603011-07	1	Washer, 1/2", Flat, Hardened SAE, Zinc
22	204-0604003-07	11	Washer, 3/8", Lock, Zinc
23	204-0604006-07	8	Washer, Lock, 5/16"
24	204-0703003-07	2	Nut, Hex, 5/16"-18, G8, Zinc
25	204-0703005-07	2	Nut, Hex, 3/8"-16, G8, Zinc
26	204-0704004-07	26	Nut, 3/8"-16, Lock, Nylon, Zinc
27	204-0704006-07	1	Nut, 1/2"-13, Lock, Nylon, Zinc
28	204-0704008-07	4	Nut, 9/16"-12, Lock, Nylon, Zinc
29	214-0100002-01	1	Engine, Gas, 13 HP, 1" Od Vert Shaft, Elect. Start, Honda
30	221-0500001-01	1	Hose, Drain CY210
31	304-1601015-01	1	Spindle Mount Plate Weldt-CY210
32	313-0200003-01	1	Slinger, Rotating Union- 2.5" OD, Copper

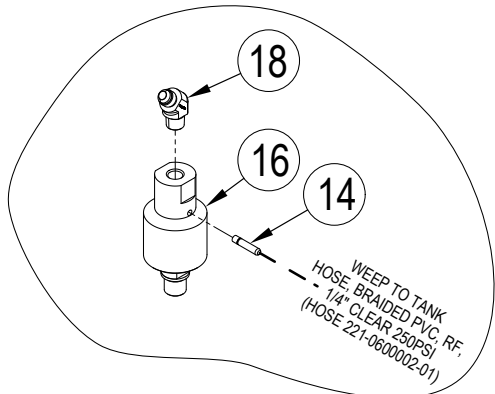
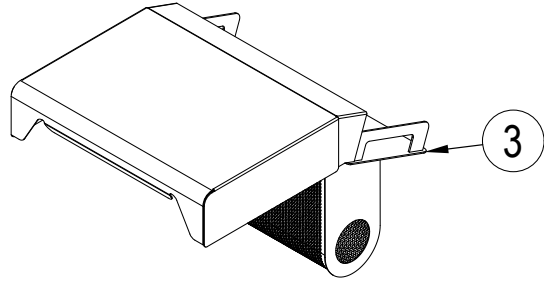
= Revised or new since last update

[] = Not Shown

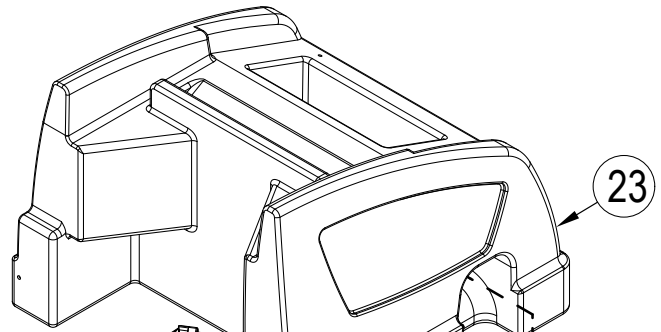
* = Optional, Not Included

WATER CONNECTIONS

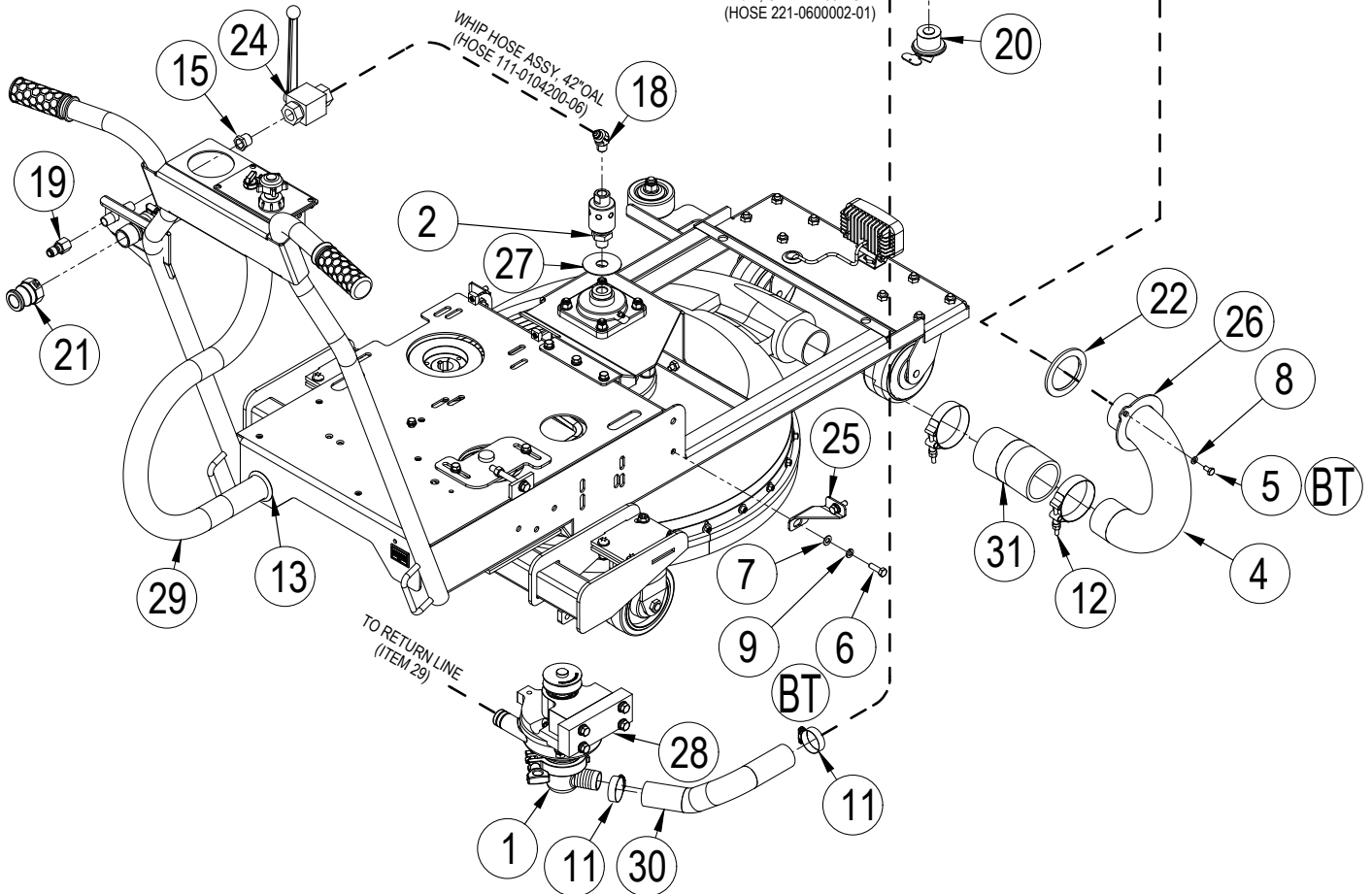
BT BLUE THREAD LOCKER



MOSMATIC UNION OPTION
(115-000007-01)



TO RETURN PUMP
HOSE, BRAIDED PVC, RF,
1/4" CLEAR 250 PSI
(HOSE 221-060002-01)



ANAEROBIC SEALANT AND TEFLON TAPE ON ALL WATER FITTINGS EXCEPT ITEM 18

WATER CONNECTIONS

Item	Ref. No.	Qty.	Description
1	104-0600001-01	1	Macerator Return Pump Assy
2	115-0000009-02	1	Rotating Union, Deublin, 3/4"-16 X 3/8" FPT
3	128-CY21001-01	1	Weldment, Cover Asm. Insert
4	128-CY21008-01	1	Weldt, CY210 Port Tube Assy
5	204-0101001-07	2	Bolt, 1/4"-20 X 1/2", Cap, G8, Zinc
6	204-0101014-07	4	Bolt, 5/16"-18 X 1", Cap, G8, Zinc
7	204-0603004-07	4	Washer, 5/16", Flat, Hardened SAE, Zinc
8	204-0604001-07	2	Washer, 1/4", Lock, Zinc
9	204-0604006-07	4	Washer, Lock, 5/16"
10	204-1005005-01	2	Clamp, Worm-Drive, #6
11	204-1005010-01	4	Clamp, Worm-Drive, #20
12	204-1007007-01	2	Clamp, T-Bolt, #300
13	215-0700007-01	1	Grommet, Push-In, Rubber, 1.75" Hole
14†	216-0101027-02	1	Fitting, ST, 1/8"MPT X 1/4"ID Barb, SS, Union Weep
15	216-0102015-01	2	Fitting, 1/2"MPT X 3/8"FPT Bushing, Steel
16†	216-0102099-02	1	Rotating Union, 5k, Housing Mosmatic
17	216-0201016-04	1	Fitting, 90, 1/4" MPT X 3/8"ID Barb, Brass
18	216-0310021-01	1	Fitting, 45, #6MJIC X 3/8" MPT, Steel
19	216-0805003-02	1	Fitting, Qu. Coupler. Plug X 3/8" FPT, SS
20	216-0814007-01	1	Plug, Expand, 1-1/2" Cyc Return Tank CY210
21	216-1300011-03	1	Fitting, ST, 1"MCAM X 1"FPT, Alum.
22	228-0100080-01	1	Seal, Gasket Port Tube CY210
23	231-0300023-16	1	Tank, Cyclone, Return 24", Roto-Molded
24	235-0100009-01	1	Valve, Ball 1/2"FPT, 2 Way, 7250 PSI.
25	304-1501083-01	2	Tank Clip CY210
26	304-1602001-01	1	Plate, 10-G, Port Tube Mntg Flange, SS
27	313-0200003-01	1	Slinger, Rotating Union- 2.5" OD Copper
28	320-0110002-01	1	Macerator Spacer (CY210)
29	407-0101004-01	1	Hose, To Head
30	407-0101004-02	1	Hose, Cut Bellows 1-1/4" ID X 13" Long CY210
31	407-0101005-40	1	Hose-Cut, Bellows, 2-1/2"ID X 5"L, (Gates) Tube/Pipe Connect

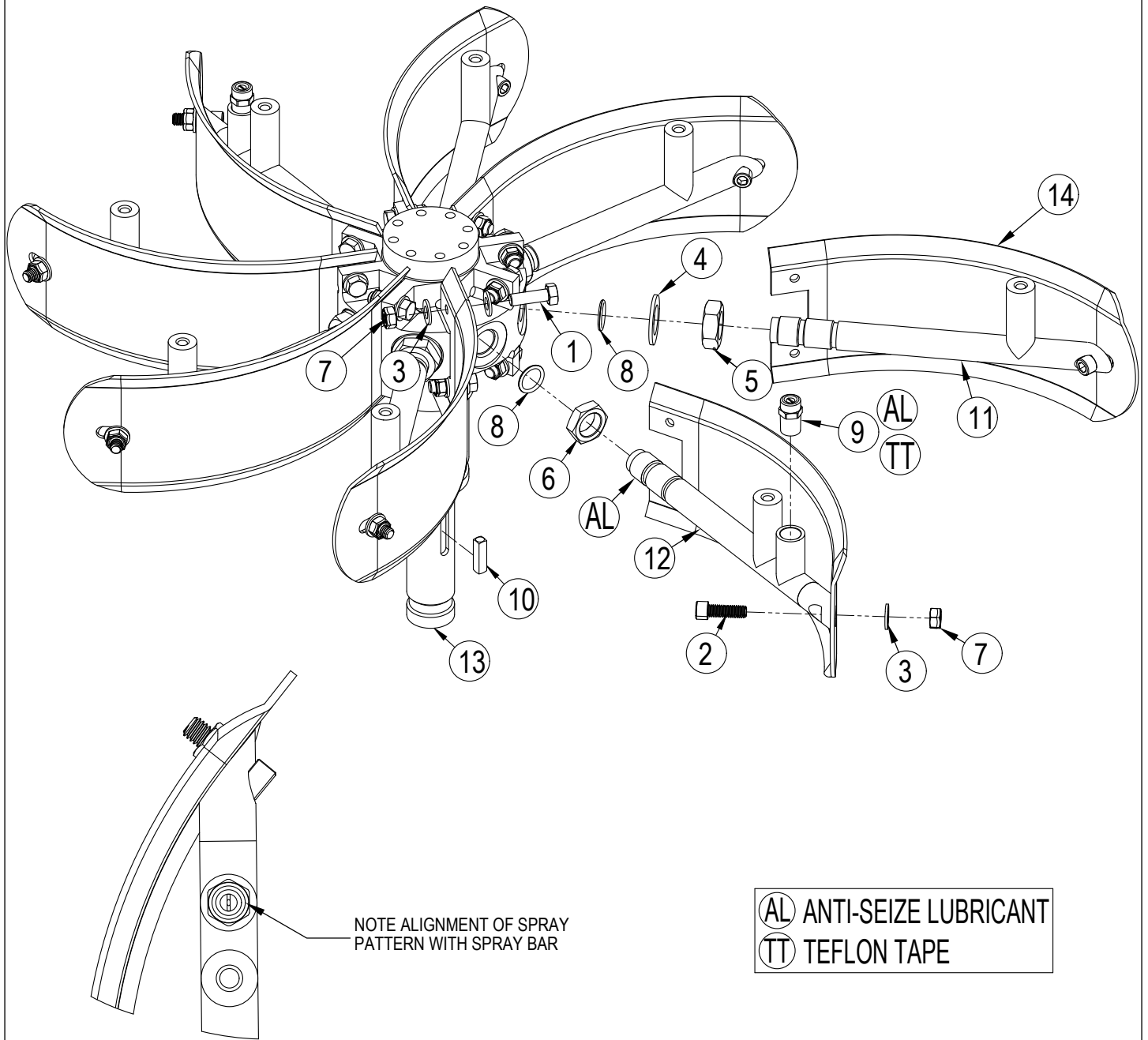
= Revised or new since last update

[] = Not Shown

* = Optional, Not Included

† = Mosmatic Union Only

FAN ASSEMBLY



FAN ASSEMBLY

Item	Ref. No.	Qty.	Description
1	204-0101014-07	16	Bolt, 5/16"-18 X 1", Cap, G8, Zinc
2	204-0104035-02	8	Bolt, 5/16"-18 X 1", SH, SS
3	204-0603004-07	40	Washer, 5/16", Flat, Hardened SAE, Zinc
4	204-0603014-02	6	Washer, 3/4", Flat, A+N, S/S
5	204-0702003-07	6	Nut, Jam, 3/4"-16, Rh, Zinc
6	204-0702005-07	2	Nut, Jam, Zinc, Blue
7	204-0704003-07	24	Nut, 5/16"-18, Lock, Nylon, Zinc
8	228-0102006-01	8	O-Ring, Spray Bar
9	230-0200014-13	2	Nozzle 1/4 Meg. 40-Deg. 2.5 GPM Ceramic Insert
10	266-0100006-01	1	Keyway, 1/4" X 1" Long, Shaft, Spray Head
11	303-0102014-01	6	Blade Bar, 24", 10k PSI, Cyclone LP. SS
12	303-0102016-01	2	Cyclone Spray Bar, 24 In., 10 K PSI
13	313-0200001-10	1	Spindle, Cyclone, 2"ID X 1-1/4" Dia. 3/4"-16 SS
14	316-0100002-01	8	Blade, Cyclone CS 24 Inch

Additional Components Available

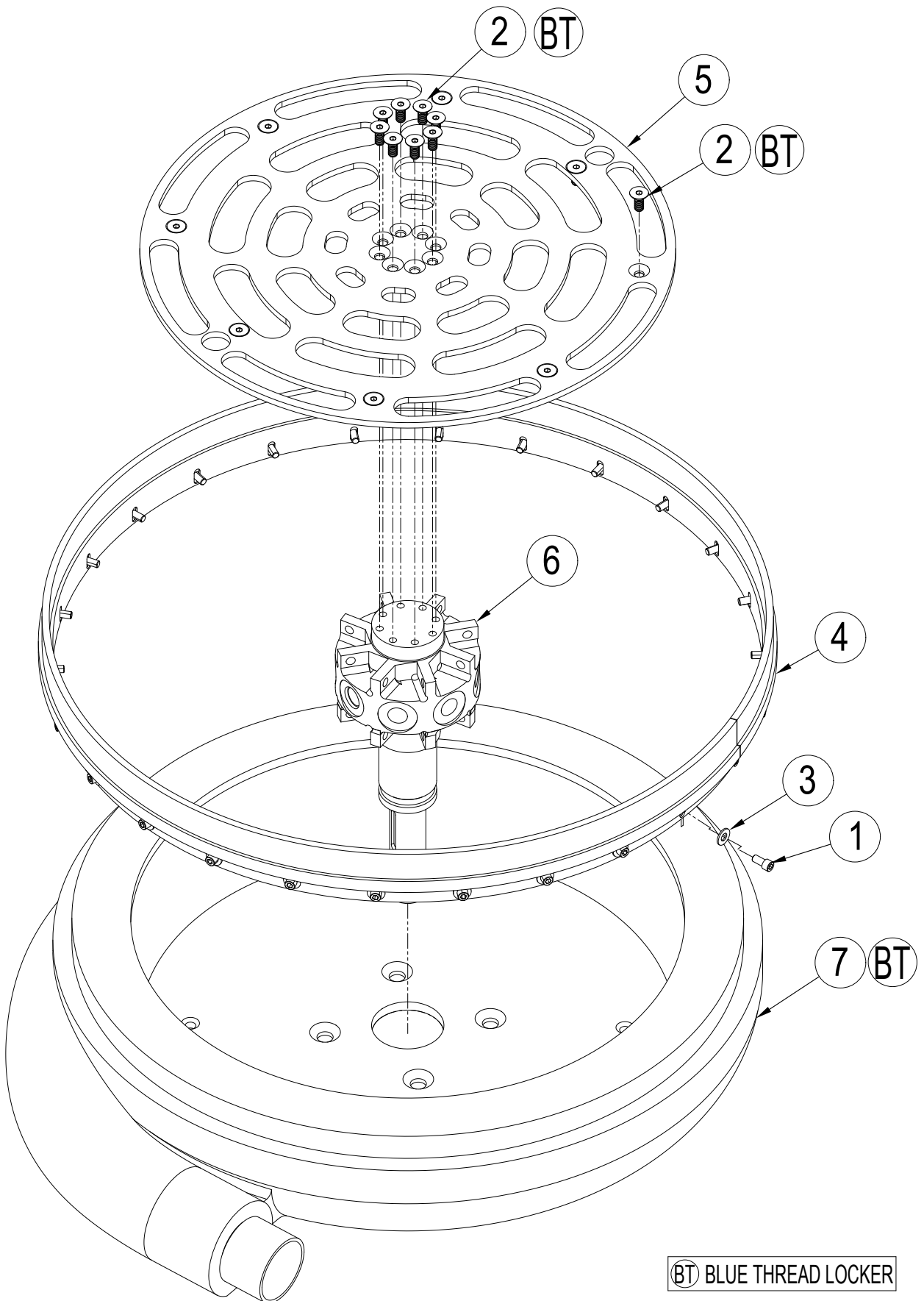
1	116-CYCL004-01	Kit, CY210 Counter Sunk Disk And Blade, Fastening
2	230-0200015-13	Nozzle 1/4 Meg. 40-Deg. 3.0 GPM Ceramic Insert
3	230-0200016-13	Nozzle 1/4 Meg. 40-Deg. 3.5 GPM Ceramic Insert
4	230-0200017-13	Nozzle 1/4 Meg. 40-Deg. 4.0 GPM Ceramic Insert
5	230-0200018-13	Nozzle 1/4 Meg. 40-Deg. 4.5 GPM Ceramic Insert
6	230-0200019-13	Nozzle 1/4 Meg. 40-Deg. 5.0 GPM Ceramic Insert
7	230-0200020-13	Nozzle 1/4 Meg. 40-Deg. 2.0 GPM Ceramic Insert

= Revised or new since last update

[] = Not Shown

* = Optional, Not Included

CASTING, SPINDLE, BRUSH & DISK



CASTING, SPINDLE, BRUSH & DISK

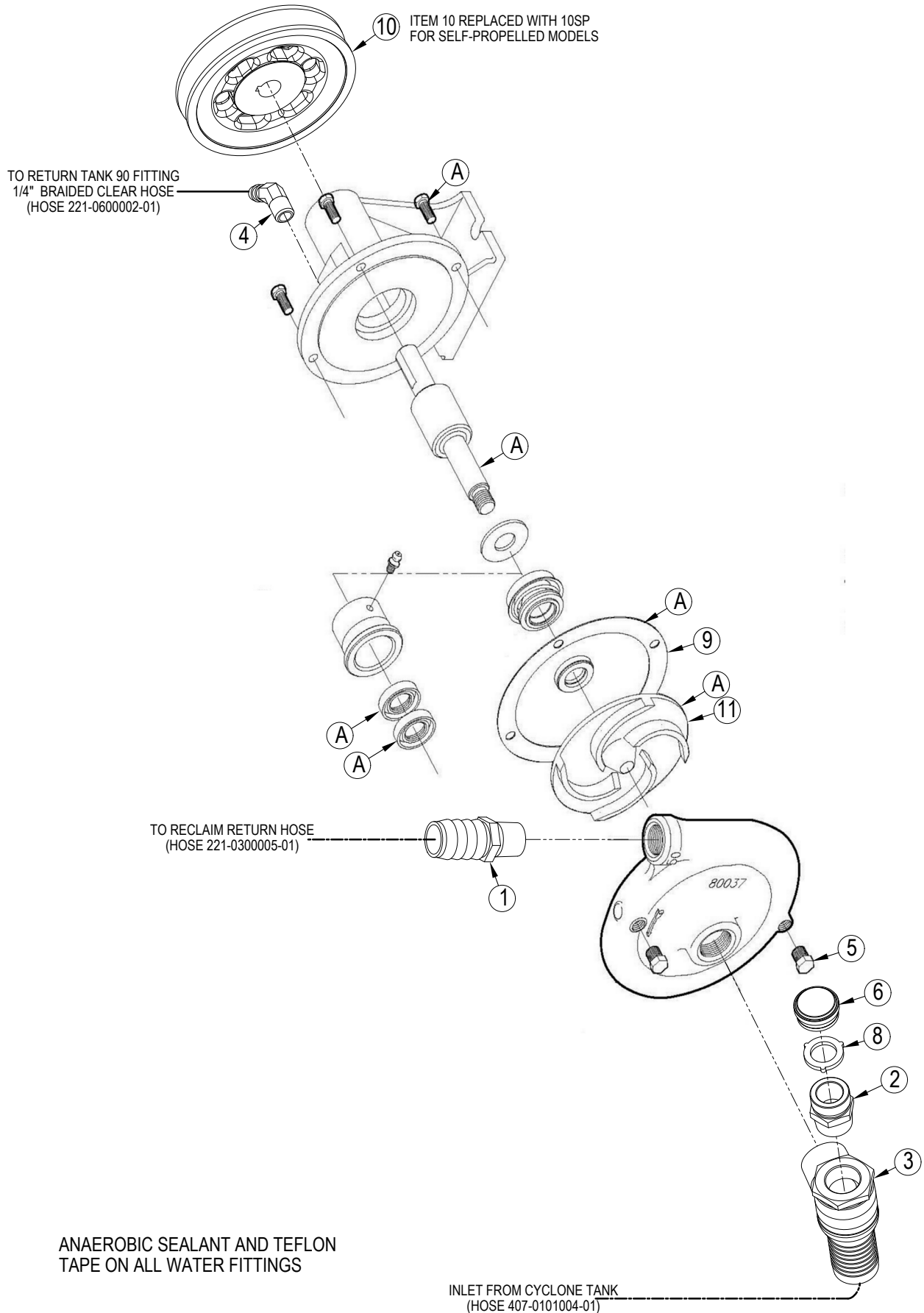
Item	Ref. No.	Qty.	Description
1	204-0104003-20	26	Bolt, 1/4"-20 X 1/2", SH, G8, NP
2	204-0105031-07	16	Bolt, 5/16"-18 X 3/4", FH, CS, Alloy, Zinc
3	204-0603003-07	26	Washer, 1/4", Flat, Zinc
4	205-0115003-01	1	24" Cyclone Brush, Slotted & Rolled
5	304-0103004-02	1	Plate, 1/4", Cyclone Disk, 24" Standard
6	313-0200001-10	1	Spindle, Cyclone, 2"ID X 1-1/4" Dia. 3/4"-16 SS
7	317-0301024-01	1	Cyclone, 24" Housing, Alum.

= Revised or new since last update

[] = Not Shown

* = Optional, Not Included

STANDARD RETURN PUMP ASSEMBLY



STANDARD RETURN PUMP ASSEMBLY

Item	Ref. No.	Qty.	Description
1	216-0101010-04	1	Fitting 3/4"MPT X 1" Barb, Brass
2	216-0102074-01	1	Fitting St. 3/4"MPT, Non-Swivel, Grdn Hose
3	216-0201023-02	1	Weldment, Standard Pump 90 Deg. Fitting
4	216-0301001-04	1	Fitting, 45, 1/4"MPT X 3/8"ID Barb. Brass
5	216-0802019-01	2	Fitting, St, Plug, 1/8", Hex-Head, Steel
6	216-1300032-04	1	Fitting, St. Cap, Brass, BGH-FGH-Cap
7	226-0300004-01	1	Return Pump With Pedestal, CY210
8	228-3000007-01	1	Seal, Gasket 3/4" GHT. Adptr. Standard Pump
9	228-3100010-01	1	Gasket, Standard Pump
10	236-0200032-01	1	Sheave, 1 Groove, 5/8" Bore
[10SP]	236-0200046-01	1	Sheave, 1 Groove, BK36 X 5/8" Bore
11	266-0100001-01	1	Impeller, Sweeper Pump, Standard Pump

Rebuild Kits

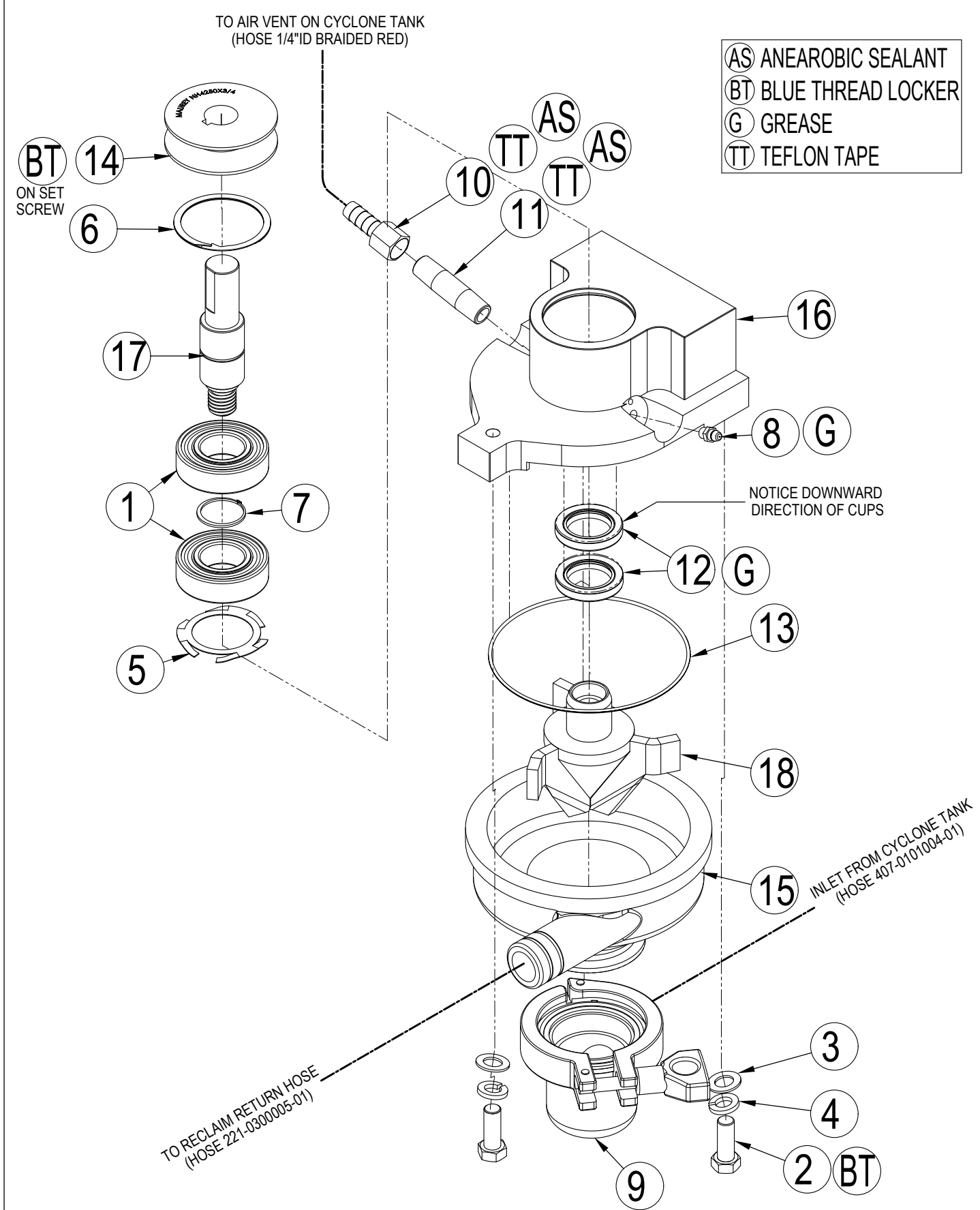
A	116-4500034-011	Kit, Rebuild, Price/Charge Pump
B	116-4500035-011	Kit, Rebuild W/ Impeller, Price/Charge Pump

= Revised or new since last update

[] = Not Shown

MACERATOR RETURN PUMP ASSEMBLY

- (AS) ANEAROBIC SEALANT
- (BT) BLUE THREAD LOCKER
- (G) GREASE
- (TT) TEFLON TAPE



MACERATOR RETURN PUMP ASSEMBLY

Item	Ref. No.	Qty.	Description
1	202-0108013-01	2	Radial Ball Bearing
2	204-0101028-07	3	Bolt, 3/8-16 X 1" Cap Gr8 Z
3	204-0603006-07	3	Washer, 3/8", Flat, Hardened SAE Zinc
4	204-0604003-07	3	Washer, 3/8", Lock, Zinc
5	204-0608002-01	1	Washer, Wave 1.359" I.D., Macerator Pump
6	204-1600006-01	1	Spiral Ring, Internal 2" Dia., Macerator Pump
7	204-1600007-01	1	Snap Ring For 63/64" Shaft Dia.
8	216-0136001-01	1	Fitting, St, 1/4"-28 X Grease Zerk
9	216-0229001-02	1	Fitting, 90, Flange 2"ID X 1-1/4" Barb SS, W/ Seal & Clamp
10	216-0238021-04	1	Fitting, St, 1/4" FPT X 3/8" ID Barb, Brass
11	216-1000082-01	1	Fitting, Nipple, 1/4" X 2" L, Sch40, Steel
12	228-0100023-01	2	Shaft Seal, Macerator Pump, Oil Seal
13	228-0100029-01	1	O Ring, Macerator Pump Housing
14	236-0200025-01	1	Pulley, Macerator Pump
15	250-1000001-01	1	Housing, Btm., Macerator Pump- Mchnd.
16	250-1000002-01	1	Housing, Bearing, Macerator, Return Pump
17	264-0000007-01	1	Shaft, Top Macerator Pump
18	264-0700007-01	1	Shaft Component, Center Impeller, Macerator Pump

Rebuild Kits

- A 116-0000027-01 Kit, Macerator Repair Kit- Minor (Items: 1, 5, 6, 7, 12, 13)
- B 116-0000028-01 Kit, Macerator Repair Kit- Major (Items: 1, 5, 6, 7, 12, 13, 18)

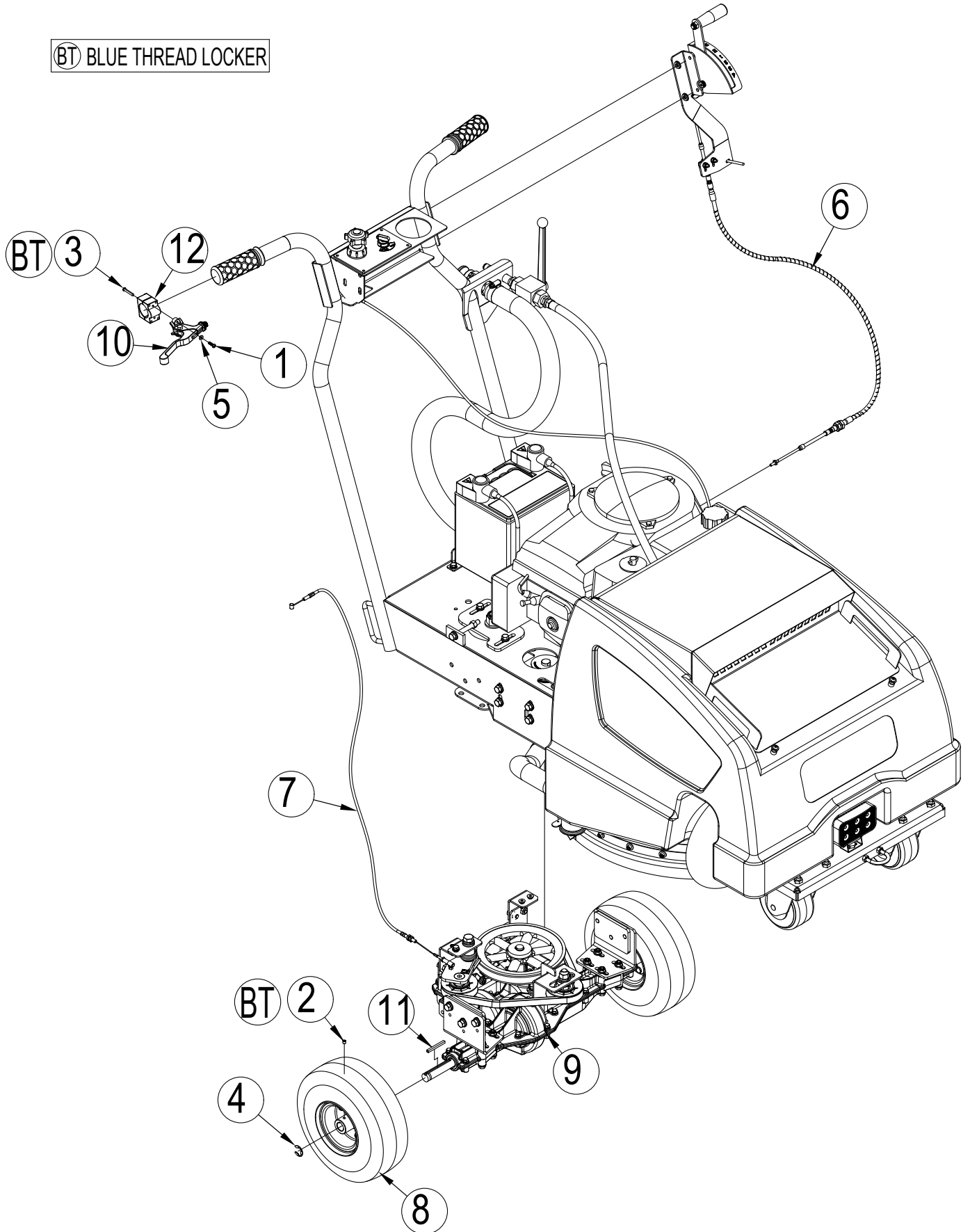
= Revised or new since last update

[] = Not Shown

* = Optional, Not Included

SELF-PROPEL OVERVIEW

BT BLUE THREAD LOCKER



SELF-PROPEL OVERVIEW

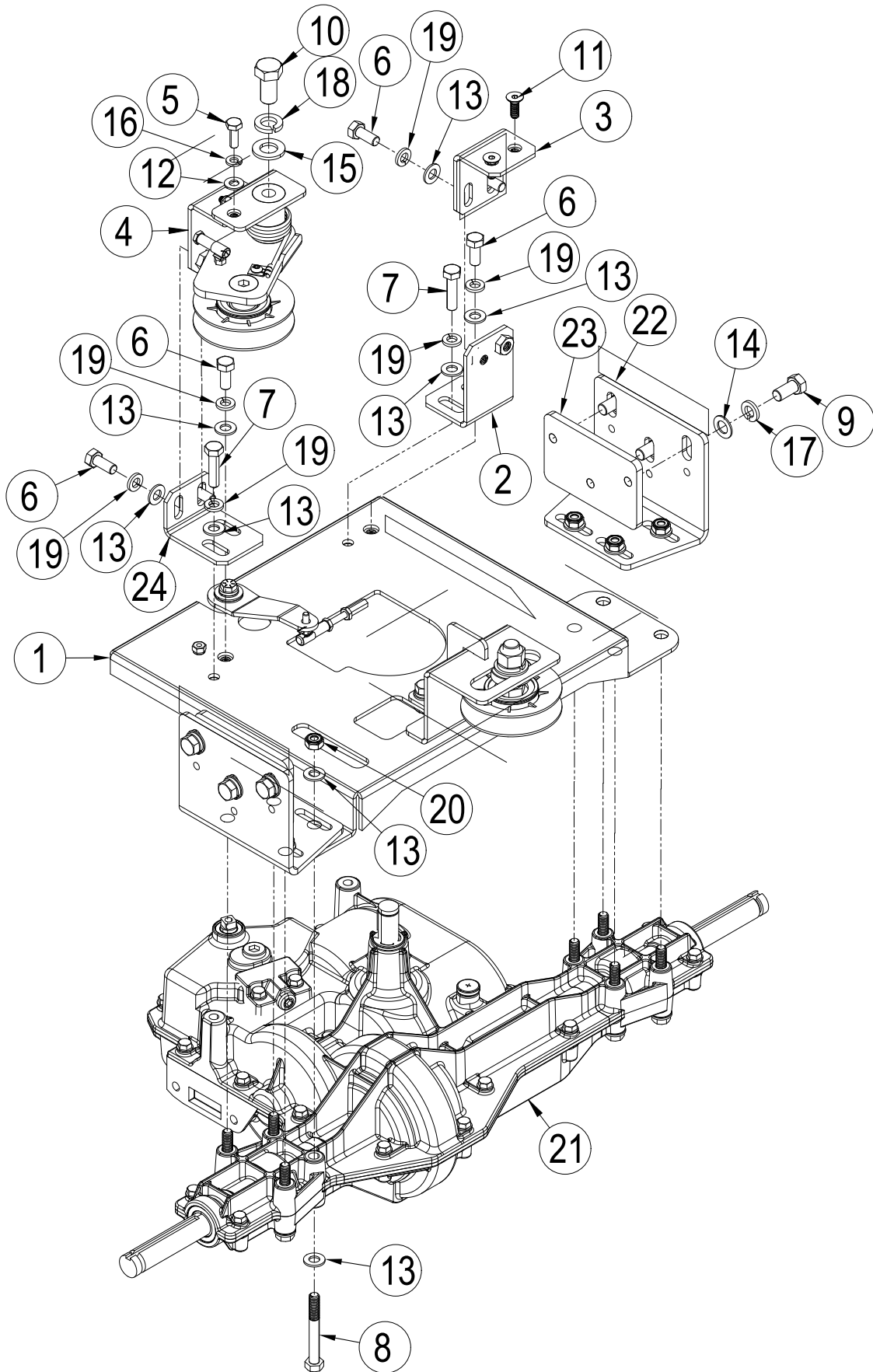
Item	Ref. No.	Qty.	Description
1	204-0101168-02	2	Bolt, 8-32 X 3/4", BH, SS
2	204-0101172-02	2	Screw, Set, Cupped, 1/4"-20 X 0.25"L, SS
3	204-0103015-07	4	Bolt, 10-32 X 1.25 BH, Zinc
4	204-1600021-01	2	Snap Ring, 3/4" Shaft X .56" W, SS
5	204-2500020-02	2	Washer, Flat #8 SS
6	208-0100021-01	1	Shifter Cable Asm., Self-Propel
7	208-0100022-01	1	Clutch Cable, Cy210, Self-Propel
8	232-0200009-03	2	Tire and Wheel Assy. Self-Propel, Foam Filled
9	237-0100001-01	1	Transaxle, CY210, 4-Speed
10	240-0900004-01	1	Clutch Handle, Cy210, Self-Propel
11	264-0000017-01	2	Keyway, 3/16", Transaxle to Wheel, Self-Propel
12	304-3000023-01	1	CY210 Clutch Perch

= Revised or new since last update

[] = Not Shown

* = Optional, Not Included

SELF-PROPEL TRANS AXLE MOUNTING COMPONENTS



SELF-PROPEL TRANS AXLE MOUNTING COMPONENTS

Item	Ref. No.	Qty.	Description
1	128-CY21030-01	1	Main Subplate Weldt, Self-Propel
2	128-CY21033-01	1	Bracket, Lower Half, Height Adj,
3	128-CY21034-01	1	Bracket, Upper Half, Support, Weldt
4	128-CY21035-01	1	Clutch Belt Actuator Assm With Adj. Bracket
5	204-0101003-07	1	Bolt, 1/4"-20 X 3/4", Cap, G8, Zinc
6	204-0101014-08	9	Bolt, 5/16"-18 X 3/4", G8, Zinc
7	204-0101015-07	2	Bolt, 5/16"-18 X 1-1/4", Cap, G8, Zinc
8	204-0101020-07	8	Bolt, 5/16"-18 X 2-1/2", Cap, G8, Zinc
9	204-0101027-07	6	Bolt, 3/8"-16 X 3/4", Cap, G8, Zinc
10	204-0101096-07	1	Bolt, 1/2"-13 X 1", G8, Zinc
11	204-0105024-01	2	Bolt, 1/4"-20 X 3/4", FH, SS
12	204-0603002-07	1	Washer, 1/4", Flat, Hardened, SAE, Zinc
13	204-0603004-07	27	Washer, 5/16", Flat, Hardened, SAE, Zinc
14	204-0603006-07	6	Washer, 3/8", Flat, Hardened, SAE, Zinc
15	204-0603011-07	1	Washer, 1/2", Flat, Hardened, SAE, Zinc
16	204-0604001-07	1	Washer, 1/4", Lock, Zinc
17	204-0604003-07	6	Washer, 3/8", Lock, Zinc
18	204-0604005-07	1	Washer, Lock, 1/2"
19	204-0604006-07	11	Washer, Lock 5/16"
20	204-0704003-07	8	Nut, 5/16"-18, Lock, Nylon, Zinc
21	237-0100001-01	1	Transaxle, CY210, 4-Speed
22	304-3000013-01	2	Transaxle Left Side Axle Mount Brkt.
23	304-3000024-01	2	Axle Mount Nut Plate, CY210 Self Propel
24	304-4000007-01	1	Bracket, Height Adj. Idler, Drive Pulley

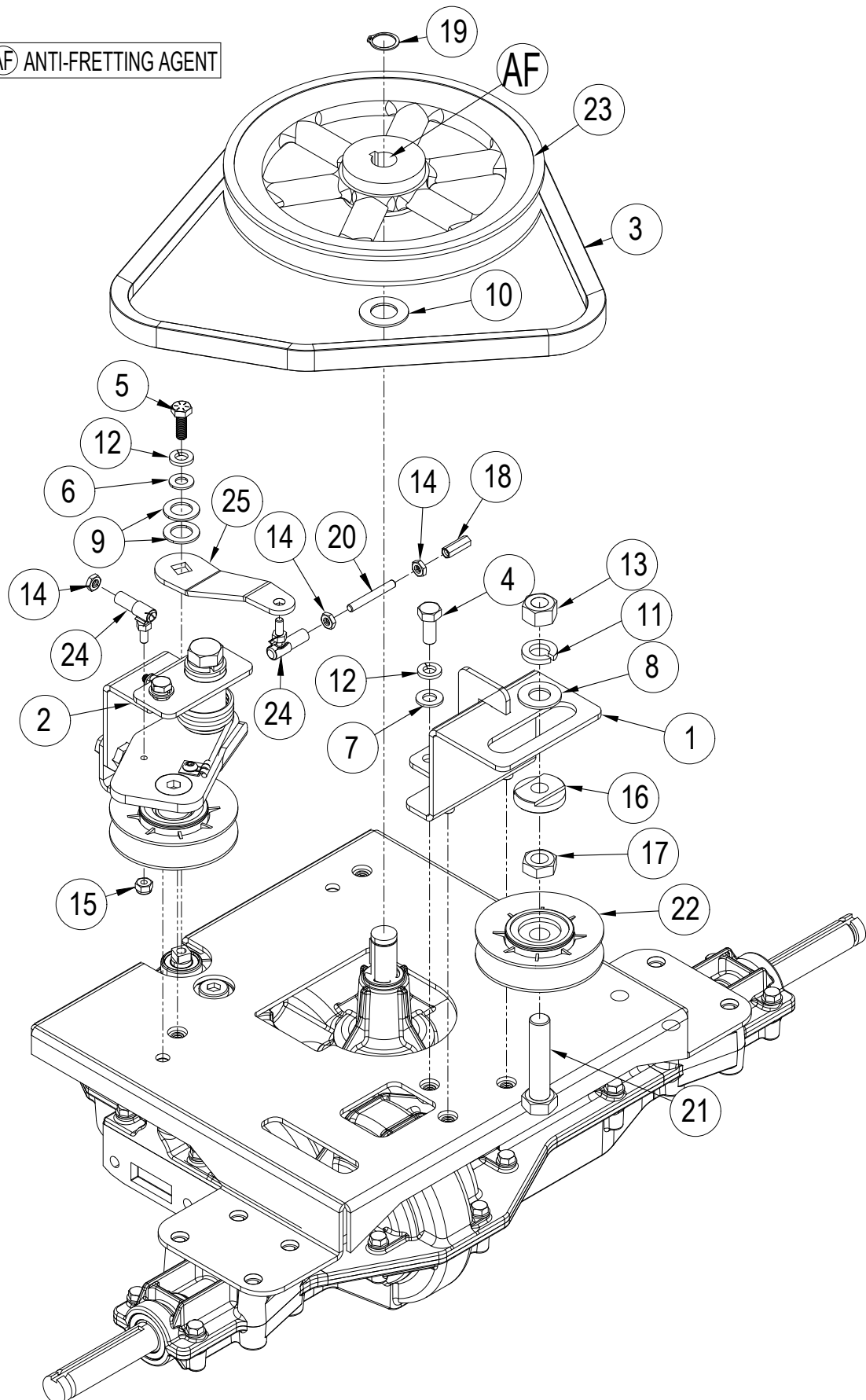
= Revised or new since last update

[] = Not Shown

* = Optional, Not Included

SELF-PROPEL DRIVE COMPONENTS

ⓐ ANTI-FRETTING AGENT



SELF-PROPEL DRIVE COMPONENTS

Item	Ref. No.	Qty.	Description
1	128-CY21031-01	1	Bracket, Idler, Take-up, Weldt
2	128-CY21035-01	1	Clutch Belt Actuator Asm. With Adj. Bracket
3	203-0100071-01	1	Belt, B35, Ag-Belt
4	204-0101014-08	3	Bolt, 5/16"-18 X 3/4", G8, Zinc
5	204-0101071-07	1	Bolt, 1/4"-28 X 3/4", Cap, G8, Zinc
6	204-0603002-07	1	Washer, 1/4", Flat, Hardened, SAE, Zinc
7	204-0603004-07	3	Washer, 5/16", Flat, Hardened, SAE, Zinc
8	204-0603010-07	1	Washer, 1/2", Flat, Hardened, SAE, Zinc
9	204-0603037-02	2	Washer, 1/2", Flat, A+N, S/S
10	204-0603039-02	1	Washer, 5/8" X 1.18"OD X .055"W, SS, AN
11	204-0604005-07	1	Washer, Lock, 1/2"
12	204-0604006-07	4	Washer, Lock, 5/16"
13	204-0703007-07	1	Nut, 1/2"-13, G8, Zinc
14	204-0703021-01	3	Nut, 10-32, Hex, Zinc
15	204-0704018-01	1	Nut, 10-32, Lock, Nylon, Zinc
16	204-0717005-01	1	Spacer, Pulley, Idler #2 Self Propel, Tee Slot
17	204-0717006-01	1	Nut, 1/2"-13, Jam, G8, Zinc
18	204-1202004-01	1	Threaded Standoff 1/4" Hex X .75" Lng.
19	204-1600022-01	1	Snap Ring, External, 5/8" Shaft X 0.39"
20	204-2100009-01	1	Threaded Rod, 10-32 X 1.5" Lg. 18-8 SS
21	204-2500034-01	1	Bolt, 1/2"-13 X 2-1/4", Fully Threaded, G8, Zinc
22	236-0200045-01	1	Pulley, Idler, B-Belt, 3.1" X 0.5" Bore
23	236-0700003-01	1	Sheave, 5/8" Bore X 7.75" Dia.
24	281-1201005-01	2	Ball Joint, 10-32 Push Pull Cable
25	304-3000003-01	1	Lever, Shift CY210 Transaxle

= Revised or new since last update

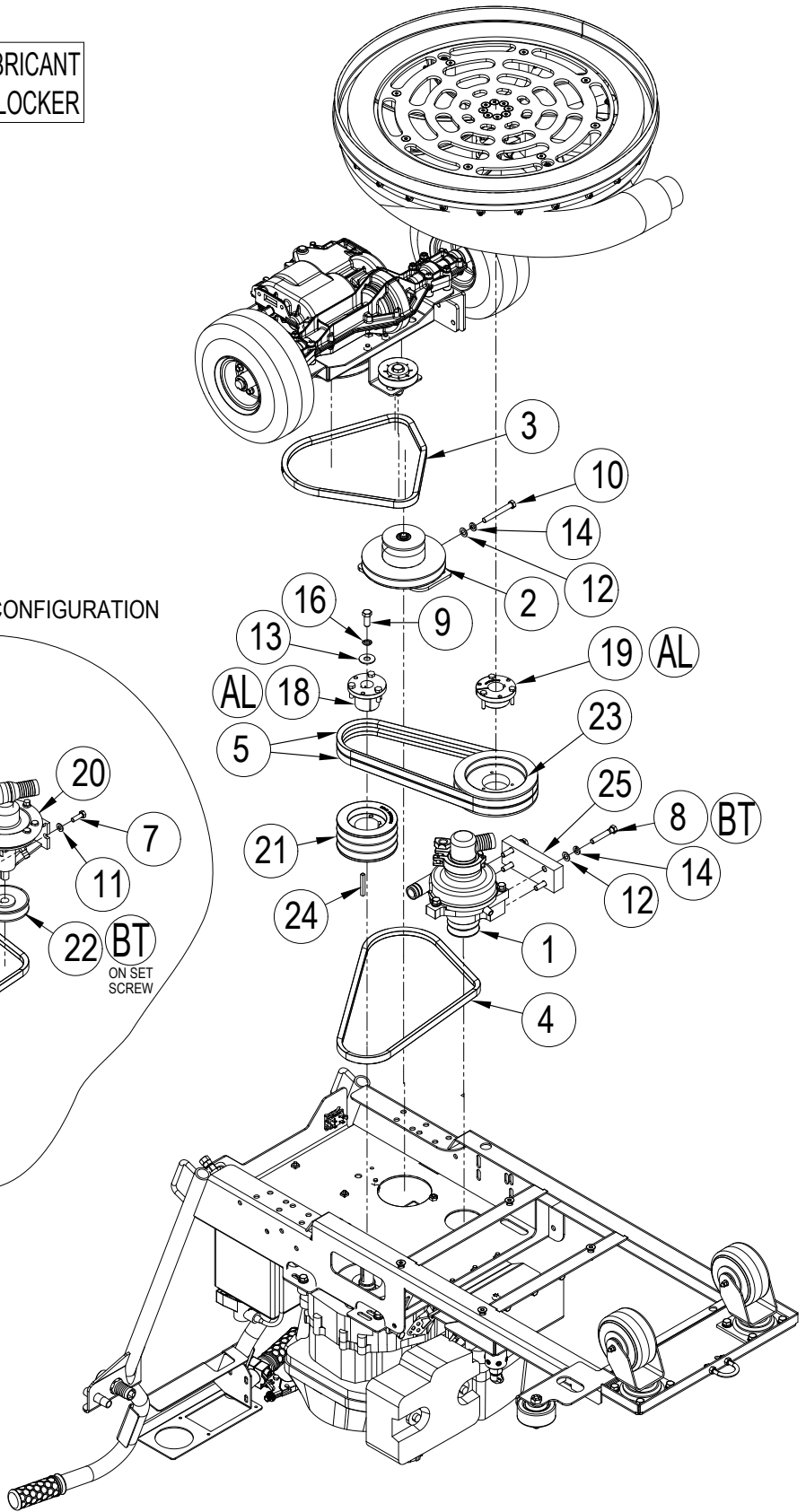
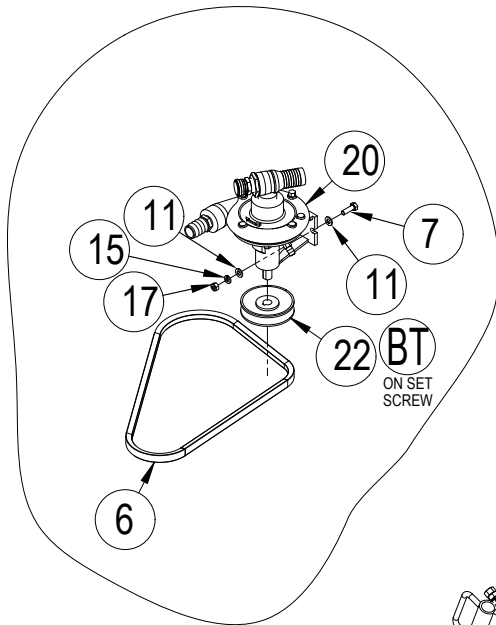
[] = Not Shown

* = Optional, Not Included

SELF-PROPEL DRIVE SYSTEM

- Ⓐ AL ANTI-SEIZE LUBRICANT
- Ⓑ BT BLUE THREAD LOCKER

STANDARD PUMP CONFIGURATION



SELF-PROPEL DRIVE SYSTEM

Item	Ref. No.	Qty.	Description
1	104-0600001-01	1	Macerator Return Pump Assy
2	128-CY21021-01	1	Step Pulley Tens. Assy, CY210, Transaxle
3	128-CY21091-01	1	Transaxle, Self-Propel Integrated Unit
4	203-0100005-01	1	Belt, V, Bx42
5	203-0100041-01	2	Belt, V, Bx38-Cy210 Spindle Drive
6 [†]	203-0100074-01	1	Belt, V, Bx43, 46.3" Outer Length
7 [†]	204-0101014-07	2	Bolt, 5/16"-18 X 1", Cap, G8, Zinc
8	204-0101033-07	4	Bolt, 3/8"-16 X 2-1/4", Cap, G8, Plated
9	204-0101107-01	1	Bolt, 7/16"-20 X 1", G8 Zinc
10	204-0101154-07	1	Bolt 3/8"-16 X 3" Long, Full Thread G8, Zinc
11 [†]	204-0603004-07	4	Washer, 5/16", Flat, Hardened, SAE, Zinc
12	204-0603006-07	5	Washer, 3/8", Flat, Hardened, SAE, Zinc
13	204-0603031-01	1	Washer, Flat, 7/16", .5" ID X 1.25" OD
14	204-0604003-07	5	Washer, Lock, 3/8", Zinc
15 [†]	204-0604006-07	2	Washer, Lock, 5/16", Zinc
16	204-0604040-07	1	Washer, Lock, 7/16", Zinc
17 [†]	204-0703003-07	2	Nut, Hex 5/16"-18 G8, Zinc
18	207-0201006-01	1	Bushing, 1", Split Taper
19	207-1101005-01	1	Bushing, SDS 1-1/4" Bore
20 [†]	226-0300004-01	1	Return Pump With Pedestal, CY210
21	236-0200027-01	1	Sheave 3-Groove Pulley 4.75" O.D.
22 [†]	236-0200046-01	1	Sheave, 1-Gr, 5/8" Bore
23	236-0300018-01	1	Sheave, 2 Groove, Prop Pump Driver
24	320-0100572-01	1	Key, CY210, Engine Shaft, Cut, Length
25	320-0110002-01	1	Macerator Spacer (CY210)

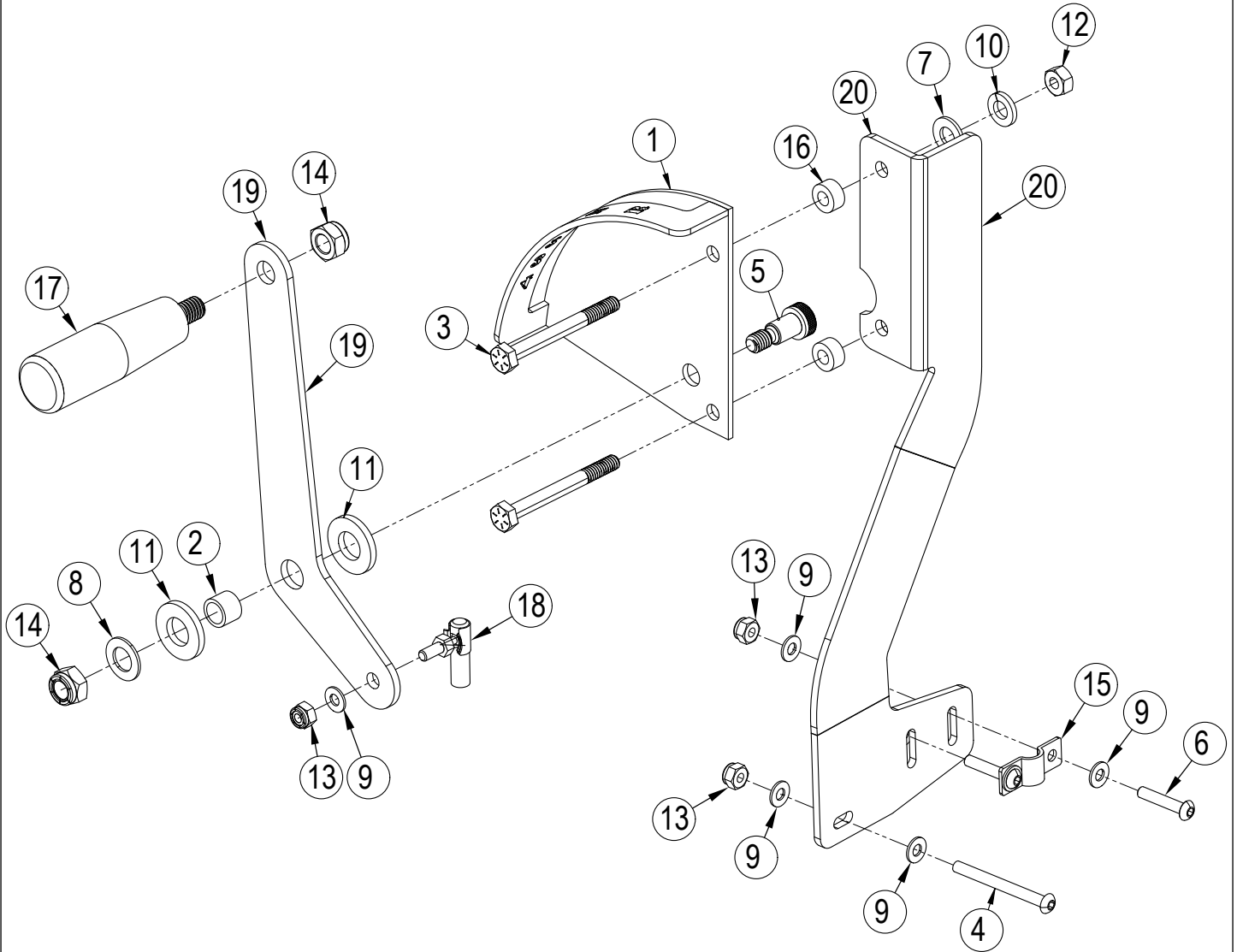
= Revised or new since last update

[] = Not Shown

* = Optional, Not Included

† = Standard Return Pump Option Only

SELF-PROPEL GEAR SELECT ASSEMBLY



SELF-PROPEL GEAR SELECT ASSEMBLY

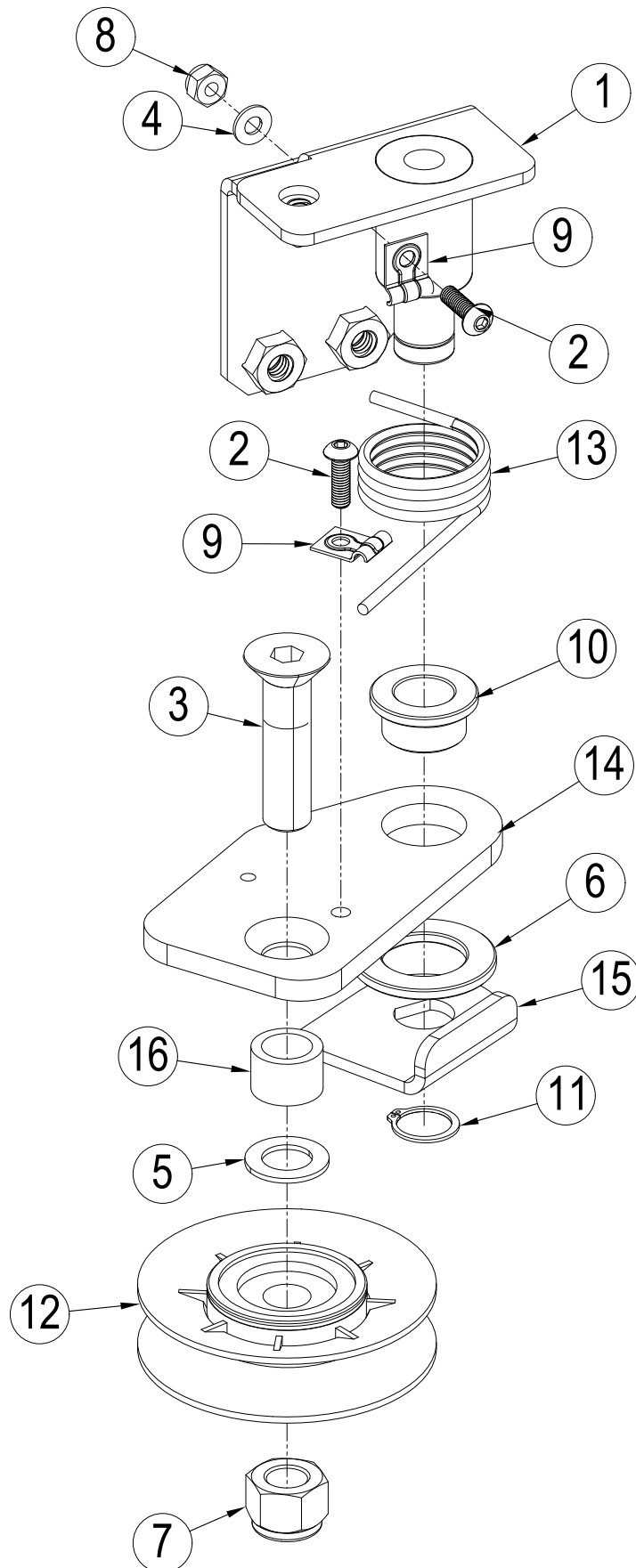
Item	Ref. No.	Qty.	Description
1	128-CY21022-01	1	Shift Handle Brkt Assy., CY210
2	202-0101015-01	1	Sleeve Bearing, 3/8"ID X 3/8"L
3	204-0101118-07	2	Bolt, 1/4"-20 X 2.5", Cap, Zinc
4	204-0101166-02	1	Bolt, 10-32 X 2", BH, SS
5	204-0102018-01	1	Shoulder Bolt 3/8" W X 1/2" L
6	204-0103016-02	2	Bolt, 10-32 X 1", BH, S
7	204-0603004-07	2	Washer, 5/16", Flat, Hardened, SAE, Zinc
8	204-0603006-07	1	Washer, 3/8", Flat, Hardened, SAE, Zinc
9	204-0603019-02	7	Washer, #10, Flat, SS
10	204-0604006-07	2	Washer, Lock, 5/16"
11	204-0609006-01	2	Thrust Washer, 1/2"ID X 1"OD 1/8" Th
12	204-0703002-07	2	Nut, Hex 1/4"-20, G8, Zinc
13	204-0704018-01	4	Nut, 10-32, Lock, Nylon, Zinc
14	204-0704031-07	2	Nut, 5/16"-18, Thin, Lock, Nylon, Zinc
15	204-1008020-01	1	Strap Clamp, Shift Cable, 10-32
16	204-1202050-01	2	Spacer, 1/2"OD X 1/4"L, Aluminum
17	240-0500003-01	1	Handle, Plastic, 3/8"-16 Stud
18	281-1201005-01	1	Ball Joint, 10-32 Push Pull Cable
19	304-3000006-01	1	Shifter Handle, CY210
20	304-4000008-01	1	Bracket, Extension, Gear Select, Cable Clamp

= Revised or new since last update

[] = Not Shown

* = Optional, Not Included

SELF-PROPEL CLUTCH PULLEY ASSEMBLY



SELF-PROPEL CLUTCH PULLEY ASSEMBLY

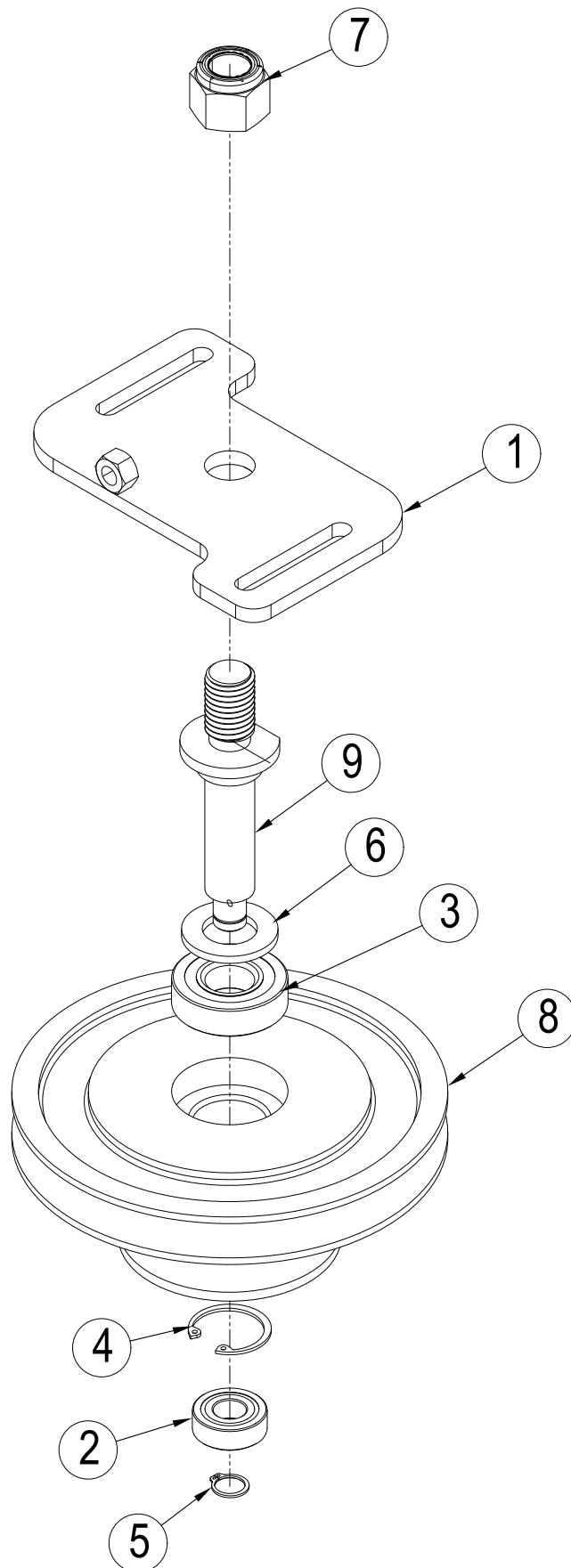
Item	Ref. No.	Qty.	Description
1	128-CY21032-01	1	Bracket, Idler, Drive, Top Half, Weldt
2	204-0103017-02	2	Bolt #10-32 X 5/8", BH, SS
3	204-0105021-02	1	Bolt, 1/2"-13 X 2.00", FH, SS, NP
4	204-0603019-02	2	Washer, #10, Flat, SS
5	204-0603037-02	1	Washer, 1/2", Flat, A+N, S/S
6	204-0609007-01	1	Thrust Washer, 1.5"OD X 0.875"ID X 0.125"W, Oilite
7	204-0704006-07	1	Nut, 1/2"-13, Lock, Nylon, Zinc
8	204-0704018-01	2	Nut, #10-32, Lock, Nylon, Zinc
9	204-1005100-01	2	Clamp, Routing, 1/8" Rod
10	204-1300010-01	1	Flanged Sleeve Bearing, 5/8" Shaft, Oilite
11	204-1600022-01	1	Snap Ring, External, 5/8" Shaft X 0.39"
12	236-0200045-01	1	Pulley, Idler, B-Belt, 0.5" Bore
13	246-0100016-01	1	Spring, Torsional, 1" Shaft, 90, RHW
14	304-3000017-01	1	Clutch Pulley Idler Arm, CY210
15	304-3000021-01	1	Clutch Idler Key Lock
16	304-3000022-01	1	Spacer, 0.75" X 0.515625" X 0.5", 6061-T6

= Revised or new since last update

[] = Not Shown

* = Optional, Not Included

SELF-PROPEL STEP TENSIONER ASSEMBLY



SELF-PROPEL STEP TENSIONER ASSEMBLY

Item	Ref. No.	Qty.	Description
1	128-CY21020-01	1	Tensioner Assy, CY210, Transaxle
2	202-0108020-01	1	Bearing, Radial Ball, 1.125" X 0.5" X 0.375"
3	202-0108021-01	1	Bearing, Radial Ball, 1.75" X 0.75" X 0.5"
4	204-0502009-02	1	Snap Ring, Internal, For 1.125" Shaft
5	204-0502010-02	1	Snap Ring, External, For 0.5" Shaft
6	204-0603015-07	1	Washer, 3/4", Flat Hardened, SAE, Zinc
7	204-0704011-07	1	Nut, 3/4"-10, Lock, Nylon, Zinc
8	236-0200042-01	1	Step Pulley, 2 Groove
9	264-0700020-01	1	Shaft, CY210 Tensioner, Transaxle

= Revised or new since last update

[] = Not Shown

* = Optional, Not Included