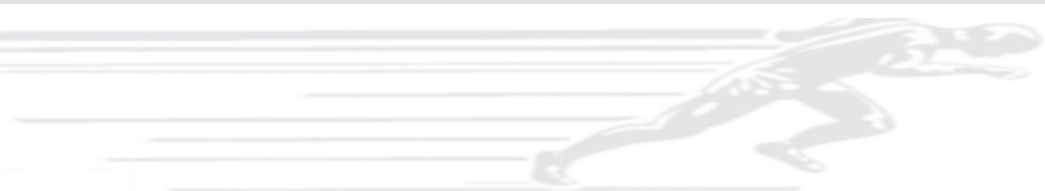


MICRO SCRUBBER

Minuteman[®]
Excellence Meets Clean



**EZ Mop
360°**



APPLICATIONS

Multiple solutions based on brush type or floor pad color.

Ultra maneuverable handling allowing a 360° effortless rotation. This very efficient design and 16' scrub path cleans 5,400 square feet per hour. The 36 volt battery produces 1 hour of continuous run time.

A true hybrid product between the mop and the scrubber, its extreme maneuverability eliminates unsightly dirty build up in hard to clean places.

Compact but robust and reliable, guarantees many years of service. Its chassis is made of high-density stainless steal (AISI 304L or A2: stainless steel food type) for a real professional use, designed for Cleaning Professionals.



FEATURES

Powerful / efficient multi-speed scrubbing action

Powerful suction and water-lift for clean dry floors

Easy storage - Height 46.85" x Width 16.14" x Depth 18.3"

Extremely maneuverable 360° robust swiveling handle

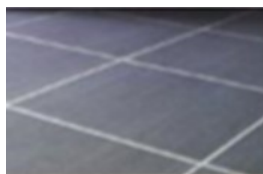
Easy to maintain and operate

Easy and intuitive operating controls

Effective / efficient cleaning at 5,400 square feet per hour

Effortless transporting due to the strategically placed front castors and fixed carrying handle

All floor types can be cleaned effectively with 4 brush options or pad driver and pad color selection.



Slate / Porcelain



Marble



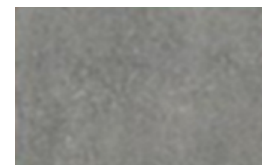
Quarry Tile



Wood / Laminate



Studded Rubber Tile



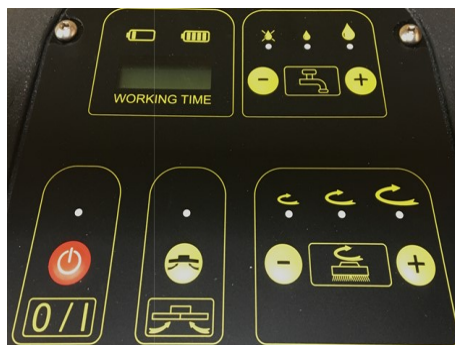
Terrazzo

Minuteman[®]
Excellence Meets Clean

ADVANTAGES



Ease of Setup



Simplicity of Controls



Water Pickup



Maneuverability



No Slip



Cleaner Environment

Minuteman[®]
Excellence Meets Clean

TECHNICAL SPECIFICATIONS

- ♦ Lithium Ion Battery: 36 Volts
- ♦ Run Time: 1 hour
- ♦ Scrub width: 16.0"
- ♦ Squeegee width: 17.7 inches
- ♦ Pad / Brush pressure: 48.5 lbs.
- ♦ Brush Speed: 210 rpm
- ♦ Productivity: 5,400 square feet / hour
- ♦ Solution tank: .8 gallons
- ♦ Recovery tank: 1.3 gallons
- ♦ Vacuum motor: 36 volt / .40 h.p.
- ♦ Noise level: 66 dba



ACCESSORIES

- ♦ Battery 36 Volts
- ♦ Charger 13 Ah and its adapter
- ♦ Sensor
- ♦ Two 8" nylon brushes standard. 3 optional grit brushes / pad holders available
- ♦ Linatex squeegee blades standard



Minuteman[®]
Excellence Meets Clean

Bortek Industries Inc.

4713 Gettysburg Rd.

Mechanicsburg, PA 17055

Phone: 800-626-7835

Come Visit Our Website at:

www.sweeperland.com

Minuteman is a full line manufacturer of sweepers and scrubbers; as well as critical filter vacuums, industrial and commercial vacuums, floor and carpet machines, and litter vacuums for commercial and institutional facilities, whereas PowerBoss is a full line manufacturer of sweepers and scrubbers for industrial facilities.