



SGP

OPERATOR'S MANUAL

■ SGP-3020

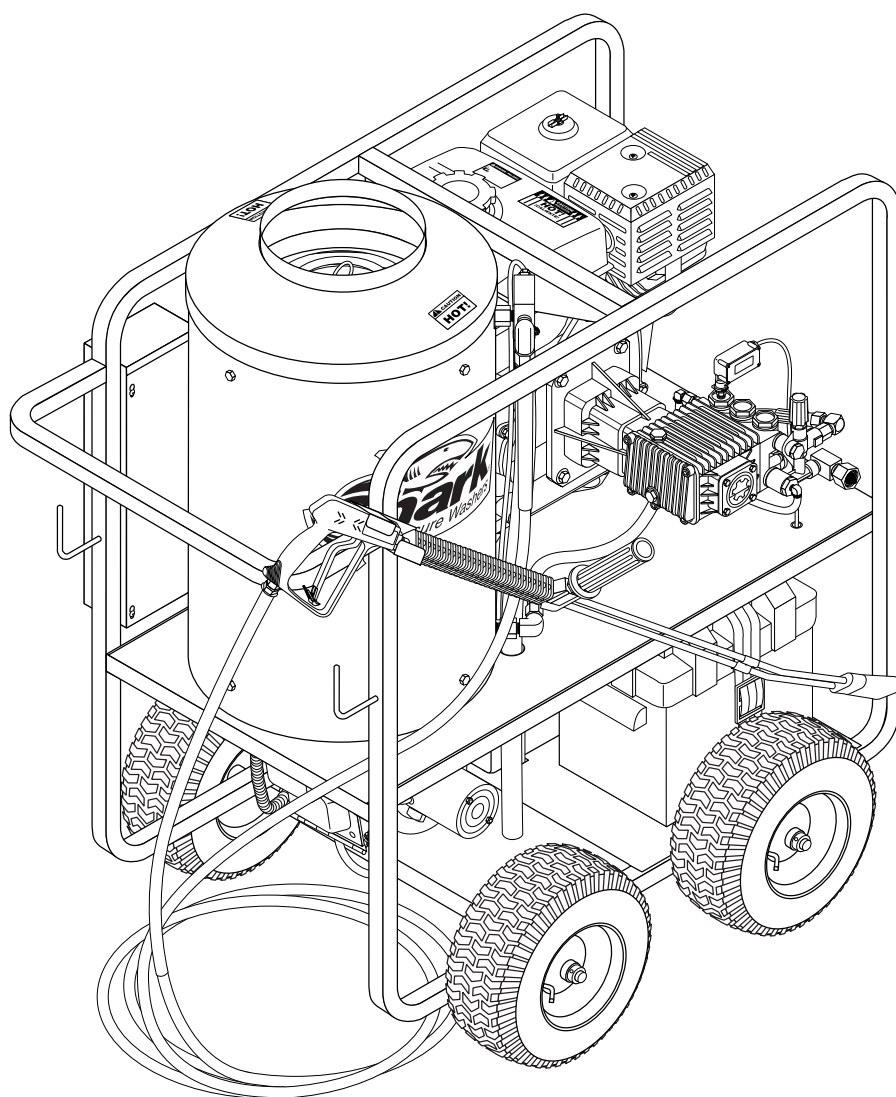
■ SGP-3025

■ SGP-3030

■ SGP-3530

■ SGP-3530E

■ SGP-4035E



SHARK PRESSURE WASHERS ■ 4275 N.W. PACIFIC RIM BLVD. ■ CAMAS, WA 98607 ■ USA

For technical assistance or the Shark Dealer nearest you, call 1-800-771-1881.

CONTENTS

Introduction	3
Important Safety Instructions	3,5
Component Identification	4
Pre-Operation Checklist	5
Set-Up Procedures	6
Operating Instructions	6
General Washing Techniques	6
Shut-Down Procedures	6
How to Use the Detergent Injector	7
Preventative Maintenance	8
Maintenance and Service	8-10
Exploded View (3020, 3025)	11
Exploded View (3030, 3530, 3530E, 4035E)	12-13
Exploded View Parts List (All Models)	14-16
Control Panel & Parts List (3020, 3025)	17
Control Panel & Parts List (3030, 3530, 3530E, 4035E)	18-19
Hose & Spray Gun Assembly (All Models)	20
Downstream Injector Assembly #4-011184 (All Models)	21
Preventative Maintenance Schedule	22
Oil Change Record	22
Burner Specifications	23
Troubleshooting	24-26
Warranty	

SERIAL NUMBER:
DATE PURCHASED:
FOR SALES AND SERVICE, PLEASE CONTACT:

INTRODUCTION

Thank you for purchasing a Shark Pressure Washer.

This manual covers the operation and maintenance of the SGP washers. All information in this manual is based on the latest product information available at the time of printing.

Shark, Inc. reserves the right to make changes at any time without incurring any obligation.

The SGP Series was designed for maximum use of 4 hours per day, 5 days per week.

Owner/User Responsibility:

The owner and/or user must have an understanding of the manufacturer's operating instructions and warnings before using this Shark pressure washer. Warning information should be emphasized and understood. If the operator is not fluent in English, the manufacturer's instructions and warnings shall be read to and discussed with the operator in the operator's native language by the purchaser/owner, making sure that the operator comprehends its contents.

Owner and/or user must study and maintain for future reference the manufacturers' instructions.

This manual should be considered a permanent part of the machine and should remain with it if machine is resold.

When ordering parts, please specify model and serial number.

IMPORTANT SAFETY INSTRUCTIONS

WARNING: When using this machine basic precautions should always be followed, including the following:



CAUTION: To reduce the risk of injury, read operating instructions carefully before using.

1. Read the owner's manual thoroughly. Failure to follow instructions could cause malfunction and result in death, serious bodily injury and/or property damage.
2. Know how to stop the machine and bleed pressures quickly. Be thoroughly familiar with the controls.
3. **Stay alert** - watch what you are doing.

4. All installations must comply with local codes. Contact your electrician, plumber, utility company or the selling distributor for specific details.



WARNING: Flammable liquids can create fumes which can ignite causing property damage or severe injury.

5. Risk of explosion - do not spray flammable liquids or operate in an explosive location. Operate only where open flame or torch is permitted.



WARNING: Do not place machine near flammable objects when the engine is hot.

WARNING: Keep water spray away from electrical wiring or fatal electric shock may result. Read warning tag on electrical cord.

WARNING: Spray gun kicks back. Hold with both hands.

6. Grip cleaning wand securely with both hands before starting the cleaner. Failure to do this could result in injury from a whipping wand.



WARNING: Risk of fire. Do not add fuel when the machine is operating.

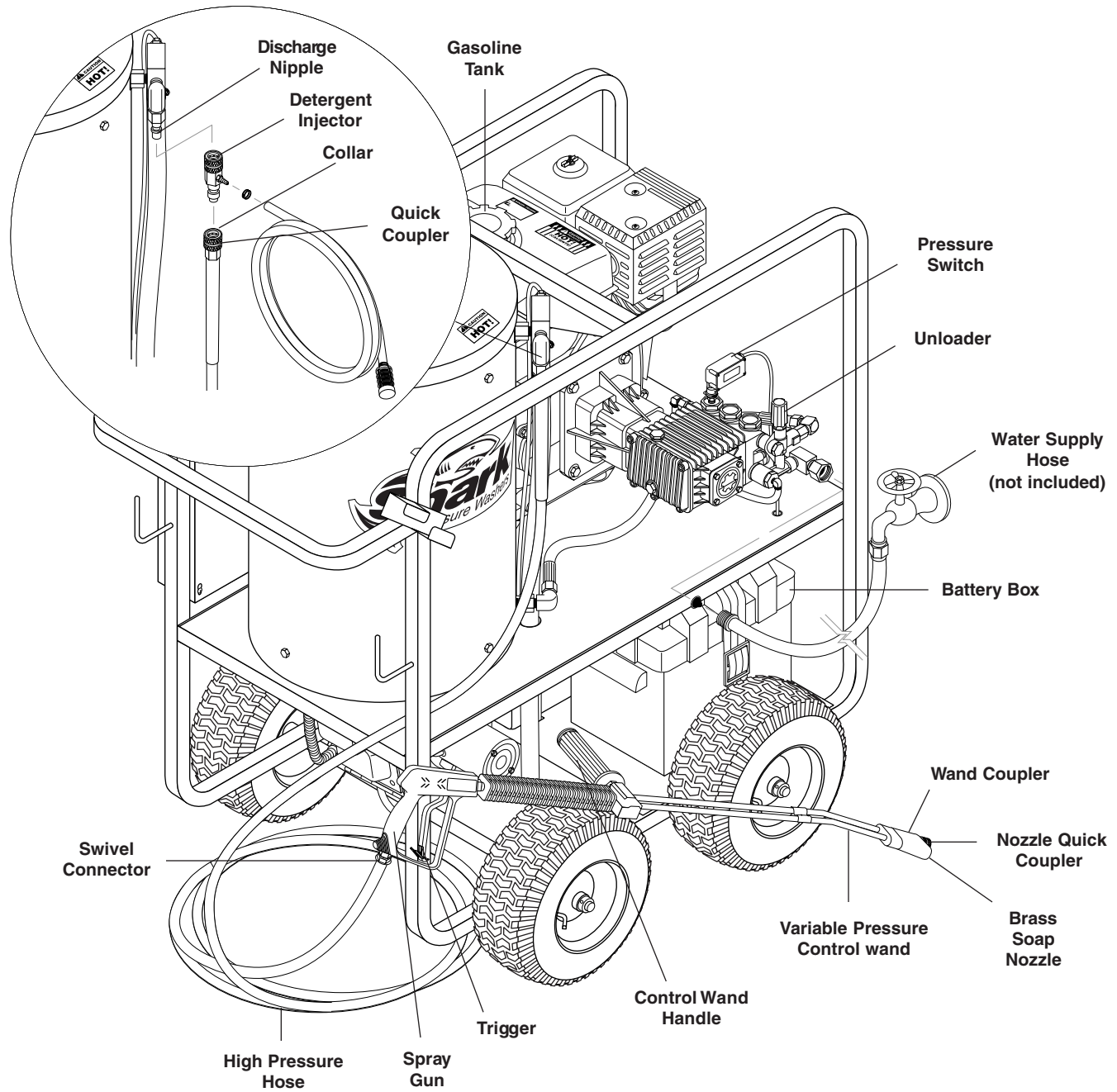
7. Allow engine to cool for 2 minutes before refueling. If any fuel is spilled, make sure area is dry before testing spark plug or starting the engine. (Fire and/or explosion may occur if this is not done.)

Gasoline engines on mobile or portable equipment shall be refueled:

- a. Outdoors;
- b. With the engine on the equipment stopped;
- c. With no source of ignition within 10 feet of the dispensing point;
- d. With an allowance made for expansion of the fuel should the equipment be exposed to a higher ambient temperature.

In an overfilling situation, additional precautions are necessary to ensure that the situation is handled in a safe manner.

COMPONENT IDENTIFICATION





WARNING: Risk of injection or severe injury to persons - Keep clear of nozzle - Do not touch or direct discharge stream at persons. This machine is to be used only by trained operators.

CAUTION: Hot discharge fluid. Do not touch or direct discharge stream at persons.

- High pressure developed by these machines can cause personal injury or equipment damage. Use caution when operating. Do not direct discharge stream at people, or severe injury and/ or death may result.



WARNING: High pressure can cause paint chips or other particles to become airborne and fly at high speeds.

- Eye safety devices and foot protection must be worn when using this equipment.
- Never make adjustments on machine while in operation.



WARNING: Use only in well ventilated areas. Failure to observe this warning could cause a loss of consciousness or death.

- Avoid installing in small areas or near exhaust fans. Exhaust contains poisonous carbon monoxide gas; exposure may cause loss of consciousness and may lead to death. It also contains chemicals known, in certain quantities, to cause cancer, birth defects or other reproductive harm.
- Do not operate with the spray gun in the off position for extensive periods of time as this may cause damage to the pump.
- The best insurance against an accident is precaution and knowledge of the machine.
- Shark will not be liable for any changes made to our standard machines, or any components not purchased from Shark.
- Read engine safety instructions provided.
- Never run pump dry or leave spray gun closed longer than 5 minutes.
- Inlet water must be from a cold, clean fresh city water supply.



WARNING: Only use recommended fuel. Using other fuels may result in a serious explosion causing personal injury, property damage or loss of life.

- Use No. 1 or No. 2 heating oil (ASTM D306) only. **NEVER** use gasoline in your fuel oil tank. Gasoline is more combustible

than fuel oil and could result in a serious explosion. **NEVER** use crankcase or waste oil in your burner assembly. Fuel unit malfunction could result from contamination.

- Do not confuse gasoline and fuel oil tanks. Keep proper fuel in proper tank.
- Protect machine from freezing.
- Be certain all quick coupler fittings are secured before using pressure washer.
- Do not allow acids, caustic or abrasive fluids to pass through the pump.
- To reduce the risk of injury, close supervision is necessary when a product is used near children. Do not allow children to operate the pressure washer. **This machine must be attended during operation.**
- Do not operate this product when fatigued or under the influence of alcohol or drugs. Keep operating area clear of all persons.
- Protect high pressure hose from vehicle traffic and sharp objects.
- Before disconnecting high pressure hose from water outlet, turn burner off and pull the trigger on the spray gun allowing water to cool to below 100° F before stopping machine. Then open the spray gun to relieve pressure. Failure to properly cool down or maintain the heating coil may result in a steam explosion.
- Do not overreach or stand on unstable support. Keep good footing and balance at all times.
- This machine must be attended during operation.
- CAUTION: Risk of injury. Disconnect battery ground terminal before servicing.**

PRE-OPERATION CHECK

- Pump oil (SAE 30W non-detergent oil)
- Cold water supply (6 gpm • 5/8" • 20 psi)
- Hose, wand, nozzle (nozzle size per serial plate)
- Water filter (intact, nonrestrictive)
- Engine fuel (unleaded 86 or higher)
- Engine oil (SAE 10W40)
- Burner fuel (No. 1 home heating fuel or diesel)

SET-UP PROCEDURES

Machine must be stored indoors when not in use.

1. Attach a 5/8" water supply hose to inlet connector. Minimum flow should be 5 gpm.
2. Attach high pressure hose to discharge nipple using quick coupler. Lock coupler securely into place by pulling back coupler collar and inserting it onto discharge nipple and then pushing collar forward to lock in place.
3. Attach variable pressure control wand to spray gun using teflon tape on threads to prevent leakage.
4. Attach swivel connector on high pressure hose to spray gun using teflon tape on threads.
5. Check oil level on sight glass on side of pump. Oil should be visible one-half way up sight glass (SAE 30W non-detergent). The oil level can also be checked by using the dipstick on the top of the pump.
6. Fill gasoline tank and check engine oil.
7. Fill fuel tank. Do not confuse gasoline and fuel oil (diesel) tanks. Keep proper fuel in proper tanks.
8. Install proper battery making sure that the red cable is attached to the positive terminal. Use only a group 24 marine type deep cell battery with a 90 amp hour rating (battery not included). This is for electric start models only.
9. These machines are intended to be protected from outside environments.

OPERATING INSTRUCTIONS

(See Component Identification on page 4.)

1. **STOP!** Read operator's manual before operating this machine. Failure to read operation and warning instructions may result in personal injury or property damage.
2. Turn on water at faucet and pull trigger on spray gun allowing water to flow until all air has discharged from system. Check for water leaks; tighten as needed.
3. Pull wand coupler collar back and insert desired pressure nozzle into coupler then secure by pushing collar forward.

NOTE: Variable pressure control wand handle must be turned clockwise to enable water to flow out of the high pressure nozzle.

4. Read engine manual, turn on gas valve and choke. Turn the engine switch to the START position and hold it there until the engine starts. **NOTE:** Do not use the electric starter for more than five seconds at a time. If the engine fails to start, release the switch and wait ten seconds before operating the starter again. When the engine starts, allow the engine

switch to return to the ON position. If the engine is to be started without the battery, turn switch to start position and pull rope to start. Turn off choke.

CAUTION: Small engines may kick back. Do not hold pull rope tightly in hand.

5. With spray nozzle pointed away from you or anyone else, press trigger on spray gun to obtain pressurized cold water spray.
6. For hot water, turn the burner switch ON when a steady stream of water flows out of the spray gun. Burner will light automatically.

NOTE: Do not start machine with burner switch on.
7. To apply detergent, see "How to Use the Detergent Injector" (page 7).

GENERAL WASHING TECHNIQUES

1. Hold spray nozzle approximately one foot from the surface being cleaned. Spray at an angle to get under the material being removed.
2. When washing large objects, use detergent injector to apply detergent. Start washing from the bottom and work up. Better detergent economy and faster results will be obtained by allowing the detergent to set 5 - 10 minutes. After washing, rinse from the top down.
3. Cleaning heavy dirt or material away with a hard stream of clear water is recommended before using a cleaning agent.

SHUT DOWN PROCEDURES

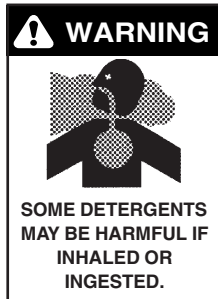
1. Rinse all lines (and injector) with clean water to remove any soap residue.
2. Turn burner switch off and continue spraying, allowing the water to cool below 100° F.
3. Turn engine off.
4. Turn off water supply.
5. Open spray gun to relieve remaining pressure.
6. Remove water supply hose.
7. In freezing conditions, disconnect water supply and open spray gun to allow water to drain. Then turn off the engine. See winterizing procedure under Maintenance and Service.

CAUTION: Do not allow pump to run longer than 5 minutes without water. Disconnect all hoses to allow water to drain.

CAUTION: With the machine off, open spray gun to release pressure before removing discharge hose.

CAUTION: Burner switch must be turned off when the engine is off or damage to the battery and the 12V DC burner will result.

HOW TO USE THE DETERGENT INJECTOR



WARNING: *Some detergents may be harmful if inhaled or ingested causing severe nausea, fainting or poisoning. The harmful elements may cause property damage or severe injury.*

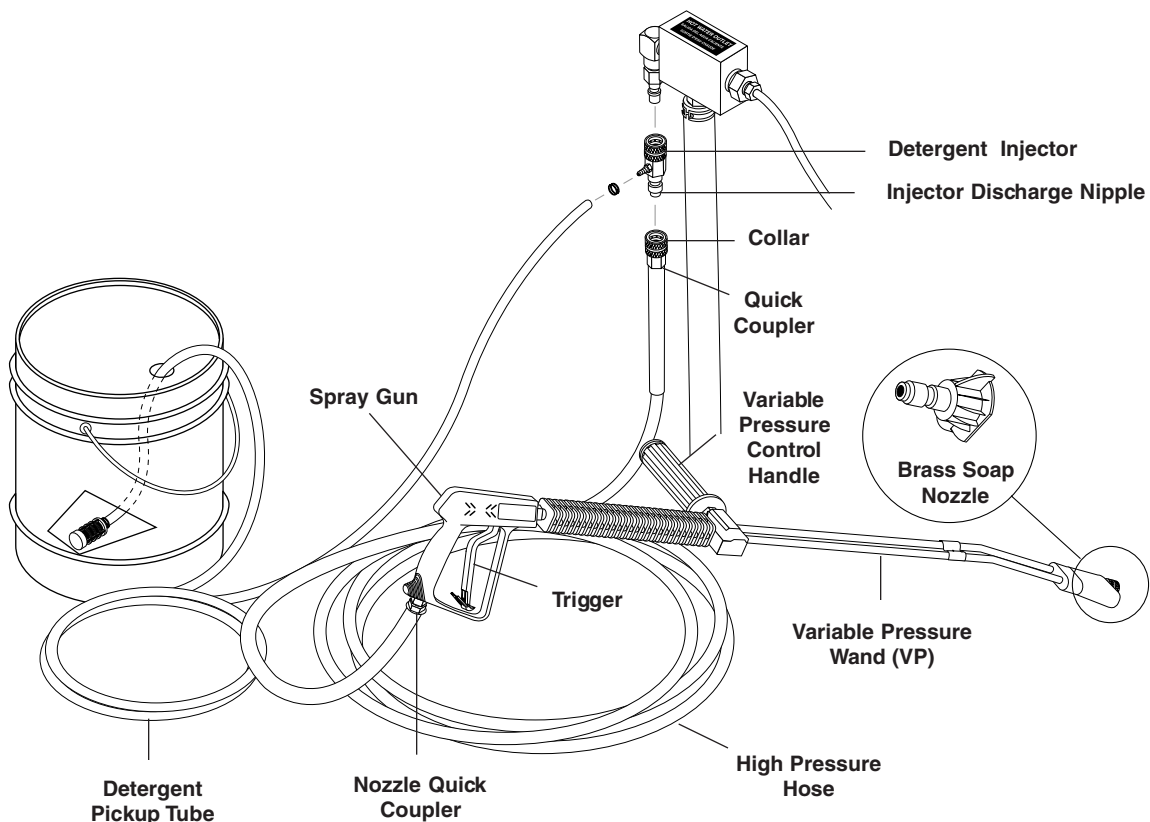
The machine can siphon and mix detergents with the use of Shark's detergent injector kit.

1. Pull injector quick coupler collar back and secure on discharge nipple. Injector valve body arrow should point in direction of flow.
2. Connect high pressure hose to injector nipple securing quick coupler.
3. Start machine as outlined in Operating Instructions.

4. Place detergent pick-up tube into container of detergent solution.
5. Turn pressure control handle counterclockwise on the variable pressure wand. This lowers the pressure by directing the water flow through the soap nozzle and allows the detergent injector to siphon soap.
6. Open trigger spray gun. Water detergent ratio is approximately 15 to 1.
7. When you finish washing, rinse by simply turning the variable pressure wand control handle clockwise to increase pressure.

NOTE: The detergent injector will not siphon with water flowing through the high pressure nozzle at the end of the wand.

8. For clean up, place detergent pick-up tube into container of clear water and follow steps 5 and 8 to prevent detergent deposits from damaging the injector.



PREVENTATIVE MAINTENANCE

1. Check to see that the water pump is properly lubricated.
2. Follow winterizing instructions to prevent freeze damage to the pump and coils.
3. Always neutralize and flush detergent from system after use.
4. If water is known to be high in mineral content, use a water softener in your water system or de-scale as needed.
5. Do not allow acidic, caustic or abrasive fluids to be pumped through system.
6. Always use high grade quality Shark cleaning products.
7. Never run pump dry for extended periods of time.
8. Use clean fuel-kerosene, No. 1 fuel oil or diesel. Replace fuel filter every 100 hours of operation. Avoid water contaminated fuel as it will seize up the fuel pump.
9. If machine is operated with smoking or eye burning exhaust, coils will soot up, not letting water reach maximum operating temperature. (See section on Air Adjustments.)
10. Never allow water to be sprayed on or near engine or burner assembly or any electrical component.
11. Periodically delime coils as per instructions.
12. Check to see that engine is properly lubricated.

It is advisable, periodically, to visually inspect the burner. Check air inlet to make sure it is not clogged or blocked. Wipe off any oil spills and keep this equipment clean and dry.

The areas around the Shark washer should be kept clean and free of combustible materials, gasoline and other flammable vapors and liquids.

The flow of combustion and ventilating air to the burner must not be blocked or obstructed in any manner.

MAINTENANCE AND SERVICE

Unloader Valves:

Unloader valves are preset and tested at the factory before shipping. Occasional adjustment of the unloader may be necessary to maintain correct pressure. Call your local dealer for assistance.

Winterizing Procedure:

Damage due to freezing is not covered by warranty. Adhere to the following cold weather procedures whenever the washer must be stored or operated outdoors under freezing conditions.

During winter months, when temperatures drop below 32°F, protecting your machine against freezing is necessary. Store the machine in a heated room. If this is not possible then mix a 50/50 solution of anti-freeze/water into a 5 gallon bucket. Place a short section of garden hose into the bucket and connect it to the machine. Elevate the bucket and turn the pump on to siphon the anti-freeze through the machine. If compressed air is available, an air fitting can be screwed into the inlet connector and, by injecting compressed air, all water will be blown out of the system.

High Limit Hot Water Thermostat:

For safety, each machine is equipped with a high limit control switch. In the event that the temperature of the water should exceed its operating temperature, the high limit control will turn the burner off until the water cools.

Pumps:

Use only SAE 30W non-detergent oil. Change oil after the first 50 hours of use. Thereafter, change the oil every three months or at 500 hour intervals. Oil level should be checked by using the dipstick found on top of the pump or the red dot visible through the oil gauge window. Oil should be maintained at that level.

Cleaning of Coils:

In alkaline water areas, lime deposits can accumulate rapidly inside the coil pipes. This growth is increased by the extreme heat build up in the coil. The best prevention for liming conditions is to use high quality cleaning detergents. In areas where alkaline water is an extreme problem, periodic use of Shark Deliming Powder (part #9-028008) will remove lime and other deposits before coil becomes plugged. (See Deliming Instructions for use of Shark Deliming Powder.)

Deliming Coils:

Periodic flushing of coils is recommended.

1. Fill a container or optional float tank with 4 gallons of water, then add 1 lb. of deliming powder. Mix thoroughly.
2. Remove wand assembly from spray gun and put spray gun into container. Secure the trigger on the spray gun into the open position.
3. Attach a short section (3-5 ft.) of garden hose to machine to siphon solution from an elevated container. Turn pump switch on, allowing solution to be pumped through coils back into the container. Solution should be allowed to circulate 2-4 hours.
4. After circulating solution flush entire system with fresh water. Reinstall wand assembly to spray gun.

Rupture Disk:

If pressure from pump or thermal expansion should exceed safe limits, the rupture disk will burst allowing high pressure to be discharged through hose to ground. When disk ruptures it will need to be replaced.

Fuel:

Use clean fuel oil that is not contaminated with water and debris. Replace fuel filter and drain tank every 100 hours of operation.

Use No. 1 or No. 2 Heating Oil (ASTM D306) only. **NEVER** use gasoline in your burner tank. Gasoline is more combustible than fuel oil and a serious explosion could result. **NEVER** use crankcase or waste oil in your burner. Fuel unit malfunction could result from contamination.

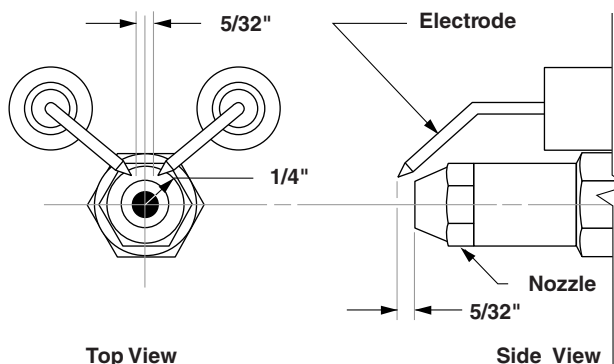
Fuel Control System:

These machines utilize a fuel solenoid valve located on the fuel pump to control the flow of fuel to the combustion chamber. This solenoid valve, which is normally closed, is activated by a flow switch when water is flowing through it. When an operator releases the trigger on the spray gun, the flow of water through the flow switch stops, turning off the current to the fuel solenoid. The solenoid then closes, shutting off the supply of fuel to the combustion chamber. Controlling the flow of fuel in this way allows for an instantaneous burn or no burn situation, thereby eliminating high and low water temperatures, and combustion smoke normally associated with machines incorporating a spray gun.

CAUTION: Periodic inspection is recommended to insure that the fuel solenoid valve functions properly. This can be done by operating the machine and checking to see that when the trigger on the spray gun is in the off position, the burner is not firing.

Electrode Setting:

(See illustration below.)



Periodically check wiring connections. If necessary to adjust electrodes, use diagram.

Burner Nozzle:

Keep the tip free of surface deposits by wiping it with a clean, solvent-saturated cloth, being careful not to plug or enlarge the nozzle. For maximum efficiency, replace the nozzle each season.

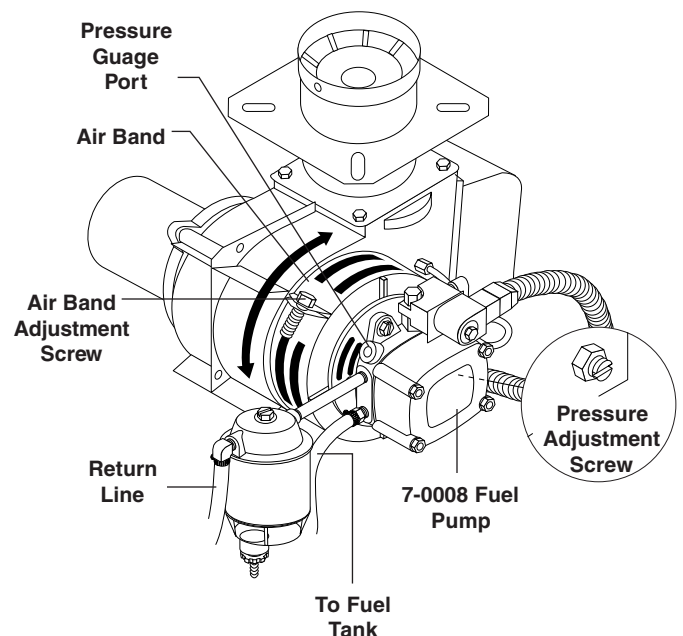
Air Adjustment:

Machines are preset and performance tested at the factory - elevation 100 feet. A one-time initial correction for your location will pay off in economy, performance and extended service life. If a smoking or eye-burning exhaust is being emitted from the stack, two things should be checked. First, check the fuel to be certain that kerosene or No. 1 home heating fuel is being used. Next, check the air adjustment on the burner.

To adjust: start machine and turn burner ON. Loosen two locking screws found in the air shutter openings (refer to illustration below) and close air shutter until black smoke appears from burner exhaust vent. Note air band position. Next, slowly open the air shutter until white smoke just starts to appear. Turn air shutter halfway back to the black smoke position previously noted. Tighten locking screws.

If the desired position cannot be obtained using only the air shutter, lock the air shutter in as close a position as can be obtained, then repeat the above procedure on the air band setting.

FUEL AIR ADJUSTMENT



Fuel Pressure Adjustment:

To adjust fuel pressure, turn the adjusting screw clockwise to increase, counterclockwise to decrease. Do not exceed 200 psi. **NOTE:** When changing the fuel pump, a bypass plug must be installed in the return port or the fuel pump will not prime.

Removal of Soot and Heating Coil:

In the heating process, fuel residue in the form of soot deposits may develop on the heating coil and block air flow which will affect burner combustion. When soot has been detected on visual observation, the soot on the coil must be washed off after following the coil removal steps.

1. Remove the tank head assembly by lifting the tank head off.
2. Remove the two pipe nipples and associated fittings.
3. Lift the coil out of the outer wrap.

CAUTION: The coil weighs about 80 lbs. Use proper lifting techniques.

4. Clean, repair and replace the coil by reversing the above steps.

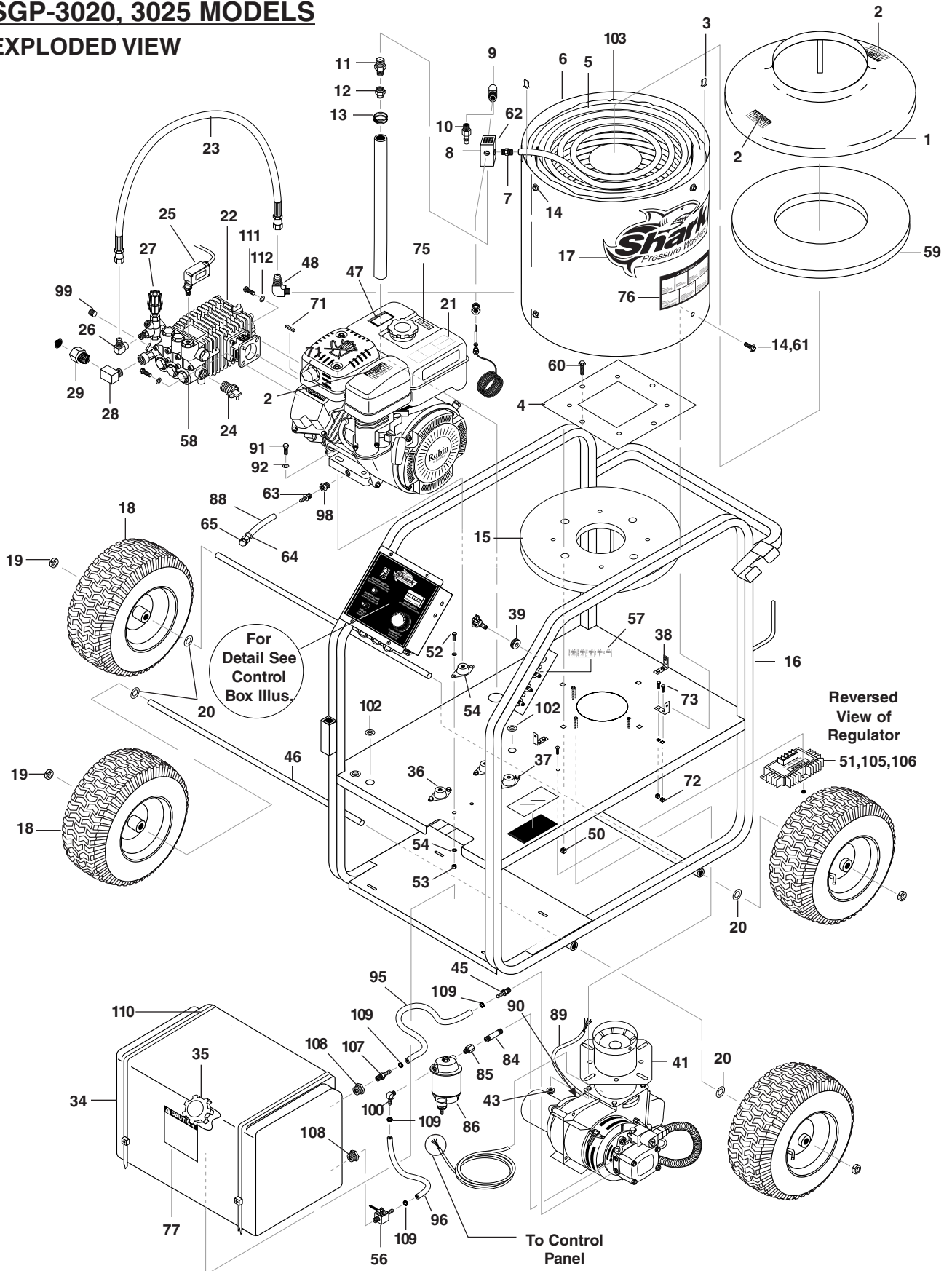
Coil Reinstallation:

Reinstall by reversing the above steps 4 through 1.

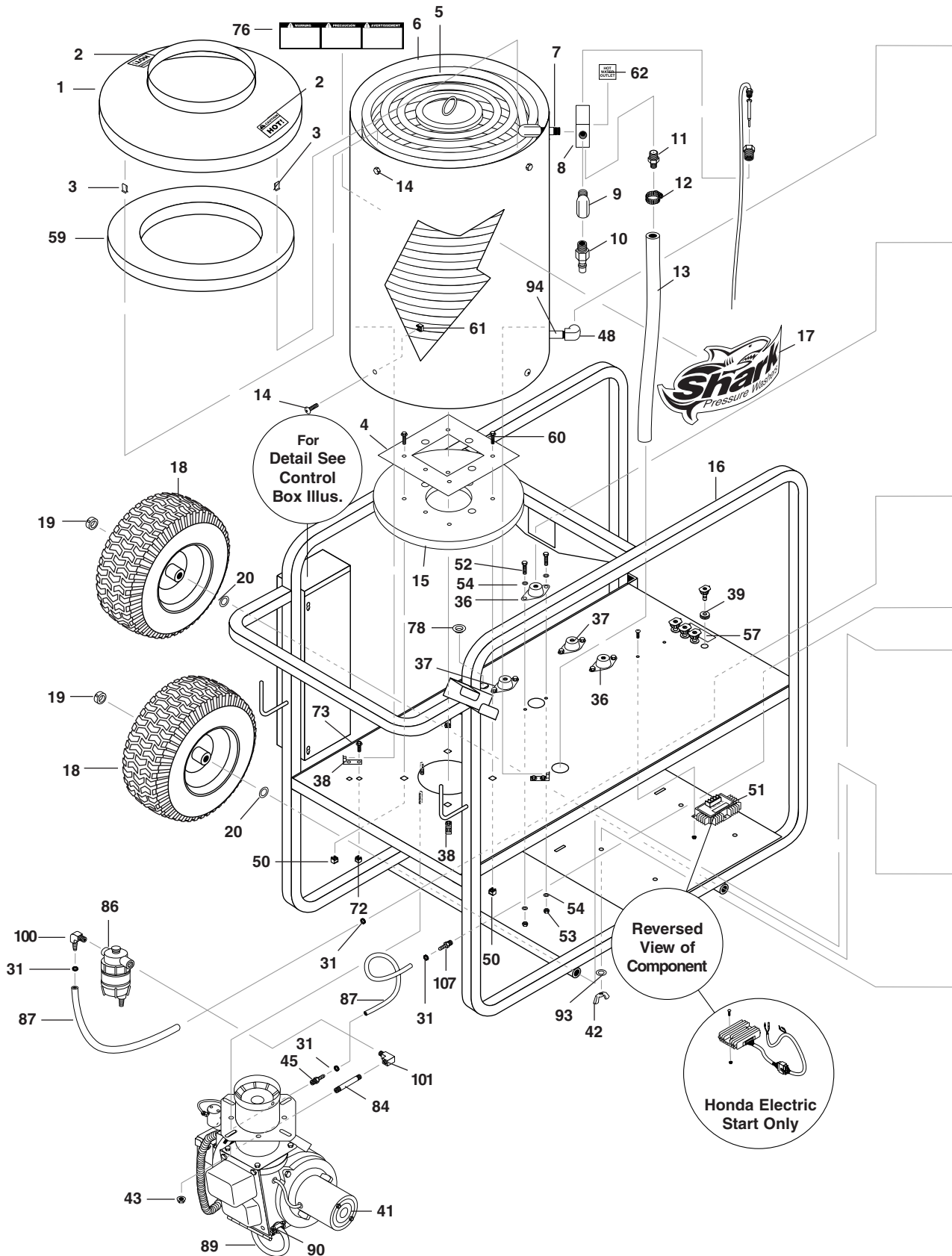
Final Note:

The 12 VDC burner systems can draw as much as 18 amps! For such motors to run properly, the battery and engine charging system must be kept in good condition, and the engine must run fast enough to adequately charge the battery. Do not throttle down the engine for any length of time.

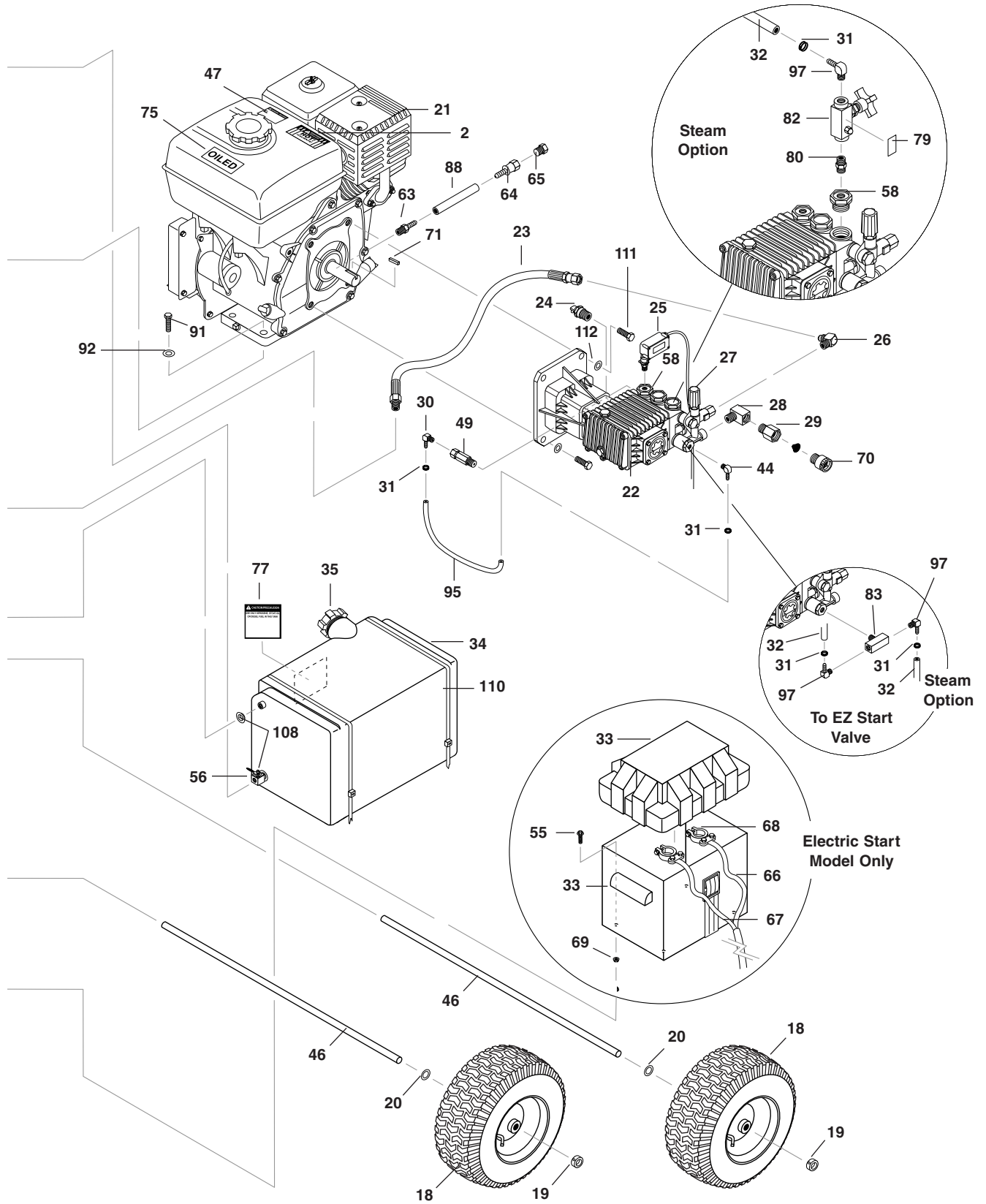
SGP-3020, 3025 MODELS EXPLODED VIEW



3030, 3530, 3530E, 4030E MODELS
EXPLODED VIEW LEFT SIDE



3030, 3530, 3530E, 4030E MODELS EXPLODED VIEW RIGHT SIDE



**ALL MODELS
EXPLODED VIEW PARTS LIST**

ITEM	PART NO.	DESCRIPTION	QTY
1	95-07290029	Tank Head Assembly, 16" Dia. x 8" Stack	1
2	10-02025A	Label, Hot/Caliente w/Arrows Warning	3
3	90-50045	Clip, Retaining, U-Type	4
4	95-07290053	Retainer, Burner Insulation	1
5	95-07121218	Coil, Dura, 14.5" Dia., Sch. 80 (3030, 3530, 3530E, 4035E)	1
	95-07102310	Coil Assy (3020, 3025)	1
6	95-07200129	Wrap, Outer Coil (3030, 3530, 3530E, 4035E)	1
	95-07102249	Wrap, Outer Coil (3020, 3025)	1
7	2-0008	Nipple, 1/2" x M x M, Hex	1
8	95-07101225	Block, Discharge, Brass 3/8" x 1/2"	1
9	2-0031	Elbow, 3/8" Street	1
10	2-2007	Nipple, 3/8" x 3/8" NPT ST Male	1
11	2-3408	Disk, Rupture Assy, 8000 PSI	1
12	2-90041	Clamp, Screw, #16	1
13	4-02130050	Hose, 7/8" Push-On, Conduit	2.5 ft.
14	90-19710	Screw, 1/4" x 3/4" HH NC	9
15	7-01482	Insulation, Tank Bottom, 1" Blanket	1
16	95-07102227	Assy, Frame (3030, 3530, 3530E, 4035E)	1
	95-07104955	Assy. Frame, SGP Mini (3020, 3025)	1
17	11-013	Label, Shark Logo Die-Cut	2
18	4-0307	Wheel & Tire, 6" Steel Rim	4
19	90-20041	Collar, 5/8" Bore Shaft	4
20	90-4005	Washer, 5/8", Flat, SAE	4
21	5-0003	Engine, Robin, 6 HP, 200W (3020)	1
	5-0004	Engine, Robin, 7 HP, 200W (3025)	1
	5-01021	Engine, Honda, GX270QAR2, 9 HP, 18 AMP (3030)	1
	5-01072	Engine, Honda, GX340QNR2, 11 HP E/S, 18 AMP (3530E)	1
	5-01070	Engine, Honda, GX340QAH2, 11 HP, 18 AMP (3530)	1
	5-010720	Engine, Honda, GX390KQNR2, 13 HP E/S, 18 Amp (4035E)	1

ITEM	PART NO.	DESCRIPTION	QTY
22	5-1630	Pump, Legacy, WMG-2625 (302017)	1
	5-2100	Pump, Comet, AXD3020G (302016)	1
	5-1631	Pump, Legacy, WMG-2530 (302517)	1
	5-23027	Pump, General, TP-2530334 (302511)	1
	5-2318	Pump, General, EZ-3035G (303031)	1
	5-2313	Pump, General, EZ-3040G/WW961 (353031, 353031E)	1
	5-23161	Pump, General, EZ-4035 (403531E)	1
	5-1635	Pump, Legacy WMG-3030 (303037)	1
	5-1643	Pump, Legacy TMG-4040 (403537E)	1
	5-1640	Pump, Legacy TMG-3535 (353037, 353037E)	1
23	4-02047725	Hose, 3/8" x 25", 2 Wire, Pressure Loop	1
24	2-30082	Pump Protector, 1/2" PTP	1
25	6-021720	Switch, Pressure N/O, 1/4" NPT SS	1
26	2-0053	Elbow, 1/2" JIC, 3/8", 90° (303031, 353031, 353031E, 403531E)	1
	2-00601	Elbow, 1/2" JIC x 3/8" FEM, 90° (303037, 353037, 353037E, 403537E, 302017, 302517)	1
27	5-3024	Unloader, PA 6.5 GPM @ 2600 PSI, VB135L TT (302511)	1
	5-3022	Unloader, PA 8 GPM @3650 PSI, VB75L (303031, 353031, 353031E, 403531E)	1
	5-3151	Unloader, APR.S 3000, 5.3 @3000 (302017, 302517, 303037, 353037, 353037E)	1
	5-3152	Unloader, APR 35, 8 @ 4000 (403537E)	1
28	2-1024	Elbow, 1/2" Street, Brass	1
29	2-10942	Swivel, 1/2" MP x 3/4" GHF w/Strainer	1

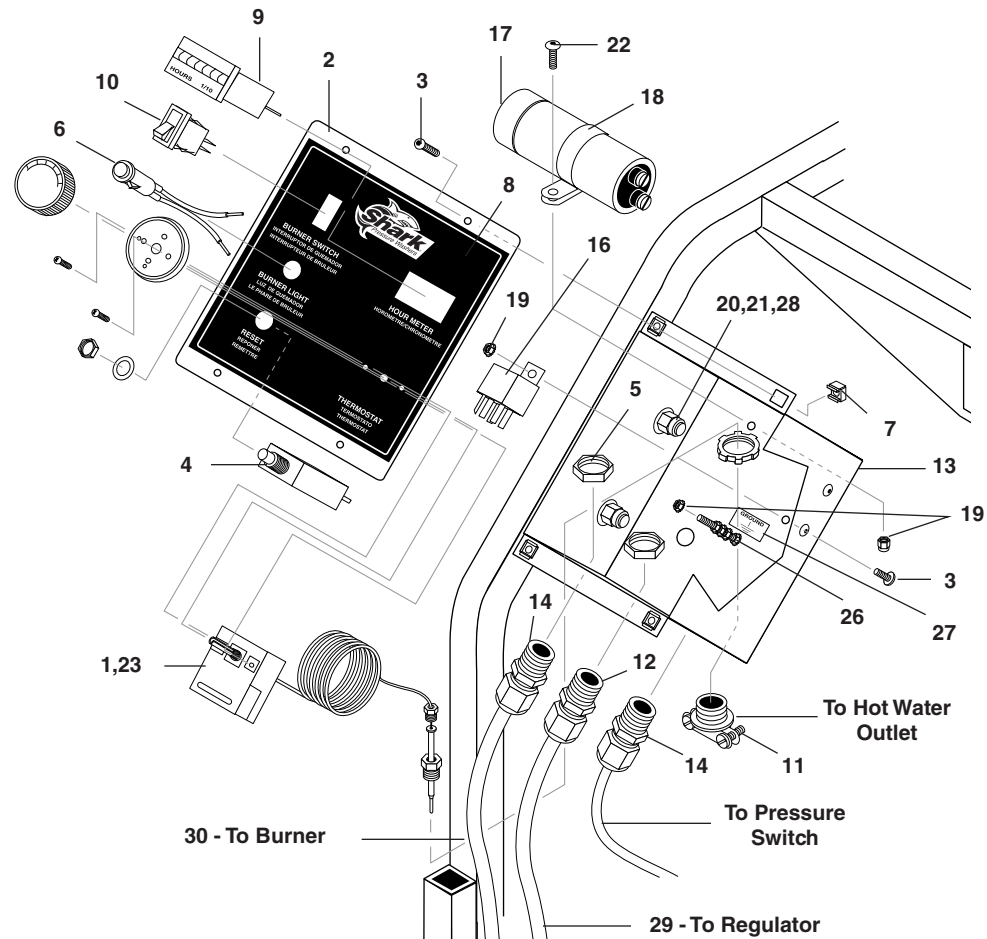
ALL MODELS EXPLODED VIEW PARTS LIST (CONTINUED)

ITEM	PART NO.	DESCRIPTION	QTY	ITEM	PART NO.	DESCRIPTION	QTY
30	2-1088	Hose Barb, 1/4" Barb x 1/8" ML Pipe, 90° (3030, 3530, 3530E, 4035E)	1	51	77-31620-ZG5-003	Regulator/Rectifier, 18 AMP (Electric Start)	1
31	2-9040	Clamp, Hose (3030, 3530, 3530E, 4035E)	6	52	90-1006	Bolt, 5/16" x 3/4" NC	8
32	4-02100000	Hose, 1/4", Push-On, Fuel Line, 15 Inches (Steam Option)	1	53	90-2001	Nut, 5/16" ESNA	8
33	2-0115	Box, Battery, M-100 (3530E, 4035E)	1	54	90-4001	Washer, 5/16" Flat	20
	2-011500	▲ Plate, Battery Box, Large, PolyPro (3530E, 4035E)	1	55	90-19715	Screw, 5/16" x 1-1/4" Whiz	4
34	2-0115090	Tank, Fuel, 6 Gal.	1	56	2-30057	Valve, 1/4" Shut OFF	1
35	2-01167	Cap, Fuel Tank, Plastic H60-AV 1		57	11-3218	Label, Nozzle Identification	1
36	2-01053	Mount, Rubber Vibration, 40 Duro (Blue Dot)	2	58	1-190031	Cap, Valve with 1/4" Gauge Port (303031, 353031, 353031E, 403531E)	1
37	2-01052	Mount, Rubber Vibration, 30 Duro	2		15-070042532	Cap, Valve with 1/4" Gauge Port, Legacy (302017, 302517, 303037, 353037, 353037E, 403537E)	1
38	95-07290007	Tab, Outer Wrap	4	59	7-014832	Insulation, Tank Head	1
39	2-0103	Grommet, Rubber, Nozzle Holder	4	60	90-19960	Screw, 3/8" x 1-1/4" Whiz Loc	4
41	Burner Assy, See Burner Spec's Page 23			61	90-2022	Nut, Cage, 1/4" x 16 GA	5
42	90-2025	Nut, 5/16" Wing (3530E, 4035E)	4	62	10-09004	Label, Hot Water Outlet	1
43	90-20040	Nut, 3/8" Flange Whiz Loc	4	63	2-11063	Plug, Push-On, Oil Drain, Honda 1	
44	2-1089	Hose Barb, 1/4" Barb x 1/4" Pipe, 90° (303037, 353037, 353037E, 403537E)	1	64	2-11062	Swivel, 1/4" JIC FEM, Push-On 1	
	2-1088	Hose Barb, 1/4" Barb x 1/8" ML Pipe, 90° (303031, 353031, 353031E, 403531E)	1	65	2-10491	Plug, 1/4" JIC	1
45	2-1085	Hose Barb, 1/4" Barb x 1/4" ML Pipe	1	66	6-0117	Wire, THWN, 6 GA, Red (3530E, 4035E)	2.75 ft.
46	95-07102229	Axle, 30" (3030, 3530, 3530E, 4035E)	2	67	6-0118	Wire, THWN, 6 GA, Black (3530E, 405E)	3.75 ft.
	95-07104723	Axle, 27.80" (3020, 3025)	2	68	6-05101	Connector, Battery Post, Universal (3530E, 4035E)	2
47	10-02029	Label, Danger Cool Engine	1	69	90-20012	Nut, Whiz Loc, 5/16" Flange (3530E, 4035E)	4
48	2-00602	Elbow, 1/2" JIC x 1/2" Fem, 90° (3030, 3530, 3530E, 4035E)	1	70	2-30062	Valve, Anti-Siphon, Watts 8B (3020, 3530, 3530E, 4035E)	1
	2-0053	Elbow, 1/2" JICM x 3/8", 90° (3020, 3025)	1	71	95-07141121	Key, 0.247 SQR x 2.125 (3020, 3530, 3530E, 4035E)	1
49	2-3100544	Valve, E-Z Start, 3/8" MPT x 1/8" FPT (3030, 3530, 3530E, 4035E)	1		95-07141120	Key, 0.185 SQR x 1.75" (3020, 3025)	1
50	90-2020	Nut, Cage, 3/8" x 12 GA	4	72	90-20231	Nut, Cage, 1/4" x 12 GA	8
51	6-0615	Regulator, Voltage, 15 V (Pull Start)	1	73	90-19711	Screw, 1/4" x 1/2" HH NC, Whiz Loc	8
				75	10-02012	Label, Oiled	1
				76	10-03015	Label, Warning, Text	1
				77	10-020110	Label, Use Only Kerosene	1

ALL MODELS
EXPLODED VIEW PARTS LIST (CONTINUED)

ITEM	PART NO.	DESCRIPTION	QTY	ITEM	PART NO.	DESCRIPTION	QTY
78	2-01404	Bushing, 7/8" Snap (3030, 3530, 3530E, 4035E)	1	97	2-1089	Elbow, 1/4" Hose Barb x 1/4" Pipe, Steam Option (3030, 3530, 3530E, 4030E)	3
79	10-99011	Label, Open For Steam (Steam Option)	1	98	2-10818	Reducer, M14 x 1/4" F (3020, 3025)	1
80	2-0004	Nipple, 1/4", Hex, Steel (Steam Option)	1	99	2-1046	Plug, 1/4" Countersunk (3020, 3025)	1
82	2-30151	Valve, Flow Control w/Metering (Steam Option)	1	100	2-1089	Hose Barb, 1/4" Barb x 1/4" Pipe, 90°	1
83	2-1037	Tee, 1/4" Branch Male, Legacy Pumps (Steam Option)	1	101	2-1022	Elbow, 1/4" Street (3030, 3530, 3530E, 4035E)	1
	2-1039	Tee, 1/8" Branch, General Pumps (Steam Option)	1	102	2-01403	Bushing, 3/4" Snap (3020, 3025)	3
84	2-001346	Nipple, 1/4" x 2" Galv.	1	103	7-01487	Insulation, Blanket, 18" x 52", Fiberglass (3020, 3025)	1
85	2-1103	Adapter, 1/4" x 1/4" (3020, 3025)	1	105	90-1999	Screw, 10/32" x 3/4" BH SOC CS (3020, 3025)	3
86	2-99050	Filter, Parker Fuel/Oil/H ₂ O (10 Micron), Generic	1	106	90-2018	Nut, Cage, 10/32" x 16 GA (3020, 3025)	3
87	4-02100000	Fuel Line, 1/4" (7 Inches Long; 3030, 3530, 3530E, 4035E)	2	107	2-10866	Hose Barb, 1/4" Barb x 3/8", Double	1
88	4-02100000	Fuel Line, 1/4" (11 Inches Long; 3030, 3530, 3530E, 4035E)	1	108	2-010061	Bushing, Rubber Nitrile	2
		(4 Inches Long; 3020, 3025)	1	109	2-9040	Clamp, Hose, UNI .46 - .54 (3020, 3025)	4
89	6-01041	Service Cord, 12/3 Jr. (3030, 3530, 3530E, 4035E)	3.33ft 4.50ft	110	6-05134	Cable, Tie, 48"	2
90	6-0516	Strain Relief, 1/2"	1	111	90-1006	Bolt, 5/16" x 3/4" NC (3020, 3025)	4
91	90-1009	Bolt, 5/16" x 1-1/2"	4		90-19960	Screw, 3/8" x 1-1/4" Whiz Loc (3030, 3530, 3530E, 4035E)	4
92	90-4008	Lock Washer, 5/16"	4	112	90-4008	Washer, 5/16" Lock Split Ring (3020, 3025)	4
93	90-4008	Lock Washer, 5/16" (3530E, 4035E)	4			▲ Not Shown	
94	2-000891	Nipple, Galv, 1/2" x 2-1/2" (3030, 3530, 3530E, 4035E)	1				
95	4-02100000	Hose, 1/4 (15 inches long)	1				
96	4-02100000	Hose, 1/4" Push-on, 7" (3020, 3025)	1				

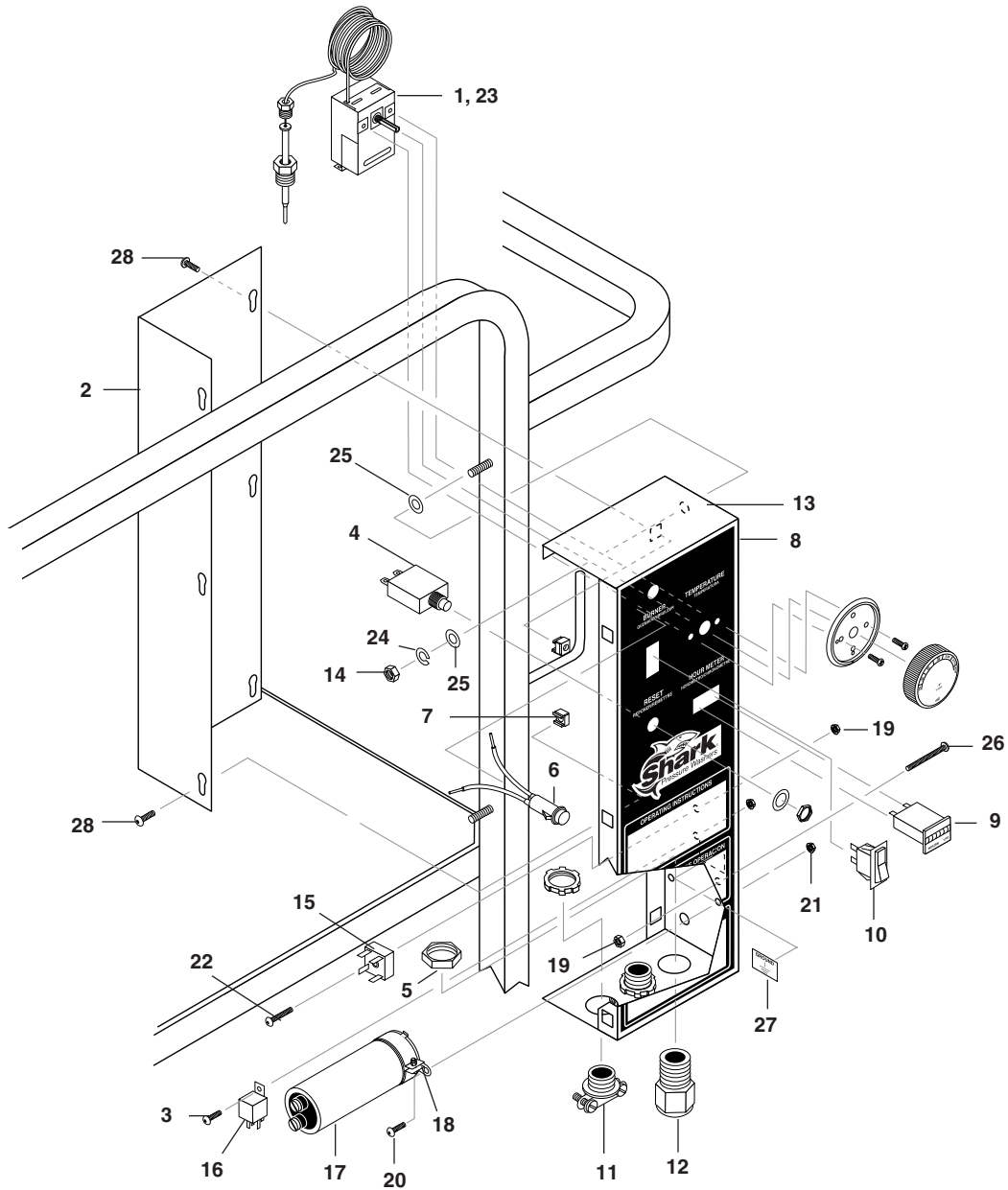
SGP-3020/3025 CONTROL PANEL EXPLODED VIEW



ITEM	PART NO.	DESCRIPTION	QTY
1	4-05088	Thermostat, Adjustable, 302°F	1
2	95-07104952	Cover, Elec. Box, SGP Mini	1
3	90-1991	Screw, 10/32" x 1/2" BHSOC, Black	5
4	6-041250	Breaker, 1658-G41-02-P10-25A1	1
5	6-05181A	Locknut, 1/2"	3
6	6-020590	Light, Indicator, Green 12V	1
7	90-2018	Cage, Nut, 10/32" x 16 GA	4
8	11-0474	Label, Control Panel, SGP-Mini	1
9	4-050823	Hour Meter, Hobbs, 12-48vDC	1
10	6-020251	Switch, Corvette RA901VB-B-1-V, Carling	1
11	6-0516	Strain Relief, 1/2" Metal, Two Screw	1
12	6-05153	Strain Relief, Medium	1
13	95-07104953	Box, Electric	1
14	6-05152	Strain Relief, Small	2

ITEM	PART NO.	DESCRIPTION	QTY
16	6-03671	Relay, P & B, VF4-41F11, 12VDC, 40AMP	1
17	6-06070	Capacitor	1
18	2-90159	Clamp, Hose	1
19	90-017	Nut, 10/32" Keps	7
20	90-4001	Washer, 5/16"	4
21	90-2001	Nut, ESNA, 5/16"	2
22	90-1999	Screw, 10/32" x 3/4" BH SOC CS	1
23	6-02170	▲ Conduit, Split, 1/4"	2 ft.
26	90-1994	Screw, 10/32" x 1-1/4" (Ground)	1
27	11-1042	Label, Ground	1
28	90-1006	Bolt, 5/16" x 3/4"	2
29	6-01053	Service Cord, 12/4 (Junior)	3.66ft
30	6-01041	Service Cord, 12/3 (Junior)	4.5ft
		▲ Not Shown	

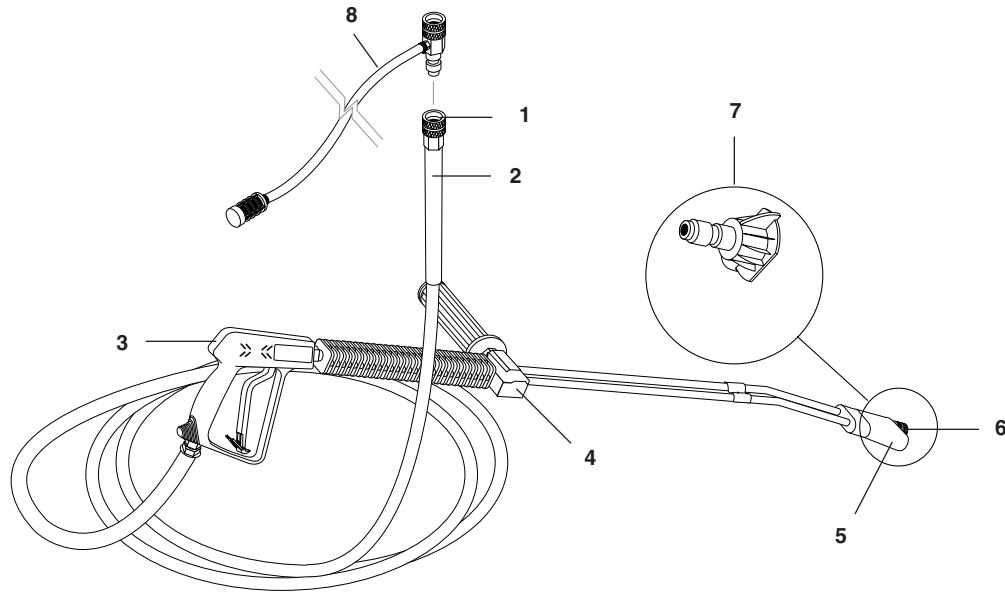
**SGP-3030/3530/3530E4035E CONTROL PANEL
EXPLODED VIEW**



SGP-3030/3530/3530E4035E CONTROL PANEL EXPLODED VIEW PARTS LIST

ITEM	PART NO.	DESCRIPTION	QTY	ITEM	PART NO.	DESCRIPTION	QTY
1	4-05088	Thermostat, Adjustable, 302°F	1	16	6-03671	Relay, P & B, VF4-41F11, 12VDC, 40AMP	1
2	95-07102228	Cover, Elec. Box	1	17	6-06070	Capacitor (3030, 3530)	1
3	90-1991	Screw, 10/32" x 1/2" BHSOC, Black	6	18	6-06071	Bracket, Capacitor (3030, 3530)	1
4	6-041250	Breaker, 1658-G41-02-P10-25A	1	19	90-017	Nut, 10/32" Keps	9
5	6-05181A	Locknut, 1/2"	1	20	90-14	Screw, 6/32" x 3/8", RND HD MCH (3030, 3530)	2
6	6-020590	Light, Indicator, Green 12V	1	21	90-200430	Nut, 6/32" Keps (3030, 3530)	2
7	90-2018	Cage, Nut, 10/32" x 16 GA	6	22	90-1999	Screw, 10/32" x 3/4" BH SOC CS1	1
8	11-0505	Label, Control Panel	1	23	6-02170	▲ Conduit, Split, 1/4"	5.5 ft.
9	4-050823	Hour Meter, Hobbs, 12-48vDC	1	24	90-4008	Washer, 5/16", Lock, Split Ring	2
10	6-020251	Switch, Curvette RA901VB-B-1-V, Carling	1	25	90-40011	Washer, 5/16", Flat, Cut	4
11	6-0516	Strain Relief, 1/2" Metal, Two Screw	2	26	90-1994	Screw, 10/32" x 1-1/4" (Ground)	1
12	6-05152	Strain Relief, Small	1	27	11-1042	Label, Ground	1
13	95-07102231	Box, Electric, 16 GA MS	1	28	90-19942	Screw, 10/32" x 3/4", HEX	6
14	90-2006	Nut, 5/16" Hex	2			▲ Not Shown	
15	6-0611	Rectifier, Bridge (3530E, 4035E)	1				

**HOSE AND SPRAY GUN ASSEMBLY
ALL MODELS**

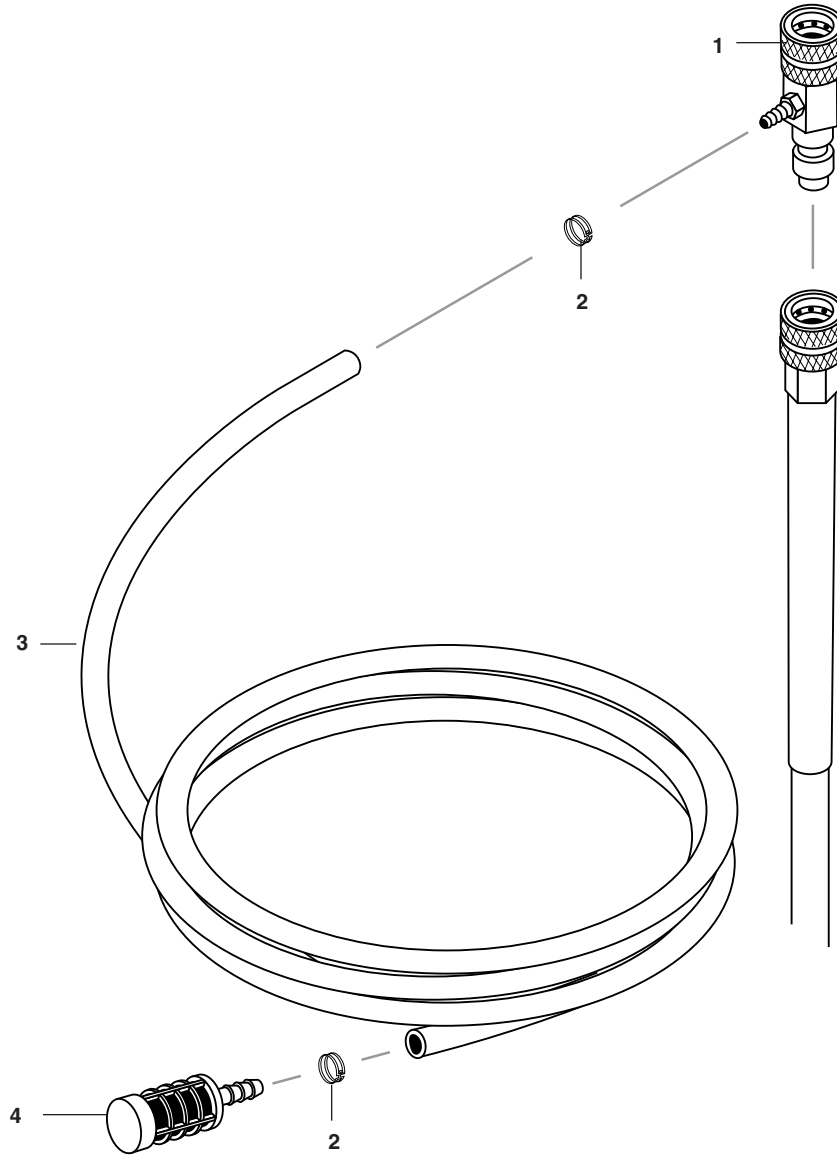


ITEM	PART NO.	DESCRIPTION	QTY
1	2-2002	Coupler, 3/8" Female	1
	2-0121	▲ Quick Coupler O-Ring LG	1
2	4-02093450BC	Hose, 3/8" x 50', 1 Wire, Blue w/Coupler (All Except 4035)	1
	4-02073450RC	Hose Only, 3/8" x 50', 2 Wire, Red w/Coupler (4035)	1
3	4-01246	Spray Gun, Shutoff, AP 1000	1
4	4-0111341A	Wand, VP Zinc 1/4" w/Coupler, w/Soap Nozzle	1
	83-SSVPKIT	▲ AL Wand Repair Kit, Stainless Seat	1
5	4-06540	Brass Soap Nozzle Only, 1/8"	1
6	2-2001	Coupler, 1/4" Male	1
	2-0119	▲ Quick Coupler O-Ring Sm	1
7	4-12803500	Nozzle, SAQMEG 0003.5, Red (3020, 3025, 4035)	1
	4-12803515	Nozzle, SAQMEG 1503.5, Yellow (3020, 3025, 4035)	1
	4-12803525	Nozzle, SAQMEG 2503.5, Green (3020, 3025, 4035)	1
	4-12803540	Nozzle, SAQMEG 4003.5, White (3020, 3025, 4035)	1

ITEM	PART NO.	DESCRIPTION	QTY	
7	4-12804015	Nozzle, SAQMEG 1504, Yellow (3530)	1	
	4-12804025	Nozzle, SAQMEG 2504, Green (3530)	1	
	4-12804040	Nozzle, SAQMEG 4004, White (3530)	1	
	4-12804000	Nozzle, SAQMEG 0004, Red (3530)	1	
	4-12803015	Nozzle, SAQMEG 1503, Yellow (3030)	1	
	4-12803025	Nozzle SAQMEG 2503, Green (3030)	1	
	4-12803040	Nozzle SAQMEG 4003, White (3030)	1	
	4-12803000	Nozzle SAQMEG 0003, Red (3030)	1	
	8	4-011184	Detergent Injector Assy #3 (3030, 3530, 3530E, 4035E)	1
		4-011183	Detergent Injector Assy #2 (3020, 3025)	1

▲ Not Shown

DOWNSTREAM INJECTOR ASSEMBLY #4-011184
ALL MODELS



ITEM	PART NO.	DESCRIPTION	QTY
1	3-12021	Injector, Det., Non-Adjust #3	1
	3-1202	Injector, Det., Non-Adjust #2	1
2	2-9040	Clamp, Hose	2
3	4-02080000	Tube, 1/4" x 1/2", Clear Vinyl /ft.6	
4	2-1904	Strainer, 1/4", Hose Barb	1

PREVENTATIVE MAINTENANCE

This pressure washer was produced with the best available materials and quality craftsmanship. However, you as the owner have certain responsibilities for the correct care of the equipment. Attention to regular preventative maintenance procedures will assist in preserving the performance of your equipment. Contact your Shark, Inc. dealer for maintenance. Regular preventative maintenance will add many hours to the life of your pressure washer. Perform maintenance more often under severe conditions.

MAINTENANCE SCHEDULE		
Engine Oil	Inspect	Daily
	Change	Every 25 hours
	Filter	Every 50 hours
Air Cleaner	Inspect	Every 50 hours or monthly
	Clean	Every 3 months
Battery Level		Check monthly
Engine Fuel Filter		500 hours or 6 months
Spark Plug Maintenance		500 hours or 6 months
Clean Fuel Tank(s)		Annually
Replace Fuel Lines		Annually
Pump Oil	Inspect	Oil level daily
	Change	After first 50 hours, then every 500 hours or annually
Clean Burner Filter		Monthly (More often if fuel quality is poor)
Remove Burner Soot		Annually
Burner Adjustment/Cleaning		Annually
Replace Burner Nozzle		Annually
Descale Coil		Annually (More often if required)
Replace High Pressure Nozzle		Every 6 months
Replace Quick Couplers		Annually
Clean Water Screen/Filter		Weekly
Replace HP Hose		Annually (If there are any signs of wear)

OIL CHANGE RECORD

Date Oil Changed Month/Day/Year	Estimated Operating Hours Since Last Oil Change

Date Oil Changed Month/Day/Year	Estimated Operating Hours Since Last Oil Change

BECKETT BURNER SPECIFICATIONS

Model #	Burner Assy #	Fuel Nozzle	Transformer	Burner Motor	Fuel Pump/ Solenoid/Cord	Fuel Solenoid Coil	Electrode
SGP-3020	7-00007	7-01260	7-515242	7-21699	7-00098	7-21754U	7-578727
SGP-3025	7-00007	7-01260	7-515242	7-21699	7-00098	7-21754U	7-578727
SGP-303031	7-00031	7-01215	7-515242	7-21699	7-00098	7-21754U	7-578727
SGP-303037	7-00031	7-01215	7-515242	7-21699	7-00098	7-21754U	7-578727
SGP-353031	7-00031	7-0101	7-515242	7-21699	7-00098	7-21754U	7-578727
SGP-353037	7-00031	7-0101	7-515242	7-21699	7-00098	7-21754U	7-578727
SGP-353031E	7-00031	7-0101	7-515242	7-21699	7-00098	7-21754U	7-578727
SGP-353037E	7-00031	7-0101	7-515242	7-21699	7-00098	7-21754U	7-578727
SGP-403531E	7-00031	7-0102	7-515242	7-21699	7-00098	7-21754U	7-578727
SGP-403537E	7-00031	7-0102	7-515242	7-21699	7-00098	7-21754U	7-578727

TROUBLESHOOTING

PROBLEM	POSSIBLE CAUSE	SOLUTION
LOW OPERATING PRESSURE	Water supply is insufficient	Use larger supply hose; clean filter at water inlet.
	Spray nozzle is old, worn or incorrect	Match the nozzle number to the machine and/or replace with new nozzle.
	Belt slips	Tighten or replace belt; use correct belt.
	Plumbing or hose is leaking	Check plumbing system for leaks. Retape leaks with teflon tape.
	Unloader is faulty or misadjusted	Adjust unloader for proper pressure. Install repair kit when necessary or replace.
	Packing in pump is worn	Install new packing kit.
	Discharge valve in pump or inlet is fouled or dirty	Check inlet and discharge valve.
	Discharge valve or inlet is worn	Replace with valve kit.
	Spray nozzle has obstruction	Remove obstruction.
	Steam pressure control valve is leaking (where applicable)	Rebuild or replace as necessary.
	Engine RPM is slow	Set engine speed at proper specifications / see serial plate.
BURNER WILL NOT LIGHT	There is little or no fuel	Fill tank with fuel.
	Improper fuel or water in fuel	Drain fuel tank and fill with proper fuel.
	Fuel line is clogged	Clean or replace fuel line.
	Fuel filter is plugged	Replace fuel filter as needed.
	Burner air bands are misadjusted	Readjust air bands for clean burn.
	Little or no fuel pressure from fuel pump	Increase fuel pressure to specification and/or replace fuel pump.
	Burner transformer is faulty	Test transformer for proper arc between contacts. Replace as needed.
	Electrical wiring is disconnected or has short in it	All wire contacts should be clean and tight with no breaks in wire.
	Flex coupling is slipping on fuel pump shaft or burner motor shaft	Replace if needed.
	ON-OFF switch is defective	Check for electrical current reaching burner assembly with burner switch on. Replace switch if needed.
	Heavy sooting on coil and burner can cause interruption of air flow and shorting of electrodes	Clean as required.
	Electrode setting is improper	Check and reset according to diagram in manual.
	25 amp circuit breaker tripped	Push in reset button.
	Bridge rectifier defective	Test and replace.
	12V DC relay defective	Test and replace.
Fuel is not reaching combustion chamber	Check fuel pump for proper flow. Check solenoid flow switch on machines with spray gun control for proper on-off flow control.	

TROUBLESHOOTING

PROBLEM	POSSIBLE CAUSE	SOLUTION
BURNER WILL NOT LIGHT (continued from previous page)	Burner nozzle is clogged	Clean as required.
	Thermostat has malfunctioned	Test and replace if needed.
	Fuel solenoid has malfunctioned	Test and replace if needed.
MACHINE SMOKES	Fuel is improper or water is in fuel	Drain tank and replace contaminated fuel.
	Air adjustment is improper	Readjust air bands on burner assembly.
	Fuel pressure is low	Adjust fuel pump pressure to specifications.
	Burner nozzle is plugged or dirty	Replace nozzle. Check parts breakdown for nozzle size.
	Burner nozzle spray pattern is faulty	Replace nozzle. Check parts breakdown for nozzle size.
	Coil and burner assembly have heavy accumulation of soot	Remove coils and burner assembly, clean thoroughly. Call local dealer.
	Electrode setting is misaligned	Realign electrodes to specifications.
	Smoke stack has obstruction	Check for blockage or other foreign objects.
	Engine RPM is low	Increase RPM to correct specs. See serial plate.
LOW WATER TEMPERATURE	Fuel is improper or has water in it	Replace with clean and proper fuel.
	Fuel pressure is low	Increase fuel pressure.
	Fuel pump is weak	Check fuel pump pressure. Replace pump if needed.
	Fuel filter is partially clogged	Replace as needed.
	Soot buildup on coils is not allowing heat transfer	Clean coils.
	Burner nozzle is improper	Call your local dealer for proper nozzle.
WATER TEMPERATURE TOO HOT	Incoming water to machine is warm or hot	Lower incoming water temperature.
	Fuel pump pressure is too high	Call your local dealer for proper fuel pressure.
	Fuel pump is defective	Replace fuel pump.
	Fuel nozzle is incorrect size	See parts breakdown or serial plate for proper size.
	Water supplied is insufficient	Check water GPM to machine.
	Water flow is restricted	Check nozzle for obstruction and proper size. Check serial plate for correct size.
PRESENCE OF WATER IN OIL	Oil seal is worn	Check and replace if necessary.
	Air humidity is high	Check and change oil twice as often.
	Packing is worn or bad	Check and replace if necessary.

(For parts or information contact your local Shark dealer)

TROUBLESHOOTING

PROBLEM	POSSIBLE CAUSE	SOLUTION
DETERGENT NOT DRAWING	Air is leaking	Tighten all clamps. Check detergent lines for holes.
	Injector head may be blocked, dirty or damaged	Clean and make sure ball and spring behind detergent hose barb or injector body are working properly.
	Filter screen on detergent suction hose is plugged	Clean or replace.
	Detergent has high viscosity	Dilute detergent to specifications.
	Not using soap nozzle	Insert soap nozzle into wand coupler.
	Detergent level is low	Add detergent if needed.
PUMP RUNNING NORMALLY BUT PRESSURE LOW ON INSTALLATION	Pump is sucking air	Check water supply and possibility of air seepage.
	Valves are sticking	Check and clean or replace if necessary.
	Unloader valve seat is faulty	Check and replace if necessary.
	Nozzle sized incorrectly	Check and replace if necessary (see serial plate for proper size).
	Packing piston is worn	Check and replace if necessary.
FLUCTUATING PRESSURE	Valves are worn	Check and replace if necessary.
	Valve has a blockage	Check and replace if necessary.
	Pump is sucking air	Check water supply and air seepage at joint in suction line.
	Packing piston is worn	Check and replace if necessary.
PUMP NOISY	Air is in suction line	Check water supply and connections on suction line.
	Inlet or discharge valve springs are weak or broken	Check and replace if necessary.
	Excessive matter is in valves	Check and replace if necessary.
	Bearings are worn	Check and replace if necessary.
WATER DRIPPING FROM UNDER PUMP	Piston packing is worn	Check and replace if necessary.
	O-Ring plunger retainer is worn	Check and replace if necessary.
	Piston is cracked	Check and replace if necessary.
	Pump protector is worn	Lower water supply pressure. Do not run the spray gun closed longer than 5 minutes.
OIL DRIPPING	Oil seal is worn	Check and replace if necessary.
EXCESSIVE VIBRATION IN DELIVERY LINE	Valves are functioning irregularly	Check and replace if necessary.
BURNER MOTOR WILL NOT RUN	Fuel pump has seized	Replace fuel pump.
	Burner fan loose or misaligned	Position correctly and tighten set screw.
	Control switch is defective	Replace switch.
	There is a loose wire	Check and replace or tighten wiring.
	Burner motor is defective	Replace motor.
RELIEF VALVE LEAKS WATER	Relief valve is defective	Replace or repair relief valve.

(For parts or information contact your local Shark dealer)



SGP SERIES PRESSURE WASHER WARRANTY

SHARK LIMITED NEW PRODUCT WARRANTY PRESSURE WASHERS

WHAT THIS WARRANTY COVERS

All SHARK PRESSURE WASHERS are warranted by SHARK to the original purchaser to be free from defects in materials and workmanship under normal use, for the periods specified below. This Limited Warranty is subject to the exclusions shown below, is calculated from the date of the original purchase, and applies to the original components only. Any parts replaced under this warranty will assume the remainder of the part's warranty period. This warranty applies to the original purchaser and is not transferable.

LIMITED LIFETIME PARTS WARRANTY:

Components manufactured by SHARK, such as frames, handles, coil wraps, float tanks, and belt guards. All heating coils will have a three year warranty. Internal components on the oil-end of all pressure washer pumps will have a seven year warranty.

ONE YEAR PARTS WARRANTY:

All other components, excluding normal wear items as described below, will be warranted for one year on parts. Warranty on these parts will be for one year regardless of the duration of the original component manufacturer's part warranty.

WARRANTY PROVIDED BY OTHER MANUFACTURERS:

Motors, generators, and engines, which are warranted by their respective manufacturers, are serviced through these manufacturers' local authorized service centers. SHARK cannot provide warranty on these items.

WHAT THIS WARRANTY DOES NOT COVER

This warranty does not cover the following items:

1. Normal wear items, such as nozzles, guns, discharge hoses, wands, quick couplers, seals, filters, gaskets, O-rings, packings, pistons, pump valve assemblies, strainers, belts, brushes, rupture disks, fuses, pump protectors.
2. Damage or malfunctions resulting from accidents, abuse, modifications, alterations, incorrect installation, improper servicing, failure to follow manufacturer's maintenance instructions, or use of the equipment beyond its stated usage specifications as contained in the operator's manual.
3. Damage due to freezing, chemical deterioration, scale buildup, rust, corrosion, or thermal expansion.
4. Damage to components from fluctuations in electrical or water supply.
5. Normal maintenance service, including adjustments, fuel system cleaning, and clearing of obstructions.
6. Transportation to service center, shop labor charges, field labor charges, or freight damage.

WHAT YOU MUST DO TO OBTAIN WARRANTY SERVICE

While not required for warranty service, we request that you register your SHARK pressure washer by returning the completed registration card. In order to obtain warranty service on items, you must return the product to an Authorized SHARK Dealer, freight prepaid, with proof of purchase, within the applicable warranty period. If the product is permanently installed, you must notify your Authorized SHARK Dealer of the defect. The Authorized Dealer will file a claim, which must subsequently verify the defect. In most cases, the part must be returned to SHARK freight prepaid with the claim. For warranty service on components warranted by other manufacturers, the Authorized Dealer can help you obtain warranty service through these manufacturers' local authorized service centers. If you are unable to resolve the warranty claim satisfactorily, write to SHARK at 4275 N.W. Pacific Rim Blvd., Camas, WA 98607, ATTN: Warranty Dept., detailing the nature of the defect, the name of the Authorized Dealer, and a copy of the purchase invoice.

LIMITATION OF LIABILITY

SHARK'S liability for special, incidental, or consequential damages is expressly disclaimed. In no event shall SHARK'S liability exceed the purchase price of the product in question. SHARK makes every effort to ensure that all illustrations and specifications are correct, however, these do not imply a warranty that the product is merchantable or fit for a particular purpose, or that the product will actually conform to the illustrations and specifications. **THE WARRANTY CONTAINED HEREIN IS IN LIEU OF ALL OTHER WARRANTIES, EXPRESS OR IMPLIED, INCLUDING ANY IMPLIED WARRANTY OF FITNESS FOR A PARTICULAR PURPOSE.** SHARK does not authorize any other party, including authorized Dealers, to make any representation or promise on behalf of SHARK, or to modify the terms, conditions, or limitations in any way. It is the buyer's responsibility to ensure that the installation and use of SHARK products conforms to local codes. While SHARK attempts to assure that its products meet national codes, it cannot be responsible for how the customer chooses to use or install the product.

SHARK PRESSURE WASHERS

4275 N.W. Pacific Rim Blvd. • Camas, WA 98607 • USA • 1-800-771-1881



4275 N.W. Pacific Rim Blvd. • Camas, WA 98607 • 1-800-771-1881

Form #97-6132 • Revised 1/03 • Printed in U.S.A.