



GLOBAL M4

**High-Speed Purpose-Built Street Sweeper
Designed for Your Needs**

- ▶ 18.5' Turning Radius
- ▶ Cab-Over Design with Unmatched Visibility
- ▶ Large 47" Gutterbrooms designed to clean the curb
- ▶ High-Performance Sweeping Package
- ▶ Unmatched Access to Engine and Sweeping Components Large
- ▶ 5.6 Cubic Yard Hopper with Access Door
- ▶ Lots of Power with Excellent Fuel Consumption

Available Alternative Fuel Options

- ▶ Compressed Natural Gas
 - ▶ Diesel Electric Hybrid
- Over 50% Fuel Savings

GLOBAL M4

ULTIMATE PERFORMANCE, SPEED AND POWER

From the modern, comfortable and well appointed operator's cab, to the toughest and most rugged mechanical sweeping system ever built, the **Global M4** is designed to take on the worst of the worst sweeping conditions. **Global M4** will outperform the competition in daily sweeping conditions such as light sweeping and leaf pick up.

With a Standard Heavy Duty Sweeping Package, **Global M4** will sweep sand, gravel up to 3-Tons per Minute. The sweeping speed of 3-11 mph allows for a very efficient operation.

The compact design, exceptional maneuverability (18.5' Turning Radius), perfect for any cul-de-sac, and superb visibility make this a perfect choice for any municipal/ governmental agency that is looking for a street sweeper that can simply fit and reduces travel time.

Global M4 Standard Equipment

- Air Conditioned Cab
- In-Cab Gutterbroom Pressure Adjustment
- Rear View Camera and LCD Monitor
- Leaf Gate System
- Heavy Sweep Package
- Hopper Access Door
- Hopper Automatic Safety Prop

Global M4 Options

- 100% Stainless Steel Hopper
- In-Cab Gutterbroom Tilt
- In-Cab Gutterbroom Speed Control
- AM/FM/CD Stereo with AUX/USB Port
- Air-Ride Seat
- Elevator and Hopper Wash-Out
- Automatic Greasing System
- (SCAQMD) PM-10 Water System
- Power and Heated Mirrors

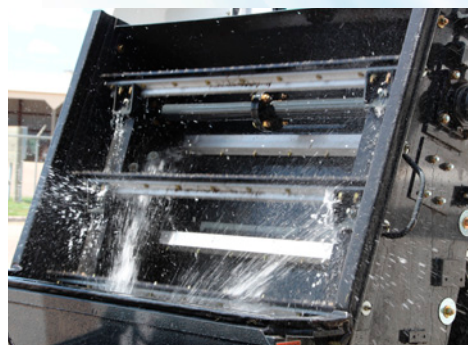


THE BEST PURPOSE-BUILT SWEEPER IN THE INDUSTRY



The inherent design of the **Global M4** makes it the logical choice among 4-wheel mechanical sweepers. With the center mounted/cab forward layout the operator has unsurpassed visibility of the road surface as well as pedestrians and surrounding traffic. The large hopper capacity equals more lane miles swept between dump cycles and the 18.5-foot turning radius makes the **Global M4** highly efficient and comfortable.

LONG LASTING DIRT SHOES Polyurethane Dirt Shoes are designed so that operator has sweep over potholes and rail road tracks and will not damage while sweeping. Long Life of 1000 hours is guaranteed. 47" Gutterbrooms assist in cleaning curbs and heavy Road Millings.



HEAVY SWEEP PACKAGE Elevator Type: Standard 11 Flight squeegee with replaceable corded rubber tips; Continuous molded rubber belts combine with standard Heavy Sweep Package make **Global M4** the logical choice for sweeping heavy debris such as road millings, sand and gravel up to 3-tons per-minute. That is one ton of sand every 20 seconds! Standard leaf gate system assists in picking up large debris, bottles, large branches and leaves.

DUST SUPPRESSION SYSTEM • **Global M4** includes 250 Gallon Water Tank Capacity combined with Two(2) Diaphragm Water pumps and Two(2) Modes (LOW/HIGH) provide versatility and superb dust control.



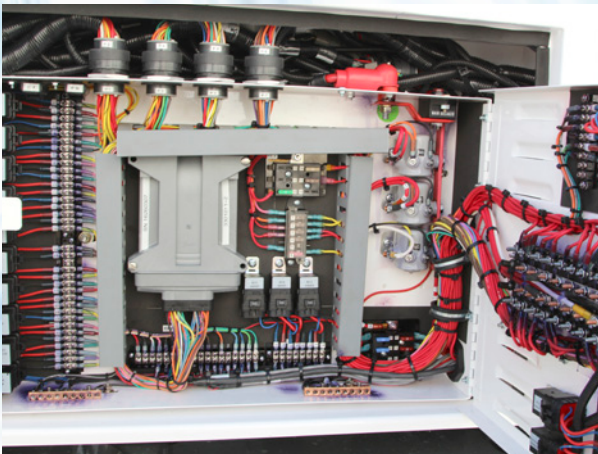
Global M4 includes a 5.6 culyd hopper capacity compared to 4.5 culyd for competitive machines resulting in more curb miles swept between dump cycles. With near Full Useable Capacity, 12,000 Lift Capacity, and the Optional Elevator and Hopper Wash Out System, **Global M4** is Affordable, Reliable and innovative.

GLOBAL M4

THE BEST PURPOSE-BUILT SWEEPER IN THE INDUSTRY



THREE POWERFUL BROOMS Optional Front Articulating brush allows for extra reach to shoulders and center islands. Via In-cab joystick, the articulating front brush can be positioned on left or right side allowing for sweeping on right or left without changing seating positions.

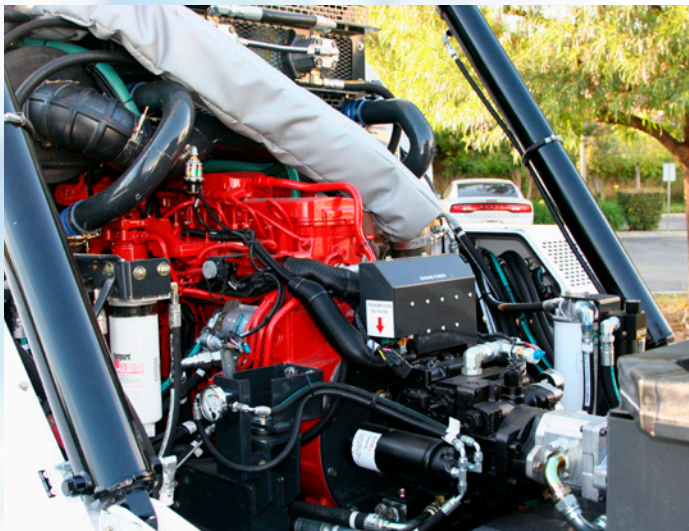


EASY TROUBLESHOOTING

A centralized, weatherproof systems locker fully protects electrical components from the elements while it allows maintenance staff easy accessibility for inspection and troubleshooting.

SINGLE ENGINE DESIGN REDUCES MAINTENANCE COSTS

Cummins ISB 6.7L 280 HP turbocharged Engine offers superb performance, less maintenance, and exceptional fuel savings compared to Dual Engine Street Sweepers, while meeting 2017 EPA/CARB Certification.



ACCESS IT ALL The Global M4 features many maintenance-friendly attributes, such as a rear swing-out radiator, easy access front mounted AC condenser, brake and windshield washer fluid reservoirs, and cab fresh air filter.

REAR VIEW CAMERA IS STANDARD Rear view camera with In-Cab 7" LCD Monitor is standard on every Global Street Sweeper.



IT'S ALL IN THE OPEN Hydraulic Hoses are NOT hidden in the frame of the sweeper, while all Manifolds and Filters are located in a central location.

The Global M4 features many maintenance-friendly attributes, such as a rear swing-out radiator, easy access front mounted AC condenser, brake and windshield washer fluid reservoirs, and cab fresh air filter.





Bortek Industries, Inc. is a locally owned and operated family company out of Mechanicsburg, PA. With over 50 years of experience, Bortek maintains a proud tradition of putting our customers first. We offer only the highest quality cleaning equipment, service, and supplies. **Please contact us for a demo at (800) 626-7835**

- ▶ Reliable Equipment
- ▶ Factory-Trained Technicians
- ▶ Quality Parts
- ▶ Helpful Customer Service
- ▶ Over 50 Years of Experience
- ▶ Locally Owned

www.sweeperland.com
contact@sweeperland.com

MADE IN THE USA 

SERVICE & FULFILLMENT CENTERS

PENNSYLVANIA LOCATIONS

4713 Gettysburg Rd. | Mechanicsburg, PA 17055
1318 Senator Bob Mellow Dr | Olyphant, PA 17434
11070 Parker Drive | North Huntingdon, PA 15642

NEW JERSEY LOCATIONS

100 N 12th St | Kenilworth, NJ 07033

CONNECTICUT LOCATIONS

130 Fort Path Road Unit #15 | Madison, CT 06443

