



## ***GLOBAL M3***

### **THE GLOBAL M3 3-WHEEL SWEEPER SETS THE STANDARD**

- ▶ 12.5' Turning Radius
- ▶ Cab-Over Design with Unmatched Visibility
- ▶ Large 47" Gutterbrooms designed to clean the curb
- ▶ High-Performance Sweeping Package
- ▶ Unmatched Access to Engine and Sweeping Components
- ▶ Front and Rear Suspension
- ▶ Large 5.6 Cubic Yard Hopper with Access Door
- ▶ Lots of Power with Excellent Fuel Economy



# GLOBAL M3

## THE ULTIMATE IN PERFORMANCE & AGILITY

From the modern, comfortable and well appointed operator's cab, to the toughest and most rugged mechanical sweeping system ever built, the **Global M3** is designed to take on the worst of the worst sweeping conditions. **Global M3** will outperform the competition in daily sweeping conditions such as light sweeping and leaf pick up.

With a Standard Heavy Duty Sweeping Package, **Global M3** will sweep sand, gravel up to 3-Tons per Minute. The sweeping speed of 3-9 mph allows for a very efficient operation. The compact design, exceptional maneuverability (**12.5' Turning Radius**), is perfect for any cul-de-sac, and superb visibility make this a perfect choice for any municipal governmental agency that is looking for a street sweeper that can simply fit anywhere.

### Global M3 Standard Equipment

- Air Conditioned Cab
- In-Cab Gutterbroom Pressure Adjustment
- Front Chalmers Suspension
- Rearview Camera and LCD Monitor
- Leaf Gate System
- Heavy-Duty Sweep Package

### Global M3 Options

- All-Wheel Suspension
- 100% Stainless Steel Hopper
- In-Cab Gutterbroom Tilt
- In-Cab Gutterbroom Speed Control
- AM/FM/CD Stereo with AUX/USB Port
- Air-Ride Seat
- Elevator and Hopper Flusher
- Automatic Greasing System
- (SCAQMD) PM-10 Water System

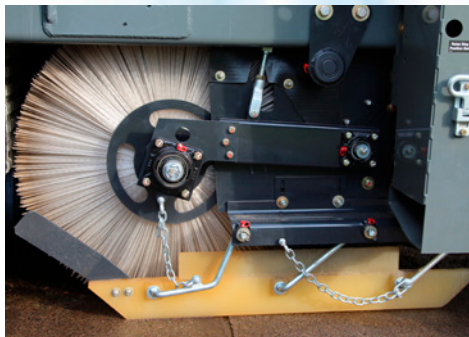


## 3-Wheel SWEEPER THAT SETS THE STANDARD



The inherent design of the **Global M3** makes it the logical choice among 3-wheel mechanical sweepers. With the center mounted/cab forward layout, the operator has un-surpassed visibility of the road surface as well as pedestrians and automotive traffic. The industry leading hopper size provides more lane miles swept between dump cycles and 12.5-foot turning radius makes the **Global M3** highly-efficient and comfortable to operate.

**LONG LASTING DIRT SHOES** Polyurethane Dirt Shoes are designed so that operator can sweep over potholes and rail road tracks and will not damage while sweeping. Long Life of 1000 hours is guaranteed.



**DUST SUPPRESSION SYSTEM** • **Global M3** includes 230 Gallon Water Tank Capacity combined with Two(2) Diaphragm Water pumps and Two(2) Modes (LOW/HIGH) provide versatility and superb dust control.



**HEAVY SWEEP PACKAGE** Elevator Type: 11 Flight squeegee with replaceable corded rubber tips; Continuous molded rubber belts and a Direct drive Hydraulic Motor: Optional ELEVATOR WASH-OUT System significantly reduces end of day cleaning for the operator.



**LARGEST HOPPER IN IT'S CLASS** The **Global M3** includes a 5.6 cu/yd hopper capacity compared to 3.5 cu/yd for competitive machines resulting in more curb miles swept between dump cycles. With near Full Useable Capacity, 12,000 Lift Capacity, and the Optional Hopper Wash Out System, Global M3 is Affordable, Reliable and innovative.



# GLOBAL M3

## 3-Wheel SWEEPER THAT SETS THE STANDARD



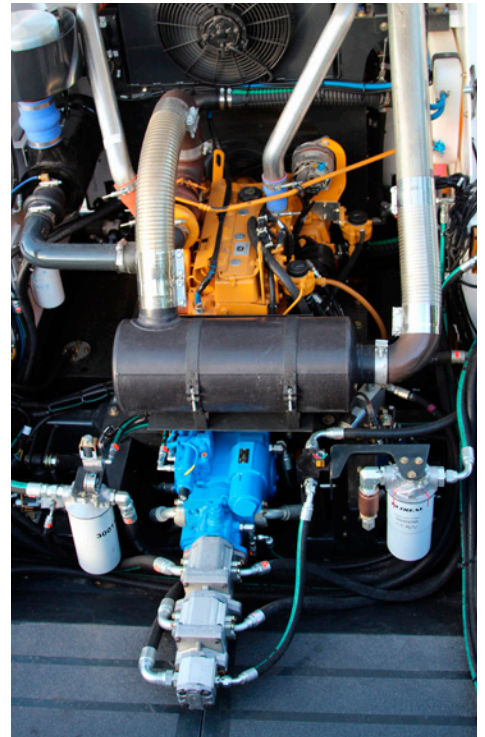
**SIMPLY MAINTAINABLE** The Global M3 is designed to make routine maintenance easy, so your sweeper spends more time on the street and less time in the garage. Two swing-out center body panels provide unrestricted access for elevator adjustment, maintenance and daily cleaning.

**IT'S ALL IN THE OPEN** Hydraulic Hoses are NOT hidden in the frame of the sweeper, while all Manifolds and Filters are located in a central location.



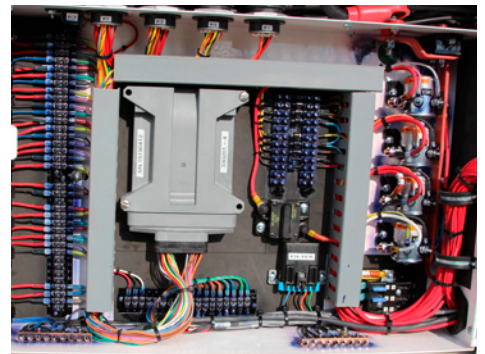
### 3 POWERFUL BROOMS

Optional Front Articulating brush allows for extra reach to shoulders and center islands. Via In-cab joystick, the articulating front brush can be positioned on left or right side allowing for sweeping on right or left without changing seating positions.



### PARTICULATE FILTER AND DEF NOT REQUIRED

The **Global M3** Engine is a fuel-efficient Tier 4 Flex 4-cylinder, turbocharged 115-horsepower John Deere diesel engine, largest in its class, delivering outstanding performance and reliability and fuel consumption.



**EASY TROUBLESHOOTING** A centralized, weatherproof systems locker fully protects electrical components from the elements while it allows maintenance staff easy accessibility for inspection and troubleshooting.

The **Global M3** features many maintenance-friendly attributes, such as a rear swing-out radiator, easy access front mounted AC condenser, brake and windshield washer fluid reservoirs, and cab fresh-air filter.







**Bortek Industries, Inc.** is a locally owned and operated family company out of Mechanicsburg, PA. With over 50 years of experience, Bortek maintains a proud tradition of putting our customers first. We offer only the highest quality cleaning equipment, service, and supplies. **Please contact us for a demo at (800) 626-7835**

- ▶ Reliable Equipment
- ▶ Factory-Trained Technicians
- ▶ Quality Parts
- ▶ Helpful Customer Service
- ▶ Over 50 Years of Experience
- ▶ Locally Owned

[www.sweeperland.com](http://www.sweeperland.com)  
[contact@sweeperland.com](mailto:contact@sweeperland.com)

MADE IN THE USA 

## SERVICE & FULFILLMENT CENTERS

### PENNSYLVANIA LOCATIONS

4713 Gettysburg Rd. | Mechanicsburg, PA 17055  
1318 Senator Bob Mellow Dr | Olyphant, PA 17434  
11070 Parker Drive | North Huntingdon, PA 15642

### NEW JERSEY LOCATIONS

100 N 12th St | Kenilworth, NJ 07033

### CONNECTICUT LOCATIONS

130 Fort Path Road Unit #15 | Madison, CT 06443

