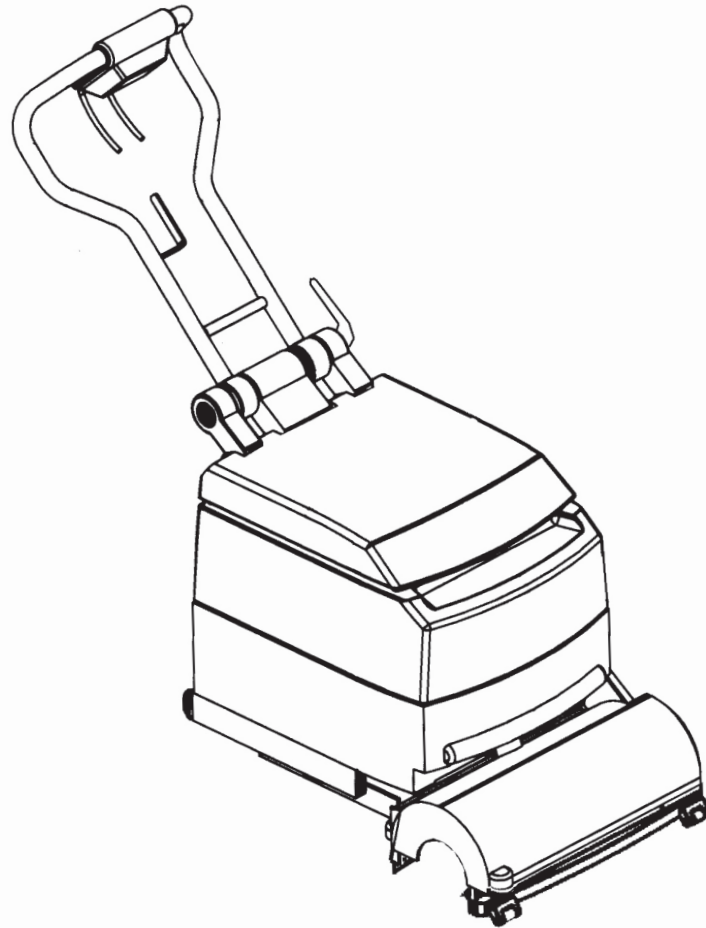


Micromatic™ 14 E



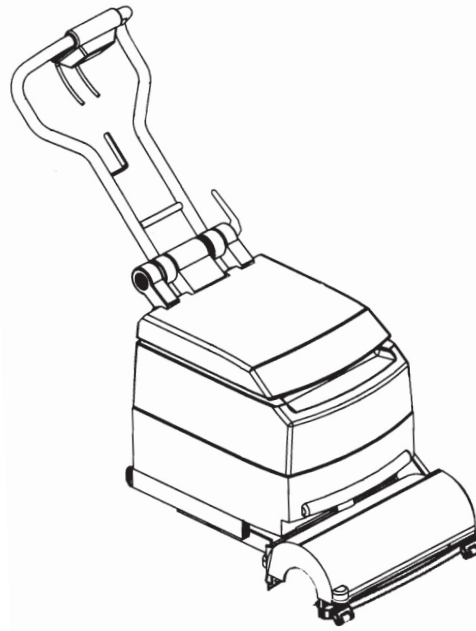
PARTS LIST

Advance model: L08992029



Advance

L08603315(5)2010-03
Form Number 56042316



DESCRIPTION

PLAN

| | |
|------------------------|---------|
| CHASSIS SYSTEM | 2 - 3 |
| TWO TANK VERSION | 4 - 5 |
| SOLUTION SYSTEM | 6 - 7 |
| BRUSH DRIVE SYSTEM | 8 - 9 |
| SQUEEGEE SYSTEM | 10 - 11 |
| VACUUM SYSTEM | 12 - 13 |
| FRAME SYSTEM | 14 - 15 |
| HANDLE SYSTEM | 16 - 17 |
| WIRING SYSTEM 110-60Hz | 18 - 19 |
| WIRING DIAGRAM | 20 |

WHEN ORDERING PARTS

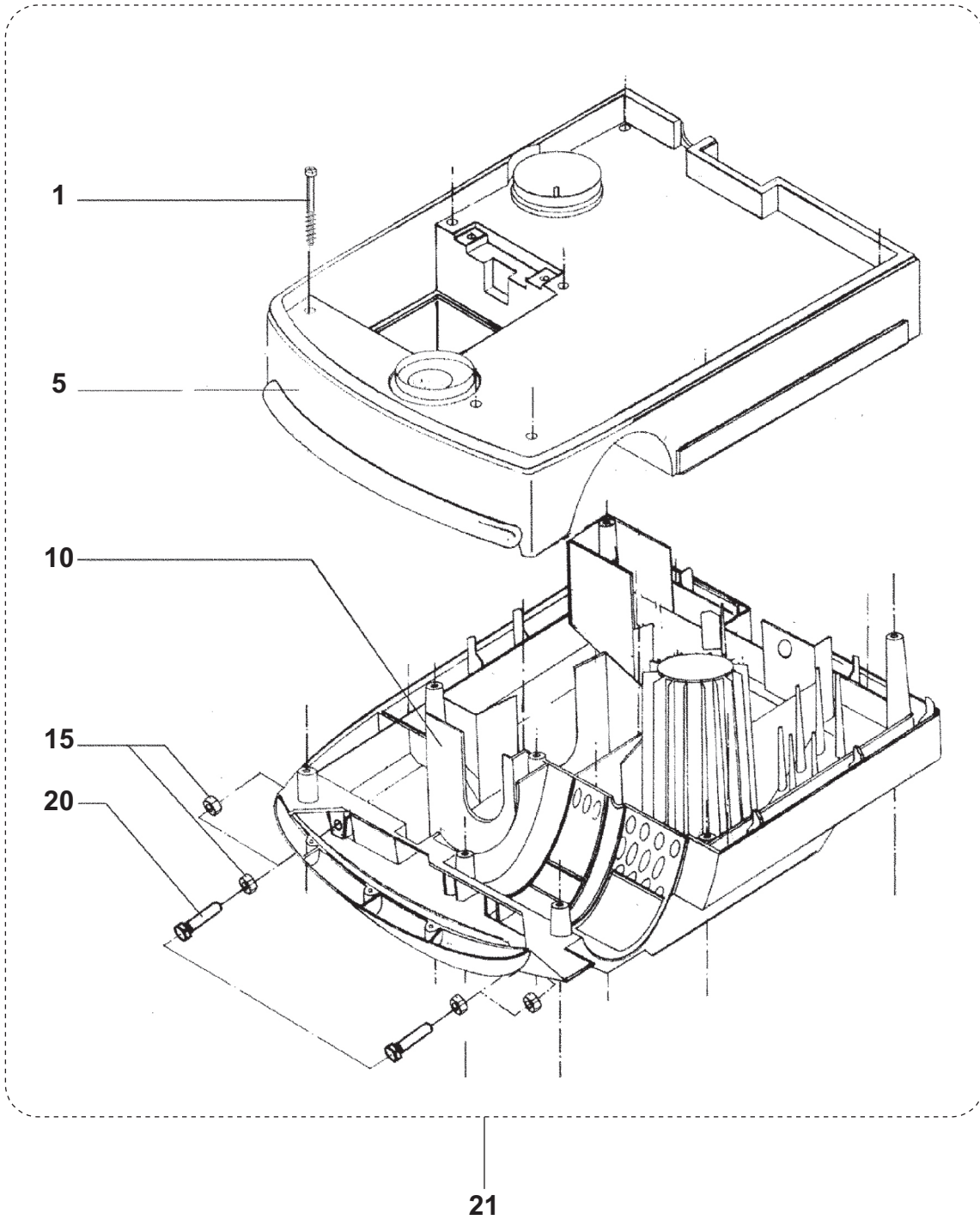
- * Use the 8, 9 or 10 digit numbers from the "Ref. No." columns in this parts list.
- * Specify the model and serial number of the machine.
- * Use the space below to record the model and serial number for future reference.

Model _____ Serial No. _____

*** = *Optional***

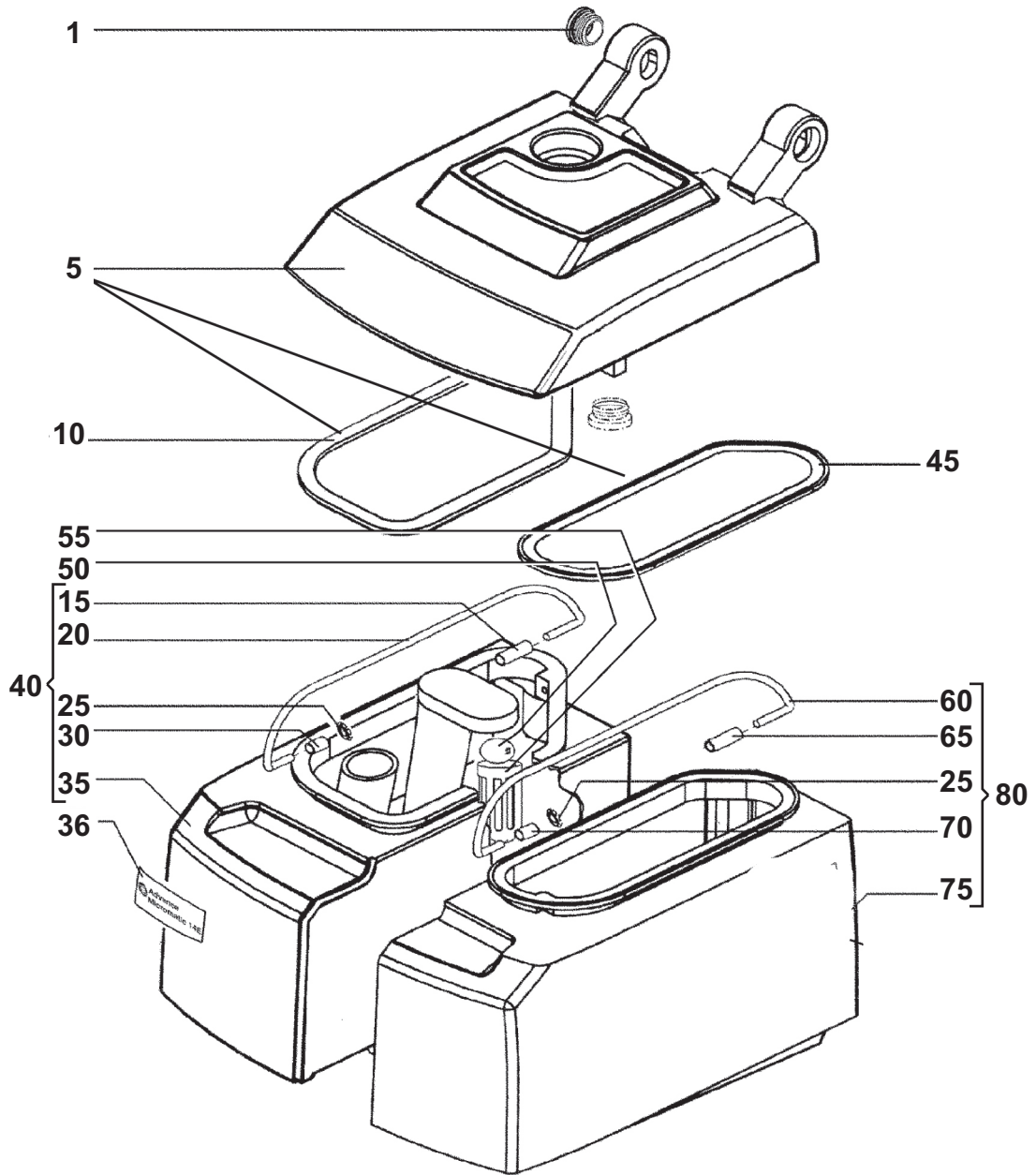
= *Modified item No. or New item No.*

[] = *Not shown*



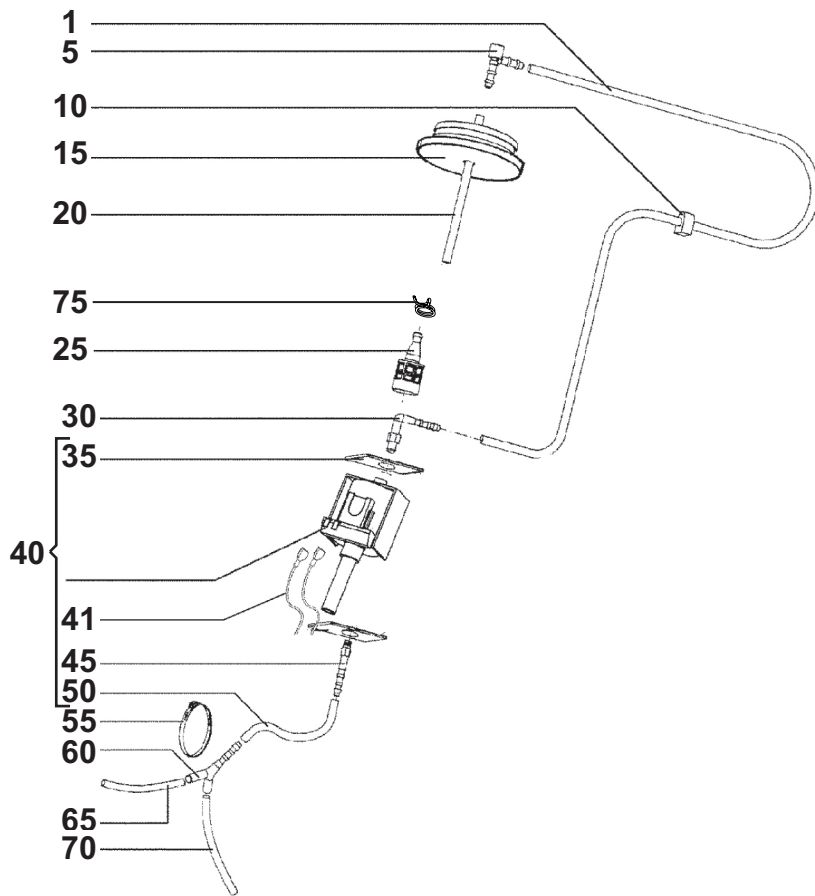
| | | | |
|---------|------------------|--|---|
| 2010-03 | CHASSIS SYSTEM | | |
| 2002-05 | Micromatic™ 14 E | | 3 |

| Item | Ref. No. | Qty | Description |
|------|--------------|-----|--------------------------------|
| 1# | 909 5893 000 | 8 | SCREW CYL HD 6X60 SELF LOCKING |
| 5 | L08603367 | 1 | FRAME UPPER |
| 10 | L08603368 | 1 | FRAME LOWER |
| 15 | L08603206 | 4 | NUT HEX M8UNI5588SS |
| 20# | L08603707 | 2 | SCREW M8X30 UNI9327 |
| 21 | L08603433 | 1 | CHASSIS KIT |

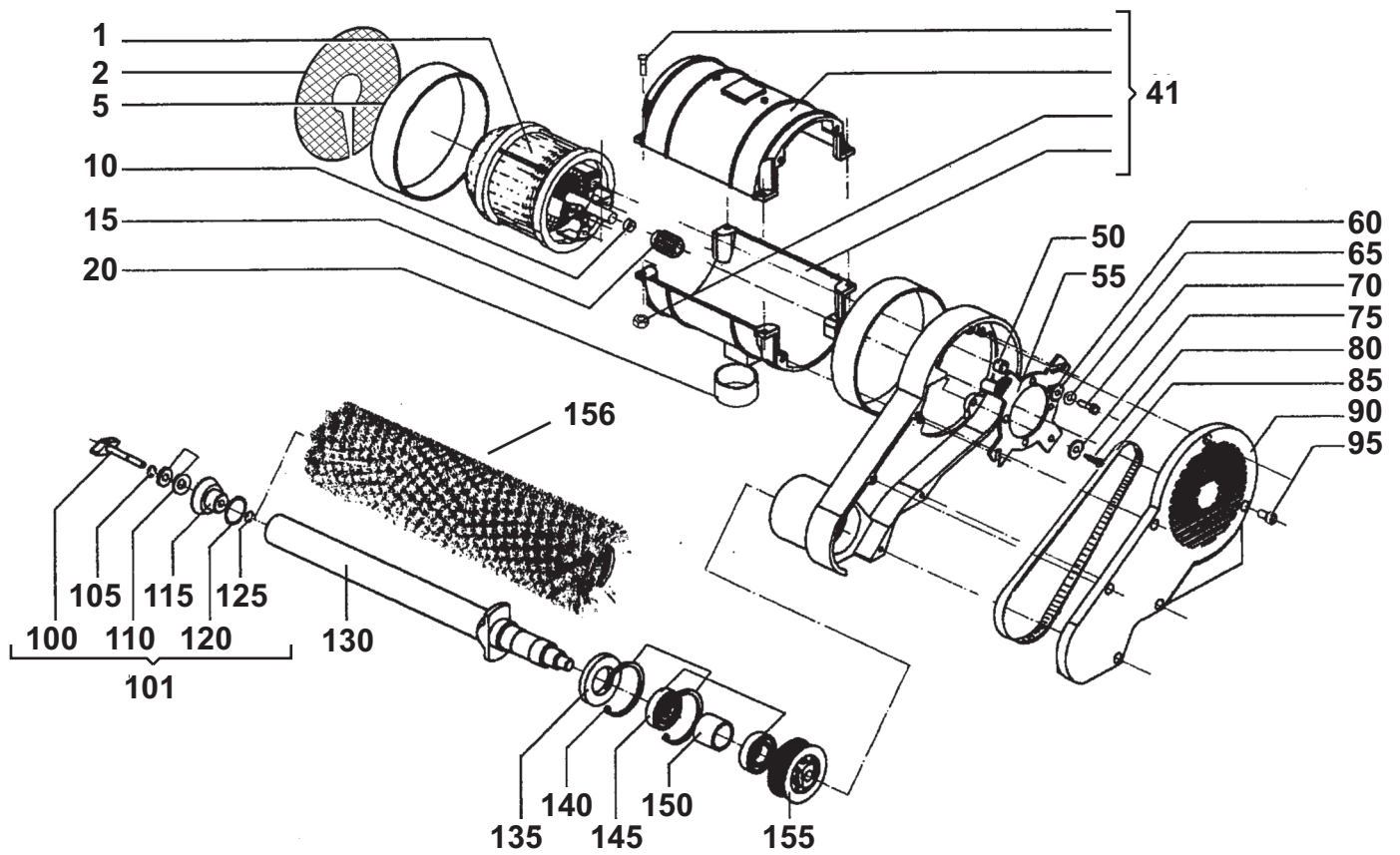


| | | | | |
|---------|------------------|--|--|---|
| 2010-03 | TWO TANK VERSION | | | |
| 2002-05 | Micromatic™ 14 E | | | 5 |

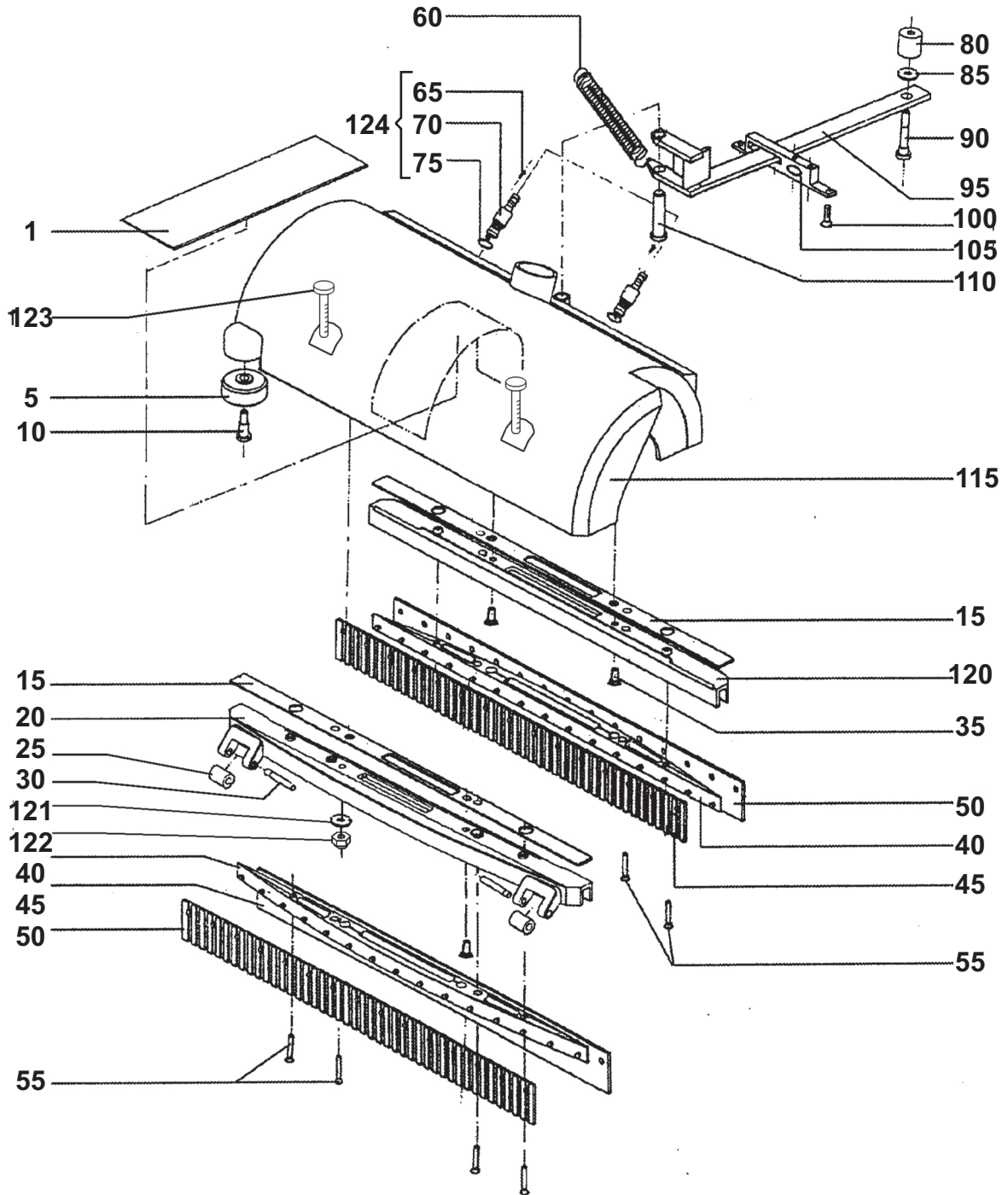
| Item | Ref. No. | Qty | Description |
|-------|-----------|-----|-------------------------------|
| 1 | L08602117 | 1 | PLUG D.40 |
| 5 | L08603084 | 1 | TANK COVER WITH GASKET |
| 10 | L08603230 | 1 | GASKET COVER KIT |
| 15 | L08603239 | 1 | SPACER 7X10X32 |
| 20 | L08603116 | 1 | GRIP RECOVERY TANK |
| 25 | L08603255 | 4 | COVER PIN |
| 30 | L08603240 | 1 | SPACER 7X10X14 |
| 35 | L08603119 | 1 | TANK RECOVERY 11 LITERS |
| 36# | L08603806 | 1 | DECAL ADVANCE MICROMATIC |
| 40# | L08603235 | 1 | TANK RECOVERY WITH HANDLE KIT |
| 45 | L08603229 | 1 | GASKET COVER KIT |
| 50 | L08092600 | 1 | BALL FLOATING |
| 55 | L08603088 | 1 | CAGE FLOAT |
| 60 | L08603115 | 1 | GRIP SOLUTION TANK |
| 65 | L08603117 | 1 | SPACER 7X10X19 |
| 70 | L08603240 | 1 | SPACER 7X10X14 |
| 75 | L08603118 | 1 | TANK SOLUTION 11 LITERS |
| 80# | L08603234 | 1 | TANK SOLUTION KIT |
| [81]# | L08603365 | 1 | TWO TANKS WATER KIT |



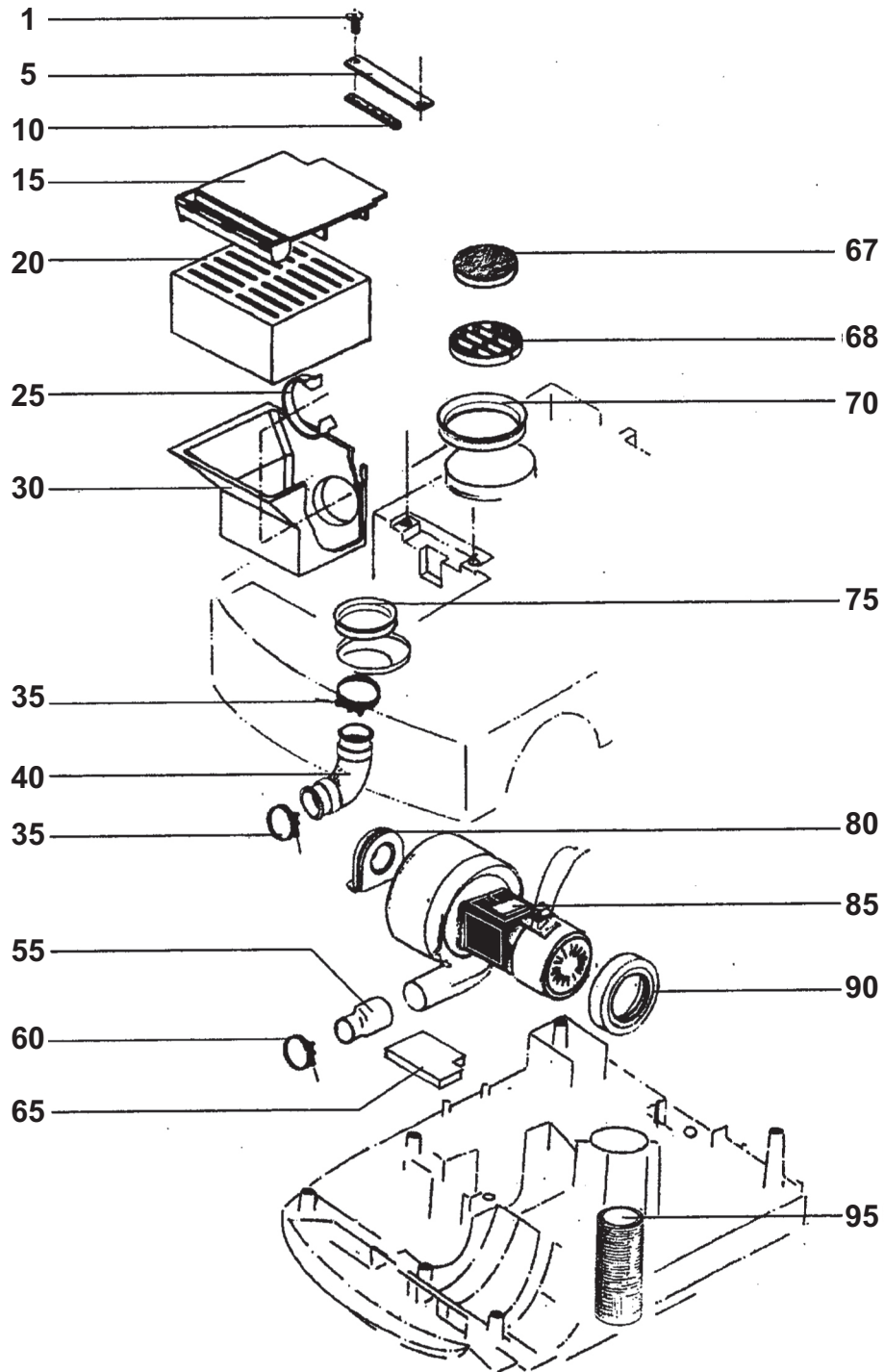
| Item | Ref. No. | Qty | Description |
|------|-----------|-----|----------------------------|
| 1 | L08603735 | 1 | HOSE TRANSPARENT D.6 L.900 |
| 5 | L08603189 | 1 | HOLDER RUBBER 90° D.6 |
| 10 | L08603129 | 1 | CHOCK D.13 BLACK |
| 15# | L08603742 | 1 | PLUG WITH HOLE |
| 20 | L08603225 | 1 | HOSE D.6 L.270 |
| 25 | L08603126 | 1 | FILTER SOLUTION |
| 30 | L08603131 | 1 | HOLDER RUBBER 1/8 90 D.6 |
| 35 | L08603246 | 2 | SPONGE ANTIDUST |
| 40 | L08603307 | 1 | PUMP WITH RESISTOR KIT |
| 41 | L08603352 | 2 | WIRE WHITE FOR CAPACITOR |
| 45 | L08603130 | 1 | HOLDER RUBBER 1/8 D.6 |
| 50 | L08603752 | 1 | HOSE TRANSPARENT D.6 L.250 |
| 55 | L08145700 | 1 | CLAMP 2.4X91 WHITE |
| 60 | L08603133 | 1 | HOLDER RUBBER T D.6 |
| 65 | L08603223 | 1 | HOSE TRANSPARENT D.6 L.165 |
| 70 | L08603224 | 1 | HOSE TRANSPARENT D.6 L.95 |
| 75 | L08812124 | 1 | PUMP W/NIPPLE 100-125V KIT |
| [80] | L08603881 | 1 | CLAMP SELF LOCKING 8.3-8 |



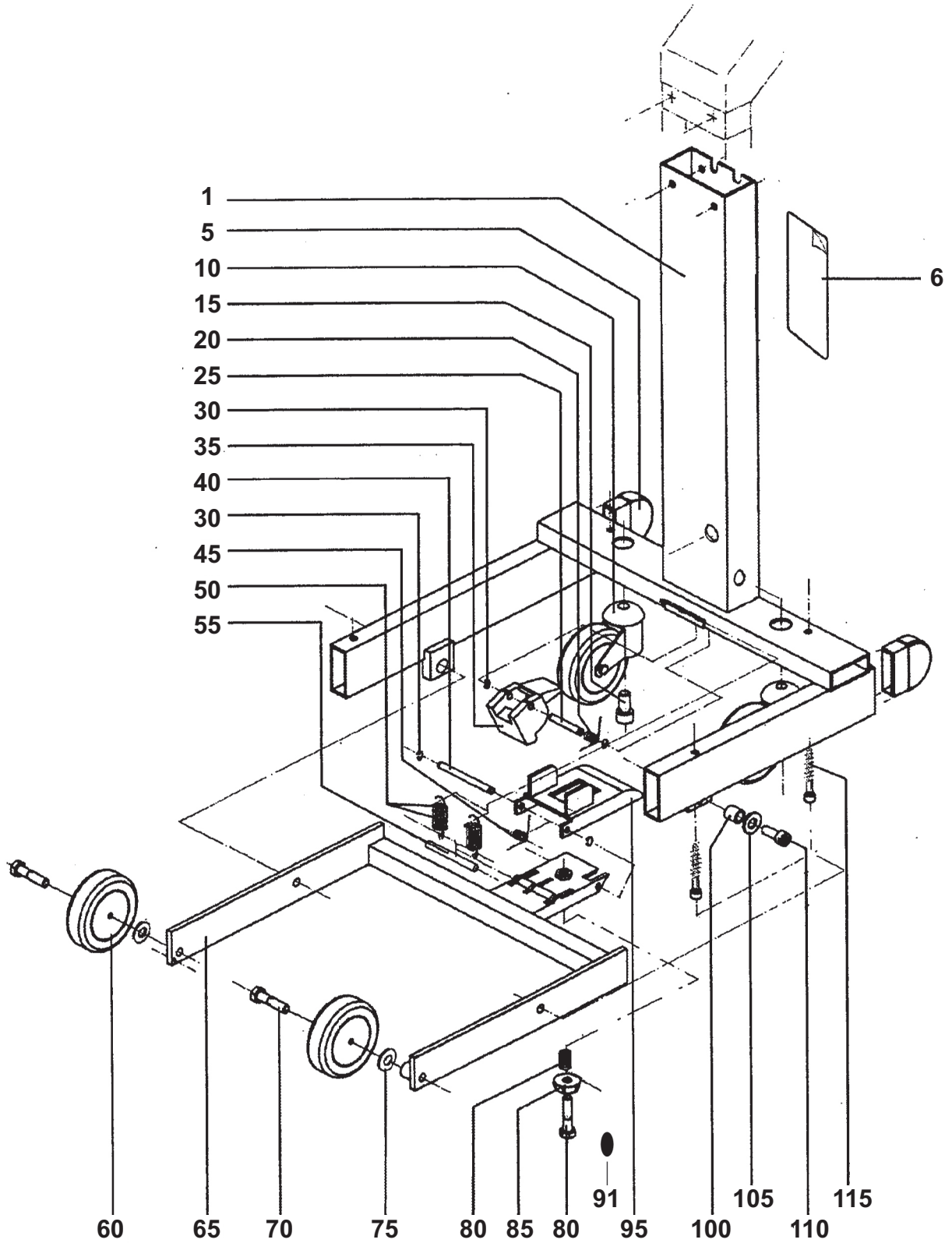
| Item | Ref. No. | Qty | Description |
|-------|--------------|-----|--|
| 1 | L08603259 | 1 | MOTOR ELECTRIC W370 110V |
| 2 | L08812032 | 1 | DEFLECTOR |
| 5 | L08603022 | 2 | RING RUBBER |
| 10 | L08603258 | 1 | SPACER 11X16 UNI6592 |
| 15 | L08603750 | 1 | PULLEY TOOTHED W/WASHER CPL |
| 20 | L08603023 | 1 | RING RUBBER |
| 41 | L08603253 | 1 | SHELL SCREWD FOR ELECTRIC MOTOR |
| 45 | L08603010 | 1 | HOUSING MOTOR |
| 50 | L08603018 | 4 | SPACER 7.5X12X8 |
| 55 | L08603016 | 1 | FLANGE BRUSH MOTOR |
| 60 | L08603017 | 4 | SPACER |
| 65 | L08241500 | 4 | WASHER M5 UNI6592 SS |
| 70 | L08812104 | 4 | SCREW M5X18 UNI5931 |
| 75 | L08228600 | 4 | WASHER 6X18 UNI6592 |
| 80# | 33004346 | 4 | SCREW M6X20 UNI5931 |
| 85 | L08603177 | 1 | BELT HTD 5M A 500 |
| 90 | L08603001 | 1 | COVER BRUSH MOTOR |
| 95# | 145 1964 000 | 6 | SCREW M6X12 UNI5931 SS |
| 100 | L08603241 | 1 | SCREW WING KIT |
| 101 | L08812081 | 1 | HARDWARE BRUSH FIXING KIT |
| 105 | L08228600 | 1 | WASHER 6X18 UNI6592 |
| 110 | L08812686 | 2 | SPACER 7X18X3 |
| 115 | L08603004 | 1 | BUSH BRUSH FIXING |
| 120 | L08095000 | 1 | O-RING 4106 |
| 125 | L08601534 | 1 | RING RADIAL D6 UNI7434 |
| 130 | L08603003 | 1 | SHAFT |
| 135 | L08603005 | 1 | OIL SEAL 30X52X7 |
| 140# | 33006181 | 2 | RING D.52 UNI7437 |
| 145 | L08041900 | 3 | BALL BEARING |
| 150 | L08603008 | 1 | SPACER 25.5X30X24.5 |
| 155 | L08603009 | 1 | PULLEY BRUSH SHAFT |
| 156 | L08425200 | 1 | BRUSH CYLINDRICAL NYLON 100X330 BLUE - PACKED |
| [157] | L08425300 | 1 | BRUSH AGLITE GRIT 500 - PACKED |
| [158] | L08603250 | 1 | WEAR PACK KIT(L08425200 no.1 - L08603042 no.2 - L08603044 no.2 - L08603096 no.1 - L08603110 no.1) |
| [159] | L08603251 | 1 | WEAR PACK KIT(L08425300 no.1 - L08603042 no.2 - L08603044 no.2 - L08603096 no.1 - L08603110 no.1) |



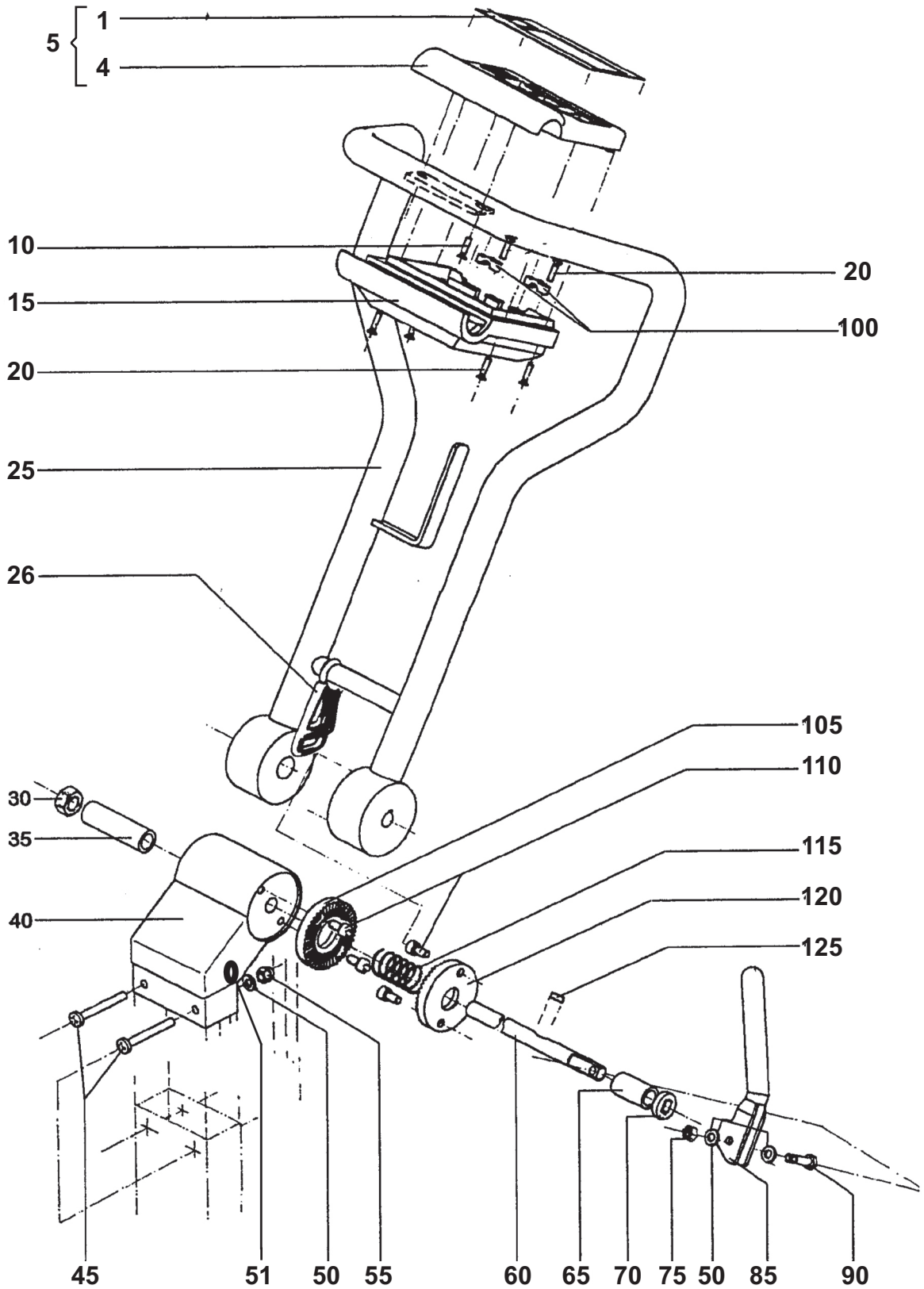
| Item | Ref. No. | Qty | Description |
|-------|-----------|-----|--|
| 1 | L08603026 | 1 | PANEL FOR BRUSH COVER |
| 5 | L08603027 | 2 | ROLLER BUMPER |
| 10 | L08220100 | 2 | SCREW M6X16 DIN923 |
| 15 | L08603039 | 2 | SEAL BLADE HOLDER |
| 20 | L08603397 | 1 | HOLDER FRONT BLADE |
| 25 | L08603402 | 2 | ROLLER |
| 30 | L08812122 | 2 | PIN 6.3X40 UNI6873 |
| 35 | L08603744 | 2 | SCREW M5X16 UNI7887 SS |
| 40 | L08603040 | 2 | RETAINING STRIP |
| 45 | L08603044 | 2 | BLADE FRONT INTERNAL 32 MM H |
| 50 | L08603042 | 2 | BLADE FRONT EXT.34 MM H |
| 55 | L08603203 | 8 | SCREW M5X25 UNI7689 SS |
| 60 | L08603037 | 1 | SPRING |
| 65 | L08603359 | 2 | SCREW 3.9X9.5 |
| 70 | L08603357 | 2 | HOLDER RUBBER |
| 75 | L08603358 | 2 | O-RING 6.5x2 NBR |
| 80 | L08603030 | 1 | SPACER 6.5X20X19.3 |
| 85 | L08603736 | 1 | SPACER 6.5X18X3.5 |
| 90 | L08603035 | 1 | SCREW M6X41 UNI5931 |
| 95 | L08603031 | 1 | LEVER BRUSH CONTROLLING |
| 100 | L08603378 | 2 | SCREW 4.2X19 |
| 105 | L08812009 | 1 | GUIDE |
| 110 | L08603036 | 1 | BOLT |
| 115 | L08603728 | 1 | COVER CYL.BRUSH |
| 120 | L08603038 | 1 | HOLDER REAR BLADE |
| 121 | L08200800 | 2 | WASHER M4 UNI6592 SS |
| 122 | L08603685 | 2 | NUT SELF L. M4 UNI7474 SS |
| 123 | L08603733 | 2 | SCREW M4X40 UNI7687 SS |
| 124# | L08603028 | 2 | PIPE FITTING KIT (65-70-75) |
| [125] | L08603362 | 1 | BLADE FRONT KIT (20-40-36-45-50-55-15-25-30) |
| [126] | L08603361 | 1 | BLADE REAR KIT (15-120-40-35-45-45-50-55) |
| [127] | L08603480 | 1 | CARTER BRUSH KIT (65-70-75-115-121-122-123) |
| [128] | L08812754 | 1 | COVER BRUSH COMPLETE KIT (127-5-10-20-120-45-50-40-35-55-25-15-30) |



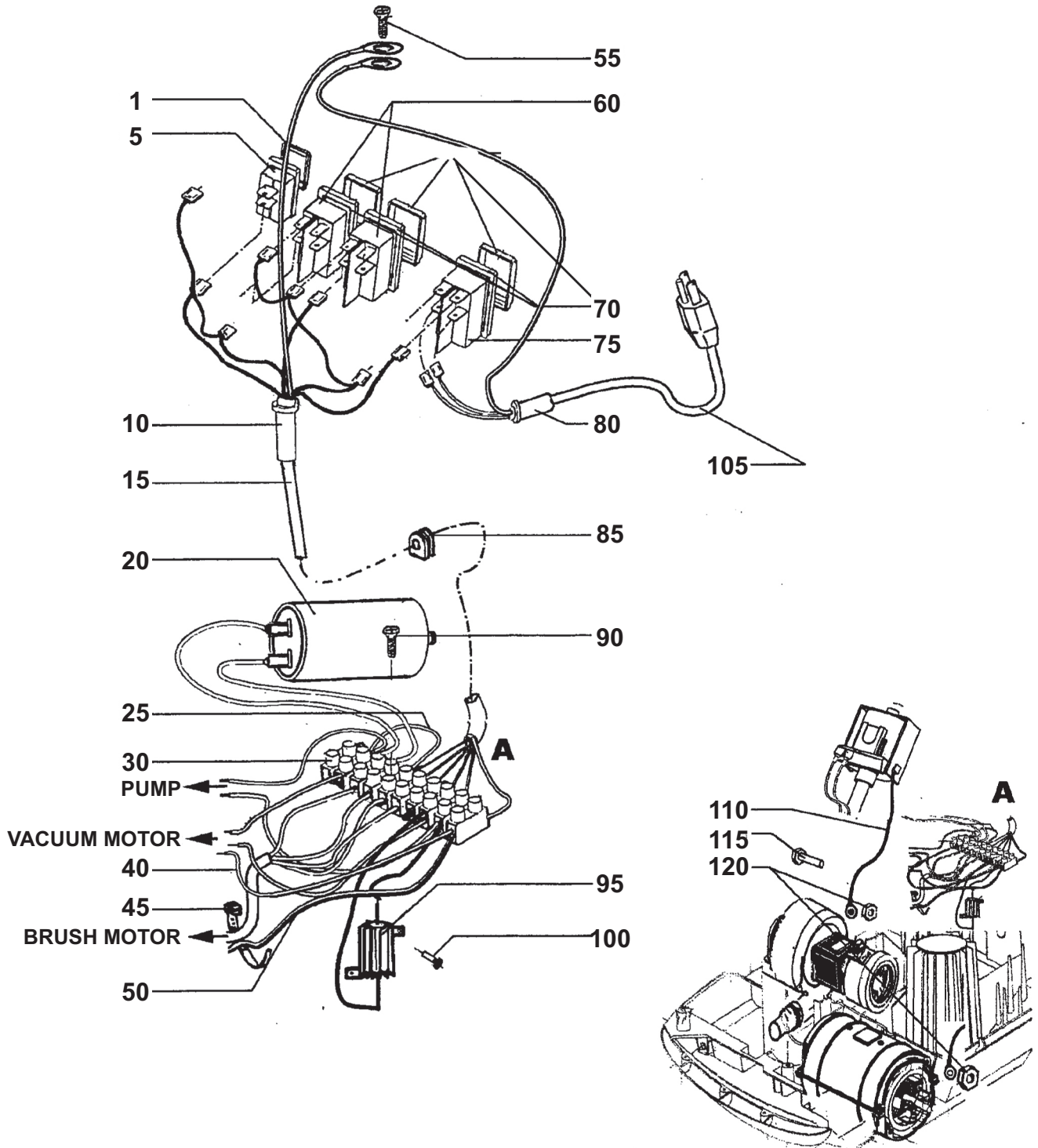
| Item | Ref. No. | Qty | Description |
|------|-----------|-----|----------------------------|
| 1 | L08601157 | 2 | SCREW THD FORMING 4.9X20 |
| 5 | L08603187 | 1 | PLATE FOR GASKET |
| 10 | L08603188 | 1 | GASKET FOR PANEL |
| 15 | L08603108 | 1 | COVER |
| 20 | L08603104 | 1 | TOP SOUND INSULTATION |
| 25 | L08603174 | 1 | CLAMP FOR INSULATION |
| 30 | L08603103 | 1 | BOTTOM SOUND INSULATION |
| 35 | L08600269 | 2 | CLAMP 9/25-40 |
| 40 | L08603092 | 1 | HOSE SUCTION |
| 55 | L08603101 | 1 | SLEEVE VACUUM MOTOR |
| 60 | L08601663 | 1 | CLAMP 32-50 |
| 65 | L08603102 | 1 | PANEL DAMPER |
| 67 | L08603096 | 1 | PRE FILTER VACUUM MOTOR |
| 68 | L08603097 | 1 | GRATE FILTER PROTECTION |
| 70 | L08603095 | 1 | SEAL SUCTION HOSE |
| 75 | L08603094 | 1 | SEAL |
| 80 | L08603098 | 1 | VIBRATION DAMPING |
| 85 | L08603260 | 1 | MOTOR VACUUM 120V 60HZ |
| 90 | L08603100 | 1 | SEAL VACUUM MOTOR FAN SIDE |
| 95 | L08603110 | 1 | FILTER VACUUM MOTOR |



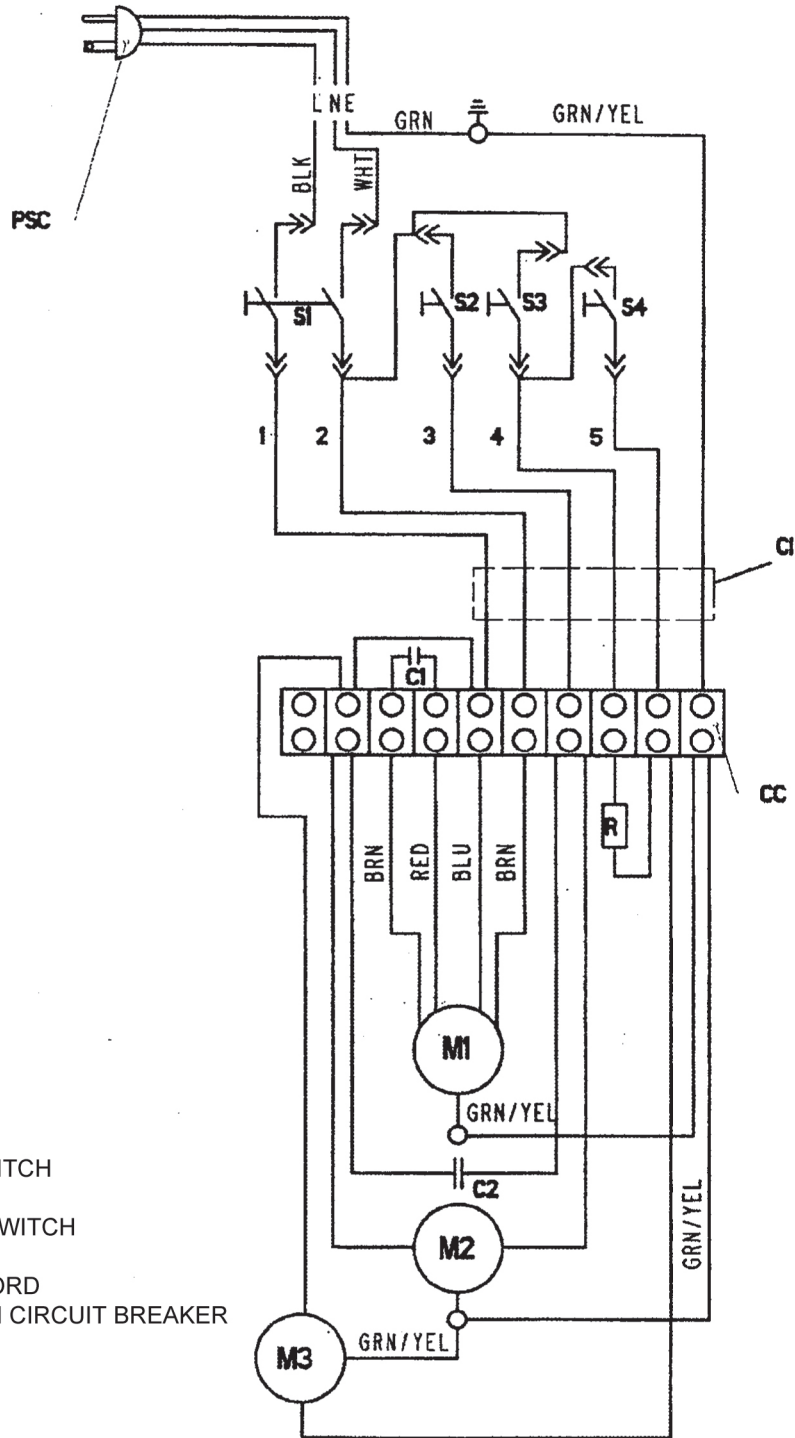
| Item | Ref. No. | Qty | Description |
|-------|--------------|-----|-------------------------------------|
| 1 | L08603066 | 1 | FRAME |
| 5 | L08603068 | 2 | PLUG |
| 6# | L08603805 | 1 | DECAL WARNING |
| 10 | L08603076 | 2 | WHEEL CASTOR |
| 15# | 145 5742 000 | 2 | SCREW M10X20 UNI5931 |
| 20 | L08603071 | 1 | SPRING |
| 25 | L08603069 | 1 | PIN |
| 30 | L08603183 | 4 | RING RADIAL D 4 UNI7434 |
| 35 | L08603354 | 1 | BLOCK BRUSH PEDAL |
| 40 | L08603356 | 1 | PIN BRUSH PEDAL |
| 45 | L08603075 | 1 | SPRING BRUSH PEDAL |
| 50 | L08603061 | 2 | SPRING BRUSH LIFTING FRAME |
| 55 | L08603062 | 1 | PIN BRUSH LIFTING FRAME |
| 60 | L08603060 | 2 | WHEEL DRIVE |
| 65 | L08603057 | 1 | FRAME BRUSH LIFTING |
| 70 | L08603181 | 2 | SCREW M8X35 UNI5739 SS |
| 75 | L08603207 | 2 | WASHER M8 UNI6592 SS |
| 80 | L08603064 | 1 | SPRING BRUSH PEDAL |
| 85 | L08603065 | 1 | KNOB |
| 90 | L08603063 | 1 | SCREW M8X35 UNI5739 SS |
| 91 | L08603746 | 1 | CAP SCREW M8 SS |
| 95 | L08603355 | 1 | PEDAL BRUSH CONTROL |
| 100 | L08603055 | 2 | BUSH |
| 105 | L08603207 | 2 | WASHER M8 UNI6592 SS |
| 110 | L08812803 | 2 | SCREW M8X20 UNI5931 SELFL |
| 115 | L08603377 | 4 | SCREW THD FORM 6X25 |
| [120] | L08603353 | 1 | PEDAL BRUSH LIFTING KIT (35-40-95) |



| Item | Ref. No. | Qty | Description |
|------|--------------|-----|-------------------------------|
| 1 | L08603155 | 1 | DECAL CONTROL PANEL |
| 4# | 909 5846 000 | 1 | HOUSING SWITCH UPPER |
| 5 | L08603287 | 1 | DECAL CONTROL PANEL KIT |
| 10 | L08603244 | 2 | SCREW 3.9X13 UNI6954 |
| 15# | 909 5847 000 | 1 | HOUSING SWITCH LOWER |
| 20 | L08603192 | 8 | SCREW THD FORMING 3.6X16 |
| 25# | L08603145 | 1 | HANDLE BAR |
| 26 | L08601101 | 1 | HOLDER CABLE |
| 30 | L08601000 | 1 | NUT SELF LOCKING M12 UNI7473 |
| 35 | L08603142 | 1 | SPACER 13X18X62 |
| 40 | L08603136 | 1 | SUPPORT HANDLE BAR |
| 45 | L08603190 | 2 | SCREW M6X50 UNI7687 |
| 50# | 33005913 | 2 | WASHER M6 UNI6592 |
| 51# | 33005851 | 2 | WASHER M6 UNI1751B |
| 55 | L08050200 | 2 | NUT HEX M6 UNI5721 |
| 60 | L08603140 | 1 | SHAFT HANDLE ADJUSTING LEVER |
| 65 | L08603191 | 1 | SPACER 13X18X32 |
| 70 | L08603143 | 1 | SPACER HANDLE ADJUSTING LEVER |
| 75# | 33005604 | 1 | NUT SELF LOCKING M6 UNI7474 |
| 85 | L08603146 | 1 | LEVER HANDLE ADJUSTING |
| 90 | L08603175 | 1 | SCREW M6X25 UNI5737 |
| 100 | L08600168 | 2 | BLOCK CABLE FIXING |
| 105 | L08603137 | 1 | RATCHET DISC |
| 110 | L08600149 | 4 | SCREW M6X12 UNI5931 |
| 115 | L08603144 | 1 | SPRING |
| 120 | L08603138 | 1 | RATCHET DISC |
| 125 | L08603141 | 1 | KEY 4X4X12 UNI6604A |

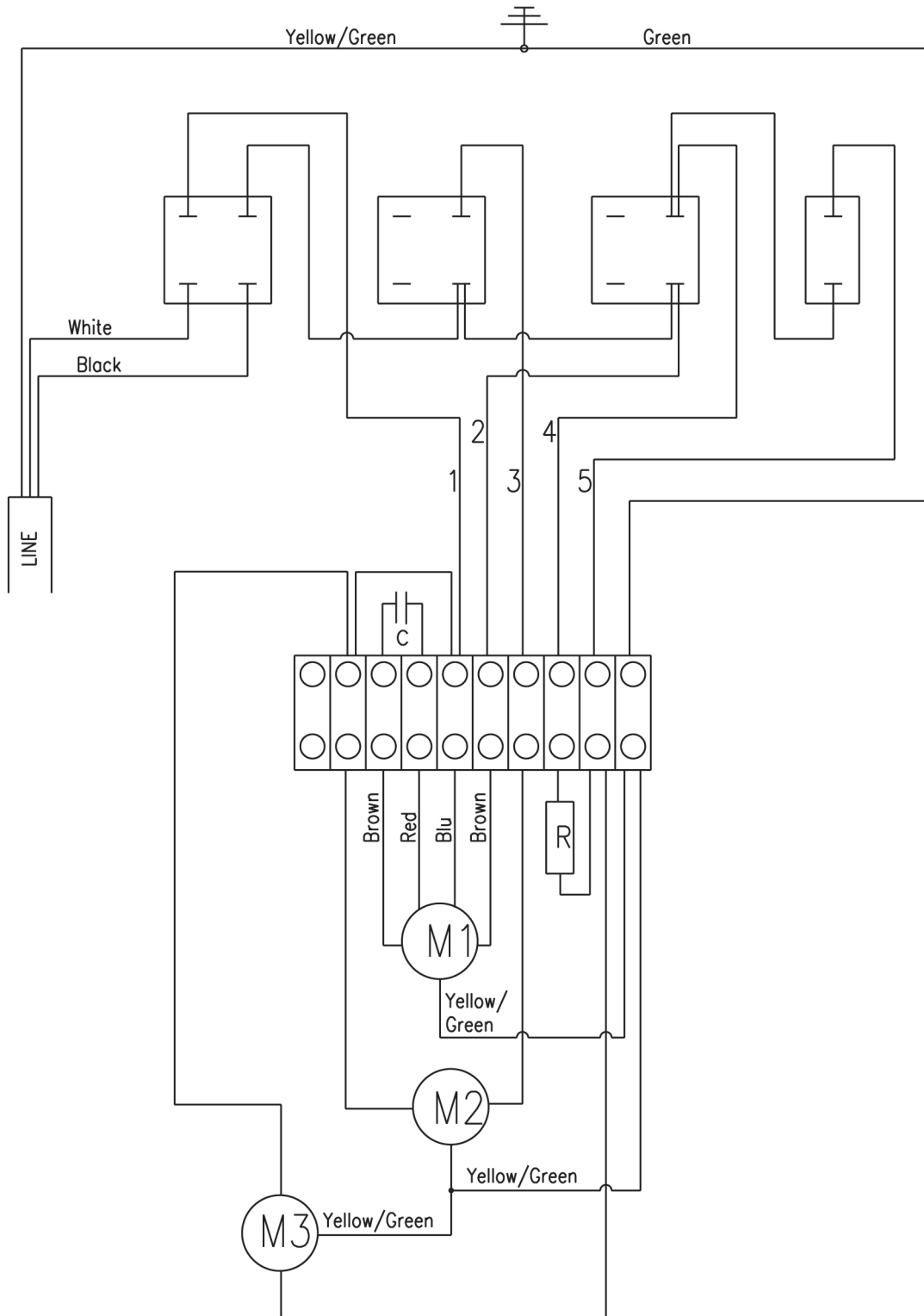


| | Ref. No. | Qty | Description |
|--|----------|--------------|---|
| | 1 | L08603154 | 1 PROTECTION CAP |
| | 5 | L08603153 | 1 SWITCH PUMP |
| | 10 | L08603150 | 1 CHOCK |
| | 15 | L08603300 | 1 CABLE CONTROL PANEL - TERMINAL BOARD |
| | 20 | L08603303 | 1 CAPACITOR 250V |
| | 25 | L08603756 | 1 CABLE BRIDGE |
| | 30 | L08603196 | 1 TERMINAL BOARD |
| | 40 | L08603310 | 1 CABLE ELECTRIC GREEN-YELLOW L.230MM |
| | 45 | L08145700 | 1 CLAMP 2.4x91 WHITE |
| | 50 | L08603306 | 1 CABLE ELECTRIC GREEN-YELLOW L.440MM |
| | 60# | 909 5667 000 | 2 SWITCH COMPLETE |
| | 70 | L08603193 | 3 COVER SWITCH |
| | 75# | 909 5668 000 | 1 SWITCH COMPLETE |
| | 80# | L08603150 | 1 CHOCK |
| | 85 | L08603129 | 2 CHOCK D.13 BLACK |
| | 90 | L08093800 | 1 SCREW 2.9X16 UNI6954 |
| | 95 | L08812021 | 1 RESISTOR 33 OHM COMPLETE |
| | 100 | L08348200 | 1 SCREW 2.9X9.5 UNI6954 |
| | 105# | 909 6831 000 | 1 CABLE POWER SUPPLY KIT |
| | 110 | L08812092 | 1 CABLE GROUND VACUUM MOTOR ON MACHINES PROD.BEFORE NOVEMBER 2004 ONLY - ECO NO.1752 |
| | 115# | L08093600 | 1 SCREW M3X16 UNI7687 |
| | 120# | 33005601 | 1 NUT SELF L. M3 UNI7474 |



110V/60Hz

- CC= CABLE CLAMP
- S1= MAIN SWITCH
- S2= VACUUM MOTOR SWITCH
- S3= PUMP SWITCH
- S4= SOLUTION DOSING SWITCH
- C1= CABLE INTERNAL
- PSC= POWER SUPPLY CORD
- M1= BRUSH MOTOR WITH CIRCUIT BREAKER
- M2= VACUUM MOTOR
- M3= CEME PUMP
- R= RESISTOR
- C1= WORK CAPACITOR
- C2= SUPPRESSION FILTER



- M1 = BRUSH MOTOR WITH CIRCUIT BREAKER
- M2 = VAACUUM MOTOR
- M3 = PUMP
- R = RESISTOR
- C = WORK CAPACITOR



14600 21st Avenue North
Plymouth, MN 55447-3408
www.advance-us.com
Phone: 800-989-2235
Fax: 800-989-6566
©2010 Nilfisk-Advance, Inc.