



 EQUIPMENT

 PARTS

 RENTALS

 SERVICE

 SUPPLIES

# SPARE PARTS CATALOGUE

## CONTACT US

 800.6.Bortek

 717.737.7591

 [Orders@BortekIndustries.com](mailto:Orders@BortekIndustries.com)

 [BortekIndustries.com/CUSTOMERLINK](http://BortekIndustries.com/CUSTOMERLINK)



# HAMMERHEAD<sup>®</sup>

# 870SR

The contained descriptions in the present publication are not binding. The Manufacturer therefore reserves itself the right to bring in whatever moment possible organs changes, details or supplies of accessories, that it holds convenient for an improvement, or for any demand of constructive or commercial character.

The partial reproduction of the texts and diagrammes contained in the present catalog, is forbidden by law.

The Manufacturer reserves itself the right to bring changes of technical character and/or of endowment. The images are meant of pure reference and not binding in terms of design and endowment.

## SYMBOLS USED IN THE MANUAL

### INTRODUCTION

This catalogue is intended to serve as a guide for the ordering of spare parts and is designed to facilitate rapid identification of the machine in all its versions and to rapid location of its component parts.

### HOW TO ORDER

For the purpose of simplifying stock searching and the delivery of spare parts, we would ask our customers to observe the following standard procedures, at all times specifying:

- a) the model and part number of the machine;
- b) the position number and the number of the table of chart in which the parts appear;
- c) ordering code and part name;
- d) quantity of parts required;
- e) precise address and company status of the purchaser placing the order, complete with address for delivery of the goods;
- f) shipping means required.

#### SYMBOLY USED IN THE CATALOGUE

000000000 →

- Code used up to the indicated serial number

000000000 →

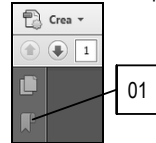
- Code used from the indicated serial number

## RAPID CONSULTATION (ELECTRONIC FORMAT)

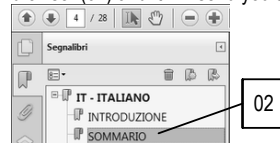
For a rapid consultation of the electronic document, use "Bookmarks" and "Page Links"

### Bookmarks:

Activate the "Bookmarks" panel of the interface browser, clicking on the icon associated with it (01), the icon can vary depending on the version of the Acrobat display.



Display the bookmarks in the desired language, selecting from IT-EN-FR-DE-ES. To display the desired page, just click on the title in the browser (02) and it will send you to the desired destination.



### Page Links:

In the Document Summary, to display the desired page just click on the corresponding page number, and it will send you to the desired destination.





---

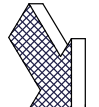
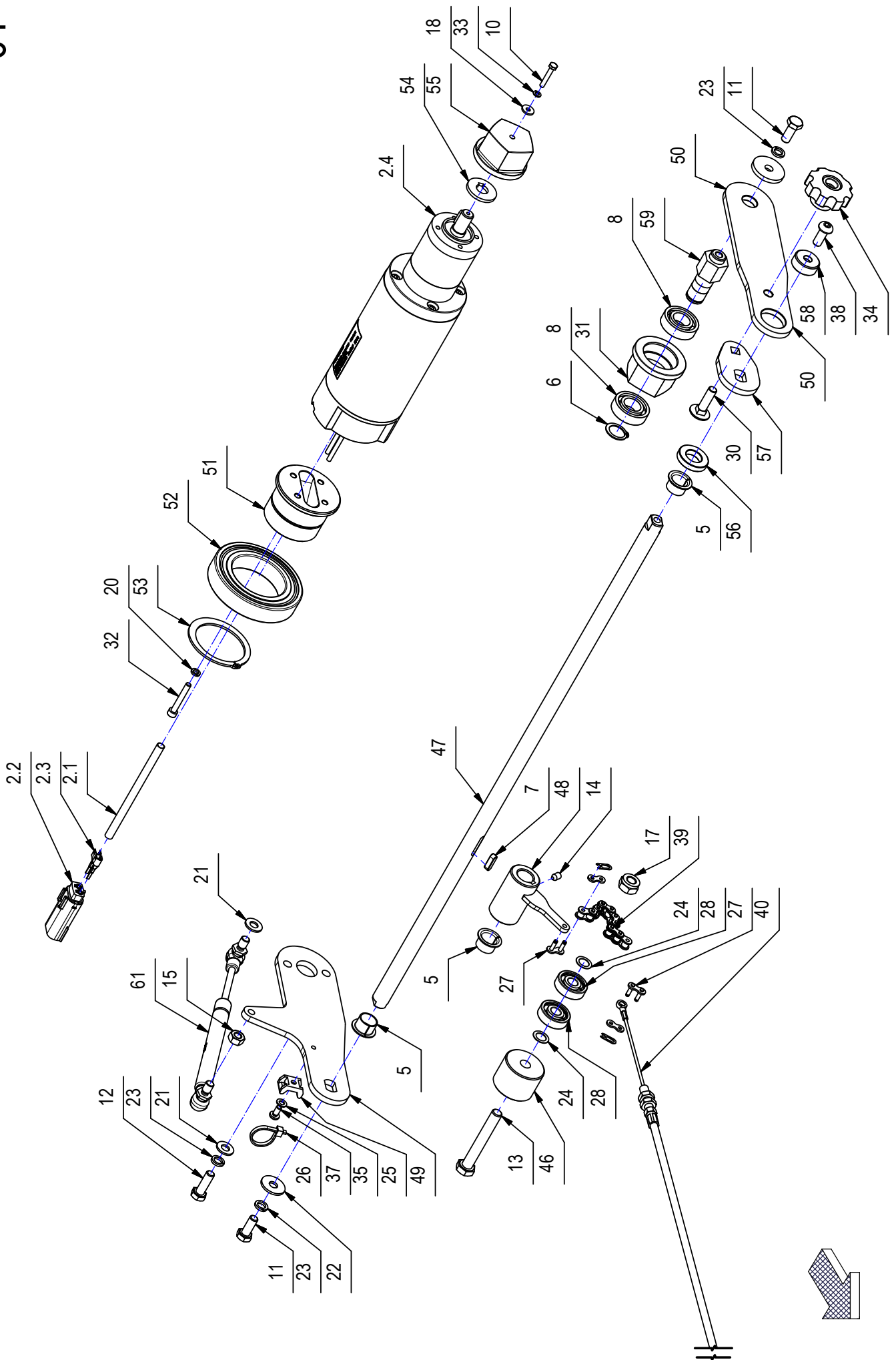
## SUMMARY

<a href="#">PAG.04</a>	CENTRAL BRUSH GROUP
<a href="#">PAG.08</a>	GROUP RIGHT SIDE BRUSH
<a href="#">PAG.10</a>	GROUP LEFT SIDE BRUSH
<a href="#">PAG.12</a>	FRAME GROUP
<a href="#">PAG.14</a>	BRUSH CONTROL UNIT – STEERING ASSEMBLY
<a href="#">PAG.18</a>	HANDLEBAR ASSEMBLY
<a href="#">PAG.20</a>	WHEEL DRIVE UNIT
<a href="#">PAG.22</a>	FRONT WHEEL ASSEMBLY
<a href="#">PAG.24</a>	GROUP CASH COLLECTION OF WASTE
<a href="#">PAG.26</a>	BODY GROUP
<a href="#">PAG.30</a>	GROUP COMMAND FLAP
<a href="#">PAG.32</a>	GROUP PANEL FILTER
<a href="#">PAG.34</a>	GROUP FILTER CLOTH (OPTIONAL)
<a href="#">PAG.36</a>	GROUP SUCTION
<a href="#">PAG.38</a>	ELECTRICAL GROUP
<a href="#">PAG.40</a>	GROUP OPTIONAL CHARGER
<a href="#">PAG.42</a>	OPTIONAL GROUP FLASHING
<a href="#">PAG.44</a>	OPTIONAL ACCESSORIES GROUP

---

# CR-01 GROUP MAIN BRUSH

# 01



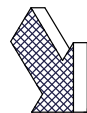
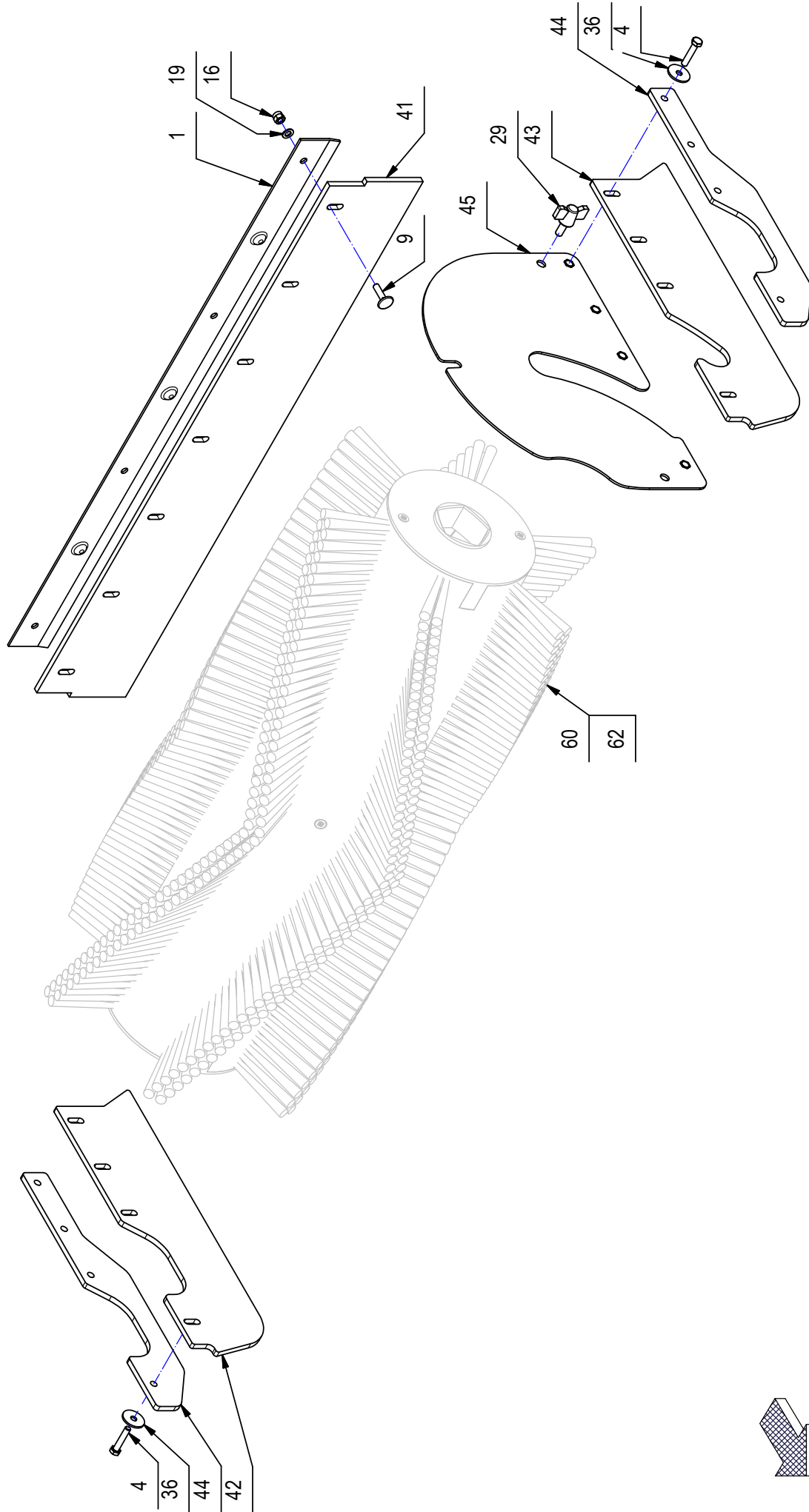
## CR-01 GROUP MAIN BRUSH

01

COMPONENT	CODE	QUANTITY	DENOMINATION	DENOMINATION	COMPONENT	CODE	QUANTITY	DENOMINATION
1	204276	1	BLADE		37	418311	1	SCREW
2	223687	1	GEARED MOTOR + CONNECTOR		38	425828	1	SCREW
2.1	223681	1	SHEATH		39	436263	1	CHAIN
2.2	436411	1	CONNECTOR FEMALE		40	437879	1	CABLE
2.3	436413	2	TERMINALE MOLEX		41	437880	1	REAR RUBBER
2.4	437901	1	GEARED MOTOR		42	437881	1	SIDE RUBBER
3	400167	1	WASHER		43	437882	1	SIDE RUBBER
4	407651	8	SCREW		44	437883	2	BLADE
5	408058	3	BUSHING		45	437884	1	SUPPORT
6	408352	1	SEEGER RING		46	437885	1	SPACER
7	408403	1	KEY		47	437886	1	SHAFT
8	408432	2	BEARING		48	437887	1	SUPPORT
9	408616	4	SCREW		49	437889	1	SUPPORT
10	408635	1	SCREW		50	437890	1	SUPPORT
11	408670	2	SCREW		51	437891	1	SUPPORT
12	408674	2	SCREW		52	437892	1	BEARING
13	408718	1	SCREW		53	437893	1	STOP RING
14	408903	1	DOWEL		54	437894	1	SPACER
15	409046	1	NUT		55	437896	1	COUPLING
16	409080	4	LOCK NUT		56	437897	1	SPACER
17	409090	1	LOCK NUT		57	437898	1	SUPPORT
18	409144	1	WASHER		58	437899	1	BUSHING
19	409150	4	WASHER		59	437900	1	PIN
20	409154	4	WASHER		60	437902	1	CYLINDRICAL BRUSH
21	409175	3	WASHER		61	438131	1	SPRING
22	409179	1	WASHER		62	438621	1	CYLINDRICAL BRUSH
23	409181	4	LOCK WASHER					
24	409235	2	SHIM					
25	409819	1	SUPPORT PLATE					
26	410275	1	CLAMP					
27	411947	2	JOINT CHAIN					
28	411951	2	BEARING					
29	411983	3	WING NUT					
30	412133	1	SCREW					
31	415476	1	COUPLING					
32	415759	4	SCREW					
33	415941	1	LOCK WASHER					
34	416158	1	KNOB					
35	417985	1	WASHER					
36	417989	8	WASHER					

CR-01 GROUP MAIN BRUSH

01

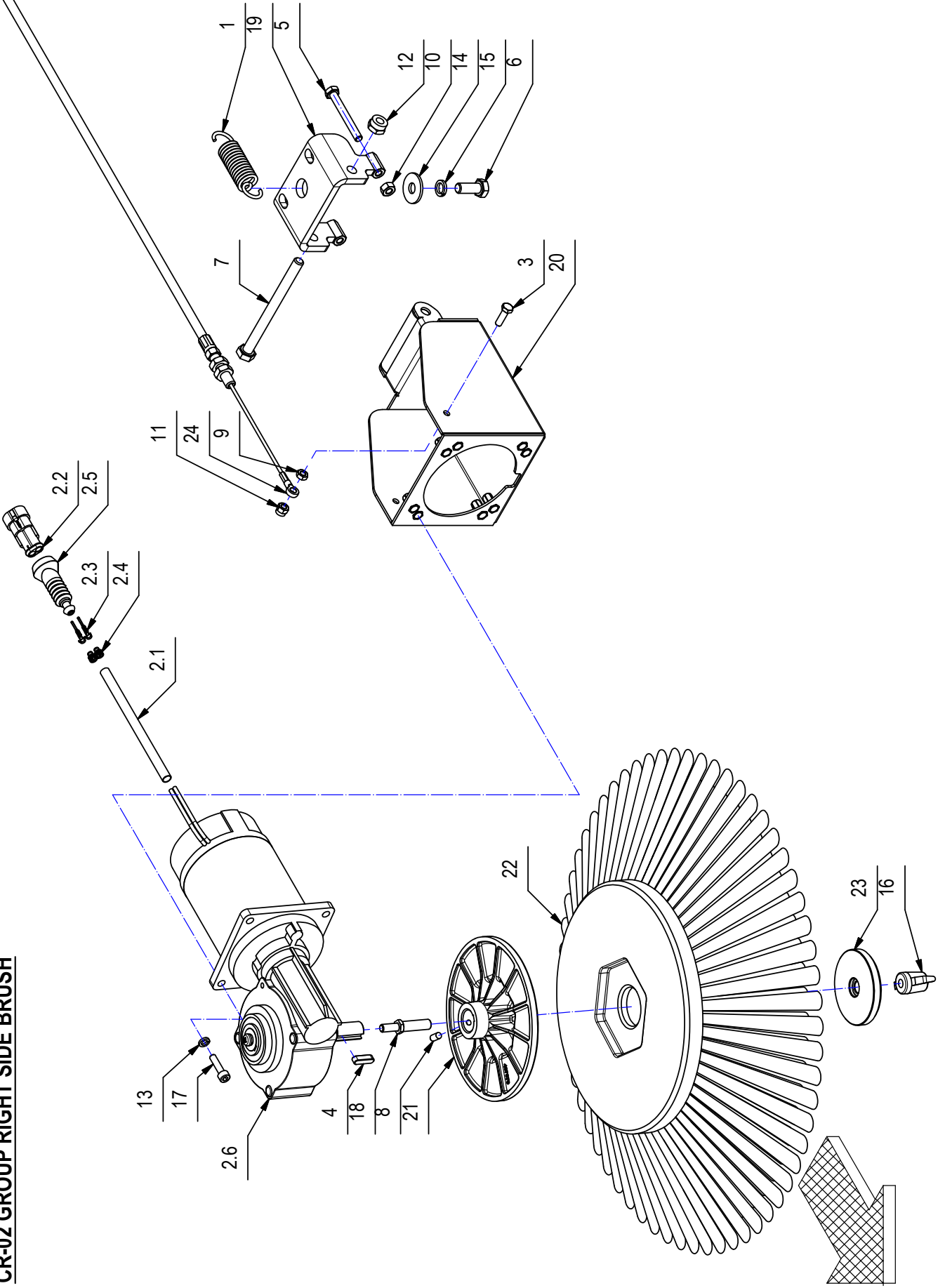


## CR-01 GROUP MAIN BRUSH

01

COMPONENT	CODE	QUANTITY	DENOMINATION	COMPONENT	CODE	QUANTITY	DENOMINATION
1	204276	1	BLADE	37	418311	1	SCREW
2	223687	1	GEARED MOTOR + CONNECTOR	38	425828	1	SCREW
2.1	223681	1	SHEATH	39	436263	1	CHAIN
2.2	436411	1	CONNECTOR FEMALE	40	437879	1	CABLE
2.3	436413	2	TERMINALE MOLEX	41	437880	1	REAR RUBBER
2.4	437901	1	GEARED MOTOR	42	437881	1	SIDE RUBBER
3	400167	1	WASHER	43	437882	1	SIDE RUBBER
4	407651	8	SCREW	44	437883	2	BLADE
5	408058	3	BUSHING	45	437884	1	SUPPORT
6	408352	1	SEEGER RING	46	437885	1	SPACER
7	408403	1	KEY	47	437886	1	SHAFT
8	408432	2	BEARING	48	437887	1	SUPPORT
9	408616	4	SCREW	49	437889	1	SUPPORT
10	408635	1	SCREW	50	437890	1	SUPPORT
11	408670	2	SCREW	51	437891	1	SUPPORT
12	408674	2	SCREW	52	437892	1	BEARING
13	408718	1	SCREW	53	437893	1	STOP RING
14	408903	1	DOWEL	54	437894	1	SPACER
15	409046	1	NUT	55	437896	1	COUPLING
16	409080	4	LOCK NUT	56	437897	1	SPACER
17	409090	1	LOCK NUT	57	437898	1	SUPPORT
18	409144	1	WASHER	58	437899	1	BUSHING
19	409150	4	WASHER	59	437900	1	PIN
20	409154	4	WASHER	60	437902	1	CYLINDRICAL BRUSH
21	409175	3	WASHER	61	438131	1	SPRING
22	409179	1	WASHER	62	438621	1	CYLINDRICAL BRUSH
23	409181	4	LOCK WASHER				
24	409235	2	SHIM				
25	409819	1	SUPPORT PLATE				
26	410275	1	CLAMP				
27	411947	2	JOINT CHAIN				
28	411951	2	BEARING				
29	411983	3	WING NUT				
30	412133	1	SCREW				
31	415476	1	COUPLING				
32	415759	4	SCREW				
33	415941	1	LOCK WASHER				
34	416158	1	KNOB				
35	417985	1	WASHER				
36	417989	8	WASHER				

**CR-02 GROUP RIGHT SIDE BRUSH**



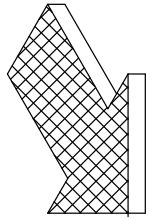
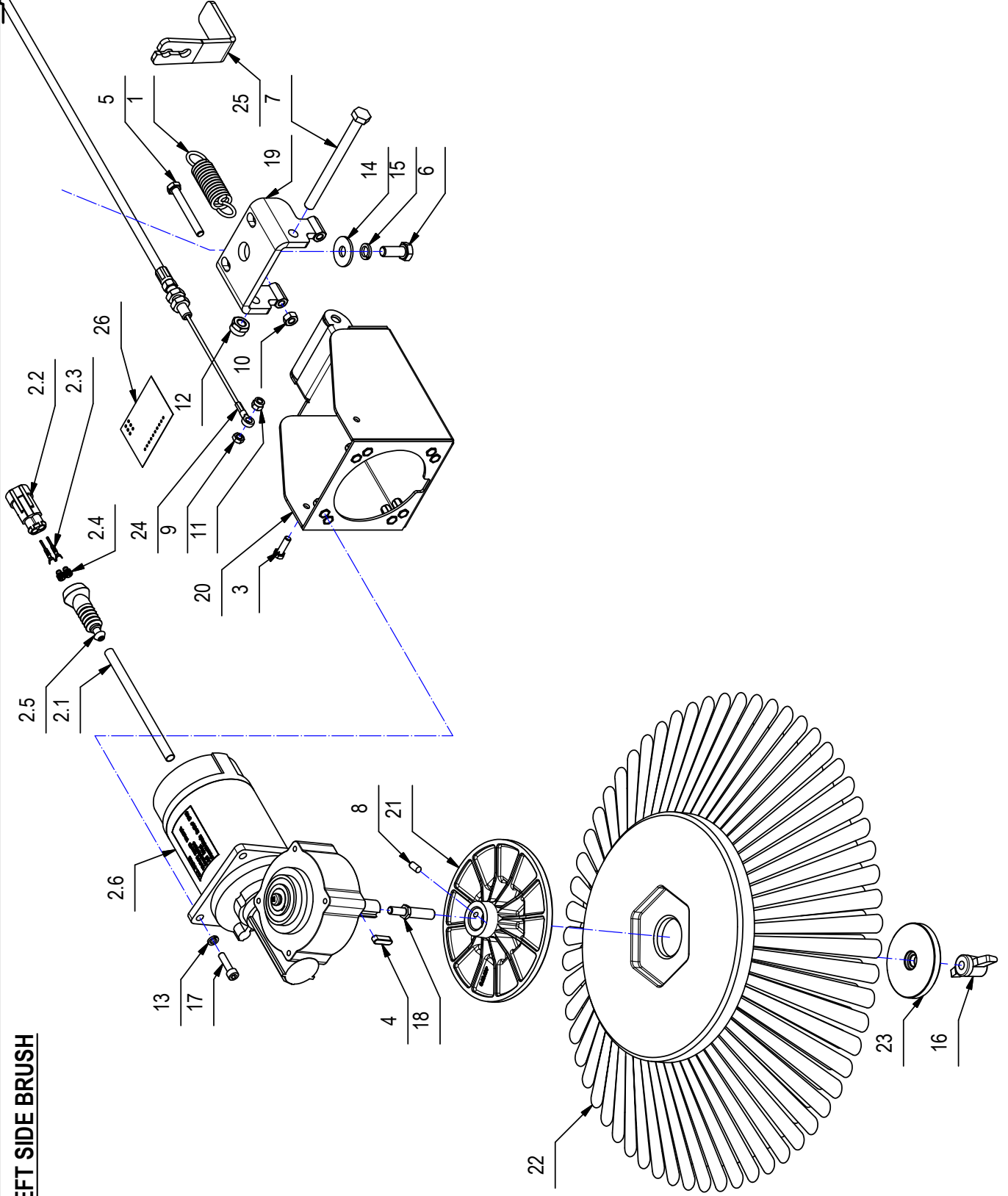


**CR-02 GROUP RIGHT SIDE BRUSH**

02

COMPONENT	CODE	QUANTITY	DENOMINATION
1	202475	1	SPRING
2	223682	1	GEARED MOTOR ASSEMBLY
2.1	223681	1	SHEATH
2.2	436430	1	CONNECTOR FEMALE
2.3	436431	2	
2.4	438589	2	GASKET
2.5	436585	1	BELLOWS
2.6	438443	1	GEARED MOTOR
3	407645	1	SCREW
4	408403	1	KEY
5	408656	1	SCREW
6	408670	1	SCREW
7	408698	1	SCREW
8	408899	1	DOWEL
9	409038	1	LOCK NUT
10	409040	1	NUT
11	409080	1	LOCK NUT
12	409085	1	LOCK NUT
13	409154	4	WASHER
14	409179	1	WASHER
15	409181	1	LOCK WASHER
16	410237	1	WING NUT
17	415757	4	SCREW
18	434225	1	STUD BOLT
19	437871	1	SUPPORT
20	437872	1	SUPPORT
21	437873	1	FLANGE
22	437874	1	SIDE BRUSH
23	437875	1	BUSHING
24	437876	1	CABLE

**CR-02 GROUP LEFT SIDE BRUSH**



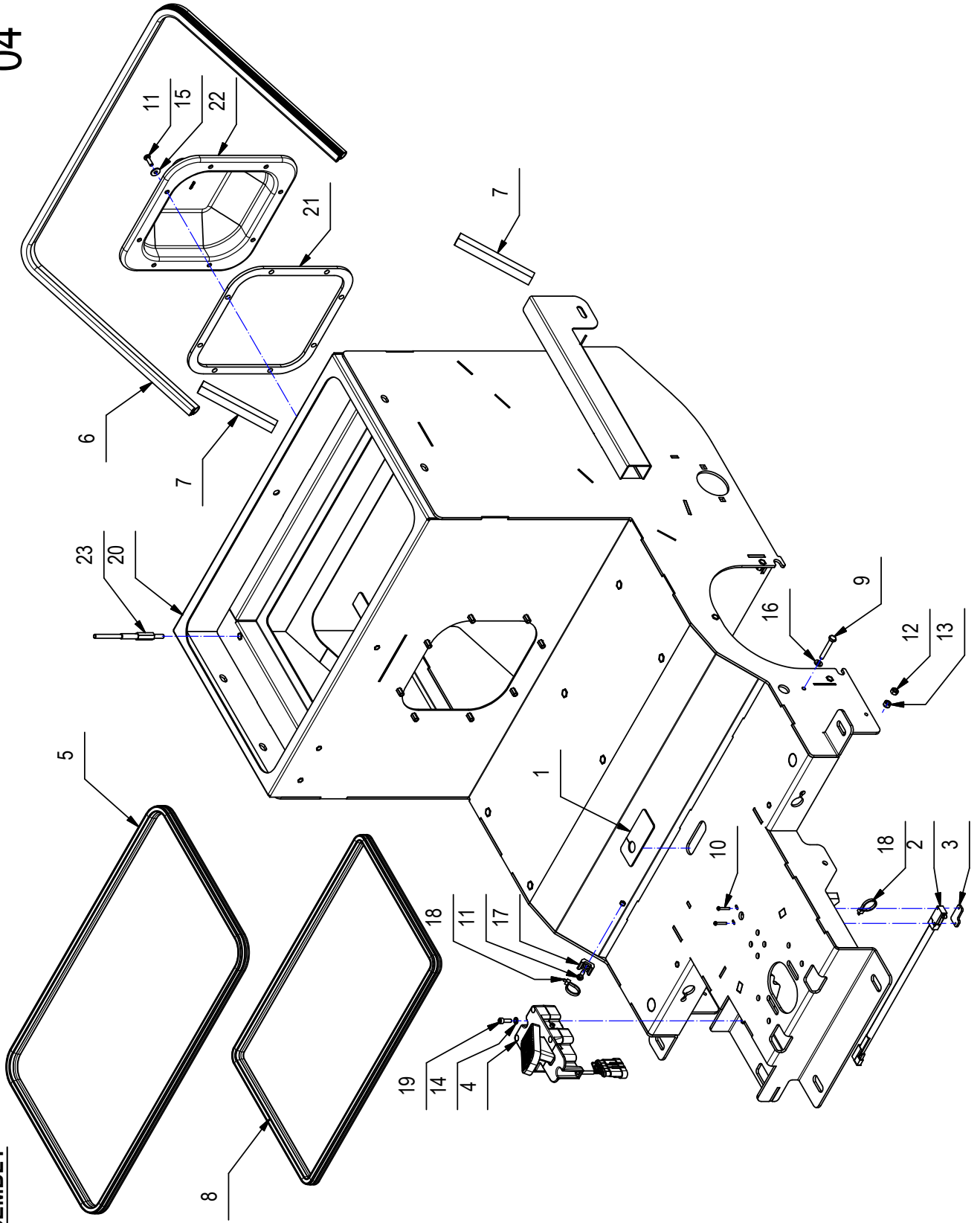
**CR-02 GROUP LEFT SIDE BRUSH**

02

COMPONENT	CODE	QUANTITY	DENOMINATION
1	202475	1	SPRING
2	223682	1	GEARED MOTOR ASSEMBLY
2.1	223681	1	SHEATH
2.2	436430	1	CONNECTOR FEMALE
2.3	436431	2	
2.4	438589	2	GASKET
2.5	436585	1	BELLOWS
2.6	438443	1	GEARED MOTOR
3	407645	1	SCREW
4	408403	1	KEY
5	408656	1	SCREW
6	408670	1	SCREW
7	408698	1	SCREW
8	408899	1	DOWEL
9	409038	1	LOCK NUT
10	409040	1	NUT
11	409080	1	LOCK NUT
12	409085	1	LOCK NUT
13	409154	4	WASHER
14	409179	1	WASHER
15	409181	1	LOCK WASHER
16	410237	1	WING NUT
17	415757	4	SCREW
18	434225	1	STUD BOLT
19	437871	1	SUPPORT
20	437872	1	SUPPORT
21	437873	1	FLANGE
22	437874	1	SIDE BRUSH
23	437875	1	BUSHING
24	437876	1	CABLE
25	437878	1	SUPPORT
26	437945	1	ACTUATORS PCB

**CR-04 BODYWORK ASSEMBLY**

**04**



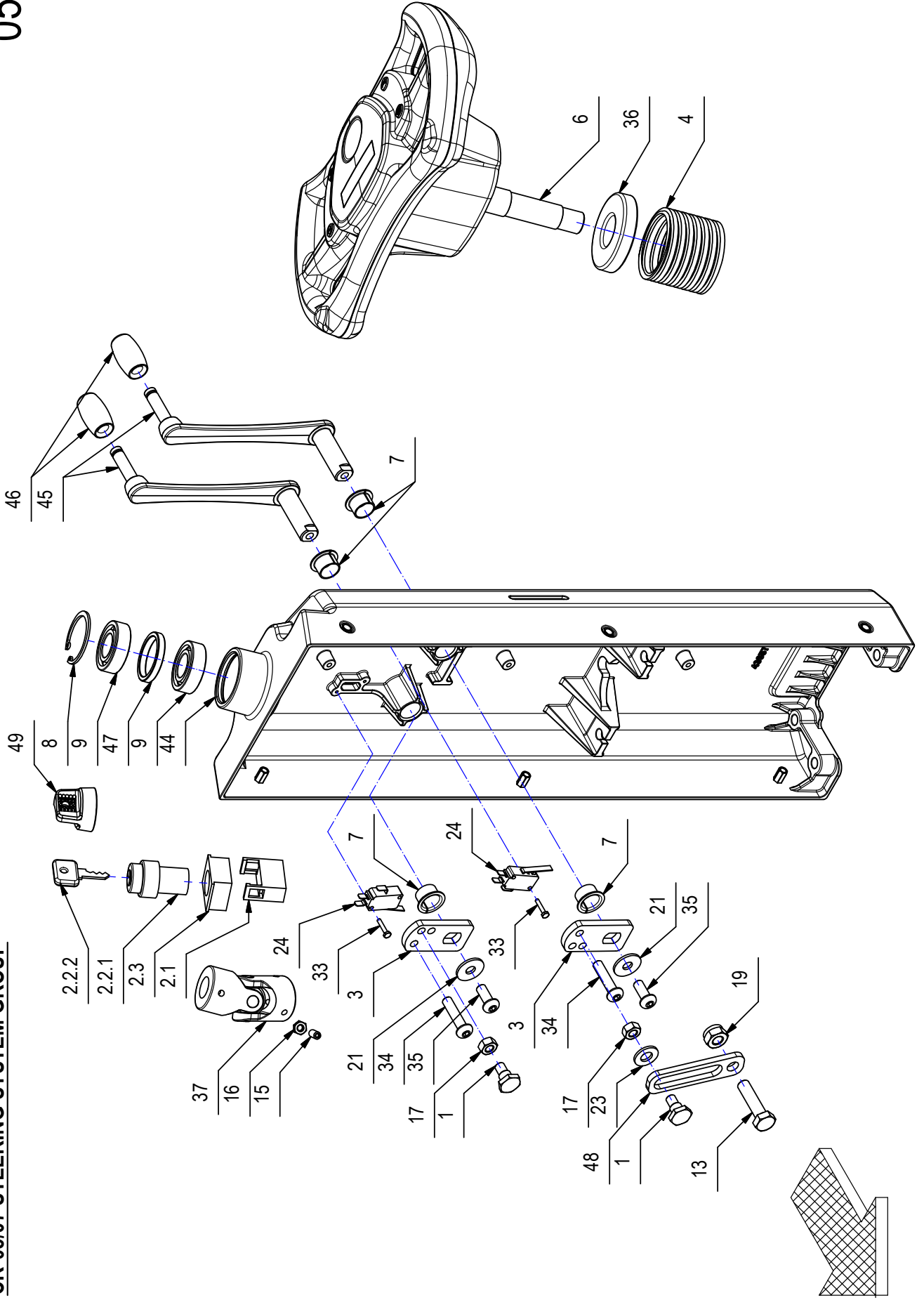
**CR-04 BODYWORK ASSEMBLY**

04

COMPONENT	CODE	QUANTITY	DENOMINATION
1	438862	1	GASKET
2	216691	1	MICROSWITCH
3	219111	1	SUPPORT
4	222367	1	PEDAL
5	223126	1	GASKET
6	223127	1	GASKET
7	223128	2	GASKET
8	223134	1	GASKET
9	408660	2	SCREW
10	408834	2	SCREW
11	408854	11	SCREW
12	409040	2	NUT
13	409082	2	LOCK NUT
14	409150	2	WASHER
15	409151	8	WASHER
16	409156	2	WASHER
17	409819	3	SUPPORT PLATE
18	410275	6	CLAMP
19	415755	2	SCREW
20	437870	1	FRAME
21	437931	1	GASKET
22	437937	1	COVER
23	438912	4	STUD BOLT

**CR-05/07 STEERING SYSTEM GROUP**

**05-07**

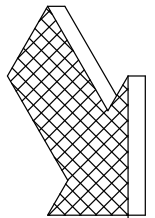
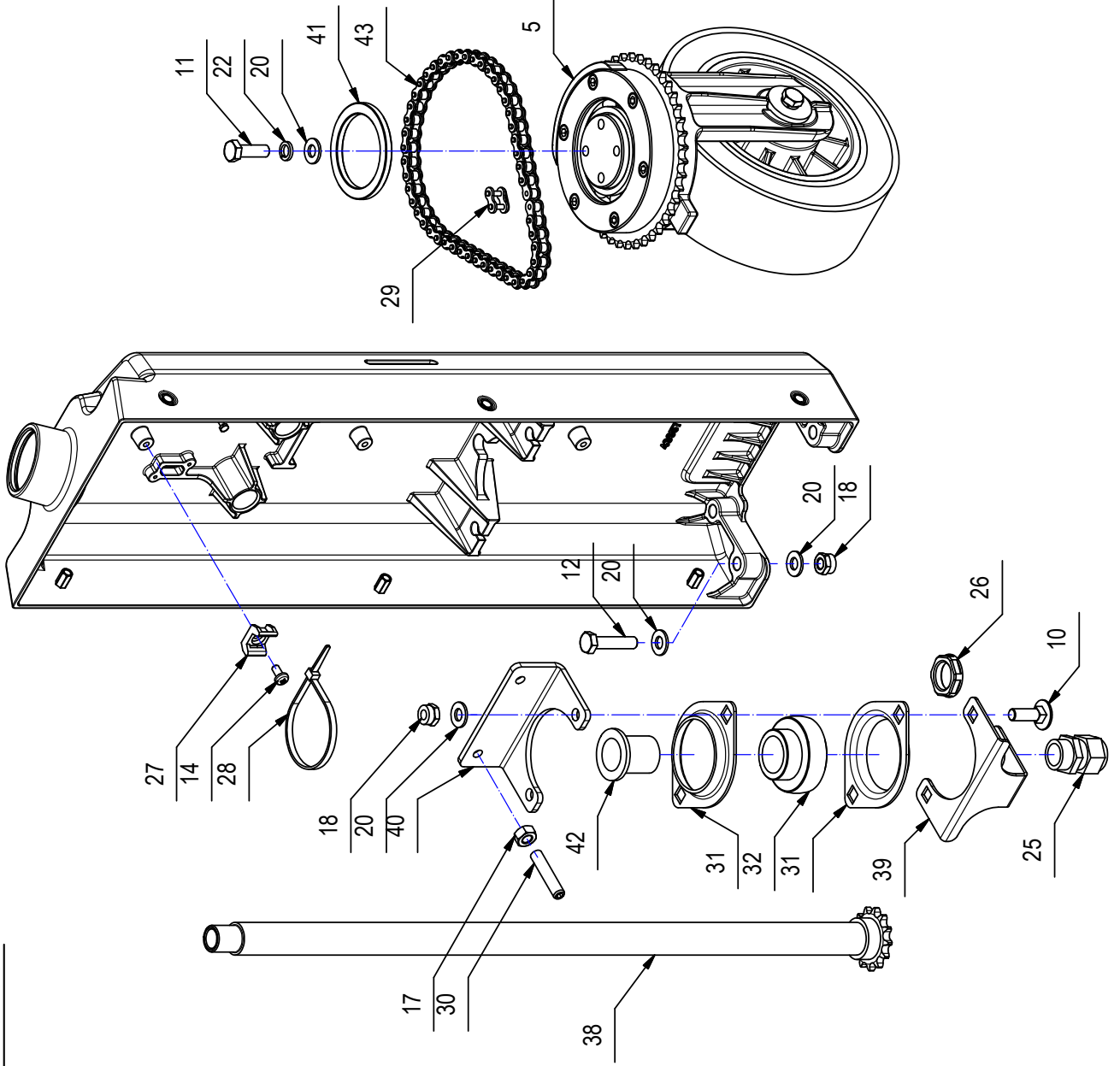


**CR-05/07 STEERING SYSTEM GROUP****05-07**

COMPONENT	CODE	QUANTITY	DENOMINATION	COMPONENT	CODE	QUANTITY	DENOMINATION
1	203269	2	STUD BOLT	34	416779	2	SCREW
2	210516	1	KEY	35	425828	2	SCREW
2.1	409246	1	CONTACT FOR SWITCH	36	429782	1	COLLAR
2.2	409261	1	SWITCH WITH KEY	37	434728	1	UNIVERSAL JOINT
2.2.1	409261	1	SWITCH BODY	38	436215	1	SHAFT
2.2.2	409297	1	KEY	39	436218	1	SUPPORT
2.3	409262	1	FLANGE	40	436219	1	SUPPORT
3	219113	2	LEVER	41	436224	1	SPACER
4	219552	1	BELLOWS	42	436230	1	BUSHING
5	222359	1	FRONT WHEEL	43	436256	1	CHAIN
6	223145	1	STEERING WHEEL	44	436577	1	STEERING COLUMN
7	408058	4	BUSHING	45	436586	2	LEVER
8	408334	1	SEEGER RING	46	436587	2	KNOB
9	408434	2	BEARING	47	436591	1	SPACER
10	408623	2	SCREW	48	437920	1	SUPPORT
11	408674	4	SCREW	49	438299	1	PROTECTION CAP
12	408678	4	SCREW				
13	408715	1	SCREW				
14	408848	3	SCREW				
15	408909	6	DOWEL				
16	409045	6	NUT				
17	409046	4	NUT				
18	409085	6	LOCK NUT				
19	409090	1	LOCK NUT				
20	409175	14	WASHER				
21	409179	2	WASHER				
22	409181	4	LOCK WASHER				
23	409191	1	WASHER				
24	409499	2	MICROSWITCH				
25	409752	1	FAIR-LEAD				
26	409754	1	NUT				
27	409819	3	SUPPORT PLATE				
28	410277	3	CLAMP				
29	411947	1	JOINT CHAIN				
30	411962	2	DOWEL				
31	415660	2	FLANGE				
32	415661	1	BEARING				
33	415709	4	SCREW				

**CR-05/07 STEERING SYSTEM GROUP**

**05-07**



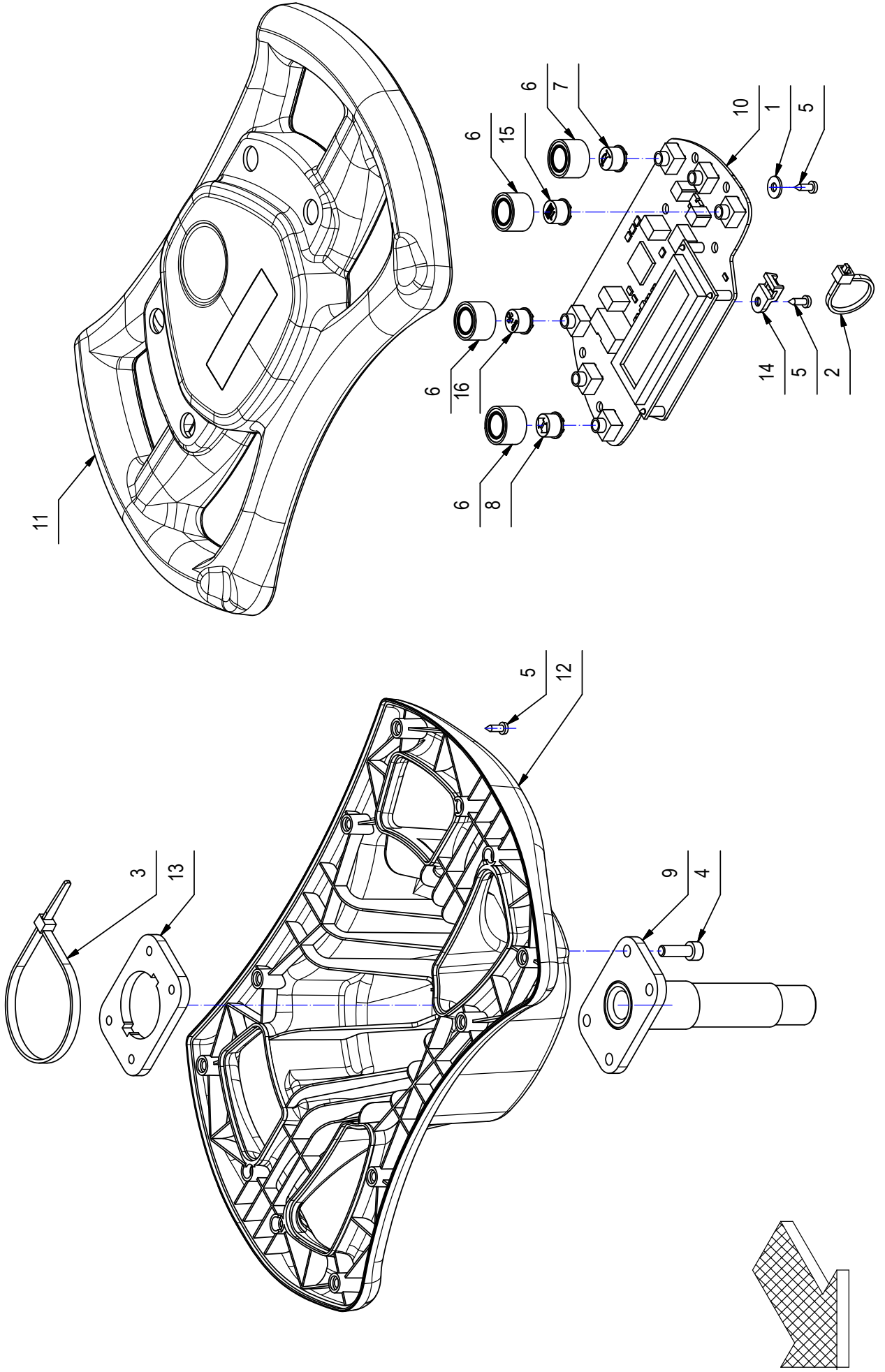


**CR-05/07 STEERING SYSTEM GROUP****05-07**

COMPONENT	CODE	QUANTITY	DENOMINATION	COMPONENT	CODE	QUANTITY	DENOMINATION
1	203269	2	STUD BOLT	34	416779	2	SCREW
2	210516	1	KEY	35	425828	2	SCREW
2.1	409246	1	CONTACT FOR SWITCH	36	429782	1	COLLAR
2.2	409261	1	SWITCH WITH KEY	37	434728	1	UNIVERSAL JOINT
2.2.1	409261	1	SWITCH BODY	38	436215	1	SHAFT
2.2.2	409297	1	KEY	39	436218	1	SUPPORT
2.3	409262	1	FLANGE	40	436219	1	SUPPORT
3	219113	2	LEVER	41	436224	1	SPACER
4	219552	1	BELLOWS	42	436230	1	BUSHING
5	222359	1	FRONT WHEEL	43	436256	1	CHAIN
6	223145	1	STEERING WHEEL	44	436577	1	STEERING COLUMN
7	408058	4	BUSHING	45	436586	2	LEVER
8	408334	1	SEEGER RING	46	436587	2	KNOB
9	408434	2	BEARING	47	436591	1	SPACER
10	408623	2	SCREW	48	437920	1	SUPPORT
11	408674	4	SCREW	49	438299	1	PROTECTION CAP
12	408678	4	SCREW				
13	408715	1	SCREW				
14	408848	3	SCREW				
15	408909	6	DOWEL				
16	409045	6	NUT				
17	409046	4	NUT				
18	409085	6	LOCK NUT				
19	409090	1	LOCK NUT				
20	409175	14	WASHER				
21	409179	2	WASHER				
22	409181	4	LOCK WASHER				
23	409191	1	WASHER				
24	409499	2	MICROSWITCH				
25	409752	1	FAIR-LEAD				
26	409754	1	NUT				
27	409819	3	SUPPORT PLATE				
28	410277	3	CLAMP				
29	411947	1	JOINT CHAIN				
30	411962	2	DOWEL				
31	415660	2	FLANGE				
32	415661	1	BEARING				
33	415709	4	SCREW				

**CR-05 STEERING WHEEL ASSEMBLY**

**05**



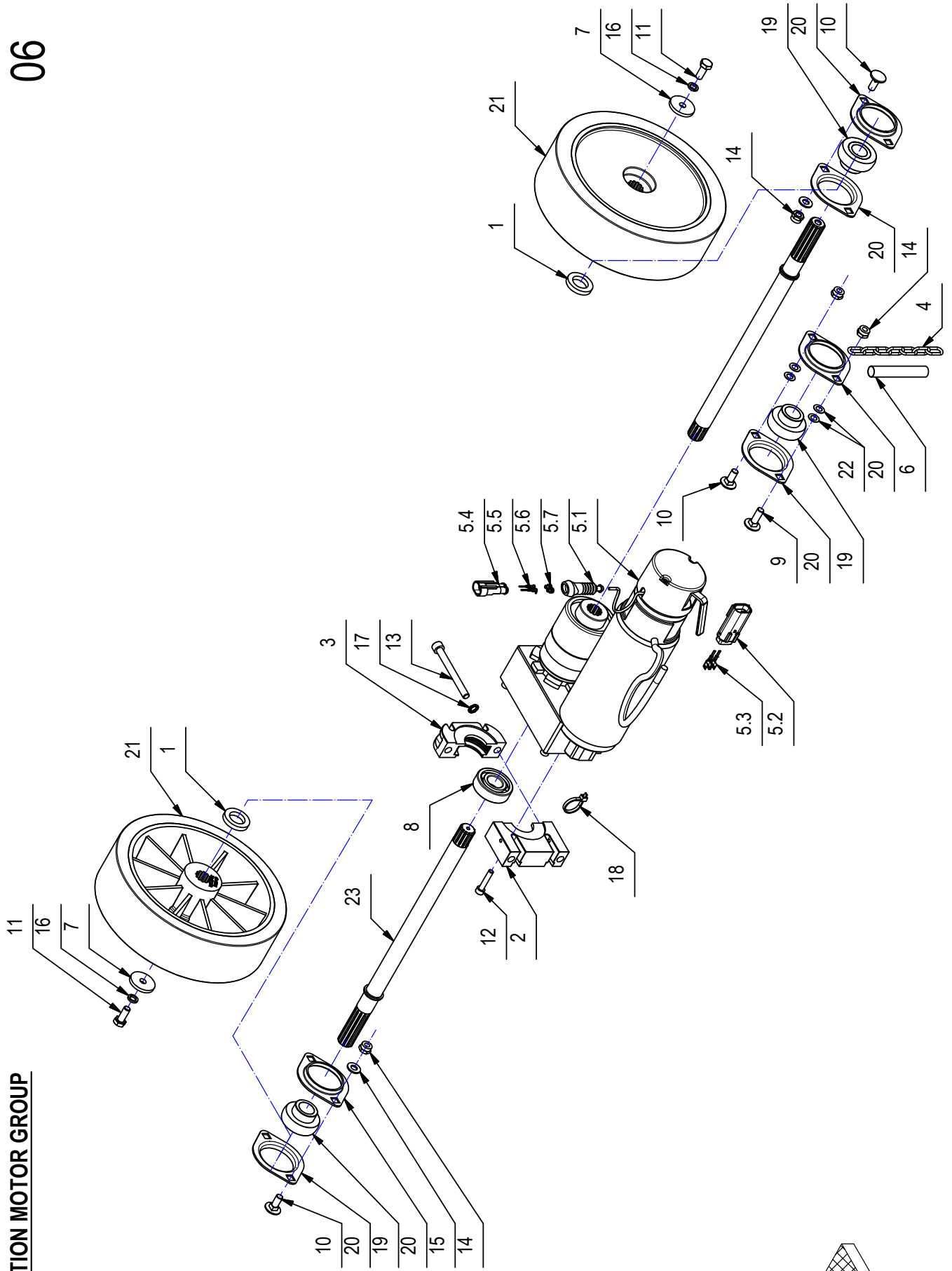
**CR-05 STEERING WHEEL ASSEMBLY**

05

COMPONENT	CODE	QUANTITY	DENOMINATION
1	409147	7	WASHER
2	410274	1	CLAMP
3	410277	1	CLAMP
4	415755	4	SCREW
5	415866	20	SCREW
6	436206	4	GASKET
7	436208	1	CAP
8	436210	1	CAP
9	436216	1	SHAFT
10	436267	1	CHECK CARD CONTROLS
11	436270	1	STEERING WHEEL
12	436271	1	STEERING WHEEL
13	436272	1	PLAQUE
14	436393	1	SUPPORT
15	437921	1	CAP
16	437922	1	CAP

**CR-06 TRACTION MOTOR GROUP**

**06**



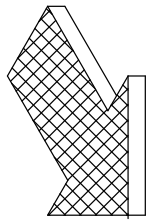
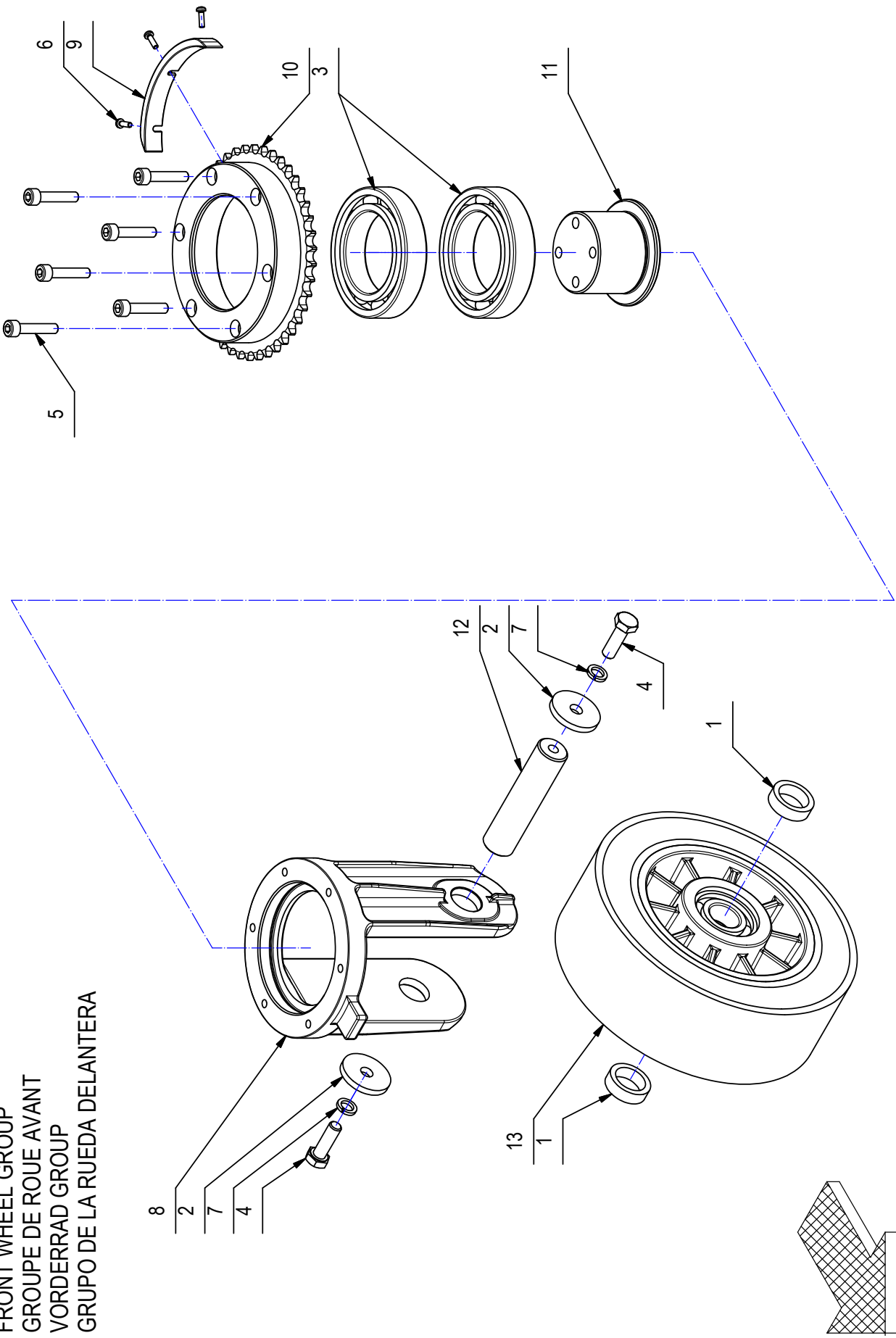
**CR-06 TRACTION MOTOR GROUP****06**

COMPONENT	CODE	QUANTITY	DENOMINATION
1	210119	2	SPACER
2	210488	1	BEARING SUPPORT
3	210489	1	BEARING SUPPORT
4	214741	1	CHAIN
5	222454	1	GEARED MOTOR
5.1	436262	1	GEARED MOTOR
5.2	436411	1	CONNECTOR FEMALE
5.3	436413	2	
5.4	436430	1	CONNECTOR FEMALE
5.5	436431	2	
5.6	436433	2	GASKET
5.7	436585	1	BELLOWS
6	223680	1	SHEATH
7	400167	2	WASHER
8	408435	1	BEARING
9	408623	1	SCREW
10	408626	5	SCREW
11	408670	2	SCREW
12	408798	4	SCREW
13	408822	2	SCREW
14	409085	6	LOCK NUT
15	409175	4	WASHER
16	409181	2	LOCK WASHER
17	409341	2	WASHER
18	410275	1	CLAMP
19	415662	3	BEARING
20	415663	6	FLANGE
21	426460	2	WHEEL
22	426965	4	SHIM
23	437903	2	AXLE SHAFT

**CR-07 FRONT WHEEL GROUP**

FRONT WHEEL GROUP  
GROUPE DE ROUE AVANT  
VORERRAD GROUP  
GRUPO DE LA RUEDA DELANTERA

07



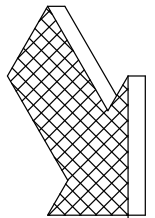
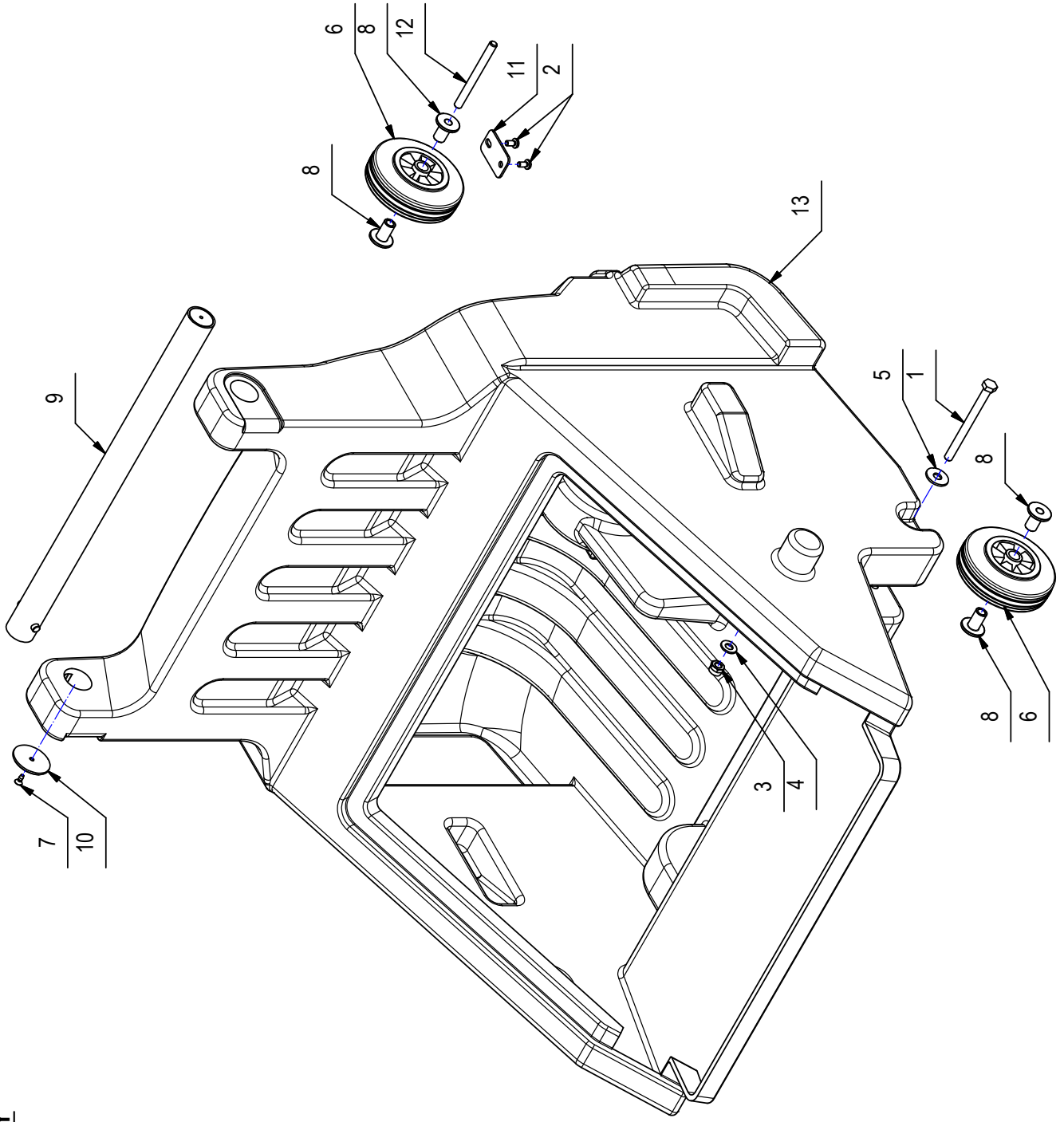
**CR-07 FRONT WHEEL GROUP**

07

COMPONENT	CODE	QUANTITY	DENOMINATION
1	210071	2	SPACER
2	400167	2	WASHER
3	408450	2	BEARING
4	408675	2	SCREW
5	408798	6	SCREW
6	408838	3	SCREW
7	409187	2	WASHER
8	436128	1	SUPPORT WHEELS
9	436141	1	CAM
10	436142	1	BEARING SUPPORT
11	436220	1	SUPPORT WHEELS
12	436221	1	SHAFT
13	436222	1	WHEEL

**CR-08 HOPPER ASSEMBLY**

08





**CR-08 HOPPER ASSEMBLY**

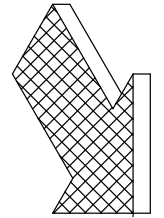
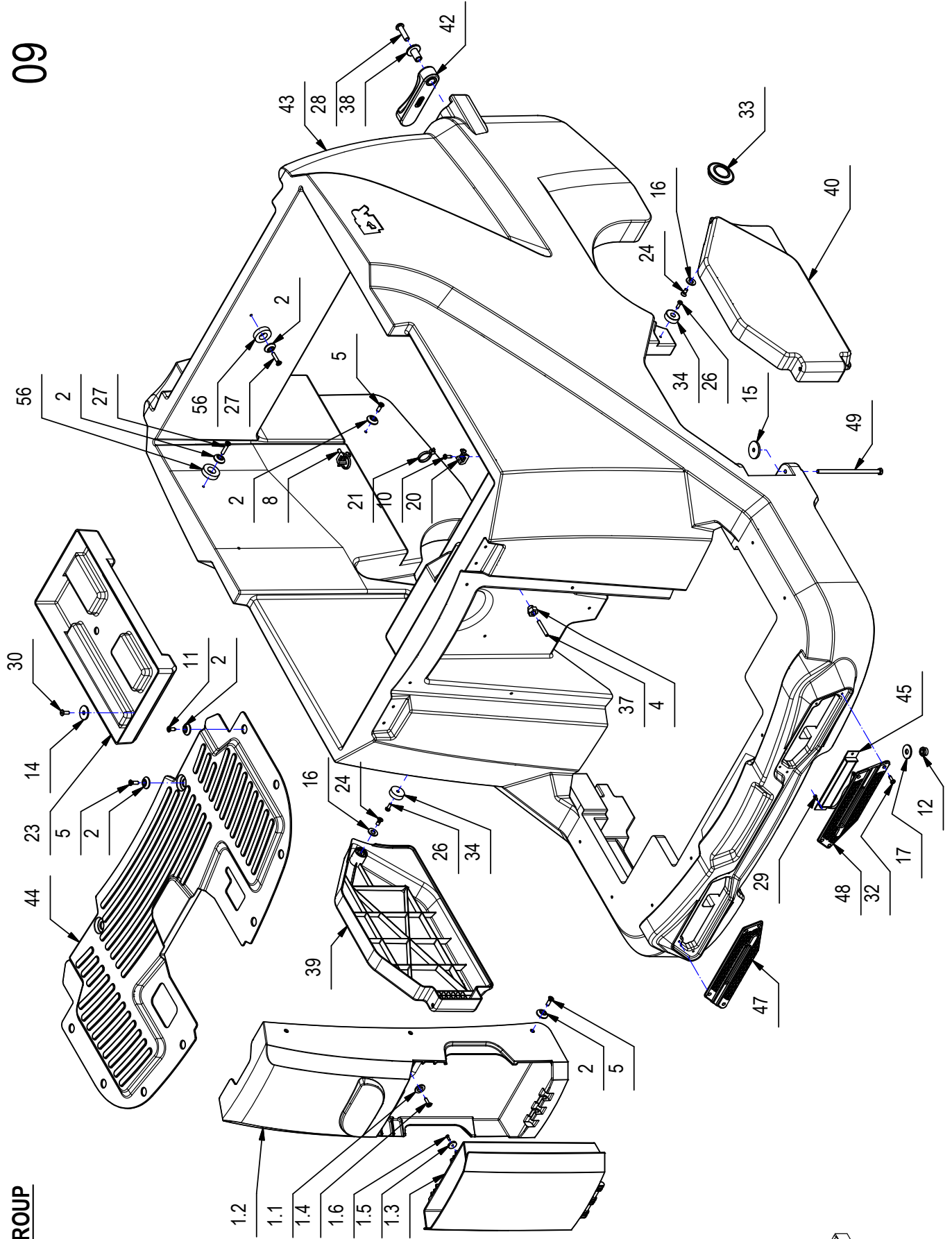
08

COMPONENT	CODE	QUANTITY	DENOMINATION
1	408698	2	SCREW
2	408848	4	SCREW
3	409087	2	LOCK NUT
4	409177	2	WASHER
5	409185	2	WASHER
6	414313	3	WHEEL
7	415747	2	SCREW
8	437904	6	BUSHING
9	438099	1	HANDLE
10	438103	2	SPECIAL WASHER
11	438449	2	SUPPORT
12	438468	1	PIN
13	439441	1	HOPPER

**CR-09 BODY GROUP**

Pag. 26/48

**09**

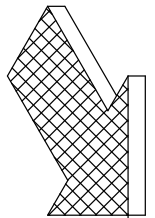
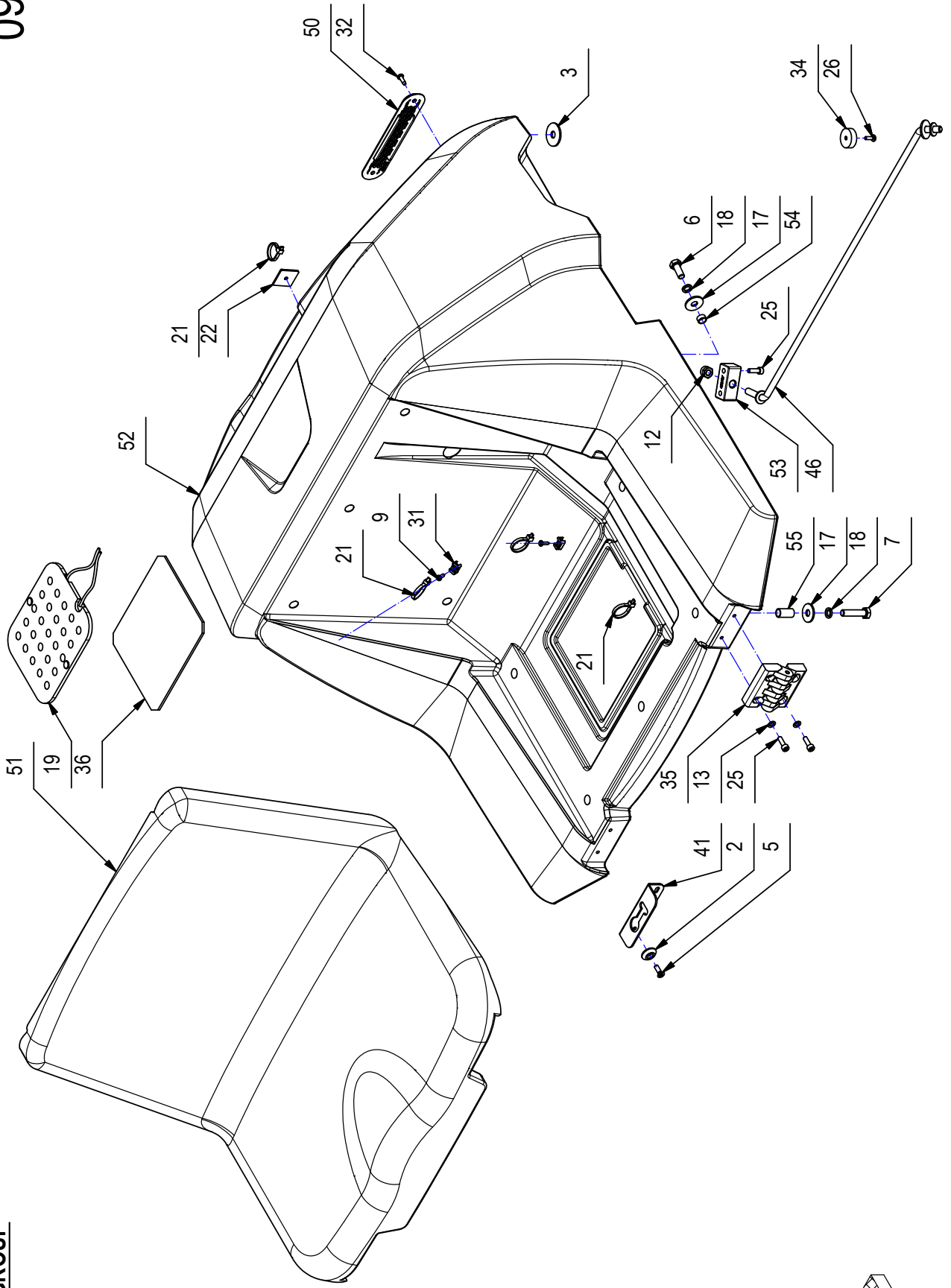


**CR-09 BODY GROUP****09**

COMPONENT	CODE	QUANTITY	DENOMINATION	COMPONENT	CODE	QUANTITY	DENOMINATION
1	222366	1	INSTRUMENT BOARD ASSEMBLY	29	415866	4	SCREW
1.1	204947	2	WASHER	30	415953	4	RIVET
1.2	436137	1	STEERING COLUMN COVER	31	416073	2	SUPPORT PLATE
1.3	436145	1	STEERING COLUMN BOX	32	418275	14	SCREW
1.4	425622	2	SCREW	33	422390	2	COVER
1.5	430184	2	MAGNET	34	427113	3	MAGNET
1.6	408922	2	SCREW	35	434159	2	HINGE
2	400250	25	SPECIAL WASHER	36	434201	1	RUBBER
3	405904	2	GASKET	37	436362	3	DOWEL
4	408024	3	BUSHING	38	437904	2	BUSHING
5	408516	12	SCREW	39	438415	1	COVER RIGHT
6	408670	5	SCREW	40	438416	1	COVER LEFT
7	408678	5	SCREW	41	438420	1	SUPPORT
8	408854	1	SCREW	42	438423	2	HANDLE
9	408869	2	SCREW	43	439440	1	LOWER BODY
10	408877	2	SCREW	44	438425	1	BOTTOM PLATE
11	408890	8	SCREW	45	438427	2	HEAD LED LIGHT
12	409085	5	LOCK NUT	46	438428	1	ROD
13	409150	8	WASHER	47	438434	1	SUPPORT
14	409162	4	WASHER	48	438435	1	SUPPORT
15	409166	2	WASHER	49	438451	2	SCREW
16	409175	2	WASHER	50	438452	3	AIR GRILLE
17	409179	14	WASHER	51	438465	1	SEAT
18	409181	10	LOCK WASHER	52	439422	1	COVER
19	409503	1	MICROSWITCH	53	438467	1	SUPPORT
20	409819	3	SUPPORT PLATE	54	438830	5	SPACER
21	410275	7	CLAMP	55	438831	5	SPACER
22	410327	1	SUPPORT PLATE	56	438930	5	SPACER
23	415248	2	BATTERY BASE				
24	415750	2	SCREW				
25	415755	10	SCREW				
26	415778	3	SCREW				
27	415802	5	SCREW				
28	415860	2	SCREW				

**CR-09 BODY GROUP**

**09**

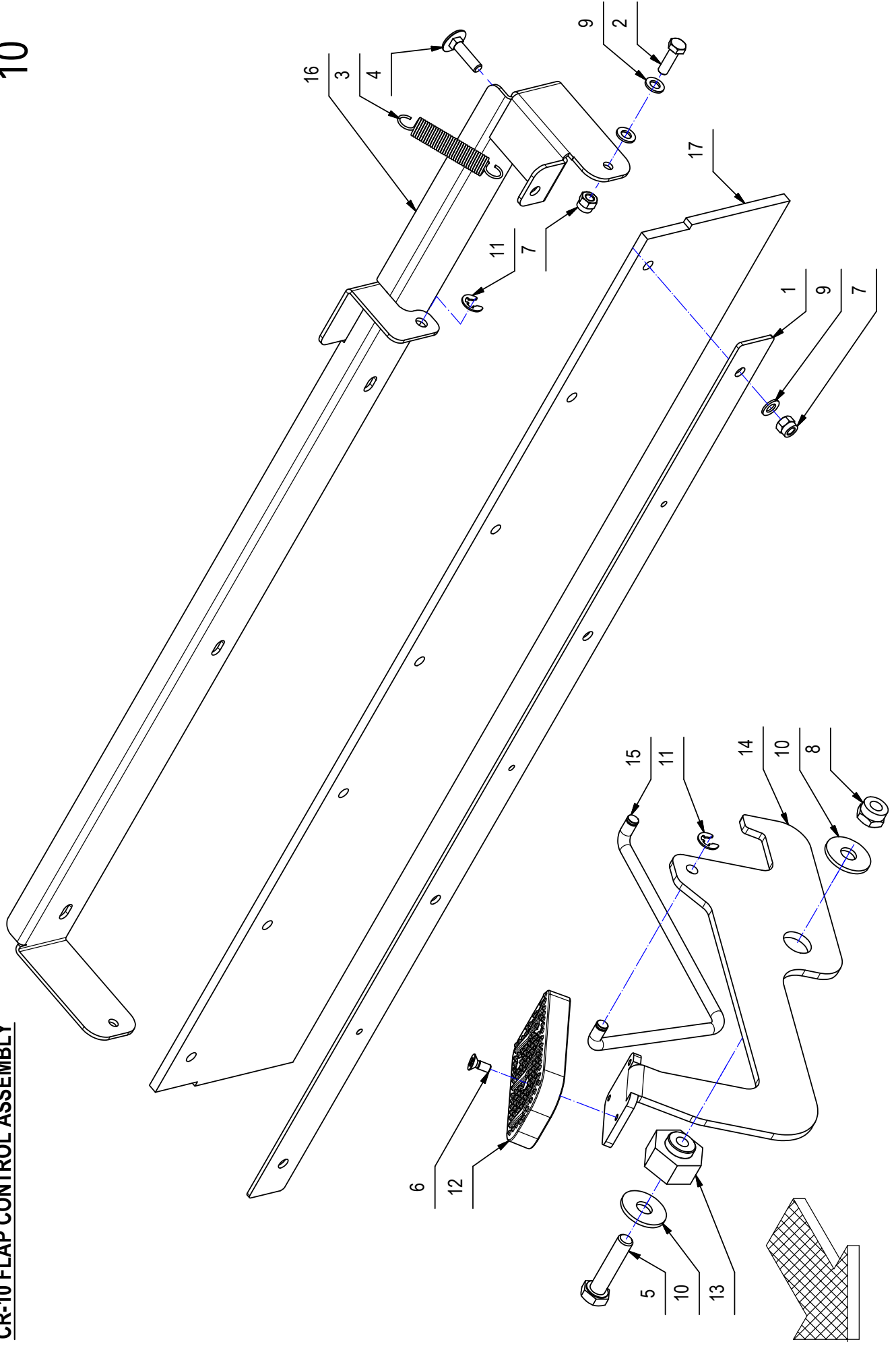


**CR-09 BODY GROUP****09**

COMPONENT	CODE	QUANTITY	DENOMINATION	COMPONENT	CODE	QUANTITY	DENOMINATION
1	222366	1	INSTRUMENT BOARD ASSEMBLY	29	415866	4	SCREW
1.1	204947	2	WASHER	30	415953	4	RIVET
1.2	436137	1	STEERING COLUMN COVER	31	416073	2	SUPPORT PLATE
1.3	436145	1	STEERING COLUMN BOX	32	418275	14	SCREW
1.4	425622	2	SCREW	33	422390	2	COVER
1.5	430184	2	MAGNET	34	427113	3	MAGNET
1.6	408922	2	SCREW	35	434159	2	HINGE
2	400250	25	SPECIAL WASHER	36	434201	1	RUBBER
3	405904	2	GASKET	37	436362	3	DOWEL
4	408024	3	BUSHING	38	437904	2	BUSHING
5	408516	12	SCREW	39	438415	1	COVER RIGHT
6	408670	5	SCREW	40	438416	1	COVER LEFT
7	408678	5	SCREW	41	438420	1	SUPPORT
8	408854	1	SCREW	42	438423	2	HANDLE
9	408869	2	SCREW	43	439440	1	LOWER BODY
10	408877	2	SCREW	44	438425	1	BOTTOM PLATE
11	408890	8	SCREW	45	438427	2	HEAD LED LIGHT
12	409085	5	LOCK NUT	46	438428	1	ROD
13	409150	8	WASHER	47	438434	1	SUPPORT
14	409162	4	WASHER	48	438435	1	SUPPORT
15	409166	2	WASHER	49	438451	2	SCREW
16	409175	2	WASHER	50	438452	3	AIR GRILLE
17	409179	14	WASHER	51	438465	1	SEAT
18	409181	10	LOCK WASHER	52	439422	1	COVER
19	409503	1	MICROSWITCH	53	438467	1	SUPPORT
20	409819	3	SUPPORT PLATE	54	438830	5	SPACER
21	410275	7	CLAMP	55	438831	5	SPACER
22	410327	1	SUPPORT PLATE	56	438930	5	SPACER
23	415248	2	BATTERY BASE				
24	415750	2	SCREW				
25	415755	10	SCREW				
26	415778	3	SCREW				
27	415802	5	SCREW				
28	415860	2	SCREW				

**CR-10 FLAP CONTROL ASSEMBLY**

**10**

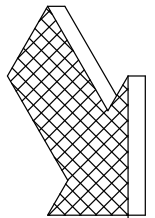
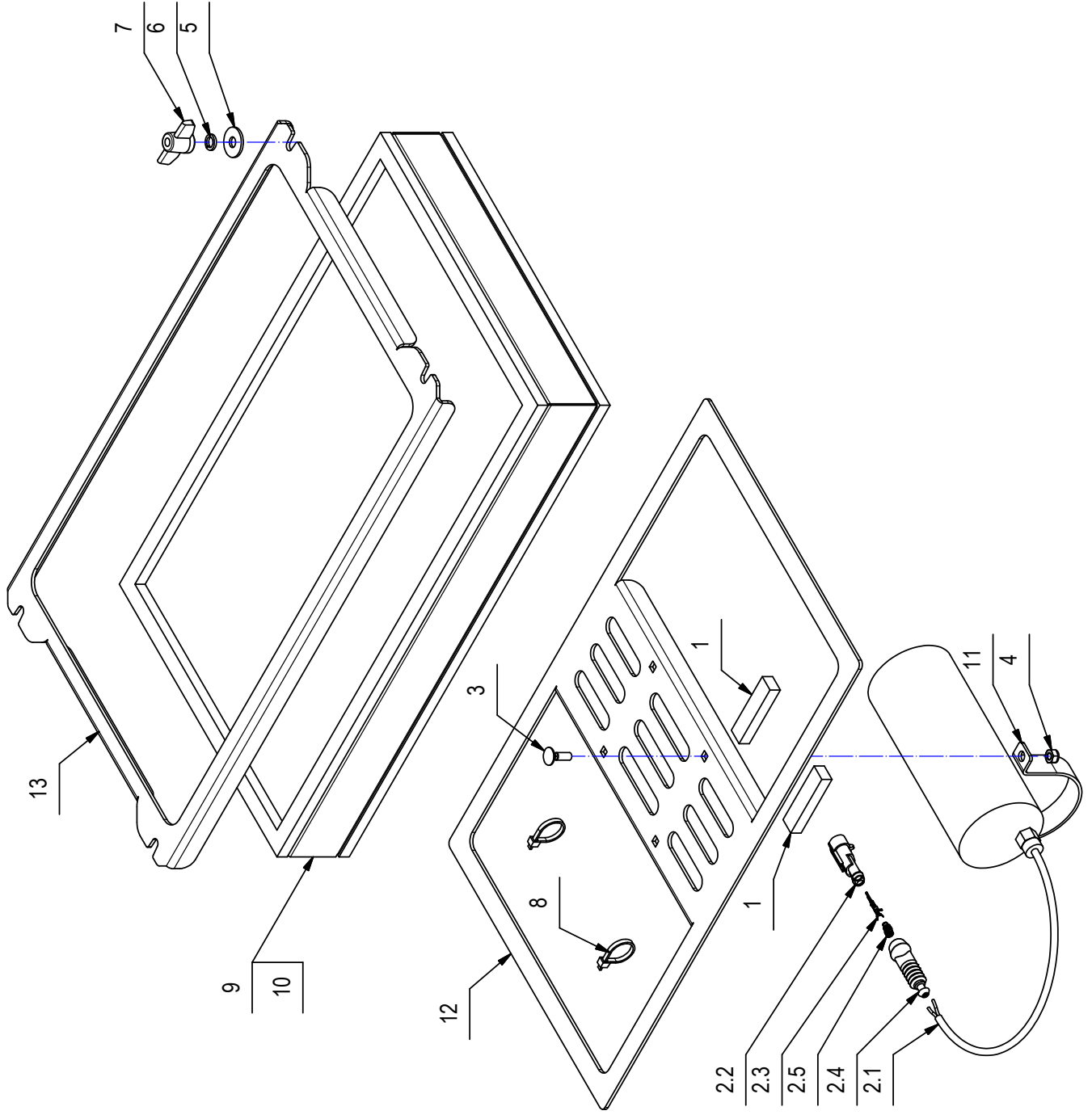


**CR-10 FLAP CONTROL ASSEMBLY****10**

COMPONENT	CODE	QUANTITY	DENOMINATION
1	204275	1	BLADE
2	407645	2	SCREW
3	408113	1	SPRING
4	408616	4	SCREW
5	408678	1	SCREW
6	408928	3	SCREW
7	409080	6	LOCK NUT
8	409085	1	LOCK NUT
9	409150	8	WASHER
10	409179	2	WASHER
11	415637	2	STOP RING
12	436882	1	PEDAL
13	437906	1	BUSHING
14	437907	1	PEDAL
15	437908	1	ROD
16	437910	1	SUPPORT
17	438293	1	FLAP FRONT RUBBER

**CR-11 FILTER PANEL ASSEMBLY**

**11**

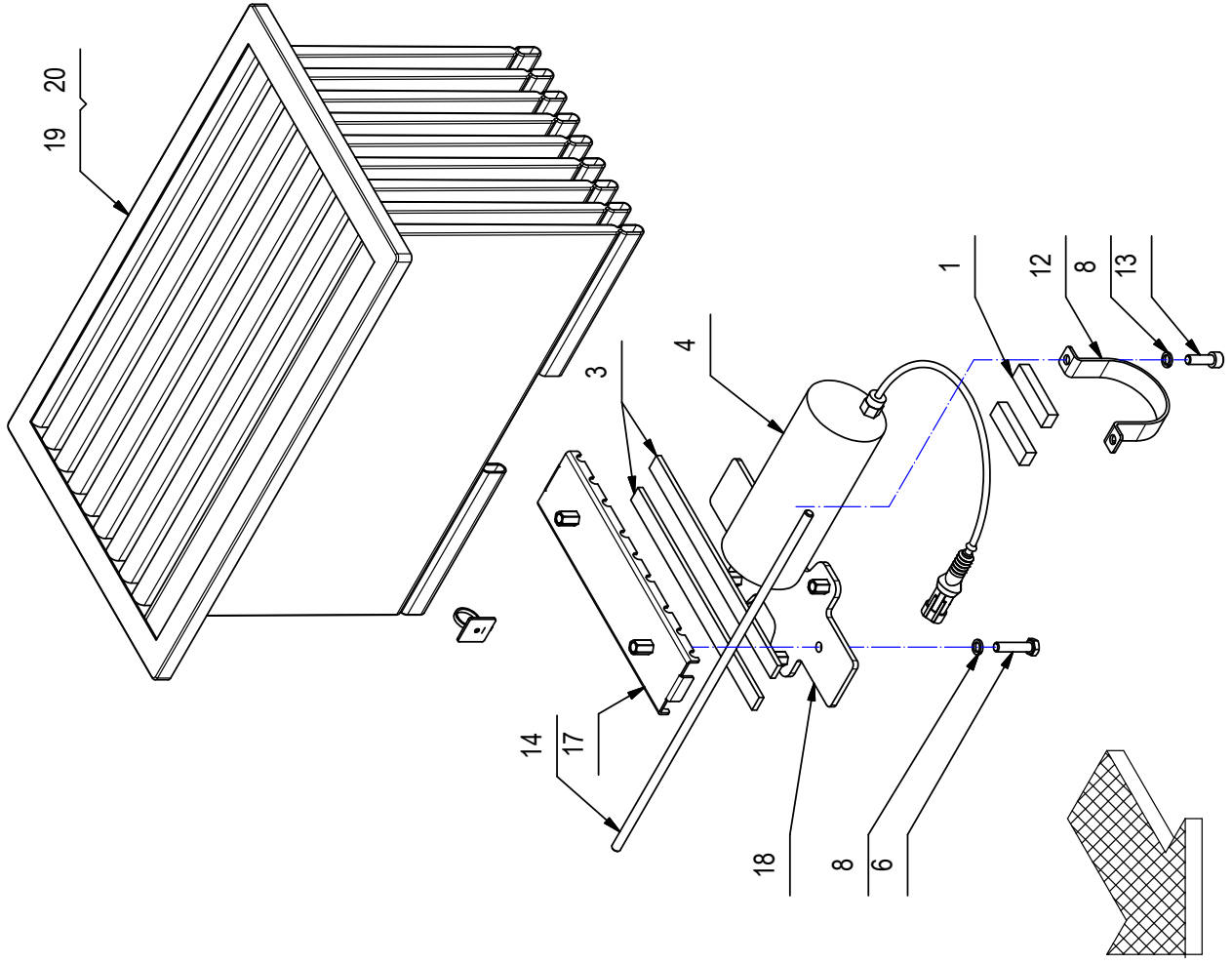
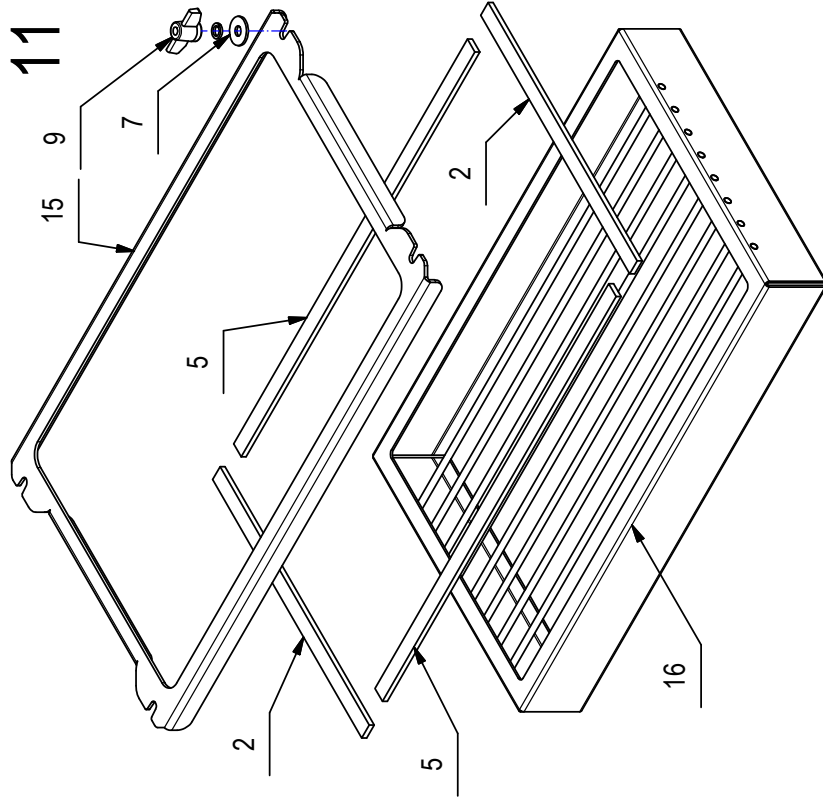




**CR-11 FILTER PANEL ASSEMBLY****11**

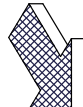
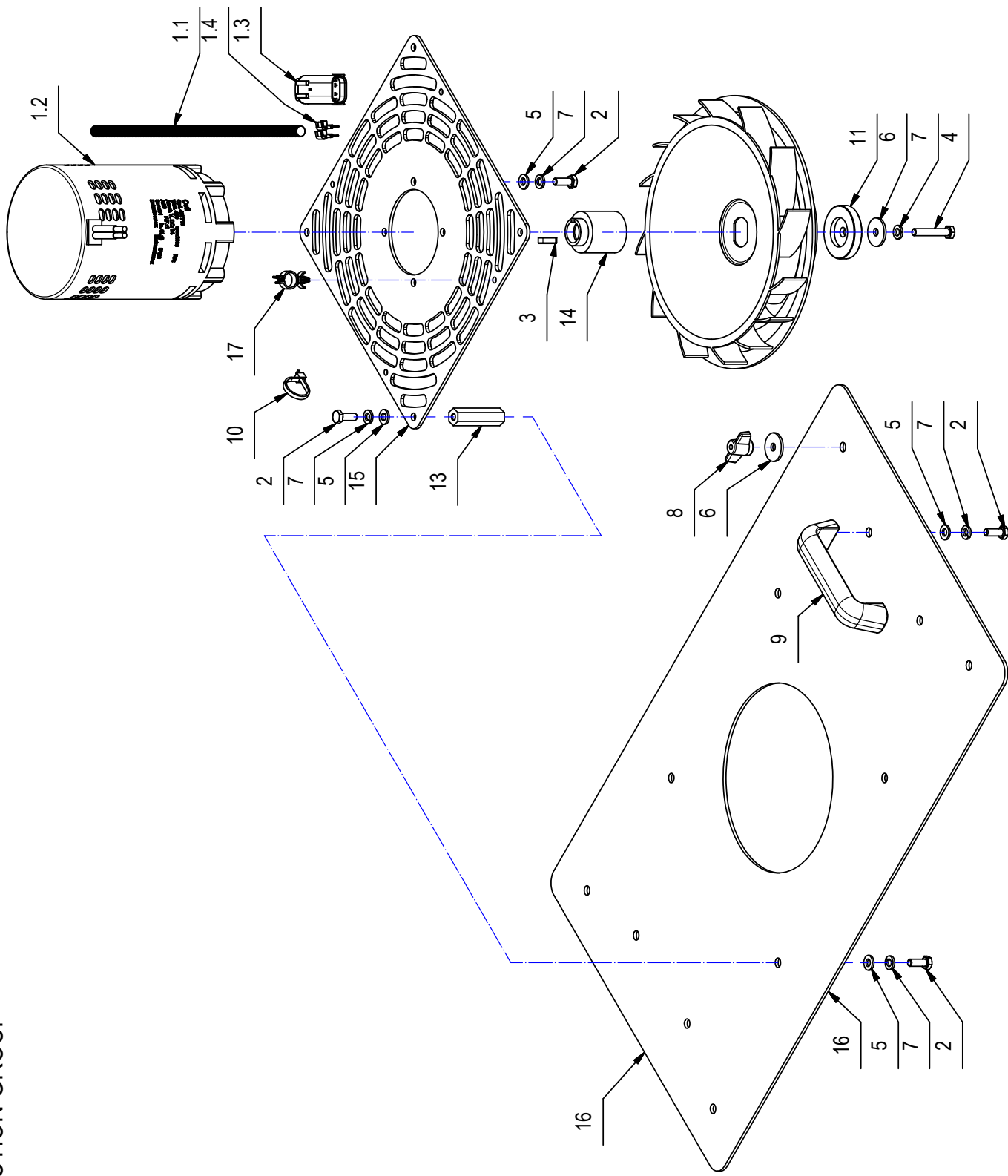
COMPONENT	CODE	QUANTITY	DENOMINATION
1	202090	2	GASKET
2	223686	1	FILTERSHAKER + CONNECTOR
2.1	414596	1	FILTERSHAKER
2.2	436430	1	CONNECTOR FEMALE
2.3	436431	2	
2.4	436585	1	BELLOWS
2.5	438589	2	GASKET
3	408620	4	SCREW
4	409082	4	LOCK NUT
5	409179	4	WASHER
6	409181	4	LOCK WASHER
7	410237	4	WING NUT
8	410275	2	CLAMP
9	411675	1	FILTER AIR
10	411676	1	FILTER AIR
11	415502	2	MOTOR SUPPORT
12	437911	1	SUPPORT
13	437912	1	SUPPORT

**CR-11 FILTER FABRIC (OPTIONAL)**



**CR-11 FILTER FABRIC (OPTIONAL)****11**

COMPONENT	CODE	QUANTITY	DENOMINATION
1	202090	2	GASKET
2	219295	2	GASKET
3	221357	2	JOINT
4	223686	1	FILTERSHAKER + CONNECTOR
5	224007	2	JOINT
6	408678	2	SCREW
7	409179	4	WASHER
8	409181	10	LOCK WASHER
9	410237	4	WING NUT
10	410275	1	CLAMP
11	410327	1	SUPPORT PLATE
12	415502	2	MOTOR SUPPORT
13	418298	4	SCREW
14	430867	9	PIN
15	437912	1	SUPPORT
16	437913	1	SUPPORT
17	437914	1	SUPPORT
18	437915	1	SUPPORT
19	437916	1	FILTER FABRIC
20	438515	1	SHIM

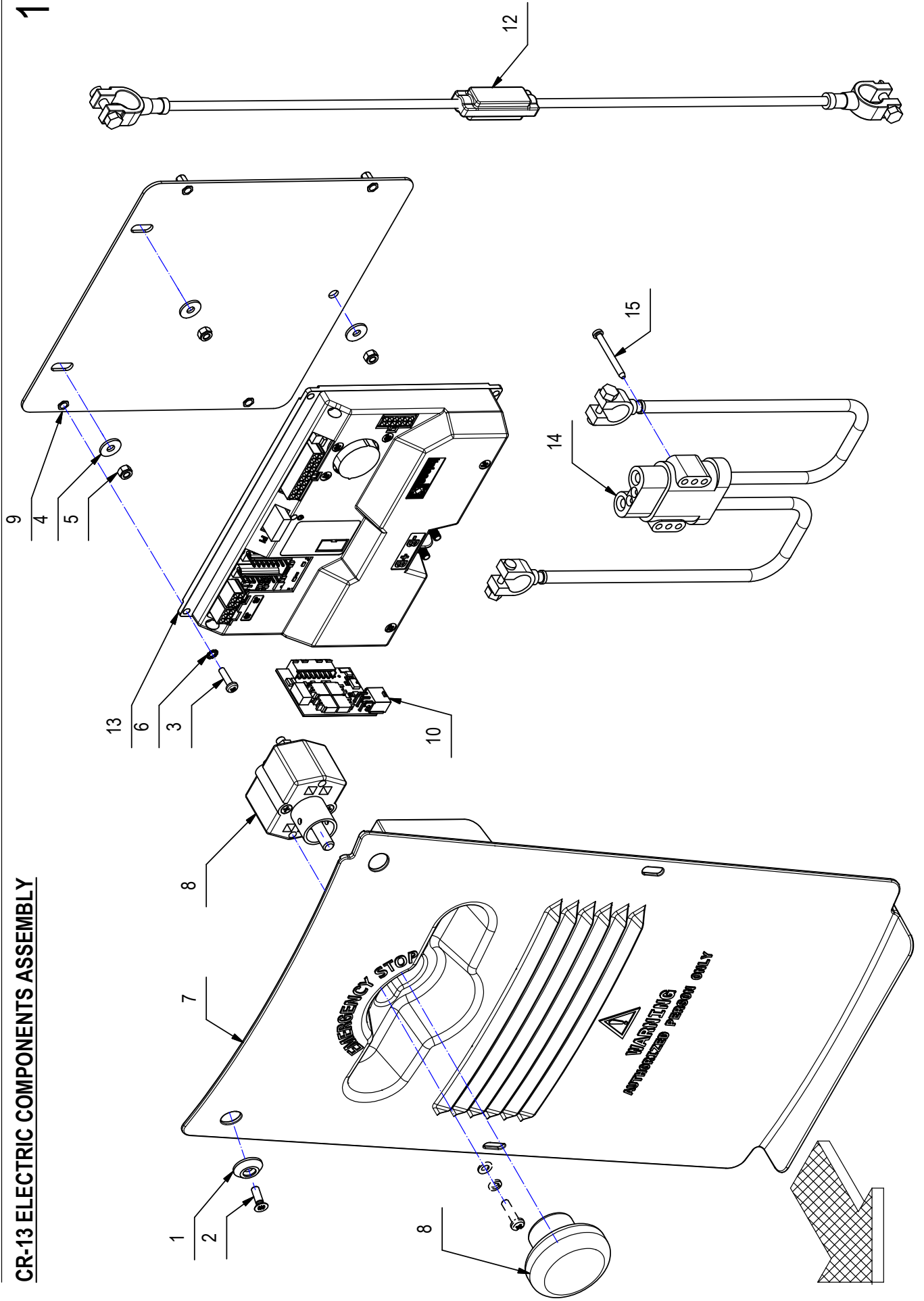


## CR-12 SUCTION GROUP

COMPONENT	CODE	QUANTITY	DENOMINATION
1	223685	1	MOTOR + CONNECTOR
1.1	223684	1	PIPE
1.2	407716	1	MOTOR
1.3	436411	1	CONNECTOR FEMALE
1.4	436413	2	CONNECTOR
2	407663	16	SCREW
3	408403	1	KEY
4	408651	1	SCREW
5	409156	16	WASHER
6	409162	5	WASHER
7	409164	17	LOCK WASHER
8	410232	4	WING NUT
9	410271	2	HANDLE
10	410275	1	CLAMP
11	411835	1	SPECIAL WASHER
12	416388	1	FAN
13	416448	4	STUD BOLT
14	437917	1	FAN HUB
15	437918	1	PLAQUE
16	437919	1	PLAQUE
17	438920	1	CLIP MOUNTING

**CR-13 ELECTRIC COMPONENTS ASSEMBLY**

**13**

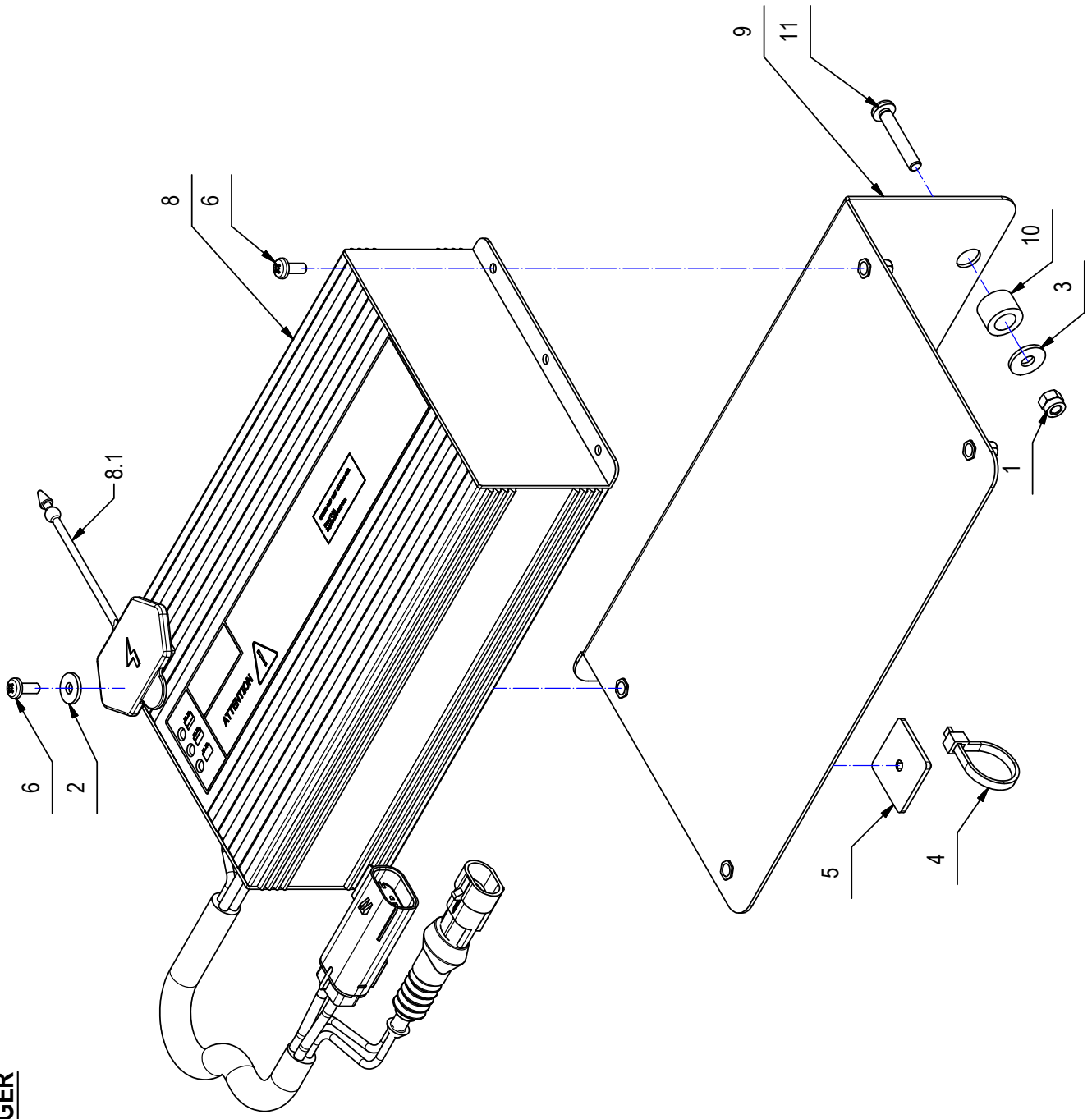


**CR-13 ELECTRIC COMPONENTS ASSEMBLY****13**

COMPONENT	CODE	QUANTITY	DENOMINATION
1	400250	4	SPECIAL WASHER
2	408516	4	SCREW
3	408846	4	SCREW
4	409151	3	WASHER
5	416781	3	LOCK NUT
6	417982	4	WASHER
7	436136	1	COVER
8	436144	1	EMERGENCY STOP
9	436205	1	SUPPORT
10	437945	1	ACTUATORS PCB
11	438324	1	CABLE ASSEMBLY
12	438471	1	CABLE
13	438767	1	CONTROL CARD
14	438820	1	CABLE
15	438932	4	SCREW

**CR-17 GROUP OPTIONAL CHARGER**

17





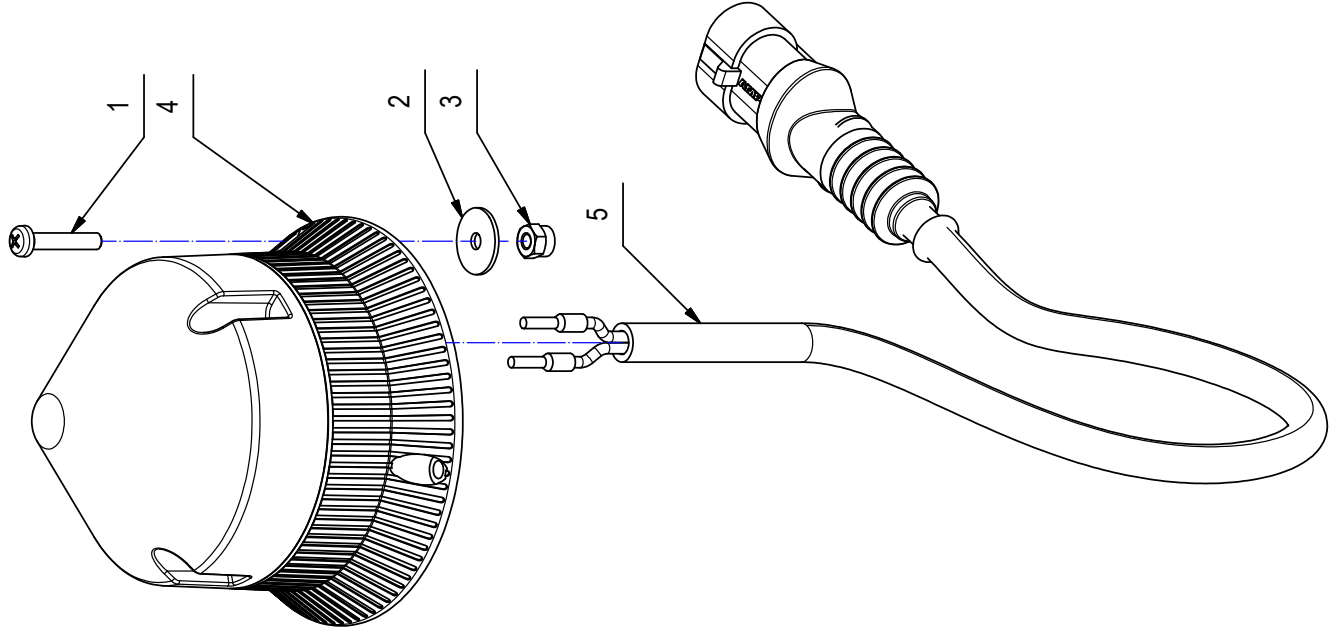
**CR-17 GROUP OPTIONAL CHARGER**

17

COMPONENT	CODE	QUANTITY	DENOMINATION
1	409080	4	LOCK NUT
2	409144	2	WASHER
3	409151	4	WASHER
4	410275	2	CLAMP
5	410327	2	SUPPORT PLATE
6	416785	4	SCREW
8	436434	1	BATTERY CHARGERS
8.1	422693	1	COVER
9	438460	1	SUPPORT
10	438461	4	SPACER
11	408852	4	SCREW

**CR-18 OPTIONAL GROUP FLASHING**

18

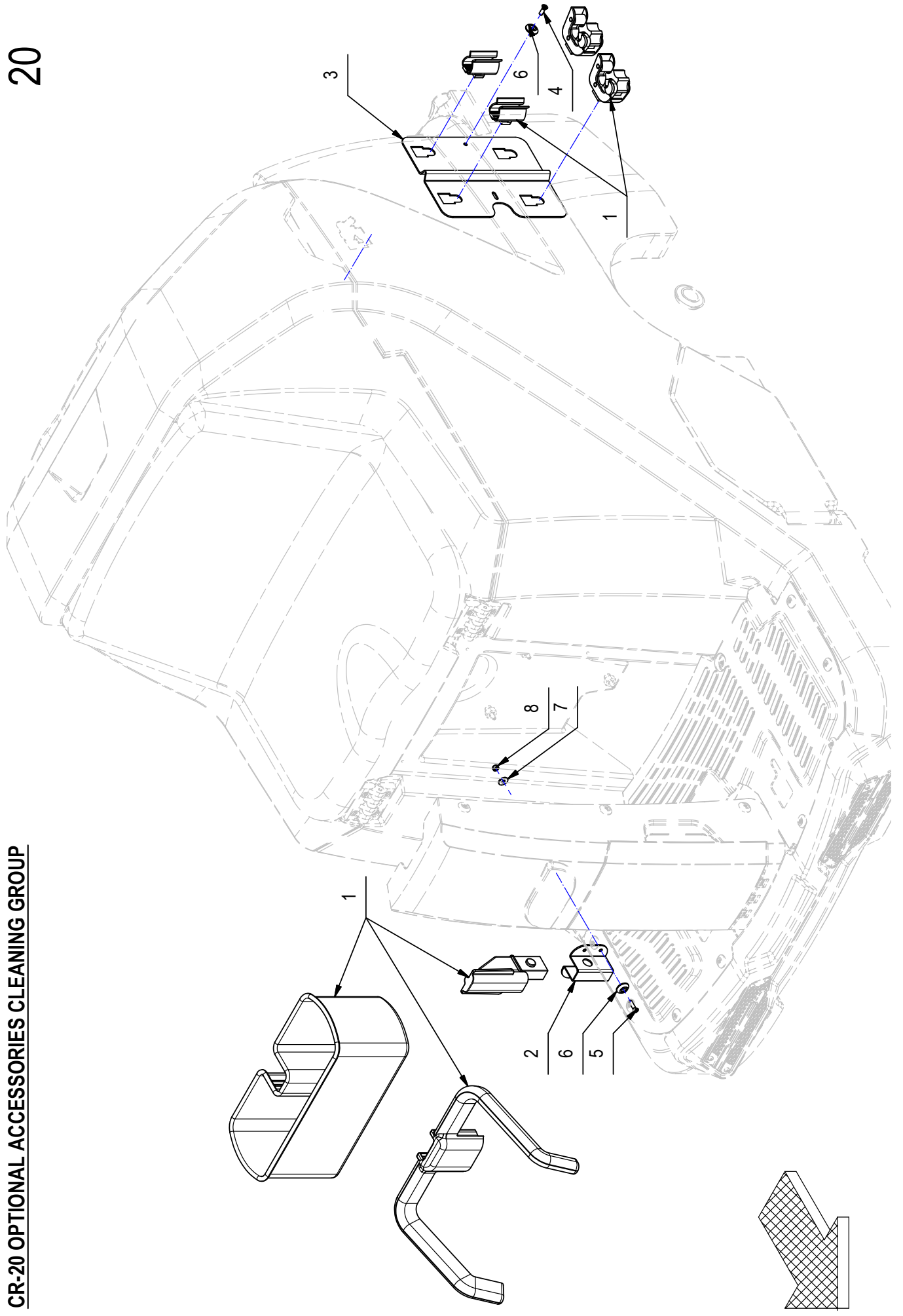


**CR-18 OPTIONAL GROUP FLASHING**

COMPONENT	CODE	QUANTITY	DENOMINATION
1	408833	3	SCREW
2	409141	3	WASHER
3	415897	3	LOCK NUT
4	416068	1	WINKING LIGHT
5	438514	1	CABLE

**CR-20 OPTIONAL ACCESSORIES CLEANING GROUP**

20



**CR-20 OPTIONAL ACCESSORIES CLEANING GROUP**

20

COMPONENT	CODE	QUANTITY	DENOMINATION
1	436473	1	OPTIONAL ACCESSORIES CLEANING GROUP
2	436474	1	SUPPORT
3	436475	1	SUPPORT
4	408516	2	SCREW
5	408892	4	SCREW
6	400250	6	SPECIAL WASHER
7	409151	4	WASHER
8	416781	4	LOCK NUT



NOTE

A series of horizontal dashed lines for writing notes, spanning the width of the page.



NOTE

A series of horizontal dashed lines for writing notes, spanning the width of the page.



# HAMMERHEAD®



450**RS**



500**RS**



500**SS**



600**SS**



650**RS**



750**RS**



550**RDX**



650**RDX**



700**RSX**



750**RDX**



870**SR**

## HEADQUARTERS

4713 Old Gettysburg Road  
Mechanicsburg, PA 17055 USA

## CONTACT US

800.6.Bortek

717.737.7591

Orders@BortekIndustries.com

BortekIndustries.com/[CUSTOMER LINK](#)

**SWEEPERLAND.COM**

A complete family of  
power cleaning machines.