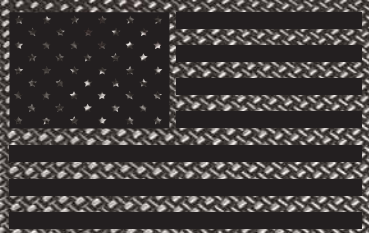




A FAMILY COMPANY SINCE 1967

# FACTORYCAT<sup>®</sup>

## FULL LINE CATALOG



HANDMADE IN  
**USA**

Free Demonstration At Your Facility!

# 800-626-7835

[www.sweeperland.com](http://www.sweeperland.com)





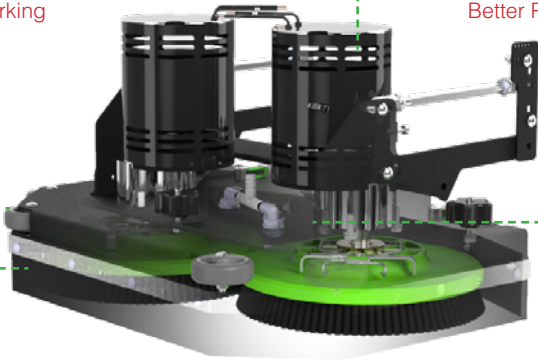
# HANDMADE TOUGH IN USA

Since 1986, our family owned company has been designing, building and supporting the best in floor maintenance equipment. Our **FACTORYCAT** brand, services the world with unsurpassed industrial cleaning equipment, continually exceeding expectations, and setting the industry bar that much higher. We've built our reputation by providing the highest value machines and providing local support via 425 distributors in over 42 different countries.

## TWO SCRUB SYSTEMS TO CHOOSE FROM

Corner Rollers  
Non-Marking

HD Motors  
Better Performance



Thick Steel Design  
7-10g Thick for Durability

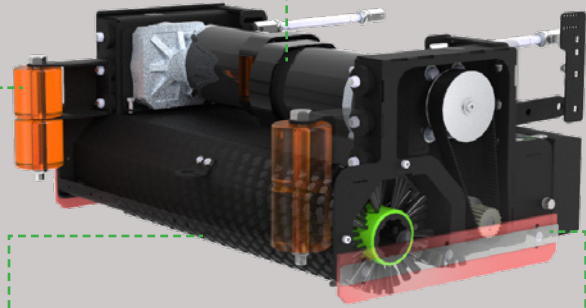
Aluminum Deck Design  
Corrosion Resistance

### Disk Benefits

- Brush / Pad Selection
- Lowest Maintenance Cost
- Gimballed Drivers Improves Cleaning On Irregular Floors
- Brushes Individually Driven For Unmatched Performance

Corner Rollers  
Non-Marking

HD Motors  
Better Performance

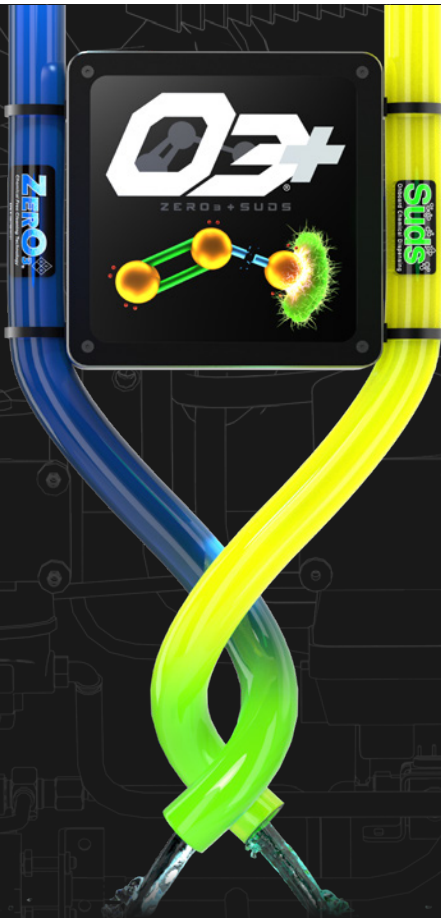


Oversized Brushes (6")  
Longer Life

Thick Steel Design  
7-10g Thick for Durability

### Cylindrical Benefits

- Eliminates Dust Mopping
- Scrub & Sweep Simultaneously
- Superior Expansion Joint Cleaning



## Clean Your Way - Onboard O3+®

In most applications, chemical-free cleaning results in acceptable levels of cleanliness. But, there are still applications and soil loads that require chemistry. In those cases, what do you do?

The **O3+® System** provides you two completely separate systems: ZERO3® Aqueous Ozone (AO) system and Suds Chemical Dilution system.

With the ability to immediately dispense detergent or AO at the flip of a switch, we provide a system that is desired in today's market.

-  Reduce the Cost to Clean
-  Minimize Environmental Impact
-  Improve Facility Appearance
-  Easy Operation & Safe Handling of Chemicals

# WALK BEHIND SCRUBBERS

The **FACTORYCAT** walk-behind scrubbers bring renowned toughness into the walk-behind auto scrubber market. Their compact length allows the battery scrubbers to maneuver into congested areas and their unique design keeps the scrub deck well protected. The large clean water and recovery tanks tip back for easy scheduled maintenance. Our thick steel frames and heavy duty components keep **FACTORYCAT** scrubbers working long after others have been discarded.



**MICROMAG**

17" & 20"  
(43.2 & 51 cm)



**MICROMINI**

17" & 20"  
(43.2 & 51 cm)



**MICRO-HD**

17", 20", & 26"  
(43.2, 51 & 66 cm)



**MINI-HD**

26" & 28"  
(66 & 71.1 cm)



**MAG-HD**

30" & 34"  
(76.2 & 86.4 cm)

**Disk Scrub Path:**

**Cylindrical Path:**

**Dimensions (LxWxH):**

**Solution / Recovery Tank:**

**Run Time:**

**Theoretical Coverage:**

35" x 18" x 38"  
(88.9 x 45.7 x 96.5 cm)

42" x 21" x 39"  
(106.7 x 53.3 x 99.1 cm)

45" x 21" x 39"  
(114.3 x 53.3 x 99.1 cm)

52" x 22" x 40"  
(132.1 x 55.9 x 101.6 cm)

55" x 26" x 40"  
(132.1 x 66 x 101.6 cm)

10 Gal / 10 Gal  
(37.6 / 37.6 liters)

10 Gal / 10 Gal  
(37.6 / 37.6 liters)

13 Gal / 15 Gal  
(49.2 / 56.8 liters)

21 Gal / 23 Gal  
(79.5 / 87 liters)

35 Gal / 37 Gal  
(132.5 / 140.1 liters)

Up to 2.5 Hours\*

Up to 3.5 Hours\*

Up to 2.5 Hours\*

Up to 3.5 Hours\*

Up to 5.0 Hours\*

Up to 15,748 sqft/hr  
(1,436 sqm/hr)

Up to 15,748 sqft/hr  
(1,436 sqm/hr)

Up to 27,027 sqft/hr  
(2,510.9 sqm/hr)

Up to 27,027 sqft/hr  
(2,510.9 sqm/hr)

Up to 31,915 sqft/hr  
(2,965 sqm/hr)



**Front Fill System**  
Operator Ergonomics for Easy Fill

**Vacuum Screen Isolated**  
Extends Vacuum Motor Life

**500 lb Actuator**  
Powerful Performance

**Vacuum Box**  
Protects Vacuum Motor

**HD Scrub Motors**  
Performance & Long Life

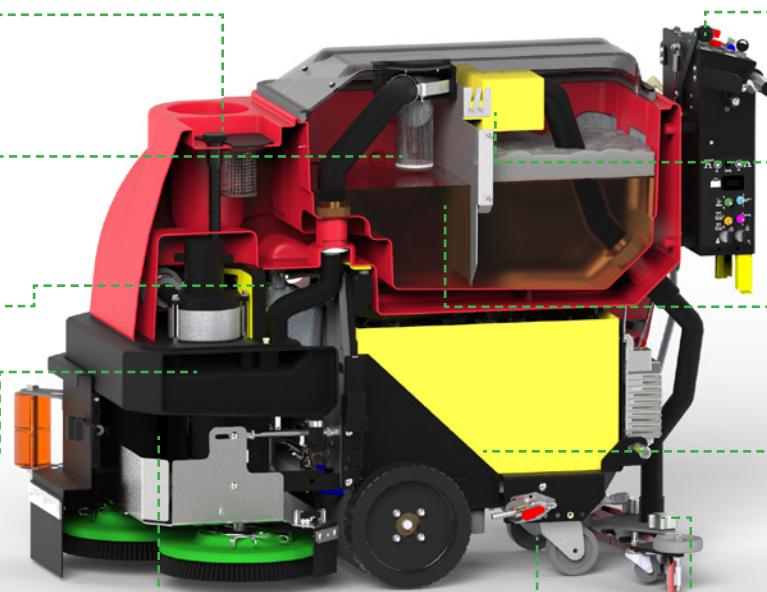
**Marine Grade Controls**  
Easy Maintenance

**Drain Saver Basket**  
Eliminates Clogged Floor Drains

**Stainless Tank Baffle**  
Keeps Foam on "Dirty" Side

**Poly Battery Box**  
Keeps Liquid Contained

**Grey Wheels & Wall Rollers**  
Eliminates Skid Marks



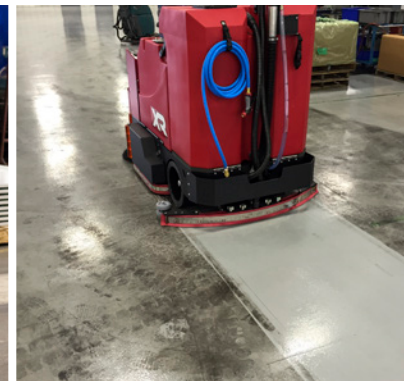


# RIDE-ON SCRUBBERS

The **FACTORYCAT** ride-on scrubber line offers customers an ideal and affordable solution to their floor cleaning needs. The three platforms include a powerful 36-volt system and heavy duty, steel construction for the most severe environments. Adjustable steering columns are standard, as is the front, steel apron which protects the operator's feet from collision. An American Made front wheel drive system allows for U-Turns within the machine's length, and unmatched maneuverability. Stainless fasteners and filter screens simplify service.



	<b>PILOT-HD</b>	<b>GTX-ST / GTX-HD</b>	<b>GTR-ST / GTR-HD</b>	<b>XR</b>
<b>Disk Scrub Path:</b>	26" & 28" (66 & 71.1 cm)	26", 28", 30" & 34" (66, 71.1, 76.2 & 86.4 cm)	30" & 34" (76.2 & 86.4 cm)	34", 40" & 45" (86.4, 101.6 & 114.3 cm)
<b>Cylindrical Path:</b>	25" (63.5 cm)	25", 29" & 33" (63.5, 73.7 & 83.8 cm)	29" & 33" (73.7 & 83.8 cm)	34", 40" & 46" (86.4, 101.6 & 116.8 cm)
<b>Dimensions (LxWxH):</b>	48" x 24" x 55" (66 x 76.2 x 86.4 cm)	64" x 34" x 56" (162.6 x 86.4 x 142.2 cm)	64" x 37.8" x 57" (157.5 x 96 x 144.8 cm)	69" x 40" x 56" (175.3 x 91.4 x 142.2 cm)
<b>Solution / Recovery Tank:</b>	22 Gal / 23 Gal (83.3 / 87.1 liters)	33 Gal / 36 Gal (124.9 / 136.3 liters)	46 Gal / 49 Gal (174.1 / 185.5 liters)	65 Gal / 78 Gal (246.1 / 295.3 liters)
<b>Run Time:</b>	Up to 4.0 Hours*	Up to 4.5 Hours*	Up to 5.0 Hours*	Up to 5.0 Hours*
<b>Theoretical Coverage:</b>	Up to 26,745 sqft/hr (2,484.7 sqm/hr)	Up to 44,118 sqft/hr (4,099.0 sqm/hr)	Up to 46,643 sqft/hr (4,333.3 sqm/hr)	Up to 46,643 sqft/hr (4,333.3 sqm/hr)



**Drain Saver Basket**  
Protect Your Drains

**Vacuum Screen**  
Vacuum Motor Protection

**Tip Back Tanks**  
Operator Ease for Draining

**Vacuum Protection**  
& Muffler System

**Service Cabinet**  
Single Point Service Location

**Flip-up Bumper**  
Steel Bumper for Protection

**HD Tires**  
Solid Tire Promotes Long Life

**Dual Cup Holders**  
Operator Benefit

**Indicator Dash Lights**  
Operator Ease

**Heavy Duty Front Apron**  
Operator Foot Protection

**Onboard Charger**  
Optional for CE or CEC certifications

**Steel Frame**  
HD Frame for Long Life

**Non-Marking Rollers**  
Machine Protection

# SWEEPERS

The **FACTORYCAT** sweepers were built specifically with industrial cleaning needs in mind. They are built for: dirt, dust, metal shavings, foundry sand, bolts, paper, wood, whatever there is. These sweepers are all-steel and use oversized components throughout. The filter is cleaned by an on-board mechanism and will potentially last the life of the machine. No oil to change, fuel to spill, tanks to exchange, or valves to grind making our sweepers the easiest and most efficient to use on the market.



**34**



**TR**

<b>Sweep Path:</b>	34" <i>(86.4 cm)</i>	46" <i>(116.8 cm)</i>
<b>Main Broom:</b>	26" x 10" <i>(66 x 25 cm)</i>	32" x 10" <i>(81.3 x 25 cm)</i>
<b>Hopper Capacity:</b>	2 cubic feet <i>(56.6 liters)</i>	4 cubic feet <i>(113.3 liters)</i>
<b>Dimensions (LxWxH):</b>	58" x 31" x 38" <i>(147.3 x 78.7 x 96.5 cm)</i>	64" x 37" x 55" <i>(162.6 x 94 x 139.7 cm)</i>
<b>Run Time:</b>	Up to 4 Hours	Up to 7 Hours
<b>Theoretical Coverage:</b>	Up to 30,000 sqft/hr <i>(2,787.1 sqm/hr)</i>	Up to 60,000 sqft/hr <i>(5,574.2 sqm/hr)</i>



**Self Propelled**  
Operator Ease

**Stainless Handlebar**  
Fully Adjustable

**10" Diameter Main Broom**  
Reduces Maintenance

**1/2 Ton Capacity Tire**  
Improved Manoeuvrability

**Self Adjusting Main Belts**  
Reduces Down Time

**Oversized Battery**  
Extends Run time

**Onboard Charger**  
Permits Remote Charging

**Baghouse Filter**  
High Capacity & Long Life

**900 LB. Capacity Caster**  
Improved Manoeuvrability

**Large/Powerful Side Broom**  
Increases Productivity



# BUILT-IN PROTECTION

A FAMILY COMPANY SINCE 1967



The Drain Saver Basket collects debris so it doesn't clog floor drains.

Water from rear squeegee travels through this hose into the recovery tank.



White Filter captures fine particulate.

Airflow is drawn through this hose. Any water from this point will travel to the Yellow Vac Box.

Stainless Steel Baffle keeps foam on left side, and away from the vac screen intake.

As the tank fills, the Float Ball rises until it is sucked into a sealed position, cutting off airflow to the vacuum motor and triggering red dash light.

## Your Total and Complete Cleaning Solution Resource Since 1967

Bortek has over 50 years' experience in the Power Cleaning Equipment and Commercial Supply Industry. We've maintained the best employees, amazing customers, world-class customer service, awesome power cleaning equipment, best-in-the-biz liquid cleaners, and an extensive selection of commercial supplies.

We get a real kick out of helping our customers with their cleaning equipment and commercial supply needs. We love what we do and we're pumped to work with you. Running and managing aspects of a business can be a total headache in and of itself. Maintaining your facility or being responsible for road maintenance/clean-up, just adds to that pressure behind your eyeballs. It's a raw deal sometimes, we understand. That's part of why we do what we do. We like things to be simple.

### CONTACT US

800.6.Bortek  
 info@sweeperland.com  
 sweeperland.com



## APPLICATIONS

- Fabrication Shops
- Warehouses
- Machine Shops
- Automotive Shops
- Car Dealerships
- Government
- Aviation
- Food Packaging
- Beverage Distribution
- Sports Arenas
- Saw Mills
- Foundries