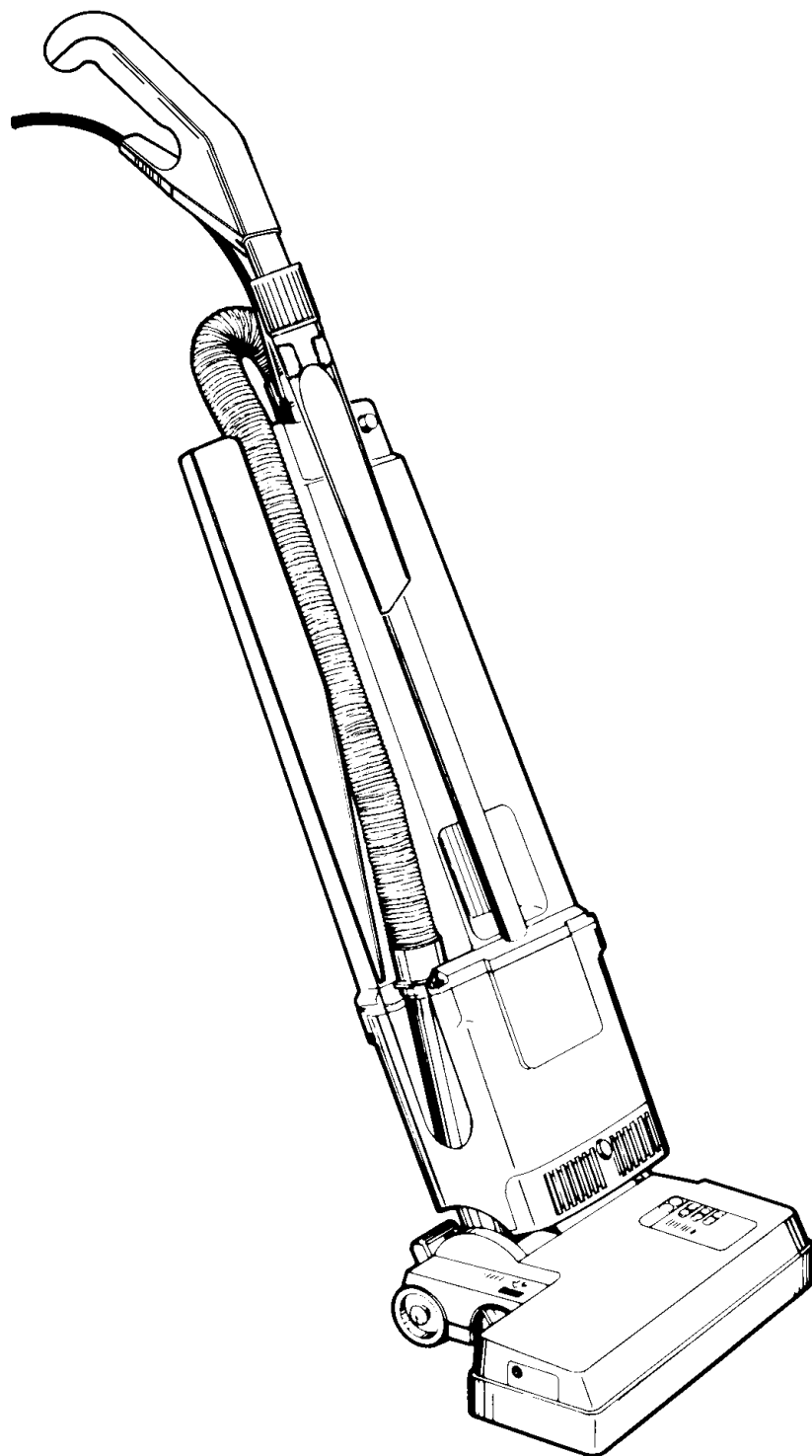


WINDSOR

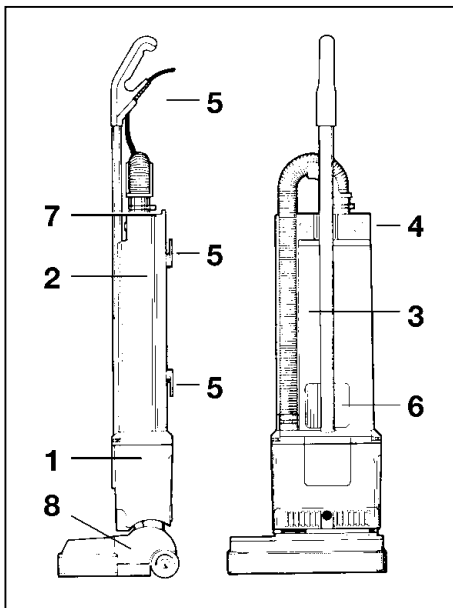
VERSAMATIC



VS 14 / VS 18

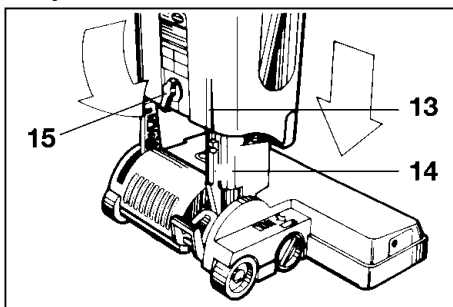


VERSAMATIC VS 14 / VS 18



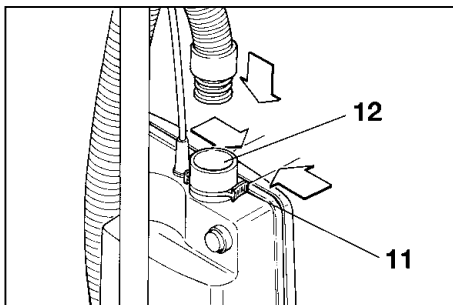
- 1 Vacuum motor housing
- 2 Dustbag housing
- 3 Suction hose
- 4 On - off switch
- 5 Cables cleats
- 6 Carrying recess
- 7 Back cover
- 8 Power head

Preparation



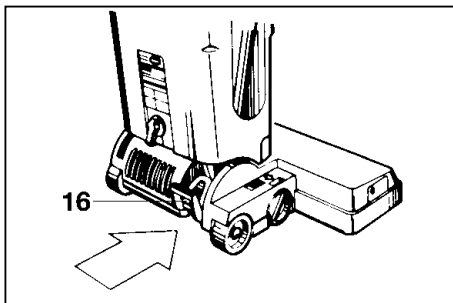
Assembling the vacuum cleaner

Hold the vacuum section in the vertical position and insert into the power head. Locate the line (13) on the motor housing accurately opposite the rib on the swivel neck (14). The locking catch (15) must be turned to the left during the locating. Secure the vacuum section in place the turning the locking catch to the vertical position.



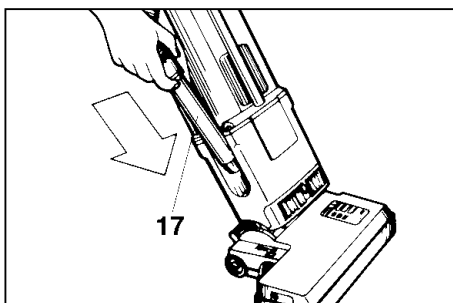
Attaching suction hose

Push the black end of the hose into the connecting tube (12) so that it clicks into place. To disconnect the hose press the retaining ring (11) and pull the hose out of tube.



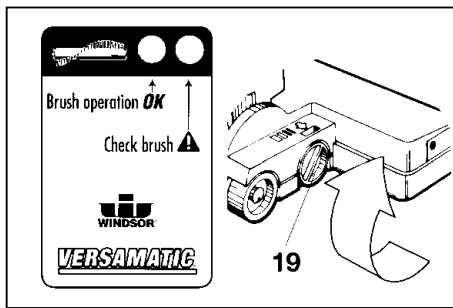
Swivel neck latch

To release the machine from the upright position depress the foot pedal (16).



Power head on

Power head motor stops automatically when hand nozzle (17) is withdrawn and restarts automatically when reinserted. If power head does not start check that hand nozzle is fully inserted.



Brush controller

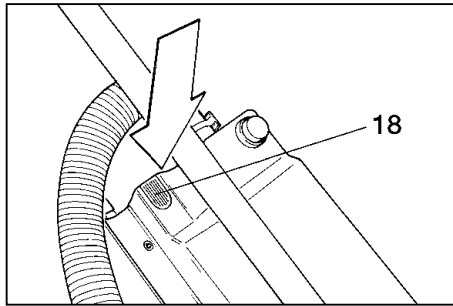
The electronic brush controller monitors the operation of the brush.

Green light: Brush correctly set and running.

Green light and red light: Adjust the brush setting by turning the Pile adjustment knob (19) to a lower number.

If the lights still show at position number one the brush strip is worn out and must be replaced.

Red light: The brush has become blocked and is not turning. Switch off. Unplug from the outlet and clear the blockage.



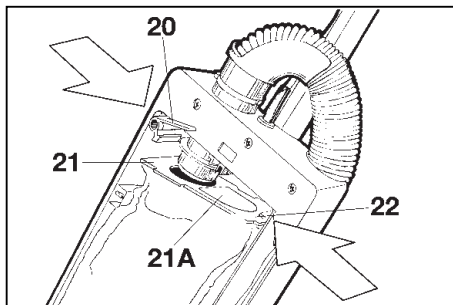
Filter level indicator

If warning light (18) comes on check:

- Is the dust bag full?
- Is there a blockage in the hose or power head?

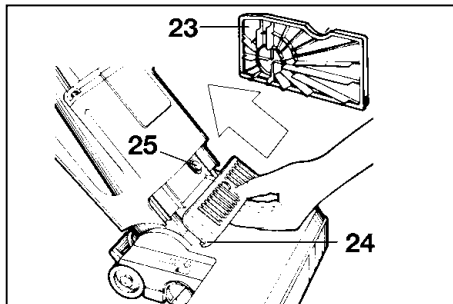
Maintenance

CAUTION - Always unplug machine at mains outlet before dismantling any part of the machine. For guarantee use only genuine Windsor-Parts (e.g. Filter Bags, Filtrés, Brush strip, etc.)



Changing the paper bag

To change the dust bag: Remove back cover. Push down lever (20). Lower dust bag from connecting tube. Close aperture of dust bag top with cardboard cover (21 A). To fit new dust bag: Insert top of dust bag (21) into slot (22). Push lever (20) down and fit aperture of dust bag top over connecting tube. Return lever so that it is in horizontal position.

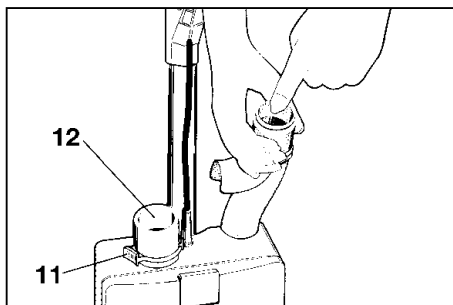


Changing filters

Vacuum motor filters (23) - Replace after ca. 20 paper bags have been used.

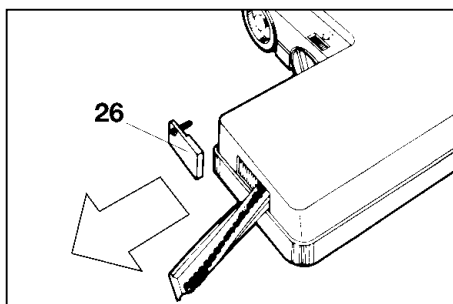
Exhaust filter (24) - Change when it becomes dirty.

Press the button (25) and pull the filter forwards. To insert a new filter, locate the filter into the motor housing and push up until the button (25) engages into place.



Clearing blockages

If the bag-full warning light shows before the dust bag is full check for blockages. Release the hose by squeezing the tabs of the retaining ring (11). Reverse the hose and put the wand-end into the connecting tube (12). Remove the obstruction by switching on the machine, holding the hose upright. If necessary rapidly lift your hand on and off the end of the hose. Never use a stick to clear the hose.



Changing the brush strip

To replace brush strip: Remove brush strip cover (26). Turn brush roller so that the brush strip can then be pulled out. Ensure that the new brush strip is fully inserted.

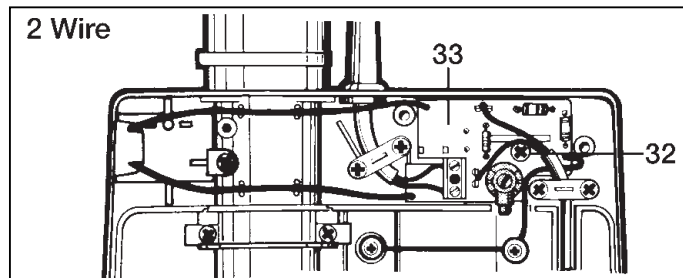
N.B. Replace the brush strip before the bristles wear down to the level of the support rod.

Service Instructions

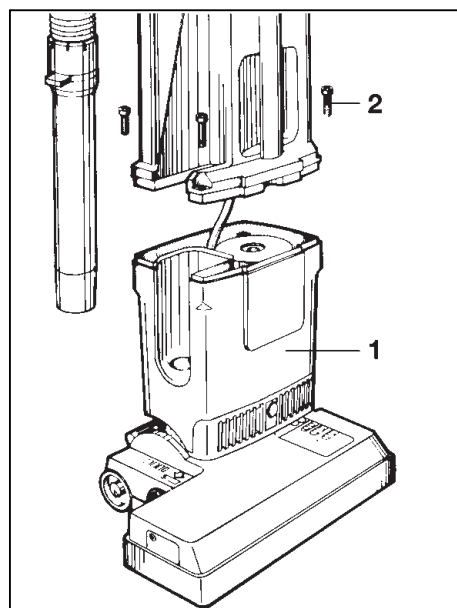
Maintenance

CAUTION - Maintenance and repairs must be done by qualified personnel.

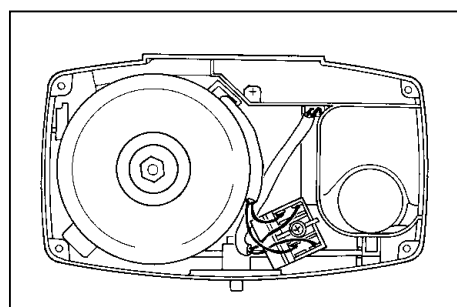
WARNING - To reduce the risk of electric shock - unplug before cleaning or servicing.



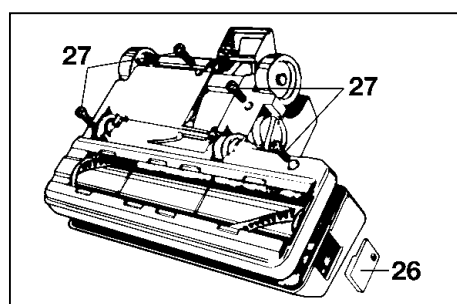
The switch housing cover is removed by taking out the three screws then lifting off. Circuit board (33) can be removed by loosening screw (32).



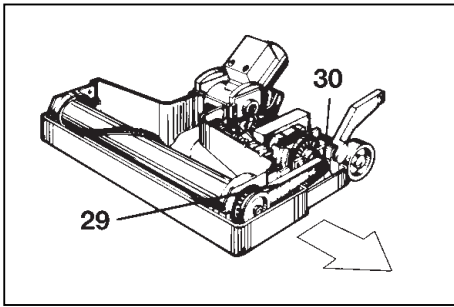
To remove the dust bag housing (2) from the vacuum motor housing (1) take off the back cover and remove the four large screws. Keeping the power head attached, the dust bag housing can be eased off.



To remove the vacuum motor, first detach the two black wires from the terminal block. When replacing ensure that the motor support is fully located onto the motor cover. The motor cover should then be firmly located onto the vacuum motor and the motor, with its cover and support, firmly seated into position as shown in the vacuum motor housing. When properly seated the motor cannot be turned. Replace motor seal.

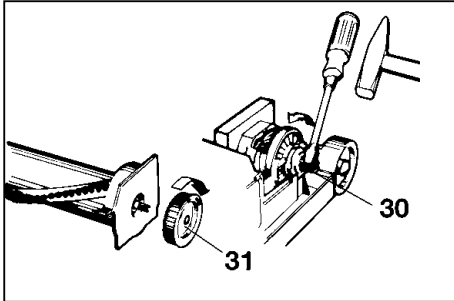


To remove the power head cover, take off the brush strip cover (26) and remove the four large screws (27) from underneath the chassis. The cover can then be lifted off.



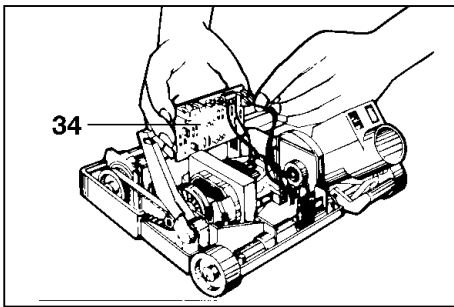
Changing the brush roller:

Push the belt (29) off the motor pulley (30) and remove the four screws which hold in the brush bearing blocks. Lift out the bearing blocks evenly. When replacing the roller with the bearing blocks, push downwards keeping the roller parallel with the chassis.



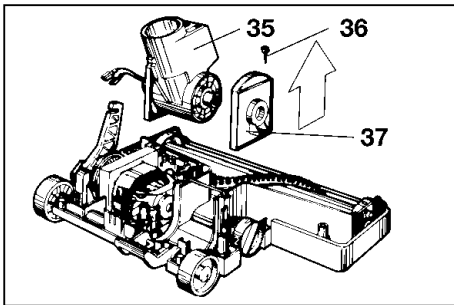
To remove the brush roller pulley (31) hold the roller in one hand and turn the pulley in a clockwise direction.

To remove the motor pulley (30) insert a screwdriver into a groove and give a light tap in an anticlockwise direction. The loosened pulley can then be removed.

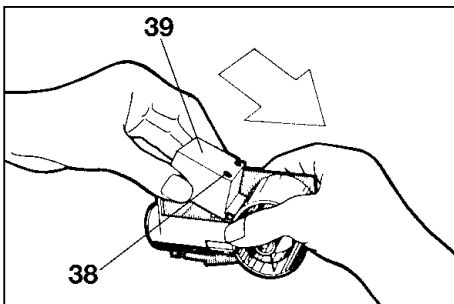


Changing the Electronic Controller (34):

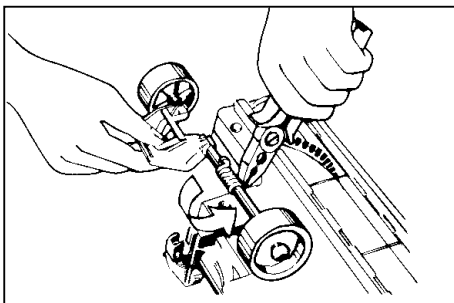
Disconnect the lead from the motor. Lift the controller upwards from the motor. Lift the controller upwards from its location and then disconnect the lead from the swivel neck.



To remove the swivel neck (35), take out the two small screws (36) from the swivel neck supports (37) then lift the swivel neck assembly from the chassis. On re-assembly check that the leads from the swivel neck do not become trapped when the power head cover is replaced.

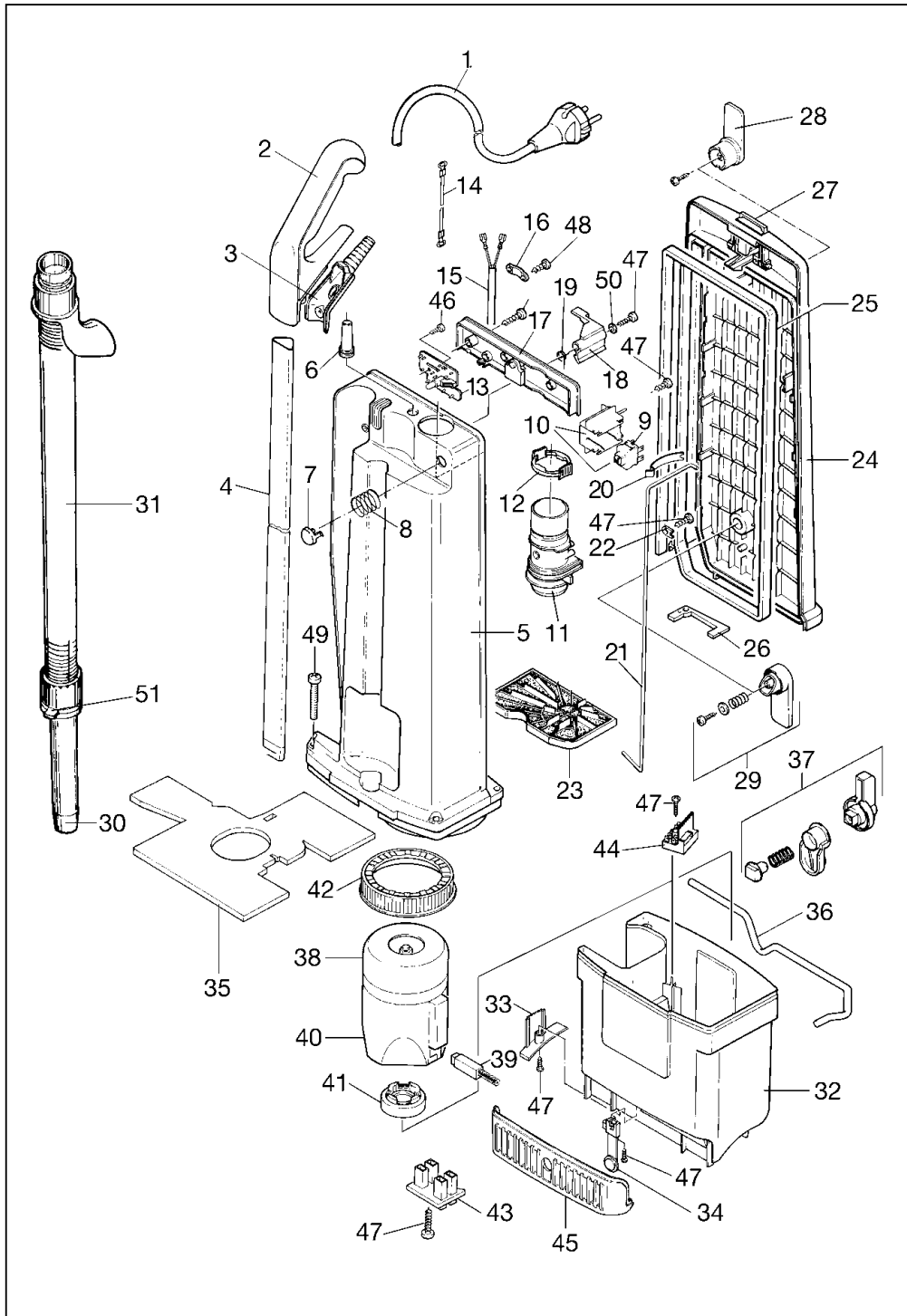


To remove the swivel neck cover, take out the retaining screw (38) and slide the cover (39) downwards then lift out. On re-assembly check that the leads do not become trapped.



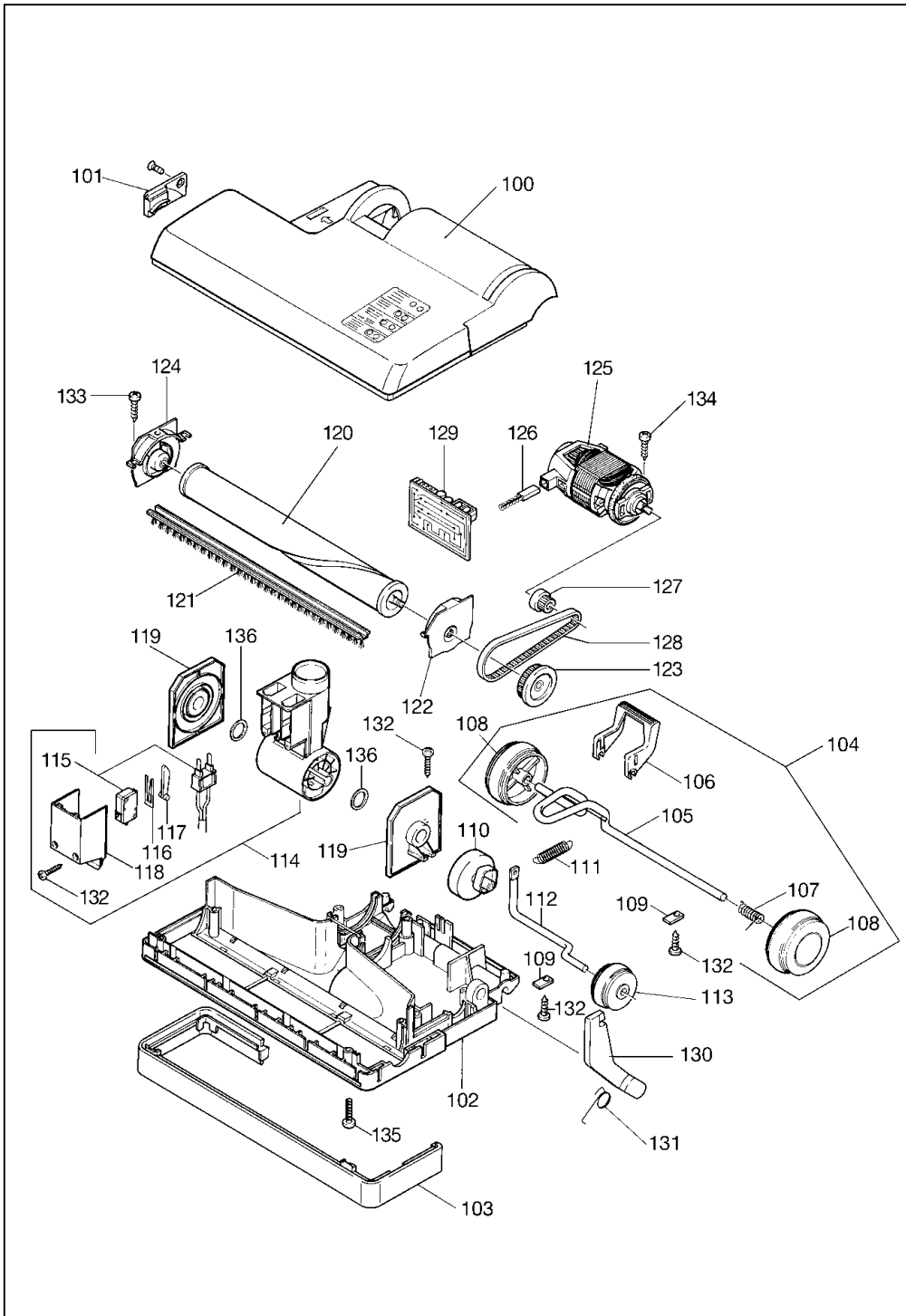
To remove the axle assembly unscrew the three screws and take off the axle clamps. Before replacing, lightly grease the axle. To replace, hook one end of the spring on the axle then grip the other end with a pair of pliers and turn about a quarter of a turn. Keeping the wheels at the ends of the axle press the axle assembly back into place.

VS 14 / VS 18



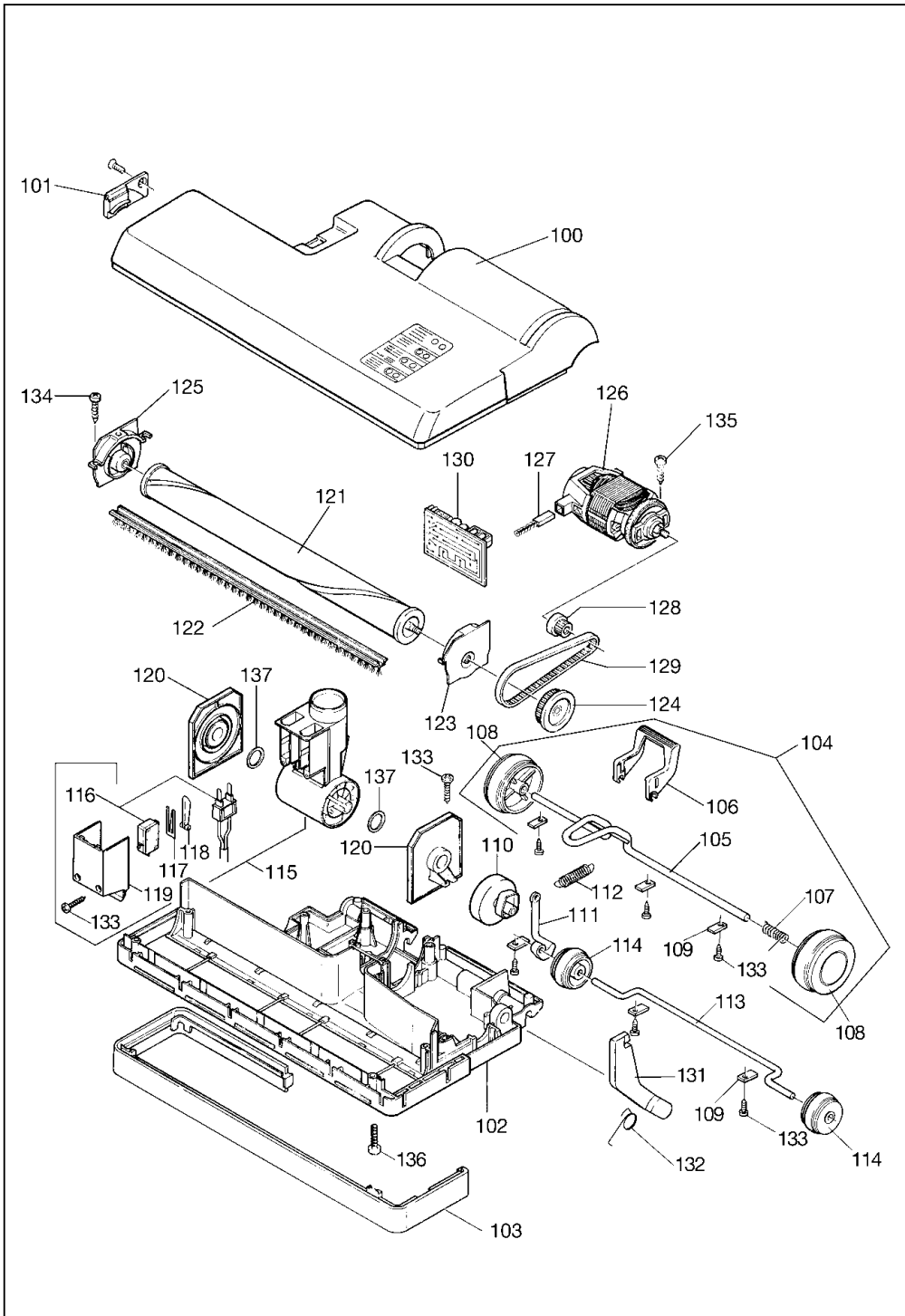
Ref.	Part Number	Description
1	1870 dg	Cable with EU-Plug
	1872 dg	Cable with GB-Plug
2	1037 EH	Handle grip
3	1596 hg	Handle cover
4	1794	Handle
5	1972 bl	Dust bag housing
6	1420 hg	Grommet
7	1966 hg	Switch button
8	1962	Spring
9	05114	Switch
10	1955	Switch holder
11	1038 bl	Connecting tube
12	1792 hg	Retaining ring
13	1976 ER	Printed circuit board
14	0818	Antistatic wire
15	1284	Internal cable
16	1030 UL	Cable clamp
17	1026 bl	Switch housing cover
18	1040	Dust bag lever
19	1041	Return spring
20	1027	Leaf spring
21	1025	Connecting rod
22	1073	Clamp
23	1044	Motor filter
24	1039 bl	Back cover
25	1059	Back cover seal
26	1061	Gasket
27	1057 BL	Latch with spring and pin
28	1461 bl	Cable hook
29	1462 BL	Cable hook, turnable
30	1517 hg	Hand nozzle
31	1516 hg	Hose
32	1797 WI	Motor housing
33	1521 hg	Housing cover r. h.
34	1798 dg	Filter retaining button
35	1896	Sound insulation
36	1553	Locking rod
37	0819 dg	Locking catch
38	1888	Vac motor 230 V / 1000 W
	1889	Vac motor 240 V / 1000 W
39	0511/1	Carbon brush set / vac mot.
40	1821 UL	Motor cover
41	1411	Motor support
42	1047	Vac motor seal
43	1541	Contact holder 2-wire
44	1012 N	Terminal block
45	1534 hg	Exhaust filter
46	0101	Screw C 3,9 x 9,5 DIN 7981
47	0102	Screw F 3,9 x 13 DIN 7981
48	0103	Screw C 3,9 x 16 DIN 7981
49	0111	Screw AM5 x 30 DIN 7985
50	0140	Washer 4,3 DIN 125
51	1034 hg	Retaining ring

VS 14

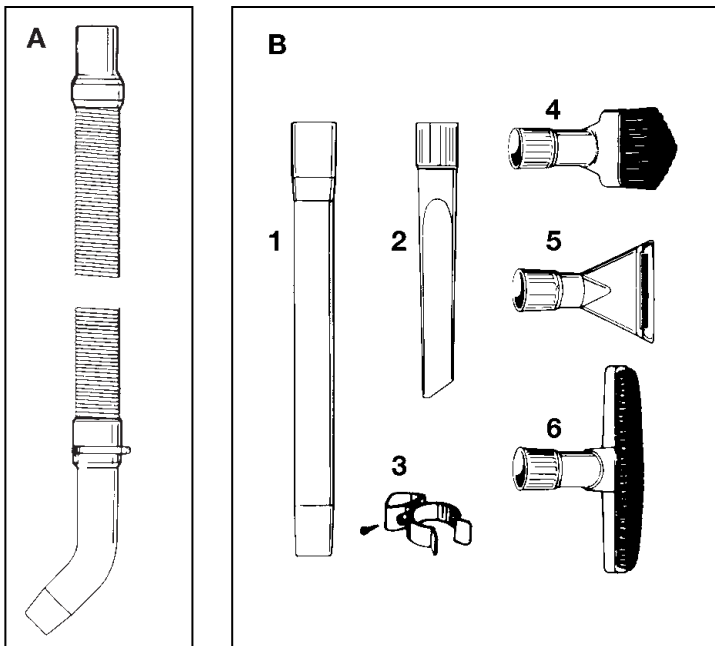


Ref. Number	Part Number	Description
100	2635 WI	Cover assembly
101	2542	Brush strip cover
102	2592 hg	Chassis, cpl.
103	2522 hg	Bumper
104	2630 hg	Axle assembly
105	2525	Axle, only
106	2528 or	Foot pedal
107	2010	Axle spring
108	2614 hg	Wheel
109	2014	Axle clamp
110	2622 hg	Pile adjustment knob
111	4019	Spring
112	2524	Pile adjustment axle
113	2608 hg	Pile adjustment wheel
114	2537 hg	Swivel neck assembly
115	2540	Wire, swivel neck
116	2546	Leaf spring
117	2534	Control lever
118	2530 hg	Swivel neck cover
119	2538	Swivel support
120	2030 ER	Brush assembly, cpl.
121	2046	Brush strip
122	2091	Bearing block l. h.
123	2458	Brush roller pulley
124	2047	Bearing block r. h.
125	2023 ER	Brush motor 230 V, 150 W
	2101 ER	Brush motor 240 V, 150 W
126	05084S	Carbon brush set / brush motor
127	2025	Motor pulley
128	4024	Drive belt
129	2573 ER	Electronic control PC-board, 230 V
	2574 ER	Electronic control PC-board, 240 V
130	2531 hg	Support lever
131	2545	Return spring
132	0102	Screw F 3,9 x 13 DIN 7981
133	0103	Screw C 3,9 x 16 DIN 7981
134	0174	Screw C 3,9 x 22 DIN 7981
135	0111TL	Screw AM5 x 30 DIN 7985

VS 18



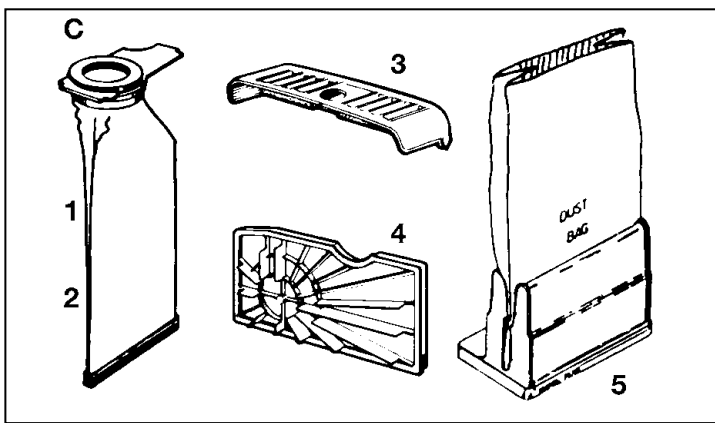
Ref.	Part Number	Description
100	4547 WI	Cover
101	2542	Brush strip cover
102	4529 hg	Chassis, cpl.
103	4522 hg	Bumper
104	4617 hg	Axle, cpl.
105	4523	Axle only
106	2528 or	Foot pedal
107	2010	Axle spring
108	4603 hg	Wheel
109	2014	Axle clamp
110	2622 hg	Pile adjustment knob
111	4012	Pile adjustment lever
112	4019	Spring
113	4006	Pile adjustment axle
114	2608 hg	Pile adjustment wheel
115	2537 hg	Swivel neck assembly
116	2540	Wire, swivel neck
117	2546	Leaf spring
118	2534	Control lever
119	2530 hg	Swivel neck cover
120	2538	Swivel support
121	4033 ER	Brush assembly
122	4028	Brush strip
123	2091	Bearing block l. h.
124	2458	Brush roller pulley
125	2047	Bearing block r. h.
126	4069 ER	Brush motor 230 V, 200 W
127	4070 ER	Brush motor 240 V, 200 W
128	05084S	Carbon brush set / brush motor
129	2025	Motor pulley
130	4024	Drive belt
131	4533 ER	Electronic control PC-board 230 V
132	4534 ER	Electronic control PC-board, 240 V
133	0102	Screw F 3,9 x 13 DIN 7981
134	0103	Screw C 3,9 x 16 DIN 7981
135	0174	Screw C 3,9 x 22 DIN 7981
136	0111TL	Screw AM5 x 30 DIN 7985



A) Vacuum Extension Hose 1087
Optional

B) VSM-Tool Kit - Optional

- | | | |
|---|----------------------------|------|
| 1 | Straight Tube | 1084 |
| 2 | Crevice Nozzle | 1092 |
| 3 | Clip | 1081 |
| 4 | Dusting Brush | 1094 |
| 5 | Upholstery Nozzle | 1090 |
| 6 | Wall- and Upholstery Brush | 1325 |



C) Bags and Filters

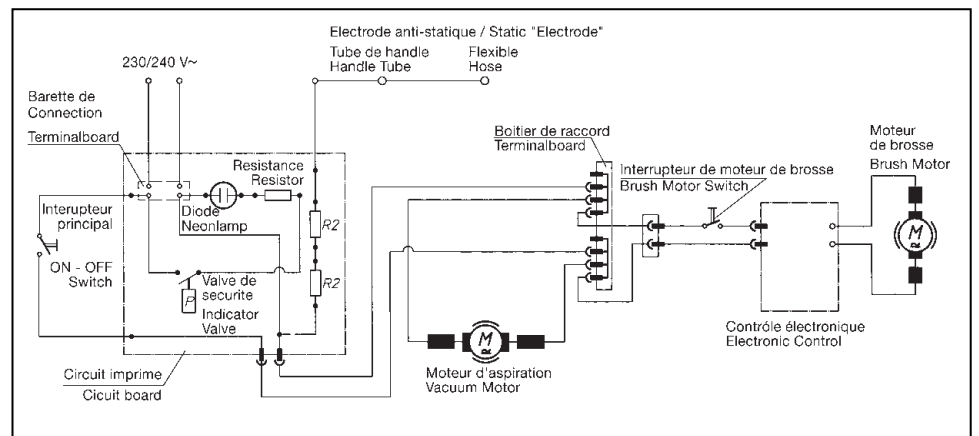
- | | | |
|---|------------------------------|------|
| 1 | Paper Bag (Pkg of 10) | 2003 |
| 2 | Cloth Bag | 1079 |
| | (only use with Micro-Filter) | |
| 3 | Exhaust Filter | 1534 |
| 4 | Vac Motor Filter | 1044 |
| 5 | Micro-Hospital-Filter | 1435 |

! WARNING! Electric shock could occur if used outdoors or on wet surfaces!

Technical Details VS 14 (VS18)

Voltage	230 / 240 V, 50 Hz
Vacuum floor	8,6 amp.
Air flow	117 cfm
Dust bag	1,3 gal., 3-layer
Brush motor	1,4 (1,8) amp.
Brush width	12 3/4 (16 3/4) inches
Brush drive	non slip drive belt with electronic overload protection
Brush strip	replaceable
Height	48 inches
Width	14 (18) inches
Weight	16 (18) lbs

Wiring Diagram



WINDSOR INDUSTRIES, INC
1351 West Stanford Ave.
Englewood, Colorado 80110 USA
800-444-7654
303-762-1800
FAX: 303-762-0817