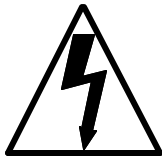
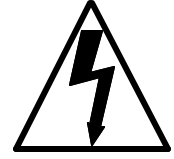


# AERO PLUS

## IMPORTANT SAFETY INSTRUCTIONS



READ AND UNDERSTAND ALL INSTRUCTIONS  
BEFORE OPERATING OR SERVICING MACHINE



**DANGER!** Failure to Observe These Instructions Can Cause Fire, Electrical Burn, Shock or Electrocution to Machine Operator or By-standers.

- **NEVER** attempt to operate machine unless you have been trained in its operation.
- **NEVER** operate in water.
- **NEVER** expose to rain. **ALWAYS** store indoors.
- **NEVER** operate machine with intake or exhaust grills removed.
- **NEVER** operate machine with a cut, abraded, or taped cord.
- **NEVER** operate machine with a broken grounding blade on the plug.
- **ALWAYS** replace entire cord when cord or plug is damaged in any manner.
- **NEVER** handle machine, cord or plug with wet hands.
- **NEVER** drop or insert any object into any machine opening.
- **ALWAYS** keep face, fingers, hair or any body part, or loose clothing away from any machine opening or moving part.
- **NEVER** attempt to service or perform maintenance functions while machine is plugged into electrical outlet.
- **NEVER** leave machine unattended when plugged in. Unplug machine from electrical outlet when not in use.
- **ALWAYS** turn machine off before unplugging from electrical outlet.
- **NEVER** operate machine in the presence of flammable or combustible liquid or fumes.

**WARNING:** Failure to Observe These Instructions Can Cause Machine or Property Damage and Possible Injury to Machine Operator and By-standers.

When any electrical motor, switch, cord or plug service is required, maintenance should only be done by an authorized service station, an electrician or other qualified persons.

- **Never** operate machine if it is not working properly, if it has been dropped, damaged, exposed to weather, or dropped in water. Return machine to service center for examination and repair.
- **Never** operate machine with any air opening blocked. Keep all air openings free of dust, lint, hair, etc.
- **Always** store machine indoors. Protect from rain or snow. Never spray top of machine with liquids.
- **Do not** pull or carry machine by electrical supply cord, use cord as a handle, close door on cord, pull cord around sharp edges or corners, or expose to heated surfaces.
- **Never** disconnect plug by pulling on cord. To disconnect from outlet grasp the plug, not the cord.
- **WARNING** - To Reduce The Risk Of Fire Or Electric Shock, Do Not Use This Fan With Any Solid-State Speed Control Device.
- Use Only GFCI Protected Receptacles.

**READ AND SAVE THESE INSTRUCTIONS**



# WARNING:

DO NOT ATTEMPT MAINTENANCE OR REPAIRS BEFORE DISCONNECTING CORD FROM ELECTRICAL POWER SOURCE. READ ALL INSTRUCTIONS AND FOLLOW ALL ILLUSTRATIONS CAREFULLY.

Follow grounding sequence of assembly as shown to ground machine and ensure safety to operator. GREEN ground wire must be attached to the motor ground and to the Motor Mount Plate to properly ground the entire machine.

**FAILURE TO DO SO MAY CAUSE ELECTROCUTION** due to improper connection of ground.

Replacement cords must be U.L. Listed / CSA approved and be of the identical electrical specifications as the original equipment cord.

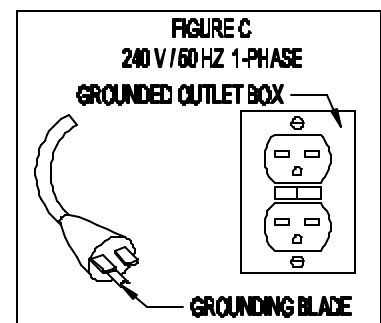
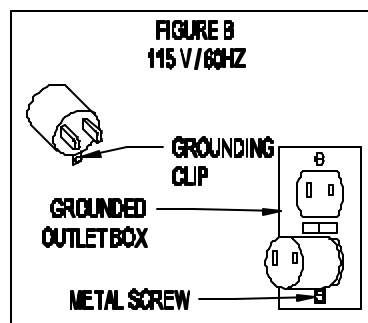
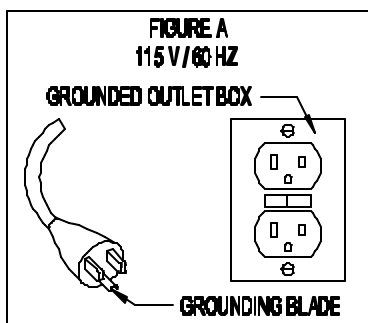
Check nameplate on machine to be sure voltage and cycle stated on nameplate is the same as voltage and cycle of electrical outlet.

The grounding blade on the plug must remain intact if the machine is to be properly grounded when plugged in and operated. An ungrounded machine can cause shock to the operator. See *Figure A*.

If connecting to an outlet that accepts only two blades use an adapter as in *Figure B*. **NEVER REMOVE THE GROUNDING BLADE.**

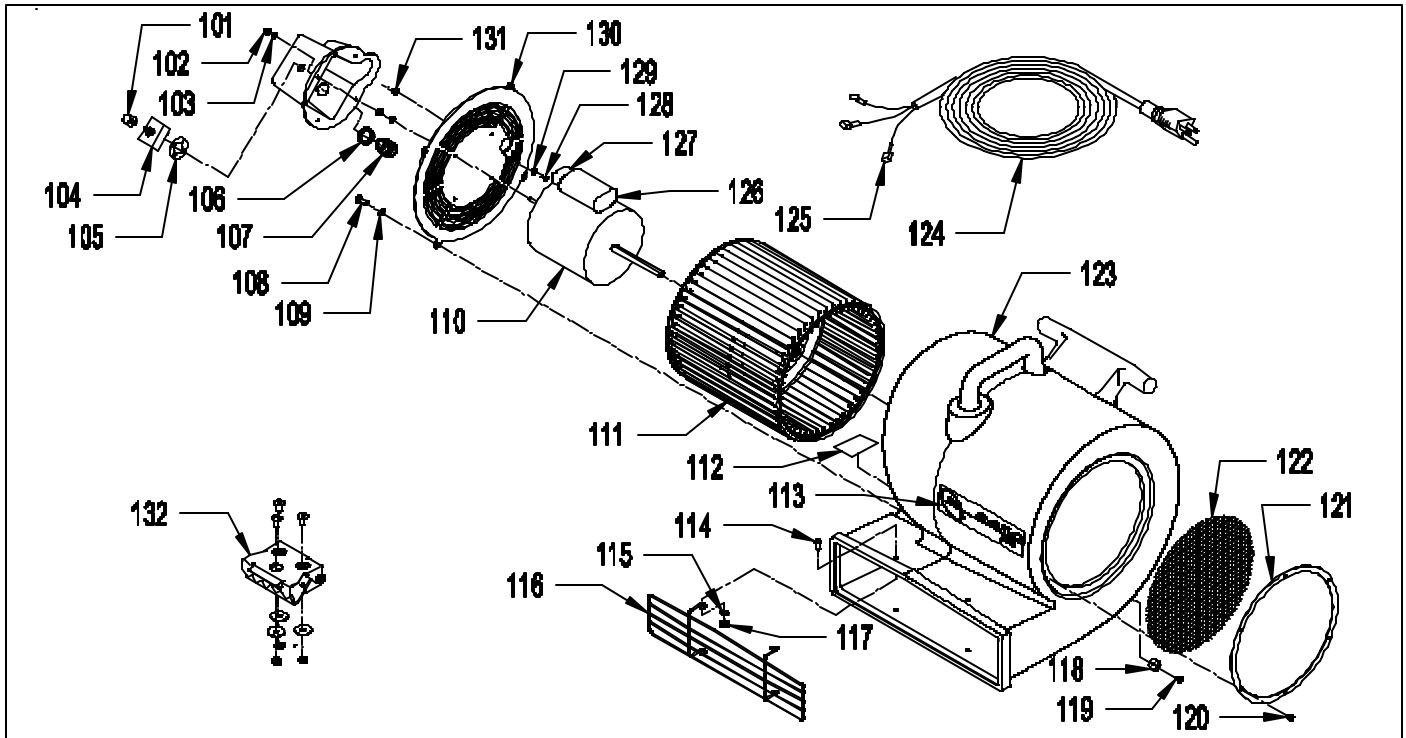
If it is necessary to use the adapter shown in *Figure B*, the machine is only properly grounded if the adapter's green colored clip is tied under a metal screw that holds the electrical outlet cover to the wall.

*Figure C*. Machines using 240 volt may or may not have the grounding (earthed) plug attached to the cord. For U.S.A. 240 volt 50 HZ, the plug is already supplied with the cord. For use outside the U.S.A., it may be up to the purchaser to have a proper grounding (earthed) plug attached.



**NOTE: IN CANADA, THE USE OF A TEMPORARY ADPATOR IS NOT PERMITTED BY CANADIAN ELECTRICAL CODE**

# AERO PLUS



<u>ITEM</u>	<u>PART NO.</u>	<u>DESCRIPTION</u>	<u>QTY.</u>
101	5490131	KNOB - WITH SET SCREW	1
102	9120660	10-32 HEX NUT WITH NY-LOK INSERET	8
103	9120370	7/32 I.D. X 1/2 O.D. X .032/.065 THICK SAE FLAT WASHER (#10)	8
104	4792041	SWITCH, 4 POSITION (OFF, HIGH, MED, LOW) WITH NUT	1
105	4792081	DECAL SET, AERO PLUS	1
106	0891130	PLASTIC STRAIN RELIEF NUT	1
107	3190381	STRAIN RELIEF, NON-FLEXIBLE	1
108	9121210	1/4-20 X 5/8 HEX BOLT	4
109	9120880	1/4 SPLIT LOCK WASHER	4
110	4792031	MOTOR, 115 VOLT, 3 SPEED, WITH CAPACITOR	1
	4792231	MOTOR, 240 VOLT, 3 SPEED, WITH CAPACITOR	1
111	4792051	CENTRIFUGAL DOUBLE INLET IMPELLER WHEEL WITH 5/16-24 X 5/8 SQUARE HEAD SET SCREW, CUP POINT	1
112	4792081	DECAL SET, AERO PLUS	1
113	4792081	DECAL SET, AERO PLUS	1
114	9120520	10-24 X 5/8 TRUSS HEAD PHILLIPS MACHINE SCREW	4
115	9120370	7/32 I.D. X 1/2 O.D. X .032/.065 THICK SAE FLAT WASHER (#10)	4
116	4792151	GRILL, OUTLET	1
117	9120350	10-24 HEX NUT WITH NY-LOK INSERT	4
118	6793371	RUBBER FOOT	2
119	9120205	8 X 1/2 PAN HEAD PHILLIPS SHEET METAL SCREW	2
120	9120785	10 X 3/8 PAN HEAD PHILLIPS SHEET METAL SCREW	6
121	4792291	LEFT INLET PLATE GUARD RING	1
122	4792071	PLATE, LEFT INLET	1
123	4792011	HOUSING, CENTRIFUGAL BLOWER	1
124	4792021	CORD, 18/3, 25' (115 VOLT, 100 VOLT)	1
	0294391	SHUKO CORD, 16/3 50' (240 VOLT)	1
125	4991361	FULLY INSULATED FEMALE SPADE TERMINAL 18-22 GAGE	2
126	4792251	CAPACITOR 115 VOLT	1
	4792261	CAPACITOR 240 VOLT	1
127	4792281	BOOT, CAPACITOR	1
128	9120520	10-24 X 5/8 TRUSS HEAD PHILLIPS MACHINE SCREW	1
129	9120330	#10 EXTERNAL STAR LOCK WASHER	1
130	4792061	MOTOR MOUNT PLATE	1
131	9120360	10-24 HEX NUT WITH STAR LOCK WASHER	2
132	4792169	CARPET CLAMP ASSEMBLY WITH INSTRUCTIONS (OPTIONAL)	1

# OPERATION INSTRUCTIONS

## 3 POSITION

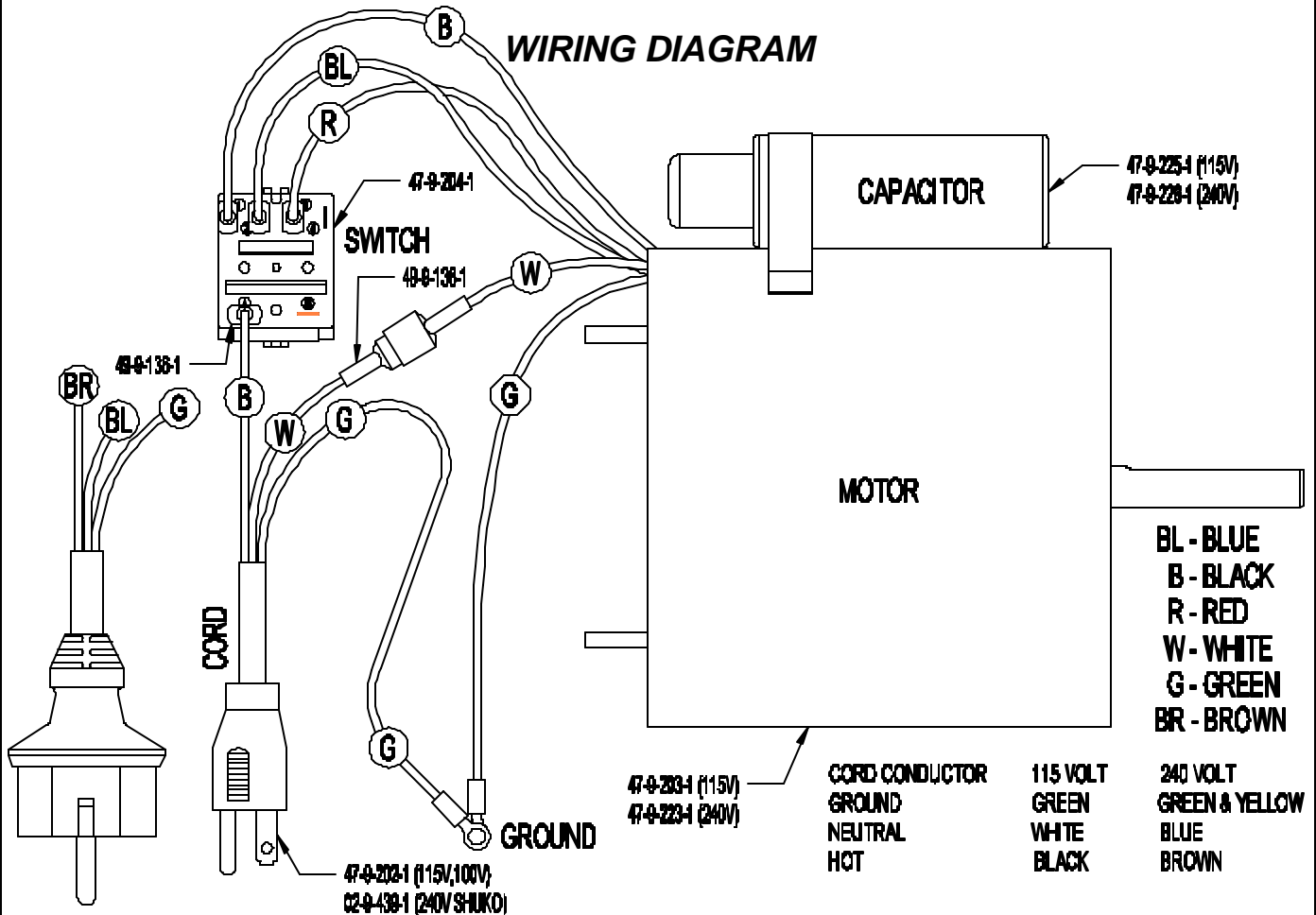
1. Flat for floor and carpet
2. 45° for walls and furniture.
3. 90° for ceilings.

## FAN SPEEDS

1. LOW: To dry waxes and sealers on bare floors. Use the 45° position.
2. MEDIUM: To dry medium size areas - avoids moving papers on desks.
3. HIGH: To dry large open areas.

## TO SPEED THE DRYING OF STRETCHED WALL TO WALL CARPET

- 1 (All furniture should be removed from room). Peel back one corner of carpet. A scratch awl or any pointed instrument will make this easier.
2. Position fan so that the exhaust snout is under the carpeting pointing toward the center of the room. Be sure the intake screens are not blocked. Secure carpet to Aero Plus with optional carpet clamp.
3. Plug into a grounded outlet and turn switch to desired speed. Fan forces air under and through the carpet to speed drying time. Carpet will billow in the center of the room.
4. Remove fan when dry and stretch carpet back into place.



## NSS® Enterprises, Inc.

3115 Frenchmens Road, Toledo, Ohio 43607  
 PHONE (419) 531-3761 FAX (419) 531-3761

**NSS® Enterprises, Inc. European Distribution Centre**  
 Unit II, Pinfold Trading Estate \* 55 Nottingham Road  
 STAPLEFORD, NOTTINGHAM NG9 8AD ENGLAND U.K.  
 PHONE: (44) 0115 939 1568 \* FAX: (44) 0115 949 0615

