

# WHIRLAMATIC MODEL 1120E, 1120E-5

THIS PARTS LIST IS FOR MODEL  
1120E'S AFTER SERIAL NUMBER 047  
363 AND MODEL 1120E-5'S AFTER  
SERIAL NUMBER 056 135

# PARTS LIST



**ADVANCE**  
**MACHINE COMPANY**

INTERNATIONAL HEADQUARTERS, Spring Park, Minnesota 55384-0275

EUROPE, 4 Rue Jean Engling, L-1466 Luxembourg

CANADA, 1295 Crestlawn Drive, Mississauga, Ontario L4W 1A9

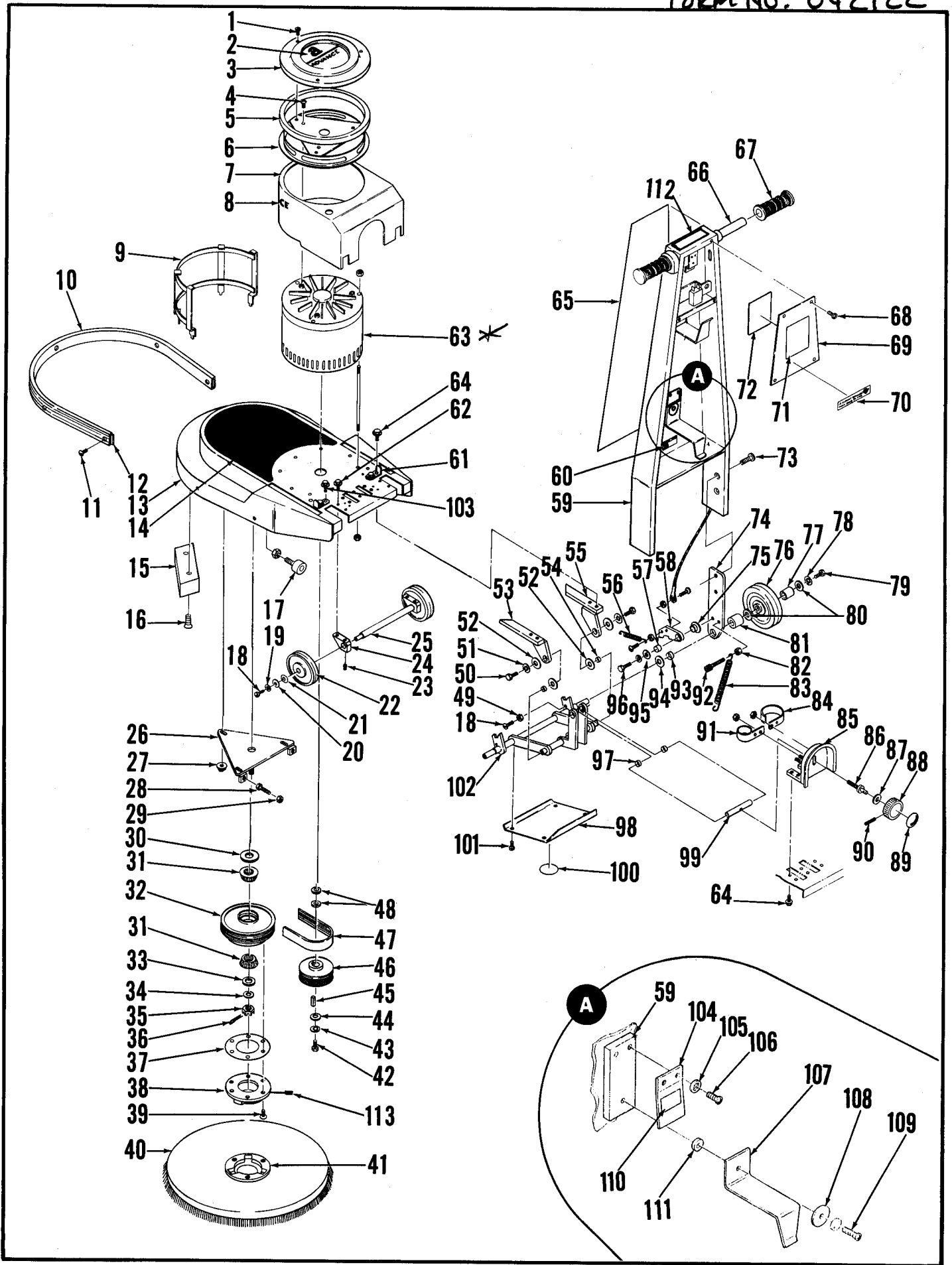
© 1985 Advance Machine Co.

FORM NO. 042 122 3/85



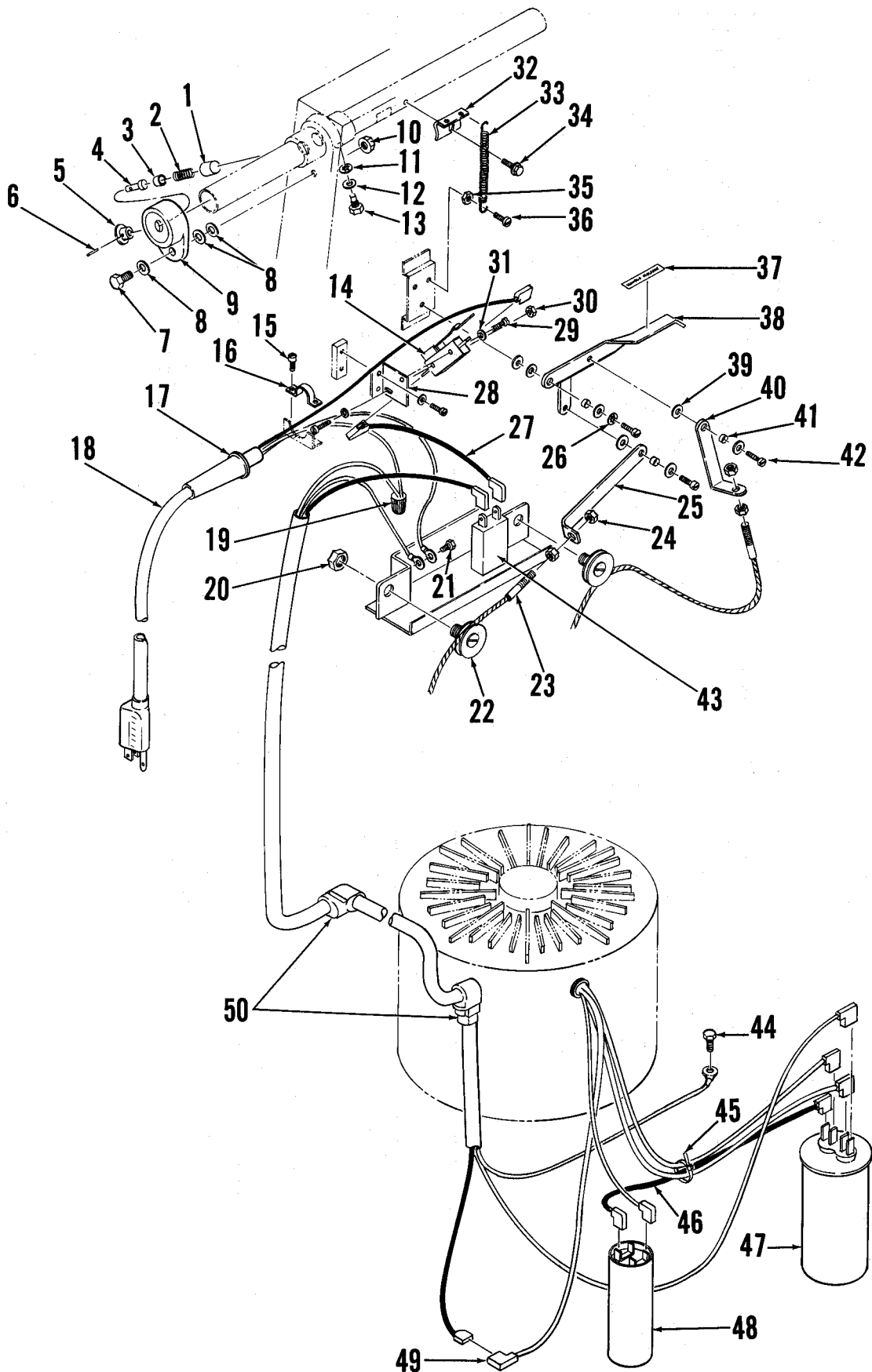
# Index for Form Number 042122

<b>Description</b>	<b>Location</b>	<b>page</b>
Base & Handle	E8	1
Wiring Diagram	E10	3



## BASE AND HANDLE ASSEMBLY

Item	Part No.	Qty	Description	Item	Part No.	Qty	Description
1	325124	3	#10-24 x 3/8 Screw	58	185231	2	Catch
2	015326	1	Decal, Advance	59	185201	1	Handle
3	185438	1	Shroud Cover	60	015324	1	Nameplate
4		3	5/16-18 x 5/8 Screw	61	185410	5	Clip
5	180032	1	Filter	62		2	#10-24 x 5/8 Screw
6	185430	1	Filter Bracket	63	185022	1	Motor 115V REF TSB #550
7	185426	1	Shroud		185027	1	Motor 230V
8	014944	1	Decal, Advance	64		14	1/4-20 x 5/8 Screw
9	185436	1	Shroud Support	65	018500	1	Decal, Handle
10	185146	1	Bumper	66	185222	1	Handle Tube
11		5	#10-24 x 3/8 Screw	67	388545	2	Handle Grip
12	185149	1	Bumper Strap	68		4	#8-32 x 3/8 Screw
13	018503	1	Decal, Base	69	185225	1	Plate, Cover
14	185101	1	Base	70	018509	1	Decal, Circuit Breaker
15	185154	2	Weight	71	014828	1	Decal, Warning
16		4	1/2-20 x 1/2 Screw	72	018512	1	Decal, Wiring
17	386316	4	Stop, Bumper	73		4	5/16-18 x 5/8 Screw
18		6	#10-24 x 5/8 Screw	74	185230	1	Plate
19		2	#10 Shakeproof Washer	75	185263	2	Flange Bearing
20	180092	2	Washer	76	185158	2	Wheel
21	163767	2	Washer	77	185156	2	Sleeve
22	228102	2	Wheel	78		2	Shakeproof Washer
23		2	1/4-20 x 3/8 Set Screw	79		2	3/8-16 x 2 Screw
24	185334	2	Pillow Block	80	385358	4	Washer
25	185328	1	Axle	81	449228	2	Locking Collar
26	185041	1	Plate	82		2	5/16-18 Nut
27		3	5/16-18 Nut	83	382000	4	Spring
28		2	1/4-20 x 1-1/4 Screw	84	185458	1	Capacitor Clamp 115V
29		2	1/4-20 Nut		185450	1	Capacitor Clamp 230V
30	171078	1	Shaft Seal	85	185413	1	Bracket
31	378267	2	Bearing	86	185331	1	Adjustment Shaft
32	171363	1	Pulley	87	151041	1	Spring Washer
33	163449	1	Washer	88	475480	1	Knob
34		1	9/16 Washer	89	018506	1	Decal, Pad Pressure
35	158313	1	9/16-18 Slotted Nut	90		1	#10-24 x 1/2 Set Screw
36		1	Cotter Key	91	185428	1	Capacitor Clamp
37	158257	1	Gasket	92		2	5/16-18 x 1-1/2 Screw
38	185059	1	Drive Cap	93	478781	2	Sleeve Bearing
39		6	#12-24 x 5/8 Screw	94		2	5/8 Washer
40	171340	1	Pad Holder 20"	95	152781	2	Washer
41	163341	1	Clutch Plate	96		2	5/16-18 x 5/8 Screw
42		1	5/16-24 x 5/8 Screw	97	370878	2	Sleeve Bearing
43		3	5/16 Shakeproof Washer	98	185346	1	Cover Plate
44	180200	1	Washer	99	185337	1	Shaft
45	158135	1	Key	100	030080	2	Decal, Hands Clear
46	185442	1	Sheave 115V	101		4	#10-24 x 1/4 Screw
	185444	1	Sheave 230V	102	185352	1	Axle
47	759066	1	Belt 115V	103		2	#10-24 x 5/8 Screw
	185065	1	Belt 230V	104	387680	1	Spring
48	362883	2	Spring Washer	105		2	#10 Shakeproof Washer
49		12	#10-24 Nut	106		2	#10-24 x 1/4 Screw
50		2	1/4-20 x 1 Screw	107	185267	1	Cord Hook
51		2	1/4 Shakeproof Washer	108	387684	1	Washer
52		4	1/4 Washer	109		1	#10-24 x 1/2 Screw
53	185322	1	Left Bracket	110	018336	1	Decal, Cord Hook
54	366633	2	Sleeve Bearing	111	387678	1	Bushing
55	185325	1	Right Bracket	112	014924	1	Decal, Warning
56	328790	2	Spring	113	185061	3	Set Screw
57	320595	2	Bushing				



# WIRING & RELATED COMPONENTS

ITEM	PART NO.	QTY.	DESCRIPTION
1	172 201	1	BUSHING
2	201 448	1	SPRING
3	172 266	1	PLUNGER
4	172 217	1	PIN
5	201 405	1	KNOB
6	201 472	1	PIN, SPRING
7		1	SCREW, 1/4-20 X 5/8
8		3	WASHER, FLAT 1/4
9	172 209	1	COLLAR
10		1	WHIZ NUT, 1/4-20
11		1	WASHER, SHAKEPROOF
12		1	WASHER, FLAT 5/16
13	234 079	1	SCREW
14	388 019	1	SWITCH
15		4	SCREW, #8-32 X 5/8
16		1	CLAMP, STRAIN RELIEF
17	162 736	1	STRAIN RELIEF (115V)
18	330 871	1	CORD SET 115V
19	321 737	1	WIRE NUT (115V)
20		2	NUT, HEX 7/16-14
21		2	SCREW, #10-24 X 1/2
22	159 749	2	PULLEY, IDLER
23	384 909	2	WIRE ROPE ASSEMBLY
24		4	NUT, HEX 1/4-20
25	185 234	1	LINK, CABLE
26		1	WASHER, SHAKEPROOF
27	330 876	2	WIRE ASSEMBLY
28	185 249	1	PLATE, SWITCH
29		2	SCREW, #4-40 X 7/8
30		1	NUT, HEX #4
31		2	WASHER, FLAT #4
31		2	WASHER, FLAT #4
32	395 364	1	TAB, SPRING MOUNTING
33	445 177	2	SPRING
34		1	SCREW, #8-32 X 1/2
35		2	NUT, HEX #10-24
36		2	SCREW, #10-24 X 3/4
37	014 856	1	DECAL, HANDLE LEVER
38	185 240	1	LEVER, HANDLE
39		7	WASHER, FLAT #10
40	185 237	1	LINK, CABLE
41	151 092	3	SPACER
42		3	SCREW #10-24 X 3/4
43	454 538	1	CIRCUIT BREAKER 115V
	387 316	1	CIRCUIT BREAKER 230V
44		2	SCREW, #10-24 X 1/2
45	478 246	2	CABLE TIE
46	330 876	2	WIRE ASSEMBLY
47	185 418	1	CAPACITOR (230V)
	168 440	1	CAPACITOR (115V)
48	185 424	1	CAPACITOR (230V)
	185 446	1	CAPACITOR (115V)
49	244 827	1	FLAG RECEPTACLE
50	185 504	2	STRAIN RELIEF