

ScrubMaster 20B and FloorMaster 18B

Parts List & Service Manual

The contents of this manual are based on the latest product information available at the time of publication. Pacific Steamex reserves the right to make changes or improvements to its machines without notice.

For new books write to:

Pacific
2259 S. Sheridan
Muskegon, MI 49442-6252

Carefully inspect all components to ensure that there is no concealed freight damage. If such damage is discovered, file a "CONCEALED DAMAGE REPORT" immediately with the delivering carrier.

FOR YOUR CONVENIENCE, RECORD THE FOLLOWING IMPORTANT INFORMATION:

MODEL _____

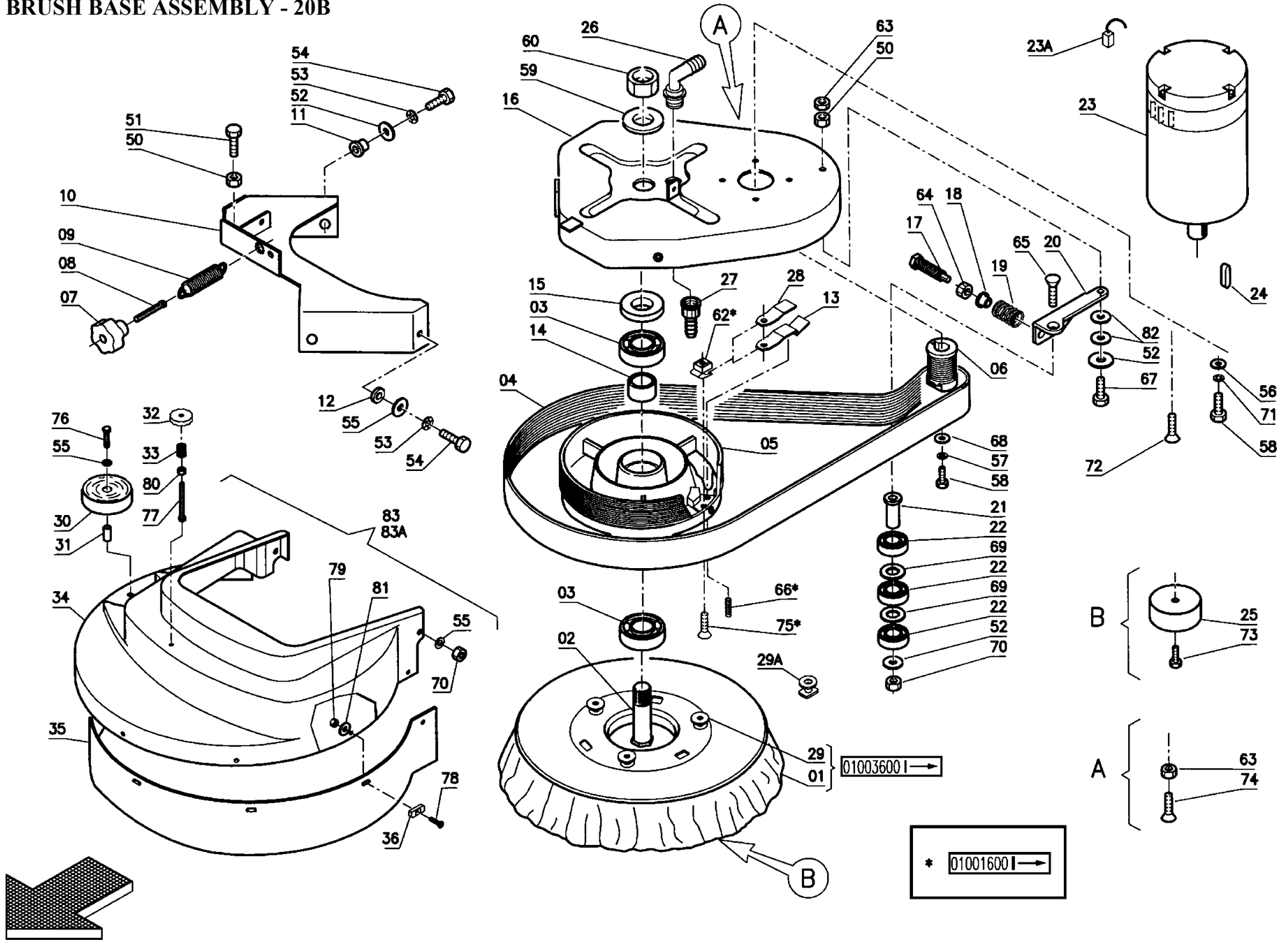
SERIAL NUMBER _____

PART NUMBER _____

DATE PURCHASED _____

TABLE OF CONTENTS

MACHINE DRAWINGS & PARTS LISTS	PAGES 2 - 23
20B ELECTRICAL SCHEMATICS & PARTS LISTS	PAGES 24 - 27
18B ELECTRICAL SCHEMATICS & PARTS LISTS	PAGES 28 - 31
INSPECTIONS & ADJUSTMENTS	PAGES 32 - 36
OILS & GREASES	PAGE 37
WARRANTY	PAGE 38



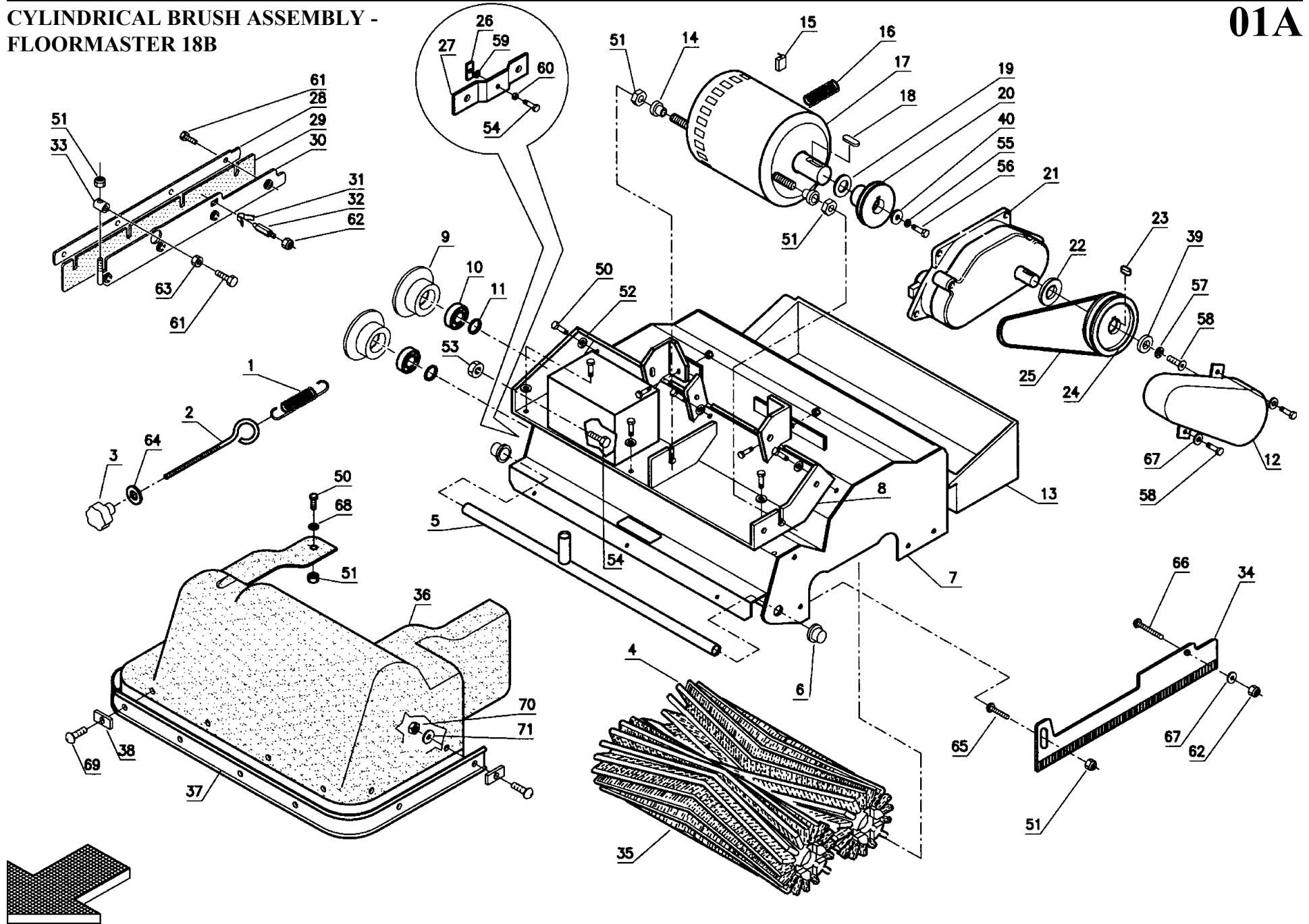
DRAWING 01 - 20B

Item	Part Number	Description	Qty.
1	880960	Brush (20B)	
	885960	Pad Driver (20B)	
	884541	Pad Holder, Top & Bottom, Yellow	
2	887740	Shaft	1
3	902031	Bearing	2
4	903016	Belt	1
5	886940	Pulley	1
6	69420260	Motor Pulley	1
7	885046	Knob	1
8	880540	Adjuster	1
9	888340	Spring	1
10	42301020	Support	1
11	881140	Bushing	2
12	69102050	Bushing	2
13	888341	Spring	2
14	888241	Spacer	1
15	888240	Spacer	1
16	880960	Brush Base	1
17	880541	Adjuster	1
18	881141	Bushing	1
19	888342	Spring	1
20	42301010	Support	1
21	881142	Bushing	1
22	902032	Bearing	3
23	68220370	Motor	1
23A	880952	Carbon Brush Motor	4
24	70405041	Key	1
25	980620	Special Washer	1
26	883346	Connector	1
27	883348	Connector	1
28	69230470	Spring	3
29	885146	Lugs, rectangular	-
	42001170	Lugs, round head with rectangular base to convert old pad driver to round lugs	
	022.111	Lugs, round	3
	70970603	Screws for Lugs	3
*30	67020030	Bumper Wheel	1
31	69102110	Bushing	1
*32	42346050	Handwheel	1

Item	Part Number	Description	Qty.
*33	888345	Spring	1
*34	42346040	Base Cover	1
*35	67623020	Splash Guard	1
36	882131	Clip Guard	8
50	924035	Nut	
51	964085	Screw	
52	980044	Washer	
53	980069	Lock Washer	
54	964086	Screw	
*55	980039	Washer	
56	980042	Washer	
57	980045	Lock Washer	
58	964116	Screw	
59	980050	Washer	
60	924040	Nut	
62	71050602	Nut	1
63	71010809	Nut	
64	924039	Nut	
65	964089	Screw	
66	70960601	Dowel	1
67	964091	Screw	
68	71106006	Washer	
69	980052	Washer Brass	
*70	924033	Lock Nut	
71	71106009	Lock Washer	
72	70980602	Screw	
73	964094	Screw	
74	964093	Screw	
75	70980603	Screw	
76	964106	Screw	
*77	70910626	Screw	
*78	964099	Screw	
79	924029	Lock Nut	
80	71010603	Nut	
81	980057	Washer	
82	980051	Cupped Washer	
*	A4623003	Base Cover Assembly	

CYLINDRICAL BRUSH ASSEMBLY -
FLOORMASTER 18B

01A



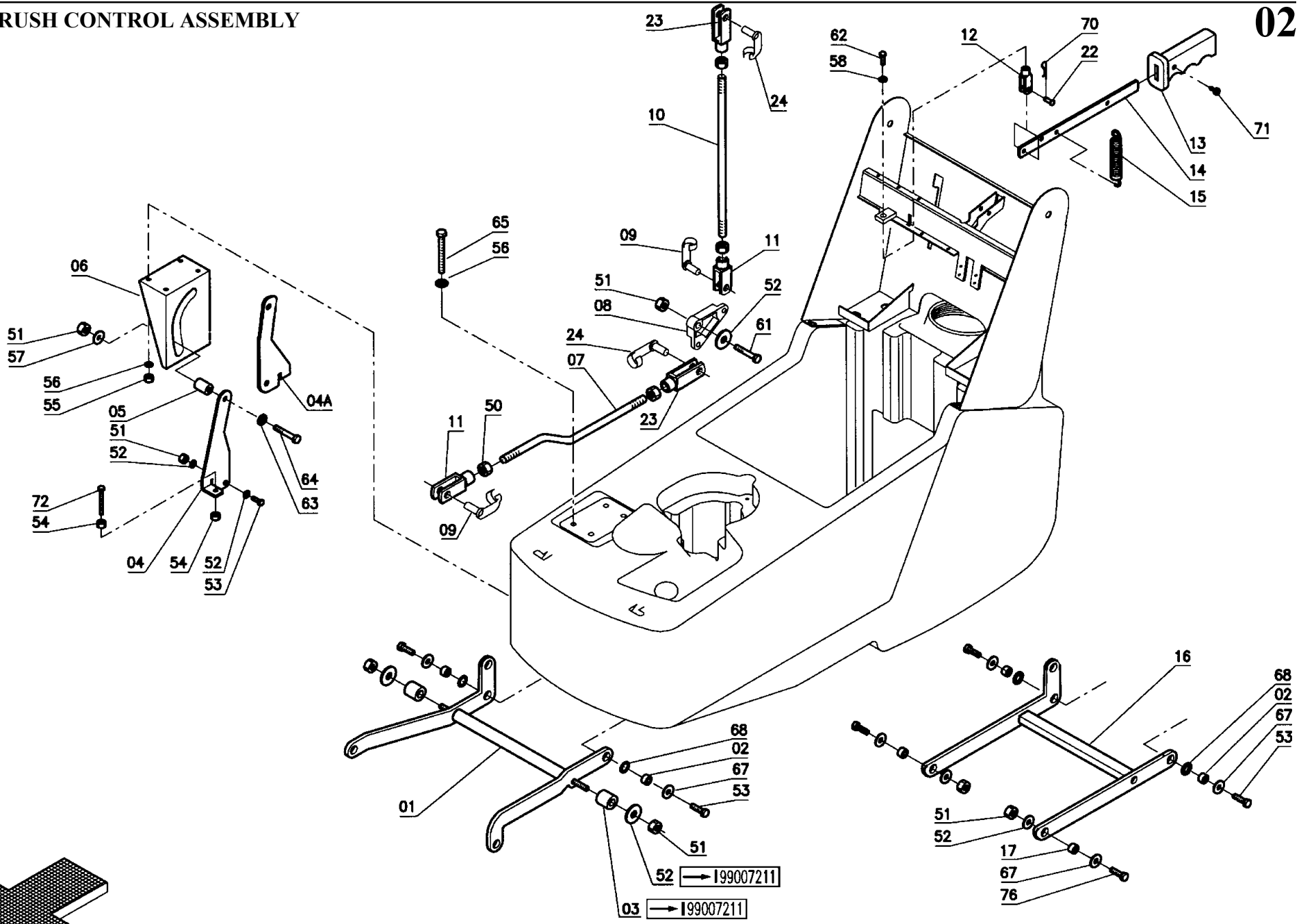
DRAWING 01A - FloorMaster 18B

Item	Part Number	Description	Qty.
1	69220160	Spring	1
2	42307150	Hook	1
3	885046	Handwheel	1
4	66823060	Rear Brush	1
5	42307070	Pipe	1
6	42307080	Cover	2
7	42307130	Tunnel	1
8	42307140	Motor Support	1
9	888530	Right Support	2
10	902028	Bearing	2
11	70720281	Oil Seal	2
12	42207060	Cover	1
13	42307110	Hopper	1
14	42207080	Bushing	2
15	71706092	Carbon Brush Motor	4
16	69210490	Spring	1
17	68220380	Motor	1
18	885030	Key	1
19	69021070	Spacer	1
20	69410180	Motor Pulley	1
21	883530	Reduction Gear Assembly	1
22	888230	Spacer	1
23	885031	Key	1
24	886931	Pulley	1
25	70110014	Belt	1
26	924024	Wing Nut	1
27	885132	Bar	1
28	887231	Blade	1
29	887530	Side Rubber Right	1
30	881332	Side Bar Right	1
31	884530	Coupler	1

Item	Part Number	Description	Qty.
32	884531	Hook Head	1
33	882432	Coupling	1
34	881334	Side Bar Left	1
35	66823050	Front Brush	1
36	42346060	Base Cover	1
37	42346070	Bumper	1
38	882131	Clip Guard	6
39	980038	Washer	1
50	964107	Screw	
51	924026	Lock Nut	
52	980042	Washer	
53	924035	Nut	
54	964060	Screw	
55	71106009	Lock Washer	
56	964116	Screw	
57	71010506	Lock Washer	
58	964082	Screw	
59	980069	Lock Washer	
60	924025	Nut	
61	964075	Screw	
62	924032	Lock Nut	
63	924034	Nut	
64	980040	Washer	
65	964061	Screw	
66	964077	Screw	
67	71105003	Washer	
68	980042	Washer	
69	964099	Screw	
70	924029	Lock Nut	
71	980057	Washer	

BRUSH CONTROL ASSEMBLY

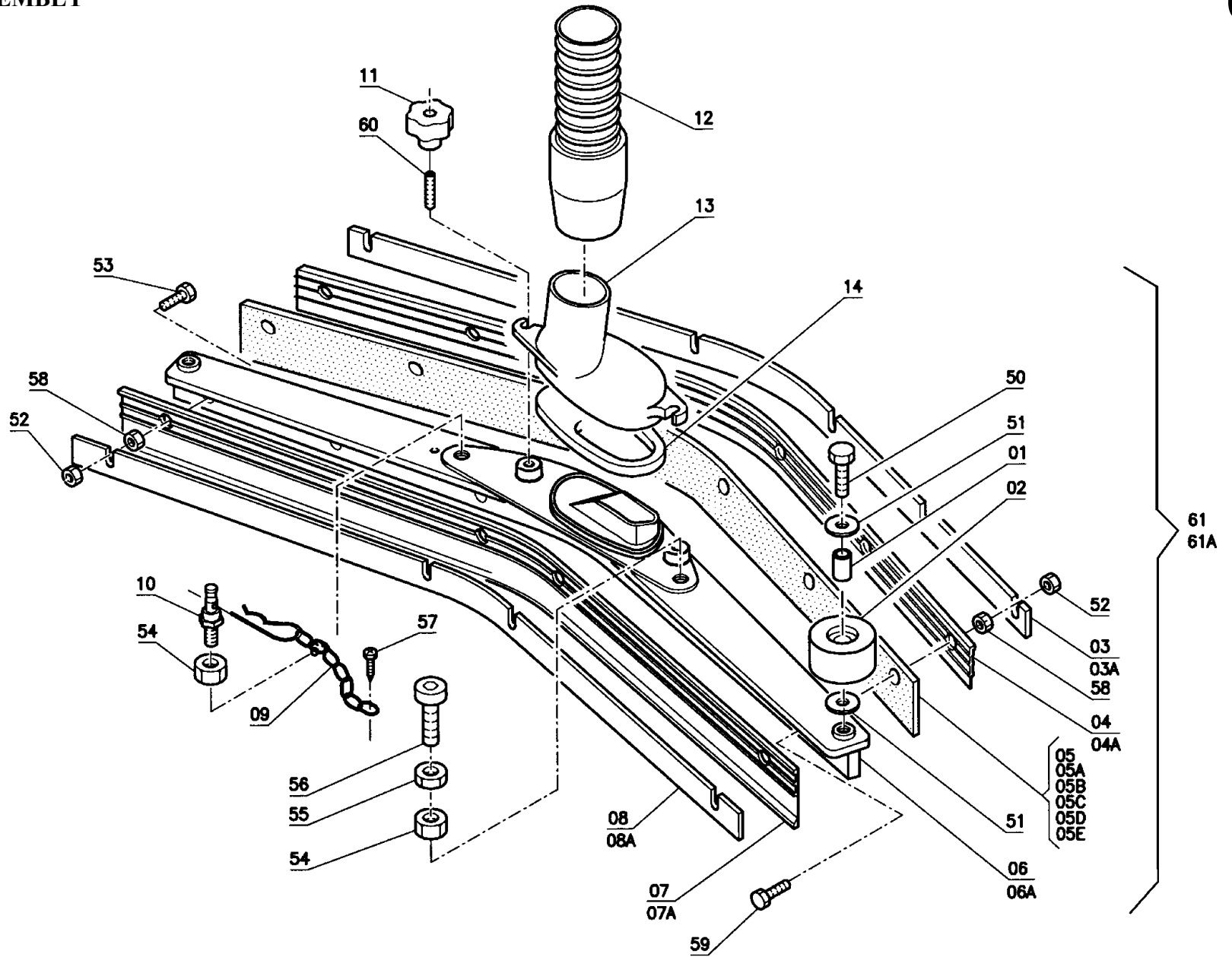
02



DRAWING 02

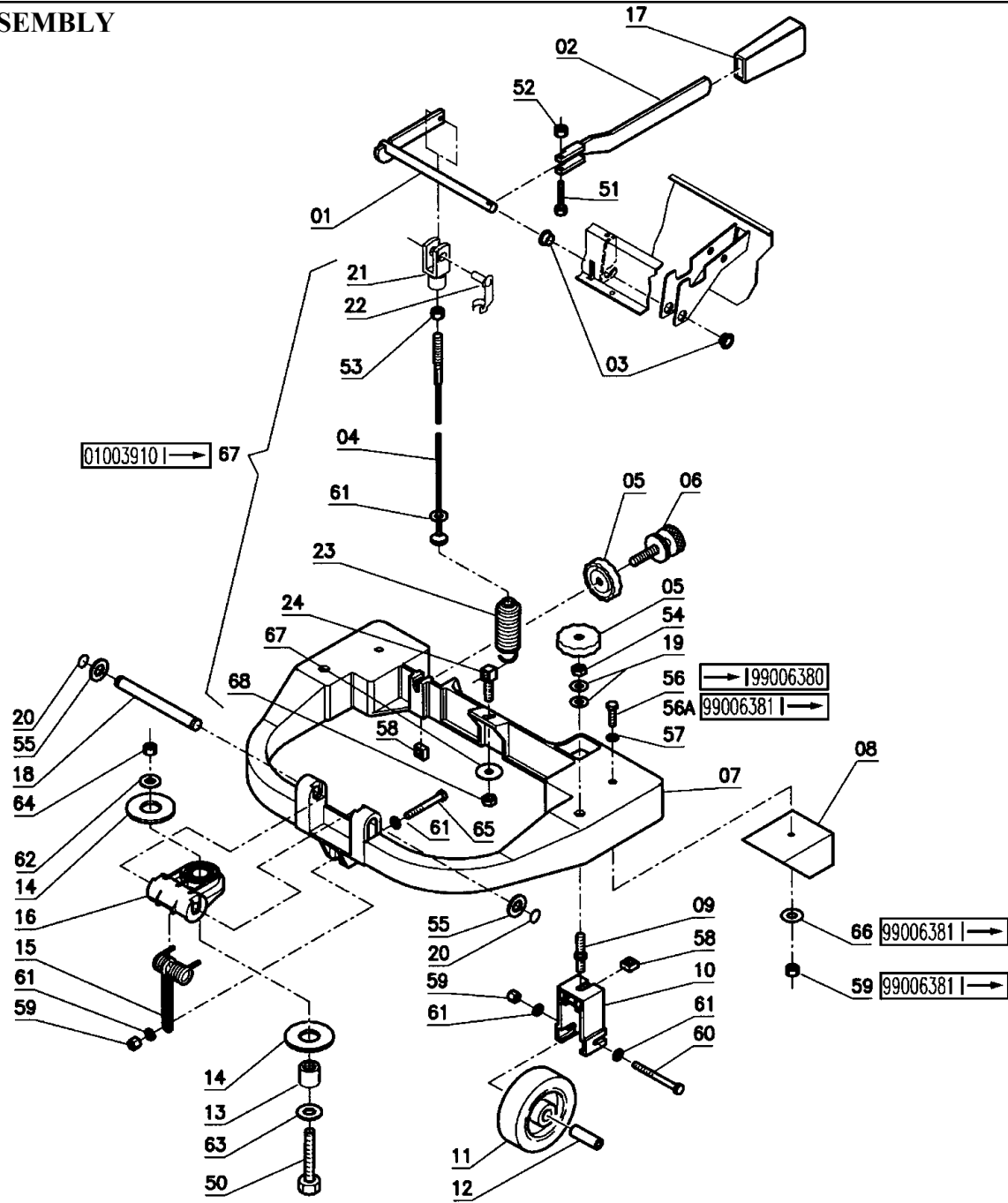
Item	Part Number	Description	Qty.
1	42303120	Arm	1
2	69122030	Bushing	2
3	881153	Bushing	2
4	42303070	Support - 20B	1
4A	42307040	Support - FloorMaster	1
5	42303080	Roller	1
6	42303030	Support	1
7	42303140	Tie Rod	1
8	40228020	Rocker Arm	1
9	74620001	Pin	3
10	42303130	Tie Rod	1
11	74610001	Fork	3
12	74610004	Fork	1
13	74100007	Knob	1
14	42303150	Lever	1
15	888336	Spring	1
16	42307120	Lever	1
17	69102050	Bushing	2
22	74620007	Pin	1
23	74610005	Fork	1
24	74620006	Pin	1
50	71010809	Nut	
51	924033	Lock Nut	
52	980039	Washer	

Item	Part Number	Description	Qty.
53	964090	Screw	
54	924035	Nut	
55	924026	Lock Nut	
56	980042	Washer	
57	980070	Washer	
58	980040	Washer	
59	964116	Screw	
60	980065	Washer	
61	70911024	Screw	
63	980069	Lock Washer	
64	964106	Screw	
65	70910620	Screw	
66	70910601	Screw	
67	980044	Washer	
68	980053	Lock Washer	
70	71600006	Clip	
71	70944801	Screw	
72	70910828	Screw	
73	964103	Screw	
74	70910626	Screw	
75	964099	Screw	
76	964085	Screw	
78	924029	Lock Nut	
79	980057	Washer	



DRAWING 03

Item	Part Number	Description	Qty.
1	881145	Bushing	2
2	889742	Bumper	2
3	68813020	Blade	1
4	880750	Rear Rubber	1
5A	880751	Central Rubber,33 Shore,Smooth Floor, Red,31"	1
5B	880752	Central Rubber,40 Shore,Concrete Floor,Beige,31"	1
5C	67713060	Central Rubber, Oil Resistant	
6	69623010	Squeegee Body	1
7	880753	Front Rubber, Clear	1
8	68813010	Blade	1
9	882444	Chain with Clip	1
10	42311010	Stud Bolt	1
11	74006010	Knob	2
12	67512620	Vacuum Hose	1
13	880240	Opening	1
14	67406100	Gasket	1
50	964085	Screw	
51	980039	Washer	
52	924050	Lock Nut	
53	964109	Screw	
54	924061	Nut	
55	924053	Nut Low	
56	70931005	Screw	
57	964126	Screw	
58	924054	Nut	
59	964110	Screw	
60	925606	Dowel	
	A9623001	Squeegee Assembly, includes all items above, except Item 12, the vacuum hose.	

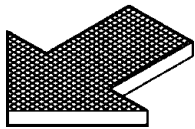
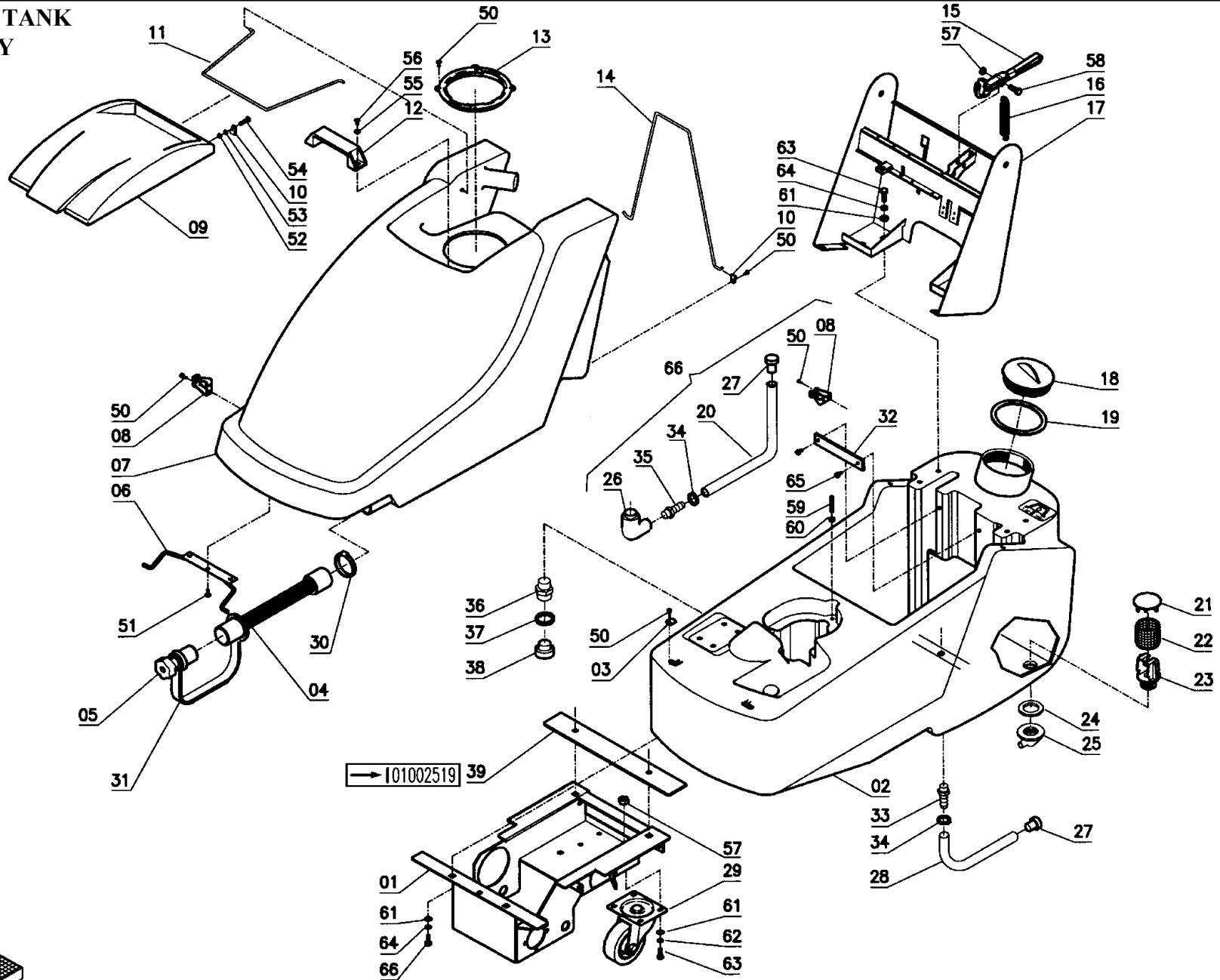


DRAWING 04

Item	Part Number	Description	Qty.
1	42312050	Lever	1
2	42312070	Lever	1
3	69122010	Bushing	2
4	74803062	Cable	1
5	924049	Handwheel	3
6	880551	Adjuster	2
7	42312040	Arm	1
8	42312080	Ballast	2
9	42312060	Pin	2
10	42312030	Support	2
11	67010050	Wheel	1
12	69122020	Bushing	2
13	69122040	Bushing	1
14	41312080	Special Washer	2
15	69230020	Spring	1
16	42312010	Coupling	1
17	74100005	Knob	1
18	42312020	Pin	1
19	980051	Cupped Washer	4
20	70220003	Seeger Ring	2
21	74610007	Fork	1
22	74620008	Clip	1

Item	Part Number	Description	Qty.
23	69220190	Spring	1
24	42312100	Coupling	1
50	70911009	Screw	
51	70910415	Screw	
52	924029	Lock Nut	
53	924060	Nut Low	
54	71010809	Nut	
55	980046	Washer	
56	70910621	Screw	
57	71106009	Lock Washer	
58	71010810	Special Nut	
59	924026	Lock Nut	
60	70910627	Screw	
61	980042	Washer	
62	980064	Washer	
63	71110011	Lock Washer	
64	924055	Screw	
65	70910621	Screw	
66	980065	Washer	
68	924050	Lock Nut	
69	A2312001	Kit - Squeegee Cable Lift	

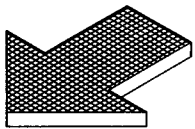
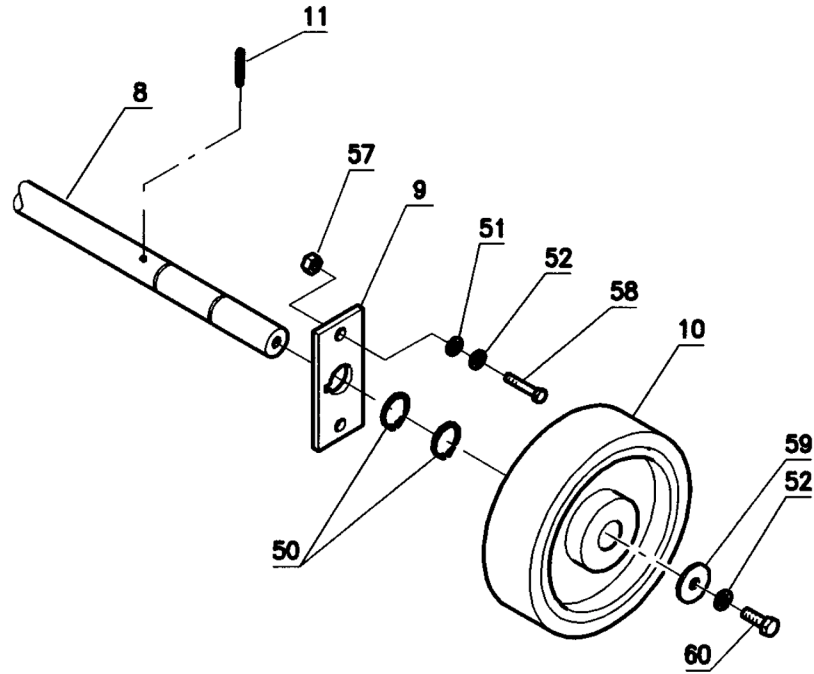
FRAME & TANK
ASSEMBLY



DRAWING 05

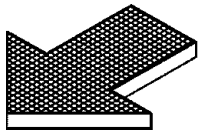
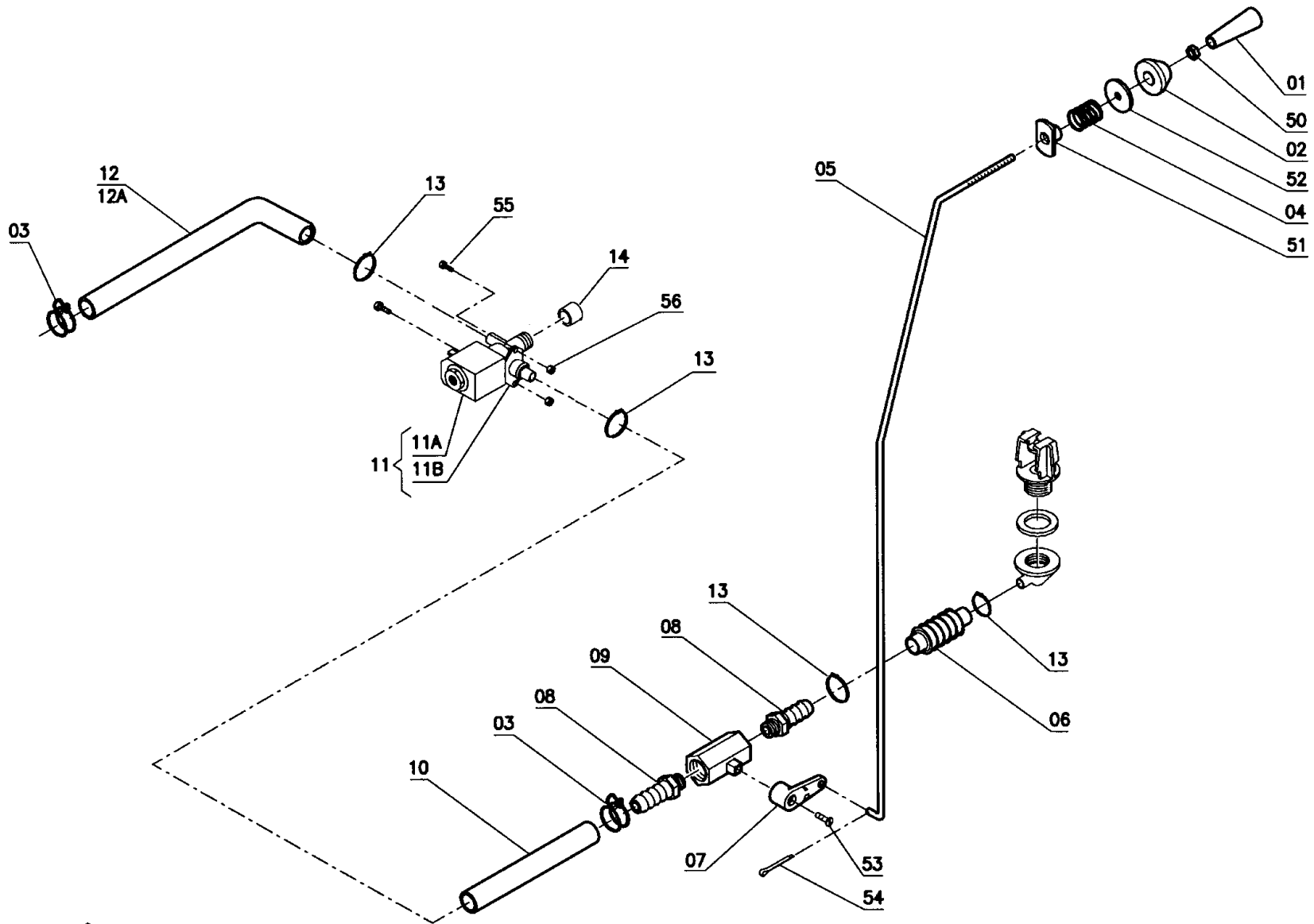
Item	Part Number	Description	Qty.
1	69923100	Frame	1
2	69723030	Solution Tank	1
*3	40236250	Plaque	2
4	67512580	Drain Hose	1
5	886842	Plug, Drain Hose	1
*6	42336080	Hinge	1
7	69723020	Recovery Tank	1
8	882440	Hook	1
9	42346020	Cover	1
*10	72902008	Cable Fastener	4
11	42346010	Hinge	1
12	883930	Handle	1
13	42036030	Filter Holder	1
*14	42336030	Prop	1
15	885143	Lever	1
16	888344	Spring	1
17	69923300	Frame	1
18	886844	Cover	1
19	883444	Gasket	1
20	67523260	Pipe	1
21	882331	Cover	1
22	883331	Filter	1
23	883332	Base	1
24	70800003	Gasket	1
25	74520025	Ring Nut	1
26	74520001	Elbow	1
27	886852	Cap	2
28	67521670	Pipe	1
29	67050120	Castor Wheel	1

Item	Part Number	Description	Qty.
30	882041	Clamp	1
31	42341010	Clamp	1
32	42336090	Guide	1
33	74540002	Connector	1
34	74220061	Clamp	1
35	74540023	Connector	1
36	74560009	Fitting, 1/2" Pipe Thread	1
37	67400640	Gasket	1
38	74550009	Cap	1
39	42316010	Support Bracket	1
*50	70973902	Screw	
*51	70945501	Screw	
52	924029	Lock Nut	
53	71104002	Washer	
54	70950401	Screw	
55	980066	Washer	
56	70944807	Screw	
57	924033	Lock Nut	
58	964103	Screw	
59	925606	Dowel	
60	924048	Nut	
61	980039	Washer	
62	980053	Lock Washer	
63	70930808	Screw	
64	980069	Lock Washer	
65	70944203	Screw	
66	A3623001	Drain Hose Kit (Optional)	
*	A4623001	Prop & Hinge Assembly	



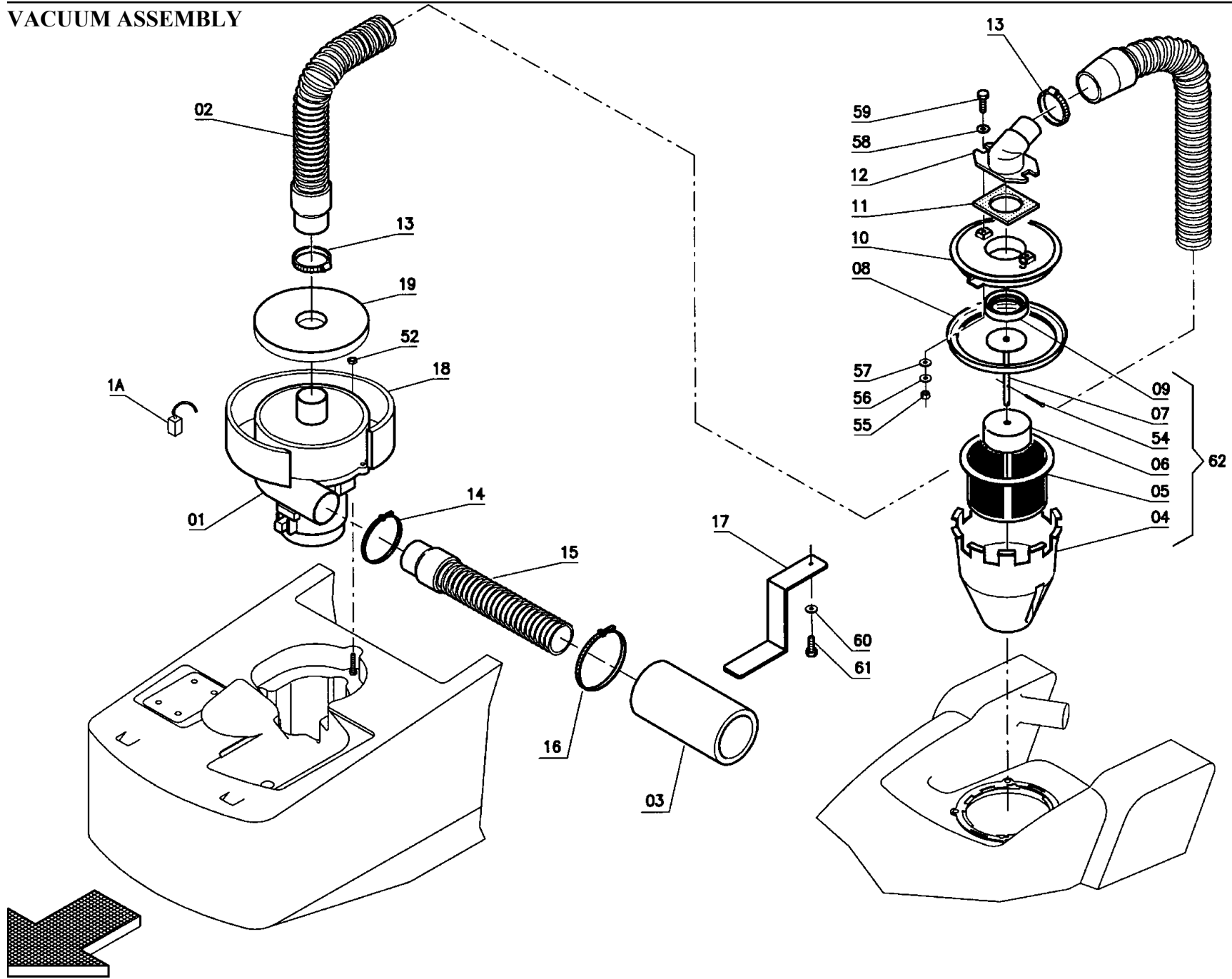
DRAWING 06

Item	Part Number	Description	Qty.
8	42317020	Shaft	1
9	42317030	Support	2
10	67010300	Wheel	2
11	71440001	Spring Pin	1
50	70220016	Seeger Ring	4
51	980042	Washer	
52	980045	Lock Washer	
57	924026	Lock Nut	
58	964116	Screw	
59	980065	Washer	
60	964107	Screw	



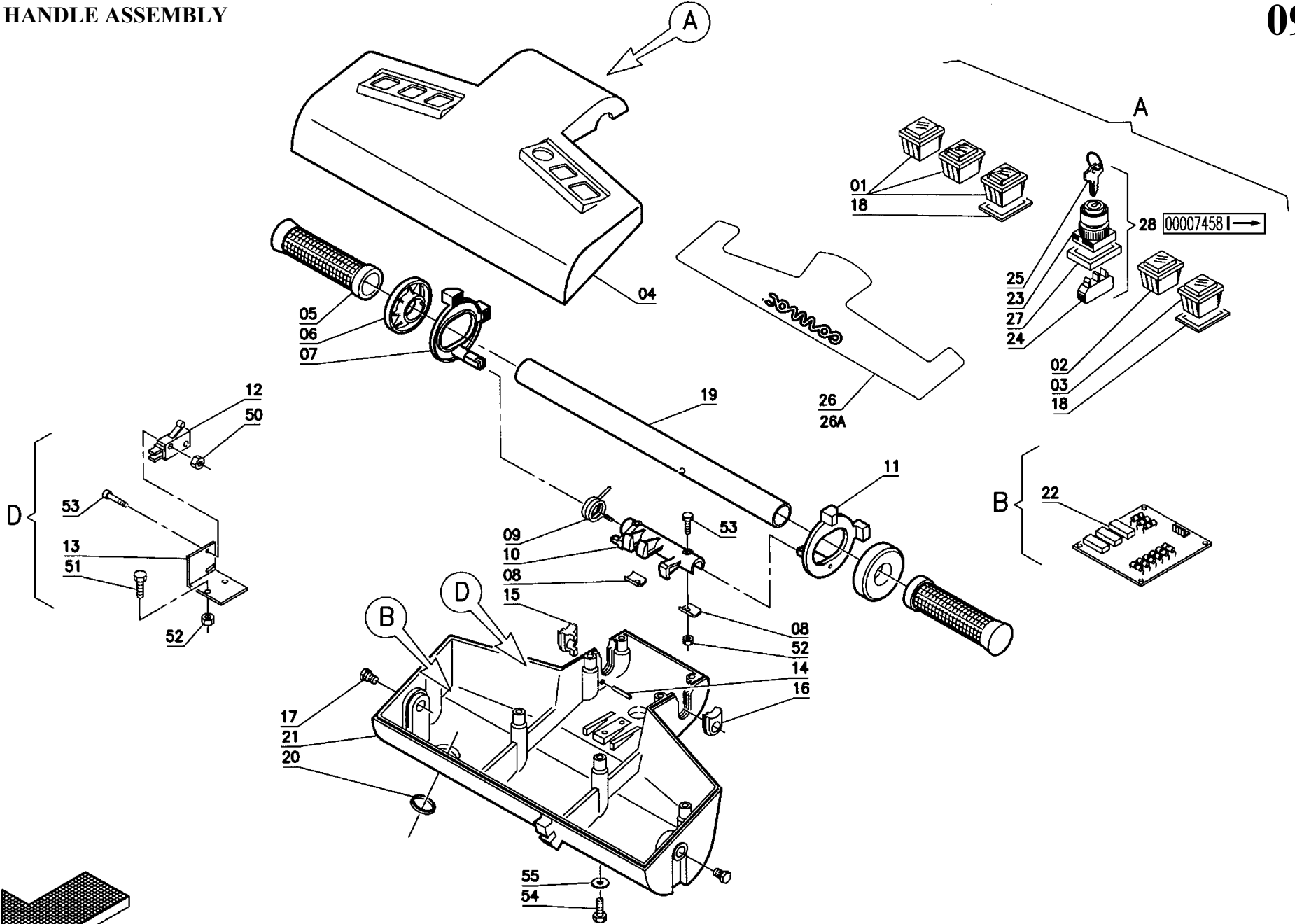
DRAWING 07

Item	Part Number	Description	Qty.
1	885044	Knob	1
2	980621	Special Washer	1
3	882051	Clamp	2
4	888345	Spring	1
5	42337010	Rod	1
6	40237100	Bellows	1
7	42337020	Lever	1
8	883347	Connector	2
9	889440	Cock	1
10	67523040	Pipe	1
11	68532050	Solenoid Valve Complete	1
11A	68510090	Body, Solenoid Valve	
11B	68522070	Coil	
12	67523050	Pipe - 20B	1
12A	67523330	Pipe - FloorMaster 18B	1
13	74210001	Clamp	4
14	74550010	Cap	1
50	924046	Nut	
51	924047	Nut	
52	980061	Washer	
53	70950401	Screw	
54	925609	Split Pin	
55	70910401	Screw	
56	924029	Lock Nut	



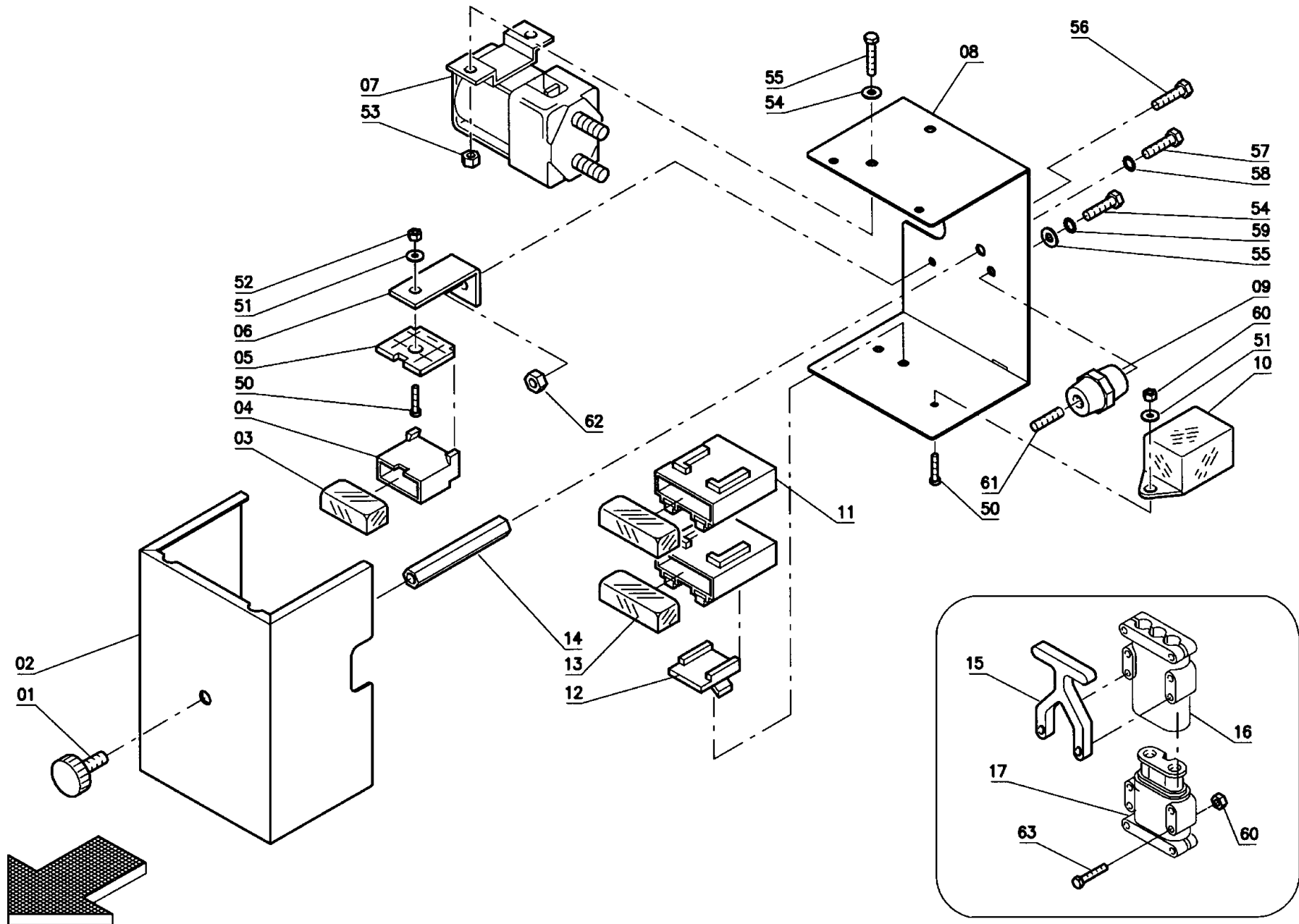
DRAWING 08

Item	Part Number	Description	Qty.
1	68120460	Vacuum Motor	1
1A	880951	Carbon Brush Motor	2
2	67512630	Vacuum Hose	1
3	67101390	Sound Deadening Hose	1
4	888551	Protection	1
5	883343	Filter	1
6	883344	Float	1
7	887440	Rod	1
8	883441	Gasket	1
9	883442	Gasket	1
10	886841	Cover	1
11	883446	Gasket	1
12	882442	Opening	1
13	882041	Clamp	1
14	74220059	Clamp	1
15	67512050	Pipe	1
16	882030	Clamp	1
17	42341020	Support	1
18	67101090	Deading Hose	1
19	67101080	Deading Hose	1
52	924050	Lock Nut	
53	964104	Screw	
54	925603	Split Pin	
55	924045	Nut	
56	71104002	Washer	
57	980059	Washer	
58	980060	Washer	
59	964105	Screw	
60	980039	Washer	
61	70910803	Screw	
62	A6520001	Filter Assembly	



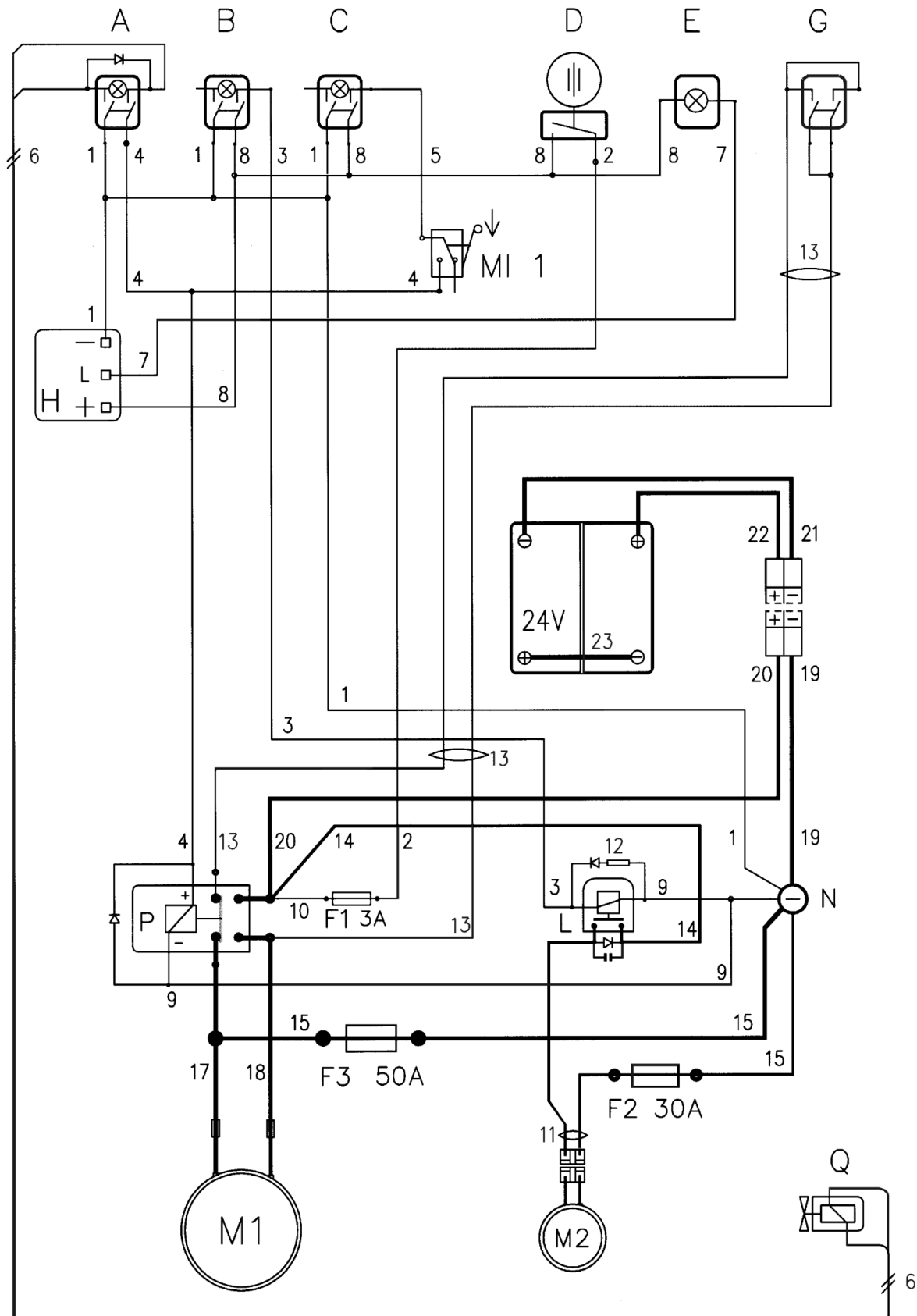
DRAWING 09A

Item	Part Number	Description	Qty.
1	72102009	Switch	3
2	911167	Signal Lamp Green	1
3	882343	Switch, Brush Release	1
4	882342	Handle Bar Cover	1
5	885042	Knob	2
6	980623	Special Washer	2
7	885141	Lever	1
8	882140	Clip Retaining	2
9	888343	Spring	1
10	41328010	Shaft	1
11	885142	Lever	1
12	911170	Microswitch	1
13	888548	Support	1
14	71404005	Spring Pin	1
15	887240	Retainer RH	1
16	887241	Retainer LH	1
17	42326010	Special Screw	2
18	883440	Gasket	5
19	886040	Pipe	1
20	883841	Fairlead	1
21	881341	Handle Bar Body	1
22	881358	Check Card Batterires	1
		KEYS PRIMARILY USED PRIOR TO 8/2000	
23	72199012	"Sw Body W/Ring, Support & Two Keys" NO COVER	1
24	72107004	Contact Only	1
25	72908010	Keys, Set of Two, NO COVER	1
		KEYS PRIMARILY USED BEGINNING 8/2000	
23A	72199015	"Sw Body W/Ring & Two Keys" GREY RUBBER COVER	1
24A	72107005	Contact Only	1
25A	72908017	Keys, Set of Two, GREY RUBBER COVER	1
26	66401341	Decal, 20B	1
26A	66401342	Decal, FloorMaster 18B	1
27	72199018	Flange/Support for Key with Switch Body	1
28	72199016	Switch Kit, Older Style-No cover	
28A	72199017	Switch Kit, Newer Style-Gray cover	1
50	924043	Lock Nut	
51	70910407	Screw	
52	924031	Nut	
53	964101	Screw	
54	964123	Screw	
55	980041	Lock Washer	



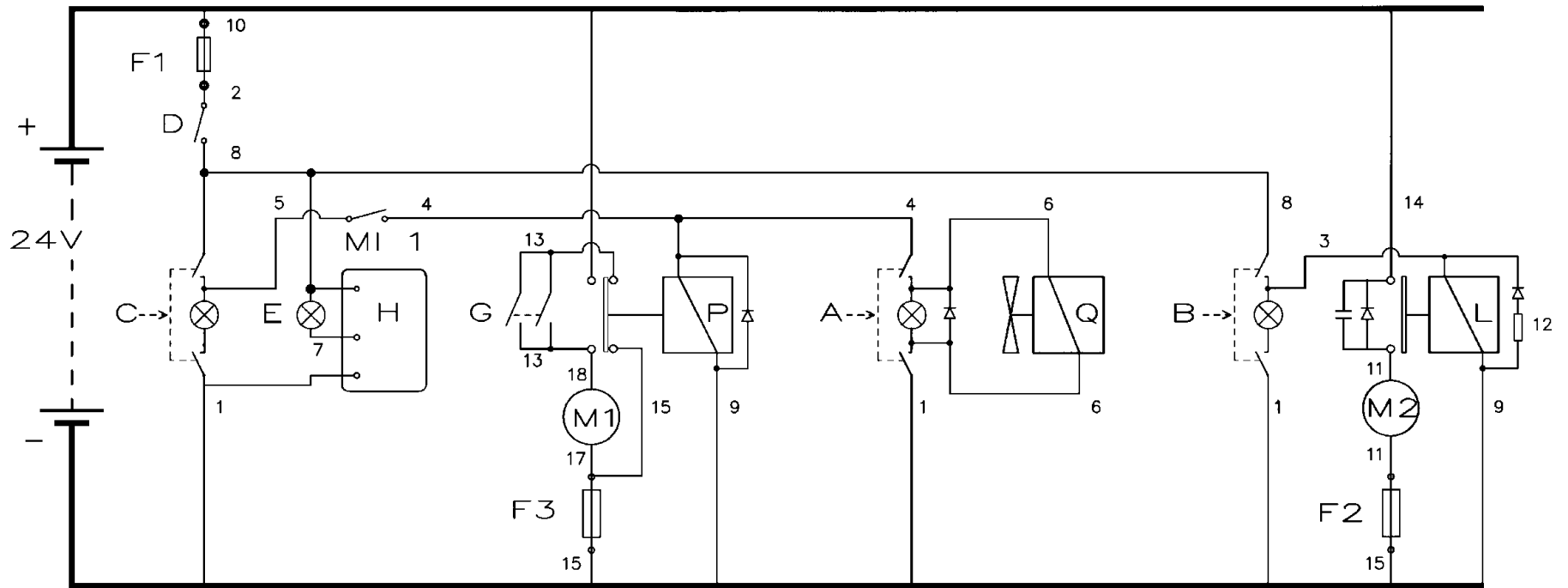
DRAWING 10

Item	Part Number	Description	Qty.
1	74006003	Knob	1
2	42351020	Cover	1
3	72916002	Cover	1
4	72400011	Fuseholder	1
5	72916001	Plaque	1
6	41251100	Support	1
7	68420220	Double Remote Control Switch	1
8	72351010	Cover	1
9	884750	Insulator	1
10	887550	Relay	1
11	72400012	Fuseholder	2
12	72916004	Plaque	1
13	72916003	Cover	2
14	42351030	Stud Bolt	1
15	72700015	Lever for Connector	1
16	72700014	Connector Male	1
17	72700013	Connector Female	1
50	70940301	Screw	
51	980054	Washer	
52	71010301	Nut	
53	924032	Lock Nut	
54	964082	Screw	
55	980066	Washer	
56	964098	Screw	
57	964088	Screw	
58	980045	Lock Washer	
59	980041	Lock Washer	
60	924043	Lock Nut	
61	70960502	Dowel	
62	924029	Lock Nut	
63	70940305	Screw	



Item	Part Number	Component Descriptions
A	72102009	Bipolar Switch Green (Solenoid Valve Solution)
B	72102009	Bipolar Switch Green (Vacuum Motor)
C	72102009	Bipolar Switch Green (Motor Brushes)
D	72107004	Contact/Switch (On/Off General), prior to 8/00
	72107005	Contact/Switch (On/Off General), effective 8/00
E	911167	Green Signal Protected 24V (Control Batteries)
F1	72400301	Fuse 3A (Controls)
F2	72403003	Maxifuse 30A (Vacuum Motor)
F3	72405002	Maxifuse 50A (Brush Motor)
H	67900001	Check Card Control Batteries 24V Lead Batteries
H1	67903002	Check Card Control Batteries 24V Gel Batteries
L	887550	Relay 24V 30A Faston (Vacuum Motor)
M1	68220370	Brush Motor 24V
M2	68120460	Vacuum Motor 24V with Conveyor Assembled
MI-1	911170	Microswitch 3x22 (Motor Cylindrical Brushes)
N	884750	Insulator M5x25 FF (Negative General)
P	68420230	Remote Control Switch 24V with Diode (Brush Motor)
Q	68522070	Coil Solenoid Valve 24V - 1/2

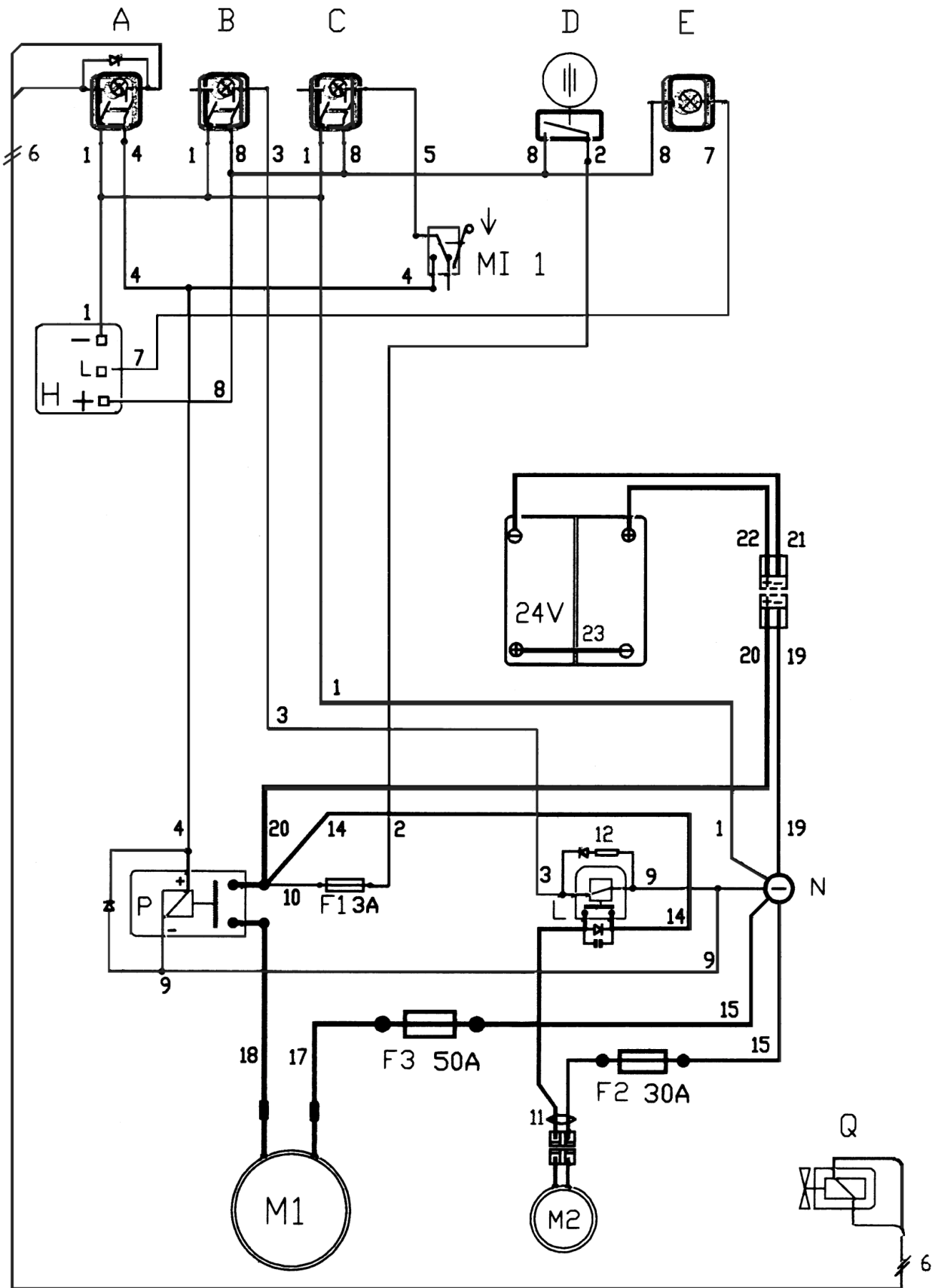
Item	Part Number	Cable Descriptions
1/6	68023001	Series Cables and connectors for Switches
1	68023033	4 Cables Black No. 1
2	68023034	Cable Brown No. 2
3	68023035	Cable Blue No. 3
4-5	68023036	3 Cables Red No. 4-5
6	68023014	2 Cables Brown-Blue No. 6
7	68023003	Cable Blue No. 7
8	68023004	4 Cables Red No. 8
9	68023005	2 Cables Black No. 9
10	68023006	Cable Red No. 10
11	68023007	Cables Suction Motor No. 11
12	72500011	Diode and Resistance with Terminal No. 12
13	68023002	Series Cables and Connector Brush Release No. 13
14	68023008	Cable Red + Condenser and Diode No. 14
15	68023009	Cable Black No. 15
17/18	68023029	2 Cables Black-Red Motor Brushes No. 17-18
19/20	68023037	2 Cables Black-Red and Connector 80A
21/22	68023038	2 Cables Black-Red and Connector 80A
23	68000154	Cable Bridge with Battery Terminals (+) (-)



20B Electrical Components Parts List
Effective March 2001

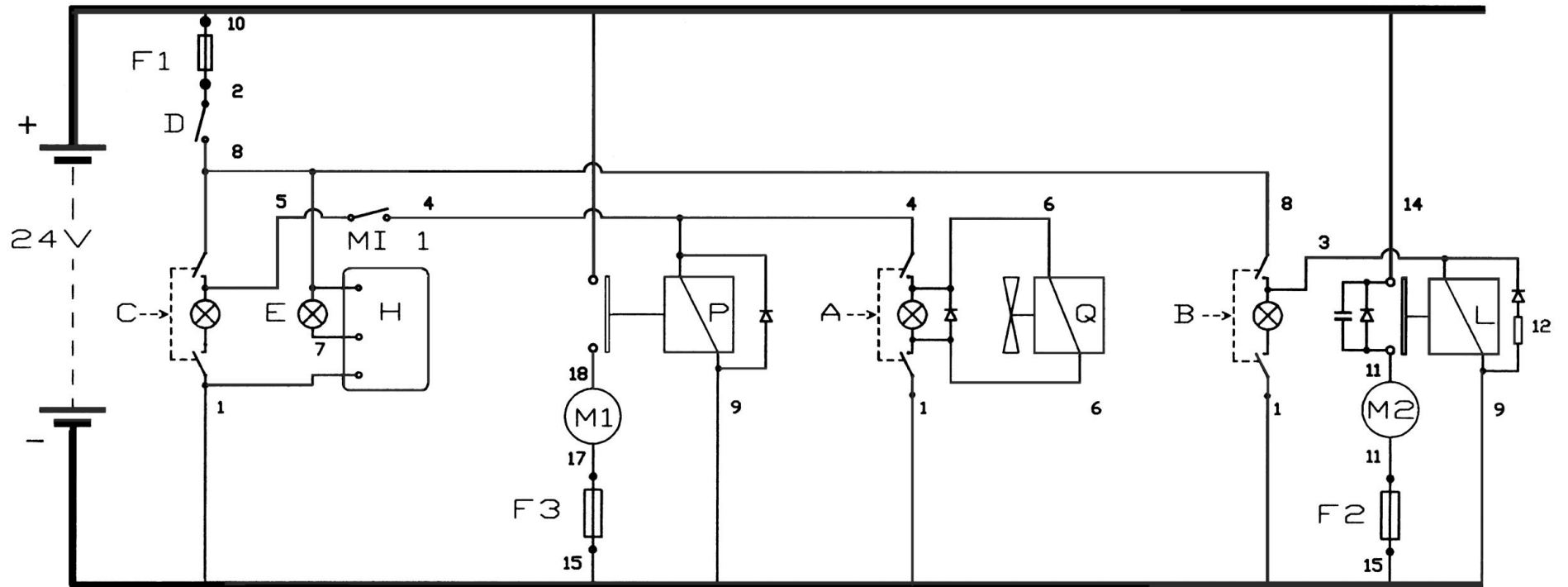
Item	Part Number	Component Descriptions
A	72102009	Bipolar Switch Green (Solenoid Valve Solution)
B	72102009	Bipolar Switch Green (Vacuum Motor)
C	72102009	Bipolar Switch Green (Motor Brushes)
D	72107004	Contact/Switch (On/Off General), prior to 8/00
	72107005	Contact/Switch (On/Off General), effective 8/00
E	911167	Green Signal Protected 24V (Control Batteries)
F1	72400301	Fuse 3A (Controls)
F2	72403003	Maxifuse 30A (Vacuum Motor)
F3	72405002	Maxifuse 50A (Brush Motor)
H	67900001	Check Card Control Batteries 24V Lead Batteries
H1	67903002	Check Card Control Batteries 24V Gel Batteries
L	887550	Relay 24V 30A Faston (Vacuum Motor)
M1	68220370	Brush Motor 24V
M2	68120460	Vacuum Motor 24V with Conveyor Assembled
MI-1	911170	Microswitch 3x22 (Motor Cylindrical Brushes)
N	884750	Insulator M5x25 FF (Negative General)
P	68420230	Remote Control Switch 24V with Diode (Brush Motor)
Q	68522070	Coil Solenoid Valve 24V - 1/2

Item	Part Number	Cable Descriptions
1/6	68023001	Series Cables and connectors for Switches
1	68023033	4 Cables Black No. 1
2	68023034	Cable Brown No. 2
3	68023035	Cable Blue No. 3
4-5	68023036	3 Cables Red No. 4-5
6	68023014	2 Cables Brown-Blue No. 6
7	68023003	Cable Blue No. 7
8	68023004	4 Cables Red No. 8
9	68023005	2 Cables Black No. 9
10	68023006	Cable Red No. 10
11	68023007	Cables Suction Motor No. 11
12	72500011	Diode and Resistance with Terminal No. 12
13	68023002	Series Cables and Connector Brush Release No. 13
14	68023008	Cable Red + Condenser and Diode No. 14
15	68023009	Cable Black No. 15
17/18	68023029	2 Cables Black-Red Motor Brushes No. 17-18
19/20	68023037	2 Cables Black-Red and Connector 80A
21/22	68023038	2 Cables Black-Red and Connector 80A
23	68000154	Cable Bridge with Battery Terminals (+) (-)



Item	Part Number	Component Descriptions
A	72102009	Bipolar Switch Green (Solenoid Valve Solution)
B	72102009	Bipolar Switch Green (Vacuum Motor)
C	72102009	Bipolar Switch Green (Motor Cylindrical Brushes)
D	72107004	Contact/Switch (On/Off General), prior to 8/00
	72107005	Contact/Switch (On/Off General), effective 8/00
E	911167	Green Signal Protected 24V (Control Batteries)
F1	72400301	Fuse 3A (Controls)
F2	72403003	Maxifuse 30A (Vacuum Motor)
F3	72405002	Maxifuse 50A (Brush Motor)
H	67900001	Check Card Control Batteries 24V Lead Batteries
H1	67903002	Check Card Control Batteries 24V Gel Batteries
L	887550	Relay 24V 30A Faston (Vacuum Motor)
M1	68220380	Brush Motor 24V
M2	68120460	Vacuum Motor 24V with Conveyor Assembled
MI-1	911170	Microswitch 3x22 (Motor Cylindrical Brushes)
N	72903002	Insulator M5x25 FF (Negative General)
P	68420120	Remote Control Switch 24V with Diode (Brush Motor)
Q	68522070	Coil Solenoid Valve 24V - 1/2

Item	Part Number	Cable Descriptions
1/6	68023001	Series Cables and connectors for Switches
1	68023033	4 Cables Black No. 1
2	68023034	Cable Brown No. 2
3	68023035	Cable Blue No. 3
4-5	68023036	3 Cables Red No. 4-5
6	68023014	2 Cables Brown-Blue No. 6
7	68023003	Cable Blue No. 7
8	68023004	4 Cables Red No. 8
9	68023005	2 Cables Black No. 9
10	68023006	Cable Red No. 10
11	68023007	Cables Suction Motor No. 11
12	72500011	Diode and Resistance with Terminal No. 12
14	68023008	Cable Red + Condenser and Diode No. 14
15	68023009	Cable Black No. 15
17/18	68023029	2 Cables Black-Red Motor Brushes No. 17-18
19/20	68023037	2 Cables Black-Red and Connector 80A
21/22	68023038	2 Cables Black-Red and Connector 80A
23	68000154	Cable Bridge with Battery Terminals (+) (-)



18B Electrical Components Parts List
Effective March 2001

Item	Part Number	Component Descriptions
A	72102009	Bipolar Switch Green (Solenoid Valve Solution)
B	72102009	Bipolar Switch Green (Vacuum Motor)
C	72102009	Bipolar Switch Green (Motor Cylindrical Brushes)
D	72107004	Contact/Switch (On/Off General), prior to 8/00
	72107005	Contact/Switch (On/Off General), effective 8/00
E	911167	Green Signal Protected 24V (Control Batteries)
F1	72400301	Fuse 3A (Controls)
F2	72403003	Maxifuse 30A (Vacuum Motor)
F3	72405002	Maxifuse 50A (Brush Motor)
H	67900001	Check Card Control Batteries 24V Lead Batteries
H1	67903002	Check Card Control Batteries 24V Gel Batteries
L	887550	Relay 24V 30A Faston (Vacuum Motor)
M1	68220380	Brush Motor 24V
M2	68120460	Vacuum Motor 24V with Conveyor Assembled
MI-1	911170	Microswitch 3x22 (Motor Cylindrical Brushes)
N	72903002	Insulator M5x25 FF (Negative General)
P	68420120	Remote Control Switch 24V with Diode (Brush Motor)
Q	68522070	Coil Solenoid Valve 24V - 1/2

Item	Part Number	Cable Descriptions
1/6	68023001	Series Cables and connectors for Switches
1	68023033	4 Cables Black No. 1
2	68023034	Cable Brown No. 2
3	68023035	Cable Blue No. 3
4-5	68023036	3 Cables Red No. 4-5
6	68023014	2 Cables Brown-Blue No. 6
7	68023003	Cable Blue No. 7
8	68023004	4 Cables Red No. 8
9	68023005	2 Cables Black No. 9
10	68023006	Cable Red No. 10
11	68023007	Cables Suction Motor No. 11
12	72500011	Diode and Resistance with Terminal No. 12
14	68023008	Cable Red + Condenser and Diode No. 14
15	68023009	Cable Black No. 15
17/18	68023029	2 Cables Black-Red Motor Brushes No. 17-18
19/20	68023037	2 Cables Black-Red and Connector 80A
21/22	68023038	2 Cables Black-Red and Connector 80A
23	68000154	Cable Bridge with Battery Terminals (+) (-)

WARRANTY POLICY PACIFIC LIMITED WARRANTY

The **Pacific** ScrubMaster 20B and FloorMaster 18B have been manufactured, tested and inspected in accordance with specific engineering requirements. This machine is **WARRANTED** to be free from defects in workmanship and materials for periods as follows from the date of purchase.

Ten (10) Years Parts, One (1) Year Labor – Polyethylene Components
Five (5) Years Parts, One (1) Year Labor – Main Frame

Two (2) Years Parts, One (1) Year Labor – Brush Drive Motors
One (1) Year Parts & Labor – All other components unless excluded below

Travel time for warranty repair is authorized for a period of ninety (90) days following the date of sale to the end user, with a maximum of three (3) hours per claim.

This warranty extends to the original user/purchaser and only when used, operated and maintained in accordance with **Pacific** Operating and Maintenance instructions.

This warranty does not apply to certain wear parts and accessories of the machine such as electrical cords, carbon motor brushes, floor brushes, belts, hoses, tools, squeegee blades, etc., nor does it apply to damage or failure caused by improper use, abuse or neglect. Warranty credit or replacement of return parts including motors, pumps, etc., is subject to incoming inspection of those items.

To secure repair under this warranty, the following procedure should be taken:

1. After the expiration of the ninety (90) day travel time warranty period, the customer is responsible for warranty travel payment or the inoperative machine or warranted parts must be delivered to the authorized dealer with shipping and delivery charges prepaid. If unable to locate the Dealer, you may contact **Pacific** at the address listed herein for the location of the nearest **Pacific** repair center or agent or for other instructions pertaining to your warranty difficulty.
2. Upon compliance with the above warranty procedure, all warranted repairs will be completed at no additional charge or cost to the user.
3. Only **Pacific** or its authorized dealers and agents may make no charge warranty repairs on this product. All others do so at their own risk.

This warranty limits **Pacific** liability to the repair of the product and/or warranted parts replacement and does not include incidental or consequential damages arising from the use of a **Pacific** machine whether defective or not.

BATTERY WARRANTY

In addition to the terms above, any original equipment Pacific Steamex Battery which becomes unserviceable under normal use within a period of ninety (90) days from date of sale to the original user will be repaired or replaced with one of equal specification at our option, F.O.B. any authorized Pacific or Service Branch, with no charge to user, except transportation costs. After the expiration of the above ninety (90) day period, any battery which fails under normal use will be adjusted to the original user with a new battery of equal specification on a twelve (12) month pro rata basis from the date of purchase. Adjustment will be determined using the then current list price, plus transportation costs. Warranty is rendered null and void if battery is not kept filled to the proper level with DISTILLED WATER.

This warranty is in lieu of all other expressed or implied warranties and is extended to the original purchaser/user.

PACIFIC
2259 Sheridan
Muskegon, Michigan 49442
Ph: (800) 968-1332 Fax: (231) 773-1642
www.nextwaveofclean.com