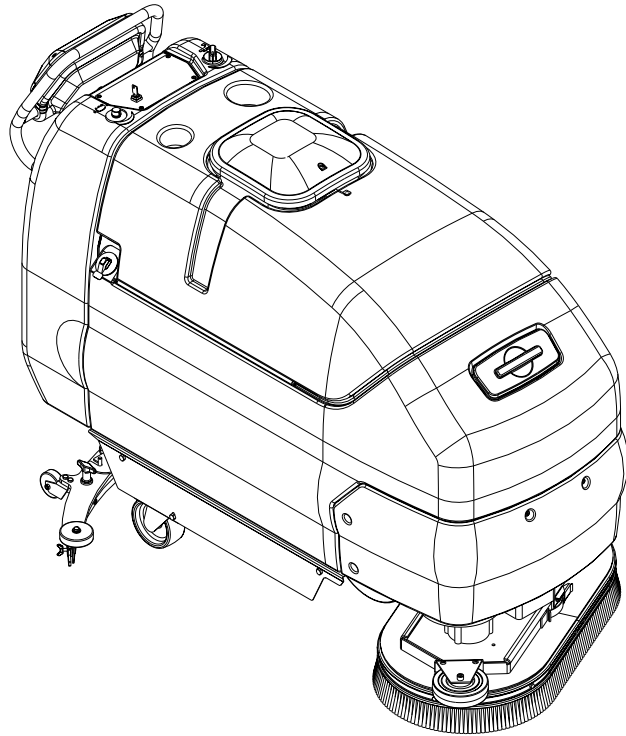


ConvertaMAX™ 28

I-MAX™ 28HD

BA 750 / BA 850



PARTS LIST

Advance MODELS 56396015, 56396016

Nilfisk MODELS 56396017, 56396018

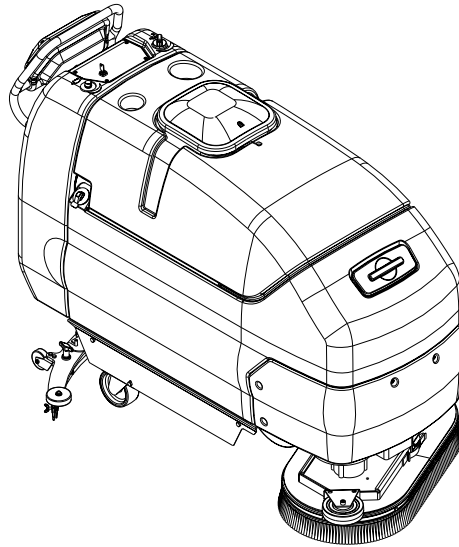
ConvertaMAX 28 after SN1593240 / I-MAX 28HD after SN1593242

BA 750 after SN1594387 / BA 850 after SN1594391



**Nilfisk
Advance**
setting standards

3/02 revised 10/03 FORM NO. 56042429
BOOK E SECTION 12.3.1

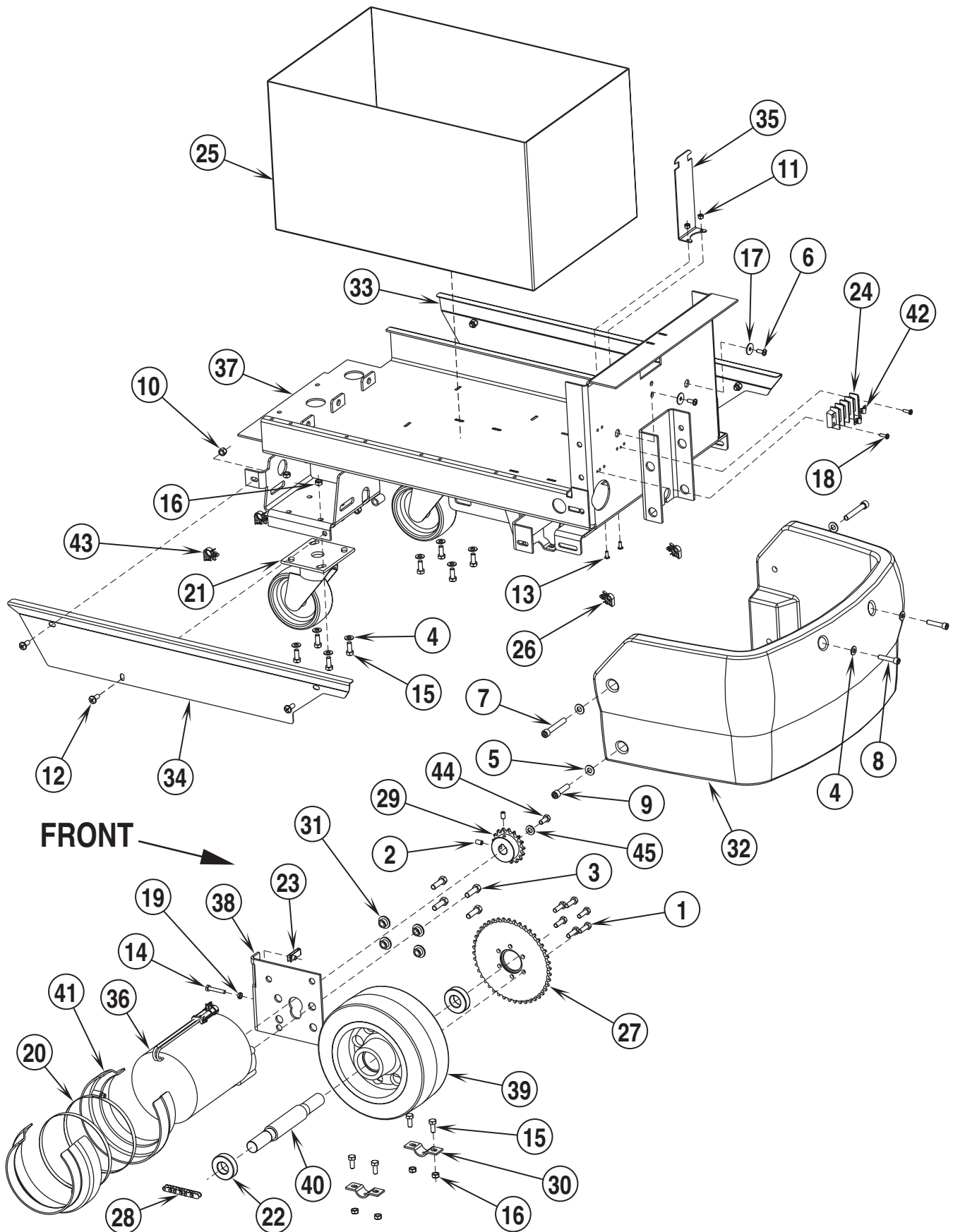


DESCRIPTION	PLAN
CONVERTAMAX™ 28 / BA 750 CHASSIS SYSTEM	E-12.3.1-3
BA 850 CHASSIS SYSTEM	E-12.3.1-5
I-MAX™ 28HD CHASSIS SYSTEM	E-12.3.1-7
CONTROL HANDLE SYSTEM	E-12.3.1-9
HANDLE PADDLE ASSEMBLY	E-12.3.1-11
C-MAX 28 / I-MAX 28HD / BA 750 SCRUB SYSTEM	E-12.3.1-13
BA 850 SCRUB SYSTEM	E-12.3.1-15
SKIRT ASSEMBLIES (CONVERTAMAX 28 / BA 750)	E-12.3.1-17
SKIRT ASSEMBLIES (BA 850 / I-MAX 28HD)	E-12.3.1-19
SOLUTION SYSTEM	E-12.3.1-21
RECOVERY SYSTEM	E-12.3.1-23
SQUEEGEE SYS (C-MAX 28, I-MAX 28HD & BA 750)	E-12.3.1-25
SQUEEGEE SYSTEM (BA 850)	E-12.3.1-27
SQUEEGEE ASSY (C-MAX 28 / I-MAX 28HD / BA 750)	E-12.3.1-29
SQUEEGEE ASSY (BA 850)	E-12.3.1-31
DECAL SYSTEM	E-12.3.1-33
ELECTRICAL DIAGRAM	E-12.3.1-35
PARKING BRAKE KIT	E-12.3.1-37
HIGH TOWER ROLLER BUMPER KIT	E-12.3.1-39
BRUSH / DISC SELECTOR GUIDE	E-12.3.1-40

WHEN ORDERING PARTS

- * Use the 8 digit numbers from the "Ref. No." columns in this parts list.
- * Specify the model and serial number of the machine.
- * Use the space below to record the model and serial number for future reference.

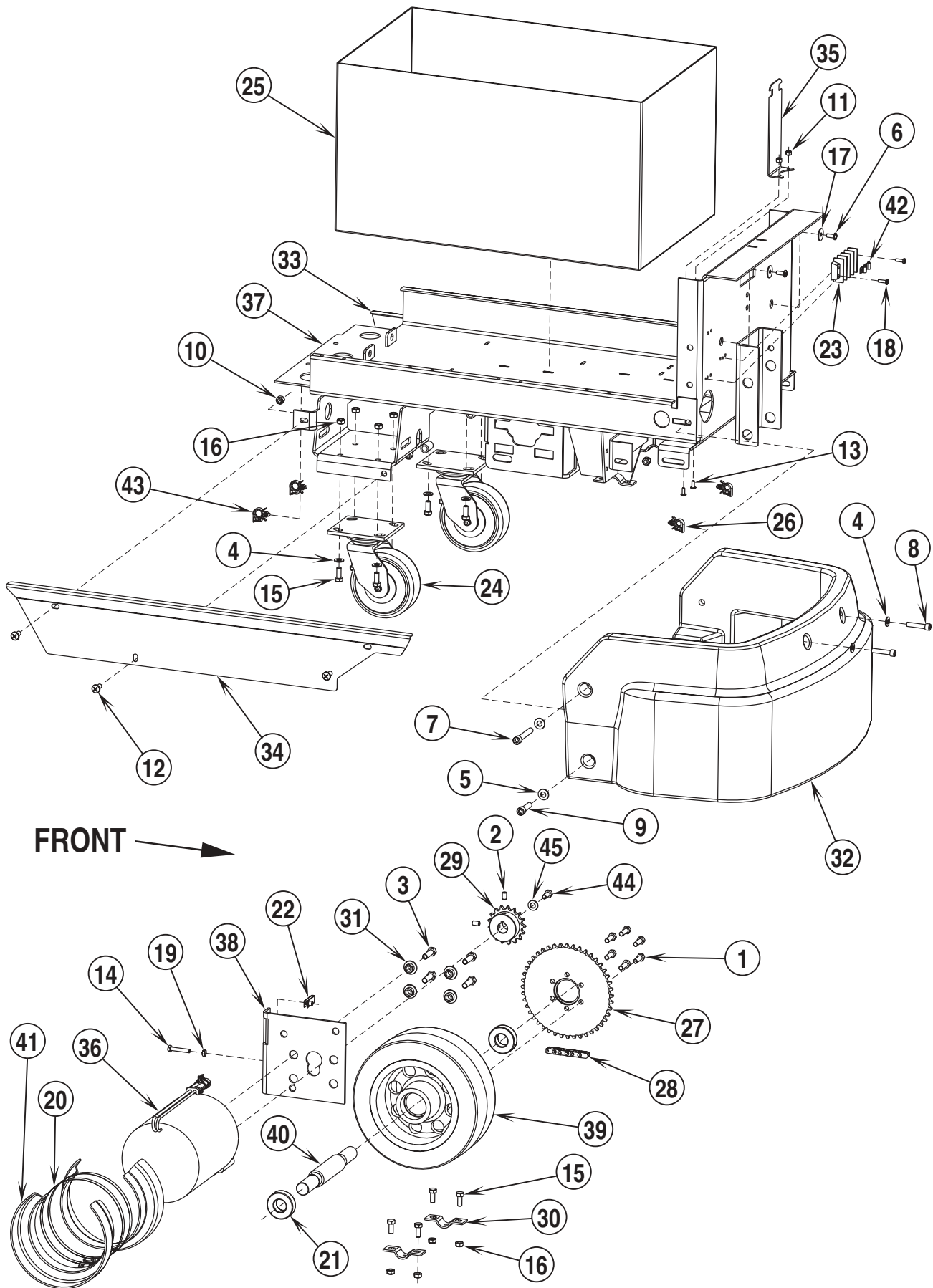
Model _____ Serial No. _____



02-3	CONVERTAMAX 28 / BA 750 CHASSIS SYSTEM	BOOK E		
02-11	ConvertaMAX 28 / I-MAX 28HD / BA 750 / BA 850	E	12.3.1	3

Item	Ref. No.	Qty	Description
1	56003073	6	Scr, Hex Hd Loc 5/16-18 x 1.00
2	56001826	2	Scr, Soc Set Loc 5/16-18 x .50
3	56001858	4	Scr, Hex Hd 3/8-16 x 1.25
4	56001939	10	Wsh, Flt SAE 5/16
5	56002063	4	Wsh, Flt SAE 3/8
6	56002066	2	Scr, Pan Phil 1/4-20 x .62
7	56002196	2	Scr, Soc Hd 3/8-16 x 2.50
8	56002201	2	Scr, Soc Hd 5/16-18 x 1.50
9	56002316	2	Scr, Soc Hd 3/8-16 x 1.50
10	56002701	6	Nut, Hex Nyl Loc 5/16-18
11	56002768	2	Nut, Hex Nyl Loc 10-24
12	56002793	6	Scr, Pan Phil 5/16-18 x .75
13	56002900	2	Scr, Pan Phil SS 10-24 x .50
14	56003125	1	Scr, Hex Thd To Hd SS 1/4-20 x 1.50
15	56003179	12	Scr, Hex Thd To Hd M8-1.25 x 20mm
16	56003389	12	Nut, Hex Nyl Loc M8-1.25
17	56009002	2	Wsh, Flt .266 x .906 x .060
18	56009042	2	Scr, Pan Phil Thd Form 10-24 x .62
19	56009087	1	Nut, Hex Jam 1/4-20
20	56355488	2	Clamp, Hose SAE #96
21	56440450	2	Caster, Swivel
**	56440451	2	Caster, Swivel Neoprene
**	56391315	2	Castor, Spring Load
22	56479430	2	Bearing, Ball
23	56009289	1	Nut, U Multi-Thread 1/4-20
24	56026111	1	Term. Block, 4 Term. 50 Amp
25	56056727	1	Box, Battery Molded
26	56386407	2	Clip, Conduit
27	56396022	1	Sprocket
28	56396033	1	Chain, Roller
29	56396034	1	Sprocket, H40B17
30	56396039	2	Clamp, Axle
31	56396048	4	Bushing
32	56396083	1	Panel, Front
33	56396115	1	Panel, Left
34	56396118	1	Panel, Right
35	56396200	1	Bracket, Vac Exhaust Hose
36	56396209	1	Asm. Motor and Gear Unit, 24V
37	56396263	1	Chassis Weldment
38	56396267	1	Bracket, Tension-Traction Drive
39	56396350	1	Wheel 10.00 x 4.00
40	56396351	1	Axle
41	56397112	2	Shroud, Motor
42	56397184	2	Plate, Jumper
43	56900756	2	Clip, Conduit
44	56002667	1	Scr, Hex Hd 5/16-18 x .75
45	56009214	1	Wsh, Flt. .406 x .750 x .090
**	56396307	1	High Tower Roller Bumper Kit
**	56396323	1	Parking Brake Kit

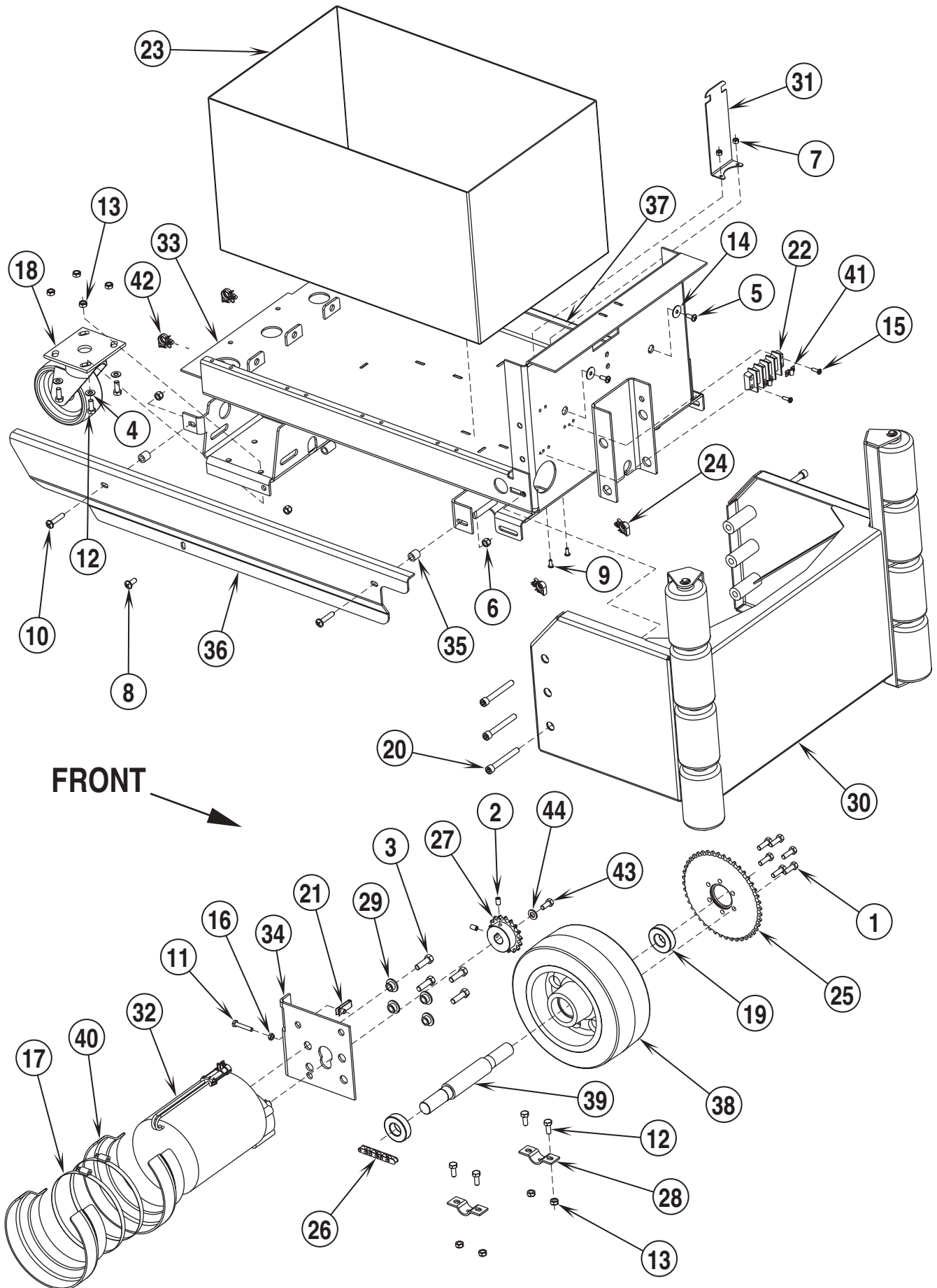
** = Optional



02-3	BA 850 CHASSIS SYSTEM	BOOK E		
02-11	ConvertaMAX 28 / I-MAX 28HD / BA 750 / BA 850	E	12.3.1	5

Item	Ref. No.	Qty	Description
1	56003073	6	Scr, Hex Hd Loc 5/16-18 x 1.00
2	56001826	2	Scr, Soc Set Loc 5/16-18 x .50
3	56001858	4	Scr, Hex Hd 3/8-16 x 1.25
4	56001939	10	Wsh, Flt SAE 5/16
5	56002063	4	Wsh, Flt SAE 3/8
6	56002066	2	Scr, Pan Phil 1/4-20 x .62
7	56002196	2	Scr, Soc Hd 3/8-16 x 2.50
8	56002201	2	Scr, Soc Hd 5/16-18 x 1.50
9	56002316	2	Scr, Soc Hd 3/8-16 x 1.50
10	56002701	6	Nut, Hex Nyl Loc 5/16-18
11	56002768	2	Nut, Hex Nyl Loc 10-24
12	56002793	6	Scr, Pan Phil 5/16-18 x .75
13	56002900	2	Scr, Pan Phil SS 10-24 x .50
14	56003125	1	Scr, Hex Thd To Hd SS 1/4-20 x 1.50
15	56003179	12	Scr, Hex Thd To Hd M8-1.25 x 20mm
16	56003389	12	Nut, Hex Nyl Loc M8-1.25
17	56009002	2	Wsh, Flt .266 x .906 x .060
18	56009042	2	Scr, Pan Phil Thd Form 10-24 x .62
19	56009087	1	Nut, Hex Jam 1/4-20
20	56355488	2	Clamp, Hose SAE #96
21	56479430	2	Bearing, Ball
22	56009289	1	Nut, U Multi-Thread 1/4-20
23	56026111	1	Term. Block, 4 Term. 50 Amp
24	56440450	2	Caster, Swivel
**	56440451	2	Caster, Swivel Neoprene
**	56391315	2	Castor, Spring Load
25	56056727	1	Box, Battery Molded
26	56386407	2	Clip, Conduit
27	56396022	1	Sprocket
28	56396033	1	Chain, Roller
29	56396034	1	Sprocket, H40B17
30	56396039	2	Clamp, Axle
31	56396048	4	Bushing
32	56396084	1	Panel, Front
33	56396115	1	Panel, Left
34	56396118	1	Panel, Right
35	56396200	1	Bracket, Vac Exhaust Hose
36	56396209	1	Asm, Motor and Gear Unit, 24V
37	56396263	1	Chassis Weldment
38	56396267	1	Bracket, Tension-Traction Drive
39	56396350	1	Wheel 10.00 x 4.00
40	56396351	1	Axle
41	56397112	2	Shroud, Motor
42	56397184	2	Plate, Jumper
43	56900756	2	Clip, Conduit
44	56002667	1	Scr, Hex Hd 5/16-18 x .75
45	56009214	1	Wsh, Flt. .406 x .750 x .090
**	56396307	1	High Tower Roller Bumper Kit
**	56396323	1	Parking Brake Kit

** = Optional

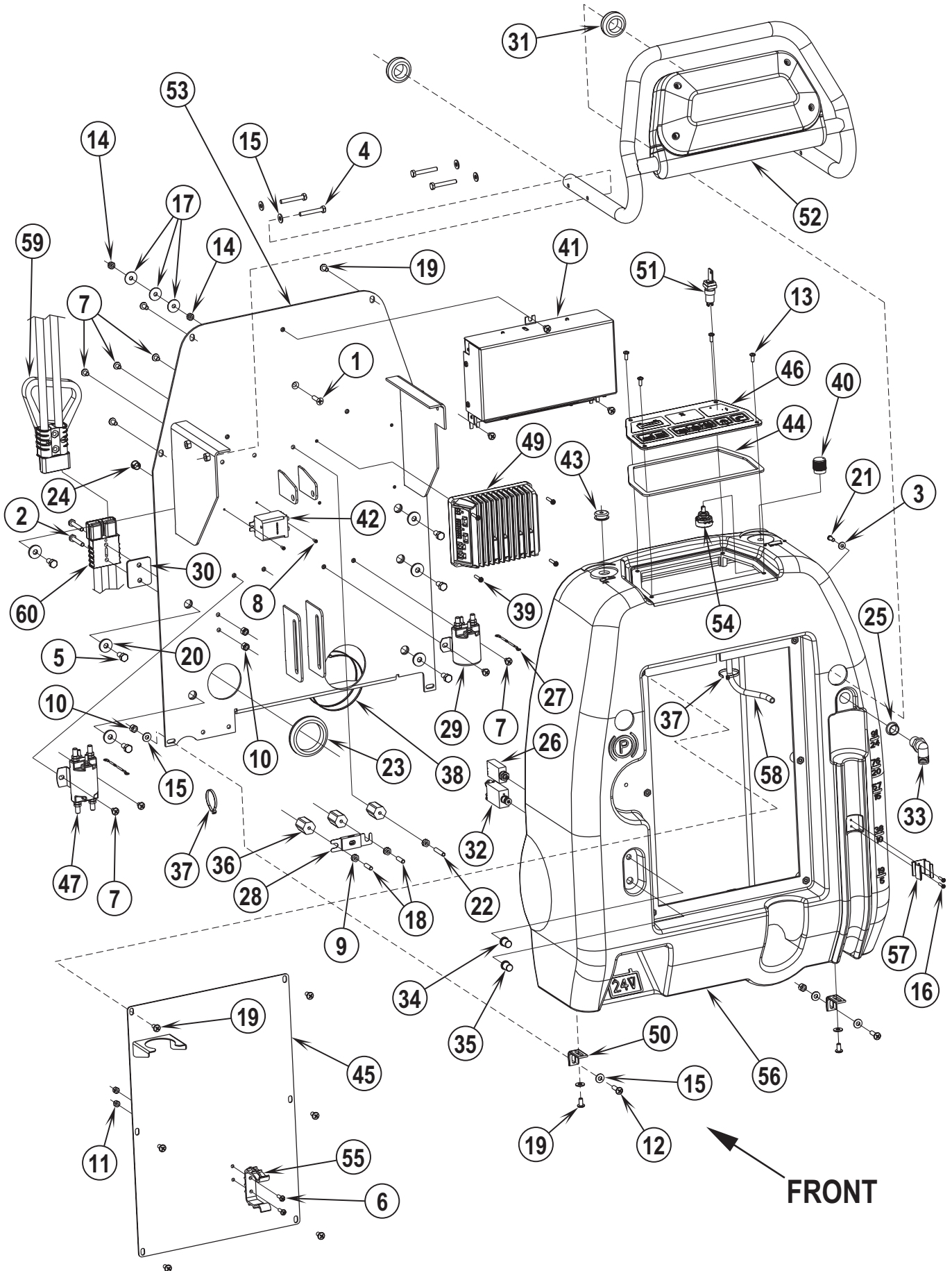


02-3	I-MAX™ 28HD CHASSIS SYSTEM	BOOK E		
02-11	ConvertaMAX 28 / I-MAX 28HD / BA 750 / BA 850	E	12.3.1	7

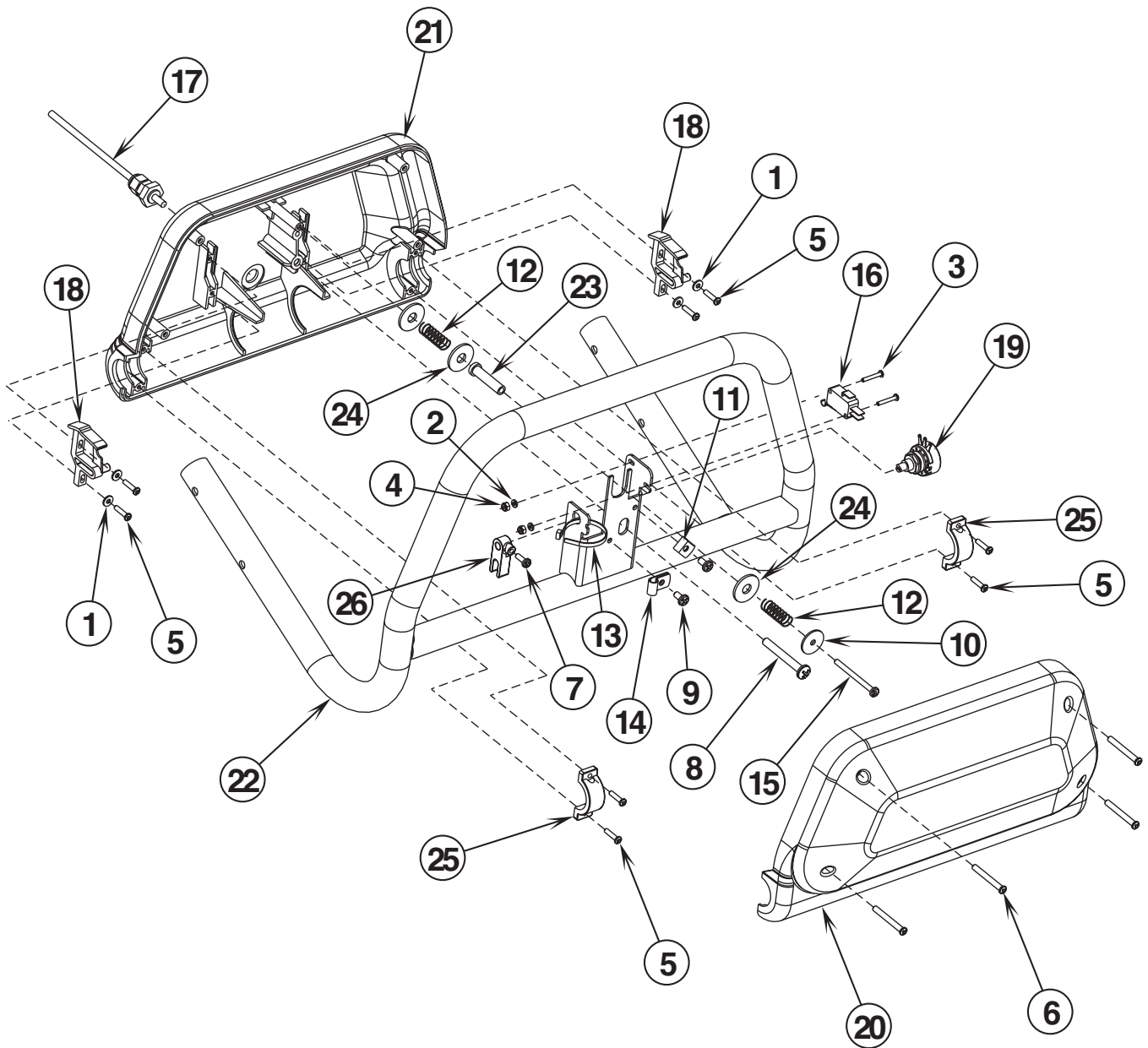
Item	Ref. No.	Qty	Description
1	56003073	6	Scr, Hex Hd Loc 5/16-18 x 1.00
2	56001826	2	Scr, Soc Set Loc 5/16-18 x .50
3	56001858	4	Scr, Hex Hd 3/8-16 x 1.25
4	56001939	8	Wsh, Flt SAE 5/16
5	56002066	2	Scr, Pan Phil 1/4-20 x .62
6	56002701	6	Nut, Hex Nyl Loc 5/16-18
7	56002768	2	Nut, Hex Nyl Loc 10-24
8	56002793	2	Scr, Pan Phil 5/16-18 x .75
9	56002900	2	Scr, Pan Phil SS 10-24 x .50
10	56002968	4	Scr, Pan Phil 5/16-18 x 1.50
11	56003125	1	Scr, Hex Thd To Hd SS 1/4-20 x 1.50
12	56003179	12	Scr, Hex Thd To Hd M8-1.25 x 20mm
13	56003389	12	Nut, Hex Nyl Loc M8-1.25
14	56009002	2	Wsh, Flt .266 x .906 x .060
15	56009042	2	Scr, Pan Phil Thd Form 10-24 x .62
16	56009087	1	Nut, Hex Jam 1/4-20
17	56355488	2	Clamp, Hose SAE #96
18	56440450	2	Caster, Swivel
**	56440451	2	Caster, Swivel Neoprene
**	56391315	2	Castor, Spring Load
19	56479430	2	Bearing, Ball
20	56003542	6	Scr, Soc Hd 3/8-16 x 3.00
21	56009289	1	Nut, U Multi-Thread 1/4-20
22	56026111	1	Term. Block, 4 Term. 50 Amp
23	56056727	1	Box, Battery Molded
24	56386407	2	Clip, Conduit
25	56396022	1	Sprocket
26	56396033	1	Chain, Roller
27	56396034	1	Sprocket, H40B17
28	56396039	2	Clamp, Axle
29	56396048	4	Bushing
30	56396134	1	Assembly, Bumper Industrial
*	56003264	2	Ring, Ret Ext Type E .50 Dia.
*	56009097	2	Nut, Push Cap 1/2
*	56392102	8	Roller
*	56392809	2	Rod
*	56396133	1	Weldment, Bumper Industrial
31	56396200	1	Bracket, Vac Exhaust Hose
32	56396209	1	Asm. Motor and Gear Unit, 24V
33	56396263	1	Chassis Weldment
34	56396267	1	Bracket, Tension-Traction Drive
35	56396315	4	Spacer, AL
36	56396316	1	Panel, Right
37	56396317	1	Panel, Left
38	56396350	1	Wheel 10.00 x 4.00
39	56396351	1	Axle
40	56397112	2	Shroud, Motor
41	56397184	2	Plate, Jumper
42	56900756	2	Clip, Conduit
43	56002667	1	Scr, Hex Hd 5/16-18 x .75
44	56009214	1	Wsh, Flt. .406 x .750 x .090
**	56396260	1	Industrial Side Panel Kit
**	56396323	1	Parking Brake Kit

* = Not Shown

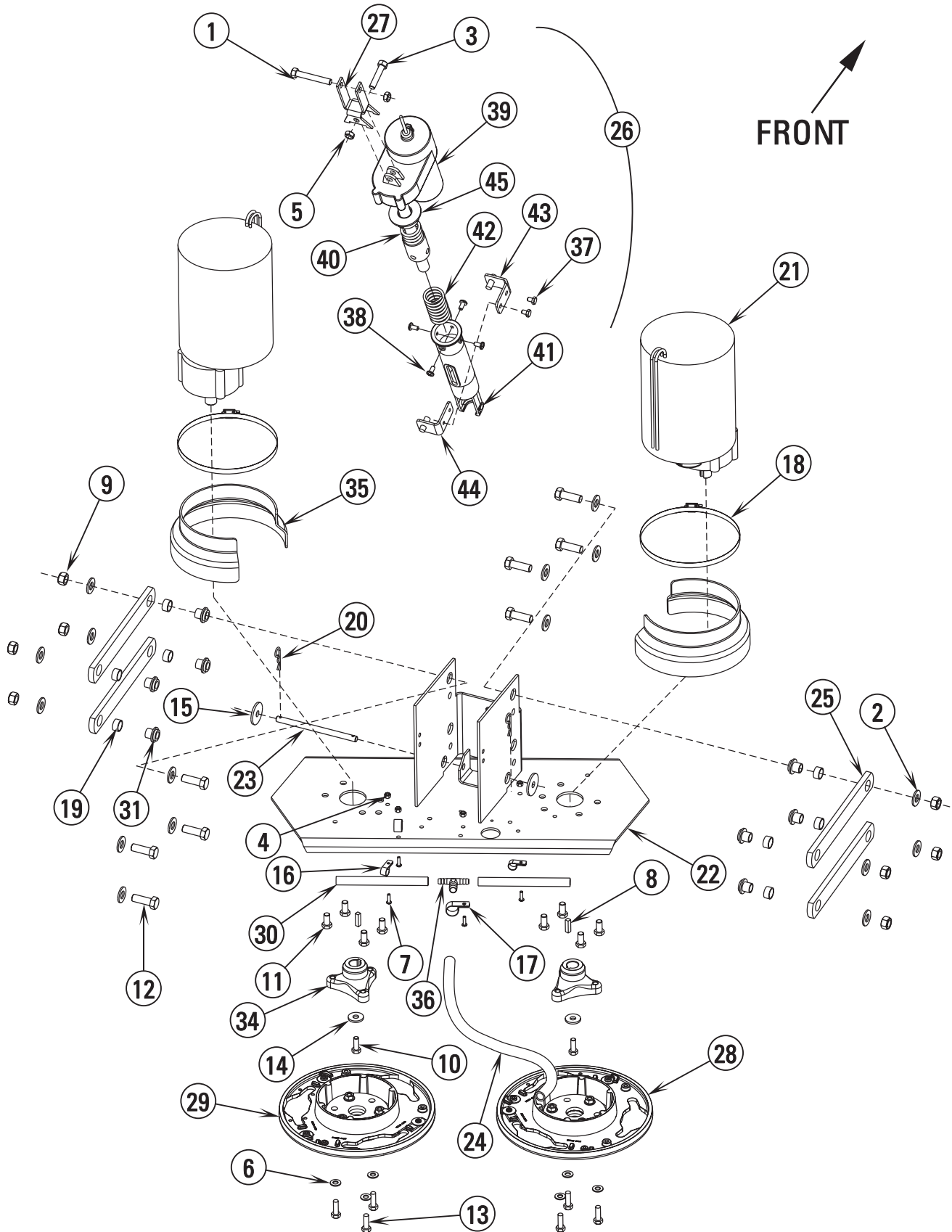
** = Optional



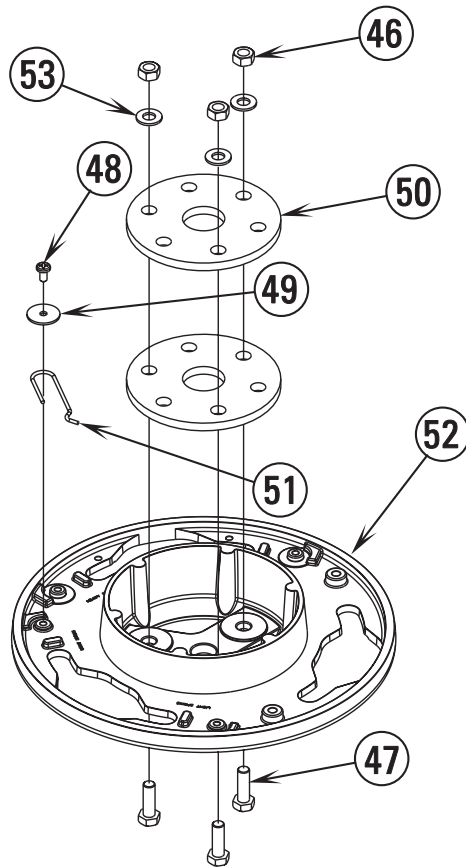
Item	Ref. No.	Qty	Description	Item	Ref. No.	Qty	Description
1	56001832	1	Scr, Flt Phil 1/4-20 x 1.00	46	56396161	1	Display Panel Assembly
2	56001833	2	Scr, Hex Hd 1/4-20 x 1.50	47	56397088	1	Contact, 24V, SPDT (Brush Motor)
3	56001954	1	Wsh, Flt SAE #10	48	56396184	1	Cable Assembly, Thermistor (Not Shown)
4	56001967	4	Scr, Hex Hd 1/4-20 x 1.75	49	56396185	1	Controller, 24V
5	56002035	6	Scr, Hex Hd 5/16-18 x .62	50	56396218	2	Bracket, Panel
6	56002124	2	Scr, Pan Phil 10-24 x .62	51	56396188	1	Switch, Key
7	56002462	10	Scr, Pan Phil 1/4-20 x .38	*	56396189	A/R	Replacement Key
8	56002539	2	Scr, Pan Phil Thd Form 6-32 x .31	52	56396321	1	Paddle, Handle Assy (see associated pages)
9	56002561	3	Nut, Hex W/SHPRF 1/4-20	53	56396319	1	Back Panel Weldment
10	56002708	4	Nut, Hex Nyl Loc 1/4-20	54	56396197	1	Potentiometer, 100K
11	56002768	2	Nut, Hex Nyl Loc 10-24	55	56396199	1	Clamp, Plastic
12	56002785	2	Scr, Pan Phil 1/4-20 x .88	56	56396281	1	Cover, Rear
13	56002831	4	Scr, Pan Phil Blk 10-24 x .50	57	56396252	1	Spring Clip
14	56002840	2	Nut, Hex Nyl Loc-Thin 1/4-20	58	56396204	1	Hose, PVC 1/4 x 3/8 x 48
15	56002859	10	Wsh, Flt SAE SS 1/4	59	56396202	1	Connector Assembly TSBUS2003-841 (Connect to Batteries)
16	56003197	2	Scr, Pan Phil Plastite 6-18 x .62	60	56396203	1	Connector Assembly (Connected to Machine)
17	56009002	3	Wsh, Flt .266 x .906 x .060	*	56396183	1	Harness, Main
18	56009020	2	Stud	* = Not Shown			
19	56009069	12	Scr, Pan Phil Loc 1/4-20 x .50				
20	56009122	6	Wsh, Flt .34 x .93 x .12				
21	56009191	1	Scr, Pan Phil Plastite 10-14 x .50				
22	56009203	1	Stud, 1/4-20				
23	56262531	1	Grommet				
24	56323560	1	Plug, Cap				
25	56900041	1	Plug, Cap				
26	56387316	1	Circuit Breaker 10 Amp (Control Circuit)				
27	56389265	2	Rectifier				
28	56412089	1	Fuse, 150 Amp				
29	56412179	1	Contact, 24 VDC (Vac Motor)				
30	56397189	1	Spacer				
31	56418199	2	Grommet				
32	56452193	1	Circuit Breaker 40 Amp (Wheel Drive)				
33	56456802	1	Barb, 90 Elbow 11/16 x 3/4 NPT				
34	56459367	1	Boot, Reset Button				
35	56459368	1	Boot, Reset Button				
36	56469858	3	Electrical Mount				
37	56478246	9	Tie, Cable				
38	56478523	2	Tie, Cable				
39	56009034	4	Scr, Pan Phil Thd Form 8-32 x .88				
40	56056596	1	Knob				
41	56396009	1	Control Box Assy.				
42	56396038	1	Relay, SPST, 24V (Brush Remove)				
43	56396149	1	Grommet				
44	56396151	1	Gasket				
45	56396155	1	Weldment, Electrical Cover TSBUS2002-830				

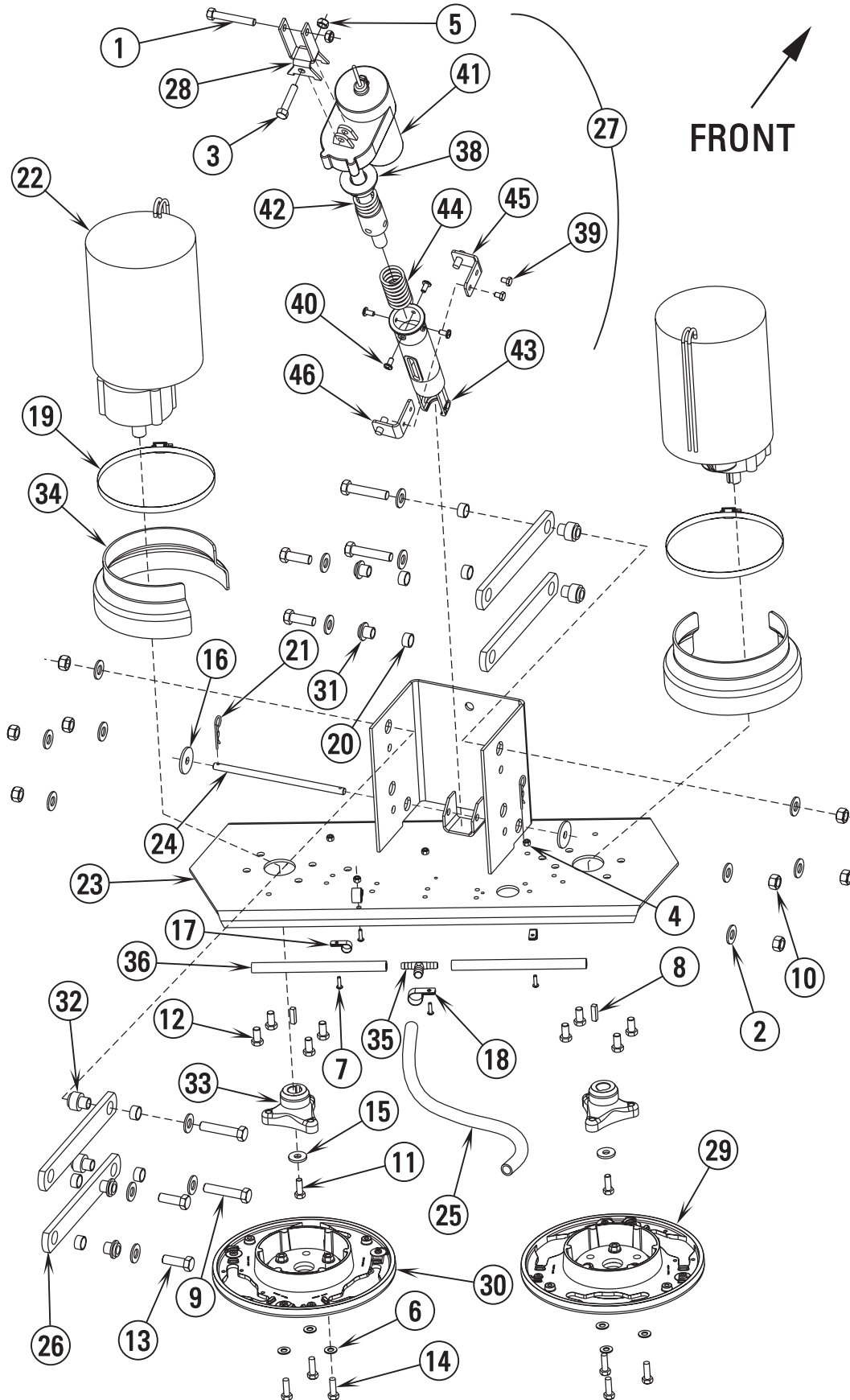


Item	Ref. No.	Qty	Description
	56396321	1	Paddle, Handle Assembly (#1-26)
1	56002006	4	Wsh, Flt SAE #6
2	56002431	2	Wsh, Flt SAE #4
3	56002713	2	Scr, Pan Phil 4-40 x .75
4	56002838	2	Nut, Hex Nyl Loc 4-40
5	56003197	8	Scr, Pan Phil Plastite 6-18 x .62
6	56003199	4	Scr, Pan Phil Plastite 8-15 x 1.50
7	56003354	1	Scr, Pan Phil M4 x 12
8	56003527	1	Scr, Pan Phil Plastite 1/4-10 x 2.00
9	56009030	2	Scr, Pan Phil Thd Form 10-24 x .38
10	56009096	1	Wsh, Flt .193 x .875 x .060
11	56220507	1	Clamp, P
12	56325654	2	Spring, Compression
13	56478246	1	Tie, Cable
14	56481890	1	Clamp, P
15	56009287	1	Scr, Pan Phil Type B 8 x 2.00
16	56263174	1	Switch, Snap SPDT (Squeegee Reverse)
17	56396234	1	Harness Assembly
18	56397015	2	Cam Controller
19	56397029	1	Potentiometer, 5K
20	56397030	1	Paddle, Front Molded
21	56397031	1	Paddle, Back Molded
22	56397034	1	Weldment, Handle
23	56397109	1	Sleeve
24	56397170	3	Washer, Plastic
25	56397171	2	Clamp
26	56397172	1	Potentiometer Fork



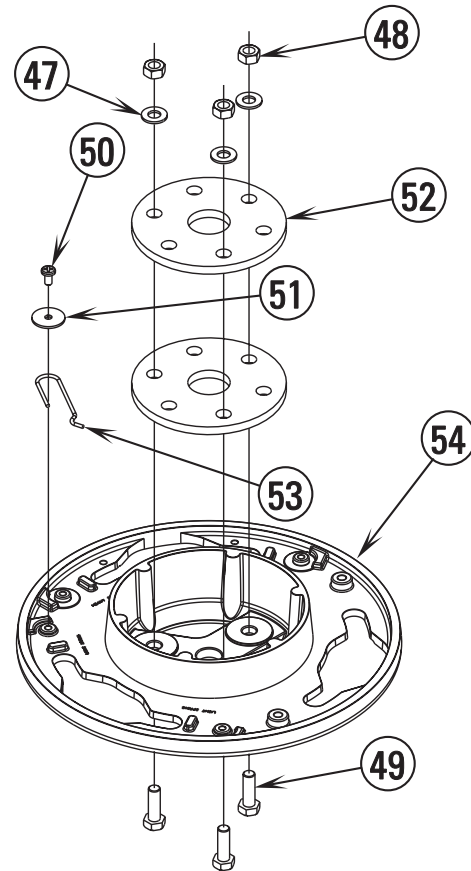
Item	Ref. No.	Qty	Description	Item	Ref. No.	Qty	Description
1	56001873	1	Scr, Hex Hd 3/8-16 x 2.50	**	56505770	2	Pad Holder
2	56001879	16	Wsh, Flt SAE 1/2	**	56505771	2	MagnaGrit Brush
3	56002684	1	Scr, Hex Hd 3/8-16 x 1.75	**	56505772	2	DynaGrit Brush
4	56002808	4	Nut, Hex Nyl Loc 8-32	**	56505773	2	AgLite Grit Brush
5	56002841	2	Nut, Hex Nyl Loc-Thin 3/8-16	**	56505774	2	Prolene Brush
6	56002938	6	Wsh, Flt SAE SS 5/16	**	56505775	2	ProLite Brush
7	56003001	4	Scr, Pan Phil SS 8-32 x .62	**	56505776	2	Union Mix Brush
8	56003244	2	Key, Sq. .25 x .94	**	56505777	2	MidGrit Brush
9	56003312	8	Nut, Hex Nyl Loc M12-1.75	**	56505778	2	MidLite Brush
10	56003335	2	Scr, Hex Loc SS 5/16-18 x .88	**	56182058	2	Lock Collar, Snap
11	56003338	8	Scr, Hex Loc SS 3/8-16 x .75	**	56393567	2	Lock Collar, Thrd
12	56003415	8	Scr, Hex M12-1.75 x 35mm				
13	56003477	6	Scr, Hex Loc SS M8-1 x 25mm	* = Not Shown			
14	56009107	2	Wsh, Flt SS .378 x 1.00 x .12	** = Not Included (optional)			
15	56009242	2	Wsh, Flt .406 x 1.50 x .125				
16	56152617	2	Clamp, P				
17	56328064	2	Clamp, P				
18	56355488	2	Clamp, Hose SAE #96				
19	56370878	8	Bearing, Sleeve				
20	56003120	2	Pin, Cotter Hair .09 x .375				
21	56027153	2	Motor and Gear Unit, 24V (ConvertaMAX™ 28 / BA 750)				
	56397079	2	Motor and Gear Unit, 24V (I-MAX™ 28HD)				
22	56035313	1	Weldment, Brush Head				
23	56056987	1	Shaft, Steel				
24	56172099	1	Hose, PVC Clear				
25	56396045	4	Arm				
26	56396049	1	Lift Actuator Assembly (#37-45)				
27	56396066	1	Yoke, Actuator				
28	56396080	1	Lug, Counter-Clockwise (#46-53)				
29	56396081	1	Lug Clockwise (#46-53)				
30	56396195	2	Hose, PVC				
31	56396196	8	Bushing				
32			Intentionally Omitted				
33			Intentionally Omitted				
34	56314031	2	Hub, Drive				
35	56397112	2	Shroud, Motor				
36	56397300	1	Tee, Barb				
37	56009019	2	Scr, Hex Thd Form 1/4-20 x .38				
38	56009062	4	Scr, Pan Phil Thd Form 1/4-20 x .50				
39	56393303	1	Actuator, Motor				
*	56470433	1	Carbon Brush Set				
*	56393790	2	Limit Switch				
*	56388520	1	Plastic Drive Nut				
40	56412071	1	Compression Spring				
41	56412262	1	Housing, Spring				
42	56420018	1	Compression Spring				
43	56420019	1	Nut Retainer				
44	56420020	1	Nut Retainer				
45	56396268	1	Spring Housing Guide				
46	56003405	3	Nut, Hex Nyl Loc SS M8 x 1.25				
47	56003436	3	Scr, Hex Hd SS M8-1.25 x 25mm				
48	56009030	1	Scr, Pan Phil Thd Form 10-24 x .38				
49	56009096	1	Wsh, Flt .193 x .875 x .060				
50	56407053	2	Thermoid Disk				
51	56397081	1	Spring Retainer				
52	56314030	1	Brush Holder				
53	56002938	3	Wsh, Flt SAE SS 5/16				

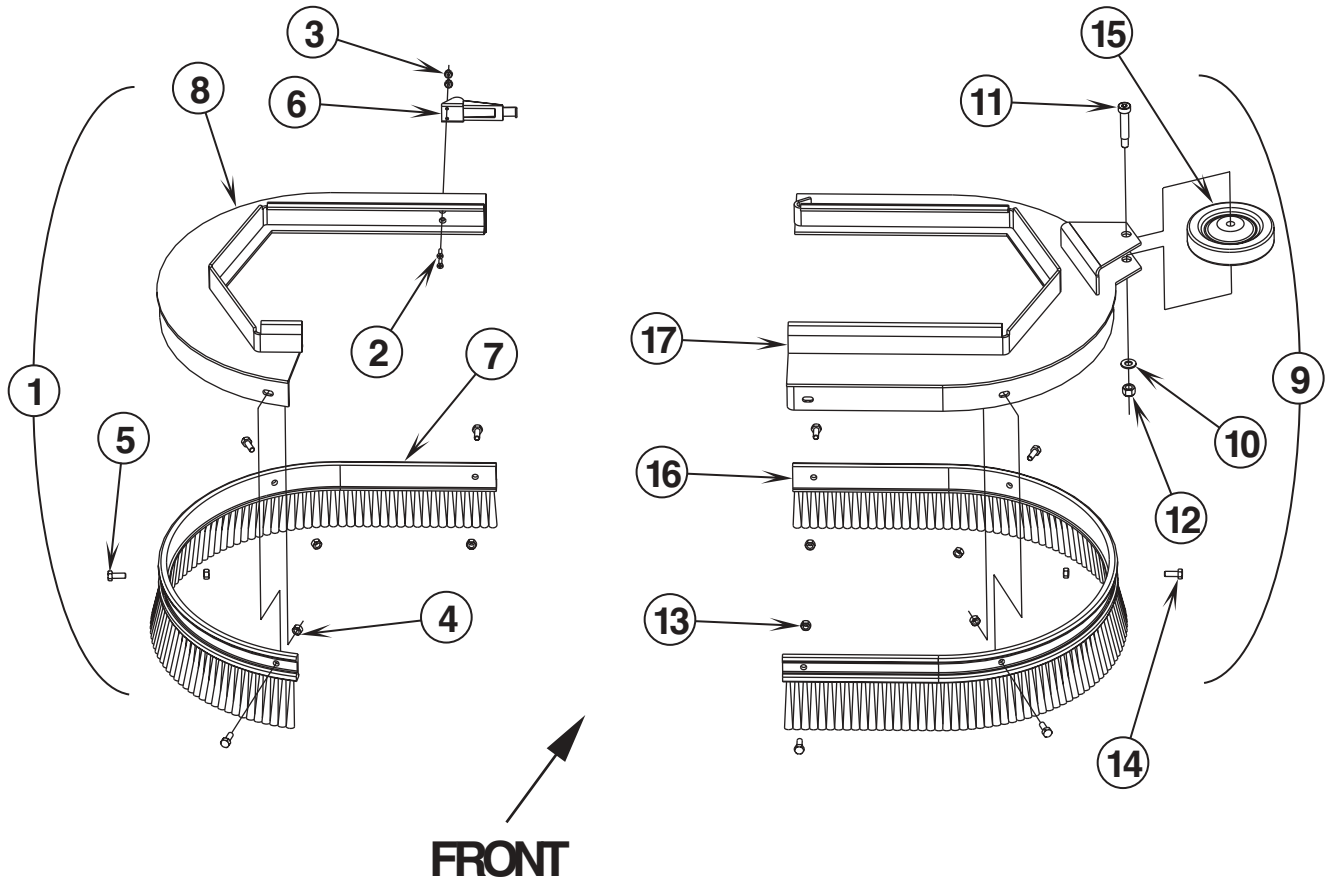




Item	Ref. No.	Qty	Description	Item	Ref. No.	Qty	Description
1	56001873	1	Scr, Hex Hd 3/8-16 x 2.50	**	56505780	2	Pad Holder
2	56001879	16	Wsh, Flt SAE 1/2	**	56505781	2	MagnaGrit Brush
3	56002684	1	Scr, Hex Hd 3/8-16 x 1.75	**	56505782	2	DynaGrit Brush
4	56002808	4	Nut, Hex Nyl Loc 8-32	**	56505783	2	AgLite Grit Brush
5	56002841	2	Nut, Hex Nyl Loc-Thin 3/8-16	**	56505784	2	Prolene Brush
6	56002938	6	Wsh, Flt SAE SS 5/16	**	56505785	2	ProLite Brush
7	56003001	4	Scr, Pan Phil SS 8-32 x .62	**	56505786	2	Union Mix Brush
8	56003244	2	Key, Sq. .25 x .94	**	56505787	2	MidGrit Brush
9	56003311	4	Scr, Hex M12-1.75 x 60mm	**	56505788	2	MidLite Brush
10	56003312	8	Nut, Hex Nyl Loc M12-1.75	**	56182058	2	Lock Collar, Snap
11	56003335	2	Scr, Hex Loc SS 5/16-18 x .88	**	56393567	2	Lock Collar, Thrd
12	56003338	8	Scr, Hex Loc SS 3/8-16 x .75				
13	56003415	4	Scr, Hex M12-1.75 x 35mm				
14	56003477	6	Scr, Hex Loc SS M8-1 x 25mm				
15	56009107	2	Wsh, Flt SS .378 x 1.00 x .12				
16	56009242	2	Wsh, Flt .406 x 1.50 x .125				
17	56152617	2	Clamp, P				
18	56328064	2	Clamp, P				
19	56355488	2	Clamp, Hose SAE #96				
20	56370878	8	Bearing, Sleeve				
21	56003120	2	Pin, Cotter Hair .091 x .375				
22	56027153	2	Motor and Gear Unit, 24V				
23	56035078	1	Weldment, Brush Head				
24	56056474	1	Shaft, Steel				
25	56172099	1	Hose, PVC Clear				
26	56396045	4	Arm				
27	56396049	1	Lift Actuator Assembly (#38-46)				
28	56396066	1	Yoke, Actuator				
29	56396080	1	Lug, Counter-Clockwise (#47-54)				
30	56396081	1	Lug Clockwise (#47-54)				
31	56396196	4	Bushing				
32	56396198	4	Bushing				
33	56314031	2	Hub, Drive				
34	56397112	2	Shroud, Motor				
35	56397300	1	Tee, Barb				
36	56397301	2	Hose, PVC				
37			Intentionally Omitted				
38	56396268	1	Spring Housing Guide				
39	56009019	2	Scr, Hex Thd Form 1/4-20 x .38				
40	56009062	4	Scr, Pan Phil Thd Form 1/4-20 x .50				
41	56393303	1	Actuator, Motor				
*	56470433	1	Carbon Brush Set				
*	56393790	2	Limit Switch				
*	56388520	1	Plastic Drive Nut				
42	56412071	1	Compression Spring				
43	56412262	1	Housing, Spring				
44	56420018	1	Compression Spring				
45	56420019	1	Nut Retainer				
46	56420020	1	Nut Retainer				
47	56002938	3	Wsh, Flt SAE SS 5/16				
48	56003405	3	Nut, Hex Nyl Loc SS M8 x 1.25				
49	56003436	3	Scr, Hex Hd SS M8-1.25 x 25mm				
50	56009030	1	Scr, Pan Phil Thd Form 10-24 x .38				
51	56009096	1	Wsh, Flt .193 x .875 x .060				
52	56407053	2	Thermoid Disk				
53	56397081	1	Spring Retainer				
54	56314030	1	Brush Holder				

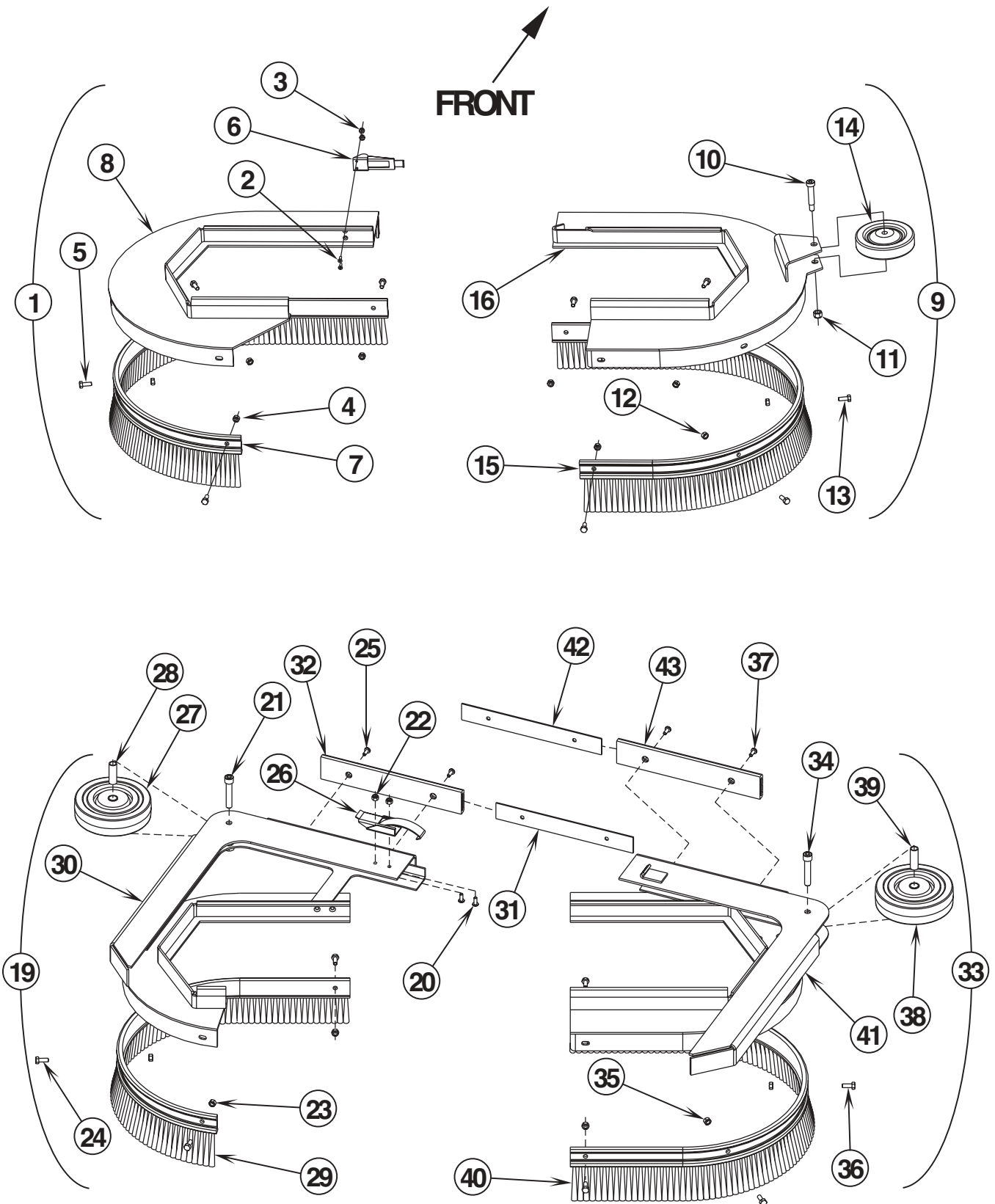
* = Not Shown
 ** = Not Included (optional)





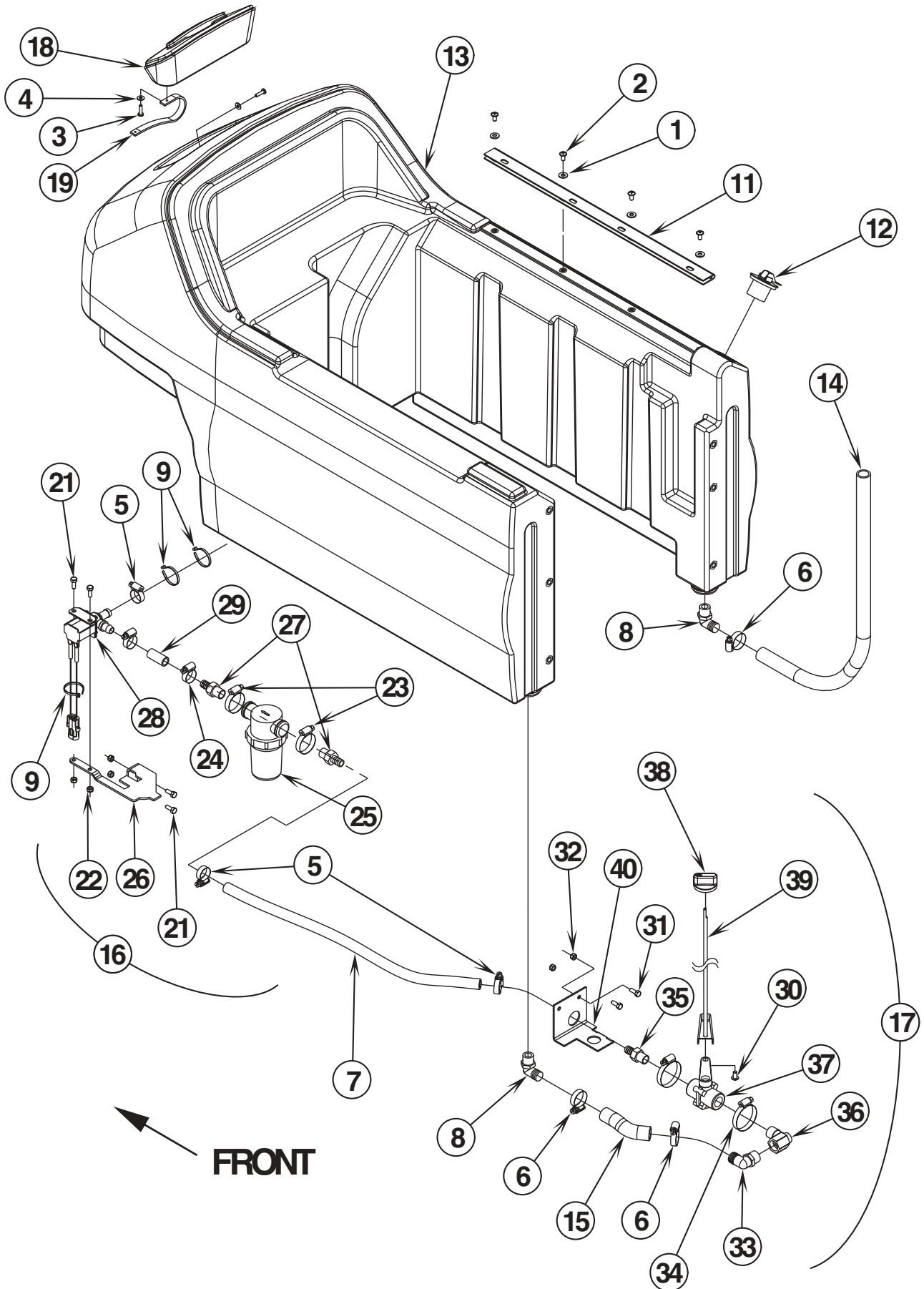
Item	Ref. No.	Qty	Description
1	56396295	1	Assembly, Brush Cover, Left (#2-8)
2	56002816	2	Scr, Flt Phil 6-32 x .50
3	56002907	2	Nut, Hex Nyl Loc SS 6-32
4	56003426	4	Nut, Hex Nyl Loc SS M6-1.00
5	56003431	4	Scr, Hex Hd SS M6-1.00 x 16mm
6	56471194	1	Latch, Assembly
7	56396087	1	Skirt, Bristle, Left 28
8	56396294	1	Weldment, Brush Cover, Left
9	56396296	1	Assembly, Brush Cover, Right (#10-16)
10	56001939	1	Wsh, Flt SAE 5/16
11	56002625	1	Scr, Soc Shd .38 x 1.50 x 2.00
12	56002701	1	Nut, Hex Nyl Loc 5/16-18
13	56003426	5	Nut, Hex Nyl Loc SS M6 x 1.0
14	56003431	5	Scr, Hex Hd SS M6-1.00 x 16mm
15	56228102	1	Wheel
16	56396088	1	Skirt, Bristle, Right 28
17	56396291	1	Weldment, Brush Cover, Right
**	56396008	1	Rubber Blade Kit

** = Optional



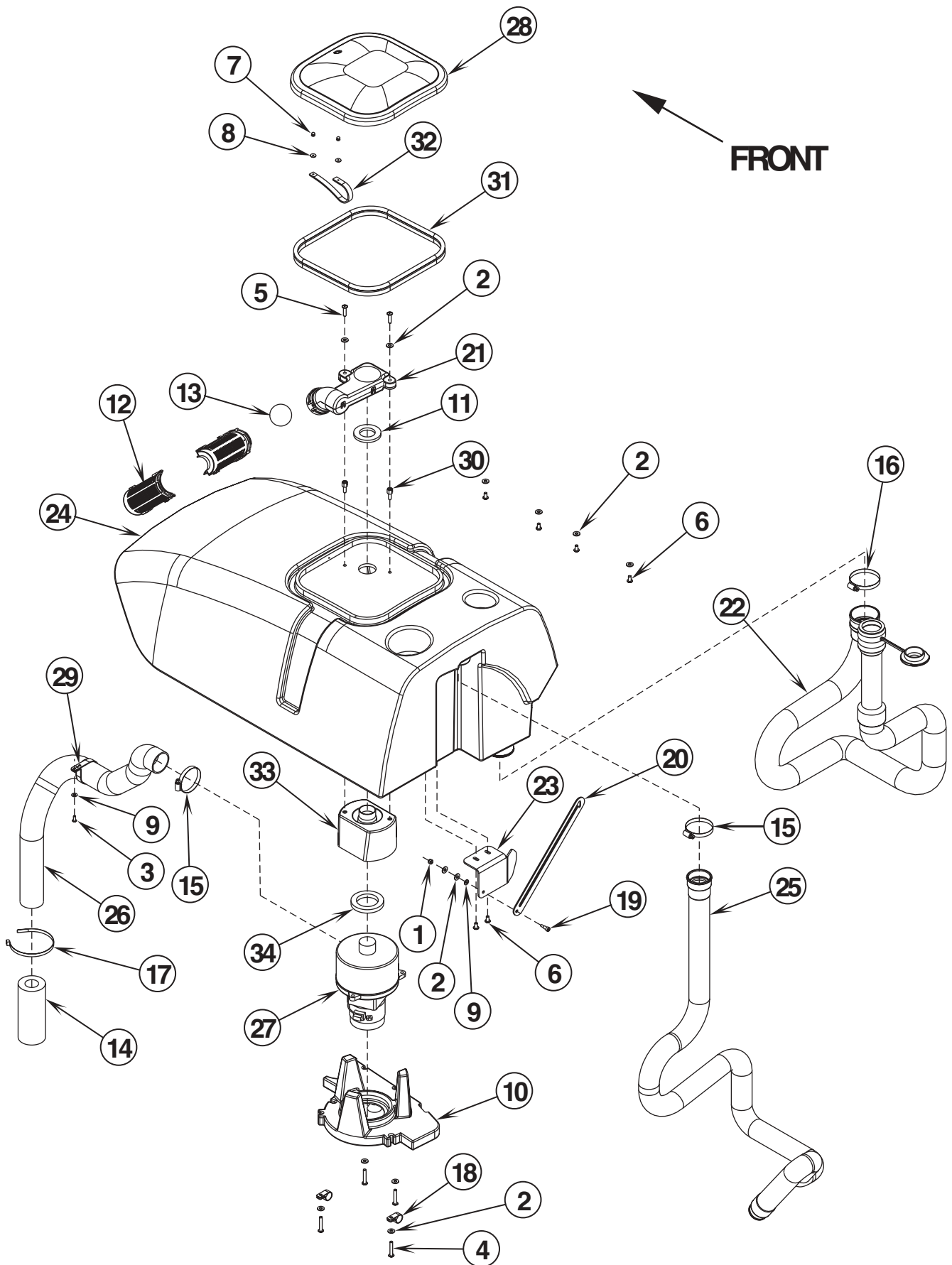
Item	Ref. No.	Qty	Description
1	56397543	1	Assembly, Brush Cover, Left (#2-8 / BA 850)
2	56002816	2	Scr, Flt Phil 6-32 x .50
3	56002907	2	Nut, Hex Nyl Loc SS 6-32
4	56003426	4	Nut, Hex Nyl Loc SS M6-1.00
5	56003431	4	Scr, Hex Hd SS M6-1.00 x 16mm
6	56471194	1	Latch, Assembly
7	56396089	1	Skirt, Bristle, Left 32
8	56397531	1	Weldment, Brush Cover, Left
9	56397544	1	Assembly, Brush Cover, Right (#10-16 / BA 850)
10	56002625	1	Scr, Soc Shd .38 x 1.50 x 5/16-18
11	56002701	1	Nut, Hex Nyl Loc 5/16-18
12	56003426	5	Nut, Hex Nyl Loc SS M6 x 1.00
13	56003431	5	Scr, Hex Hd SS M6-1.00 x 16mm
14	56228102	1	Wheel
15	56396090	1	Skirt, Bristle, Right 32
16	56397536	1	Weldment, Brush Cover, Right
17			Intentionally Omitted
18			Intentionally Omitted
19	56396129	1	Assembly, Brush Cover, Left (#20-32 / I-MAX™ 28HD)
20	56001993	2	Scr, Pan Phil 10-24 x .50
21	56002133	1	Scr, Soc Hd 3/8-16 x 2.00
22	56002768	2	Nut, Hex Nyl Loc 10-24
23	56003426	4	Nut, Hex Nyl Loc SS M6-1.00
24	56003431	4	Scr, Hex Hd SS M6-1.00 x 16mm
25	56009082	2	Scr, Pan Phil Thd Form-Blk 10-24 x .50
26	56054306	1	Clamp, Toggle Latch
27	56161691	1	Wheel, Black
28	56056684	1	Spacer, Steel
29	56396087	1	Skirt, Bristle, Left
30	56396128	1	Weldment, Brush Cover, Left
31	56396169	1	Strap
32	56396170	1	Bumper
33	56396127	1	Assembly, Brush Cover, Right (#34-43 / I-MAX™ 28HD)
34	56002133	1	Scr, Soc Hd 3/8-16 x 2.00
35	56003426	5	Nut, Hex Nyl Loc SS M6-1.00
36	56003431	5	Scr, Hex Hd SS M6-1.00 x 16mm
37	56009082	2	Scr, Pan Phil Thd Form-Blk 10-24 x .50
38	56161691	1	Wheel, Black
39	56056684	1	Spacer, Steel
40	56396088	1	Skirt, Bristle, Right
41	56396126	1	Weldment, Brush Cover, Right
42	56396169	1	Strap
43	56396170	1	Bumper
**	56396008	1	Rubber Blade Kit (I-MAX 28HD)
**	56397080	1	Rubber Blade Kit (BA 850)

** = Optional

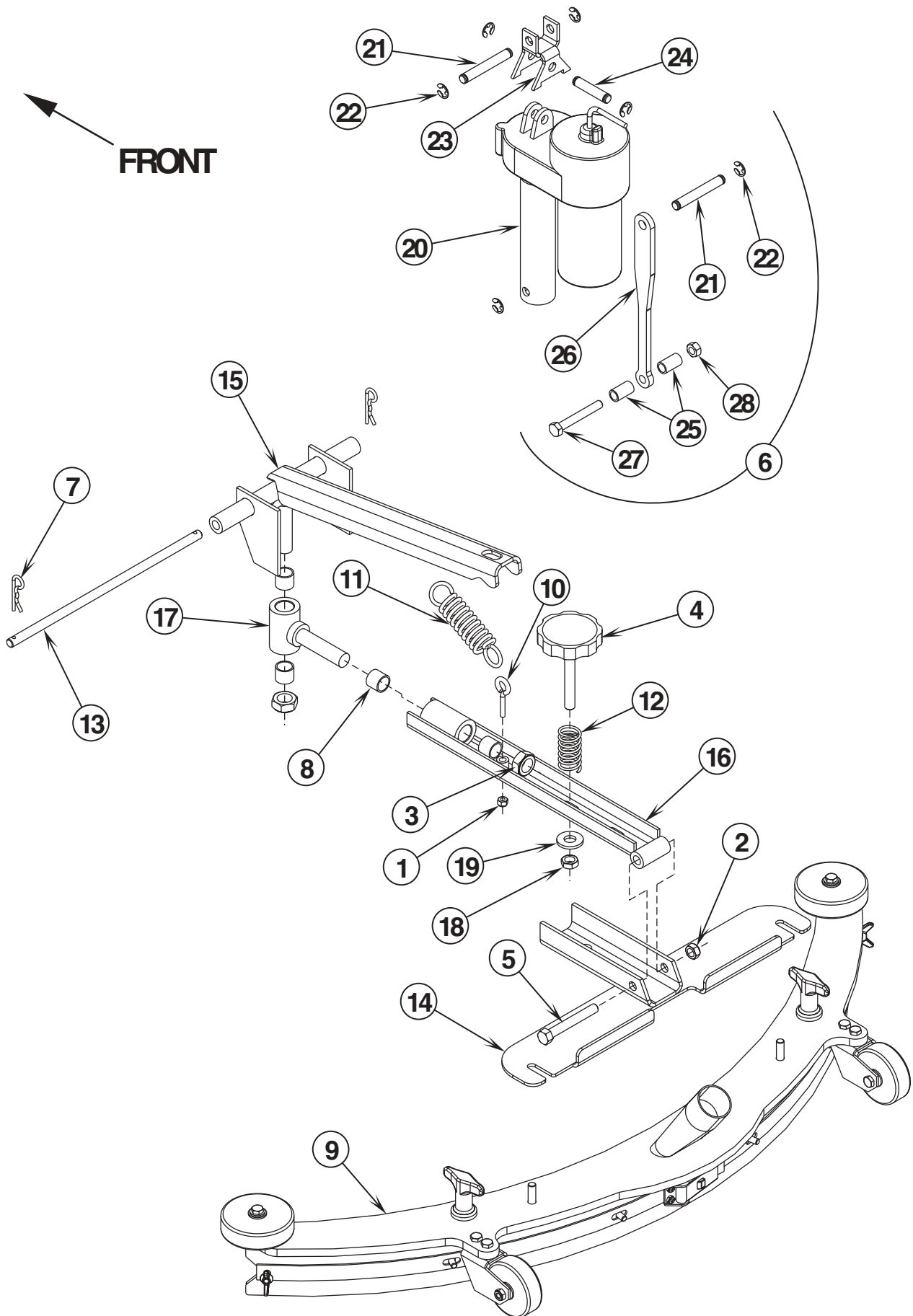


02-3	SOLUTION SYSTEM	BOOK E		
03-1	ConvertaMAX 28 / I-MAX 28HD / BA 750 / BA 850	E	12.3.1	21

Item	Ref. No.	Qty	Description
1	56002859	4	Wsh, Flt SAE SS 1/4
2	56003119	4	Scr, Pan Phil SS 1/4-20 x .50
3	56009005	2	Scr, Pan Phil SS Type B 10-16 x .75
4	56009205	2	Wsh, Flt SS #10
5	56219932	3	Clamp, Hose SAE #6
6	56244969	3	Clamp, Hose SAE #12
7	56324249	1	Hose, Spiral .50
8	56456802	2	Barb, 90 Elbow 11/16 x 3/4NPT
9	56478246	3	Tie, Cable
10	56051836	1	Hook (Not Shown)
11	56056291	1	Hinge
12	56057852	1	Plug, Expansion
13	56396024	1	Tank, Solution
14	56396143	1	Hose, .75 Clear PVC
15	56396266	1	Hose, .75 Clear PVC
16	56396277	1	Assembly, Filter (# 21-29) TSBUS2003-835
	56396096	1	Assembly, Filter (#21-29) TSBUS2003-835
17	56396309	1	Assembly, Ball Valve (#30-40)
18	56397021	1	Lid, Solution
19	56397167	1	Strap, Retaining
21	56003174	4	Scr, Hex Thd To Hd M6-1.00 x 16mm
22	56003403	4	Nut, Hex Nyl Loc M6-1.00
23	56131601	2	Clamp, Hose SAE #16
24	56219932	2	Clamp, Hose SAE #6
25	56260905	1	Strainer TSBUS2003-835
	56412173	1	Solution Filter TSBUS2003-835
26	56396068	1	Filter Bracket
27	56397145	2	Barb, Hose Female TSBUS2003-835
	56412184	2	Barb, Adapter 1/2 x 1/2NPT TSBUS2003-835
28	56397203	1	Solenoid Valve Assembly
29	56396330	1	Hose, PVC Clear TSBUS2003-835
	56397217	1	Hose, PVC Clear TSBUS2003-835
30	56003119	1	Scr, Pan Phil SS 1/4-20 x .50
31	56003174	2	Scr, Hex Thd To Hd M6-1.00 x 16mm
32	56003403	2	Nut, Hex Nyl Loc M6-1.00
33	56244985	1	Barb, 90 Elbow 3/4 x 1/2NPT
34	56329145	2	Clamp, Hose SAE #24
35	56412184	1	Barb, Adapter 1/2 x 1/2 NPT
36	56055071	1	Street Elbow
37	56057830	1	Valve, Ball
38	56396201	1	Knob
39	56396310	1	Flow Valve Weldment
40	56396314	1	Bracket, Water Valve

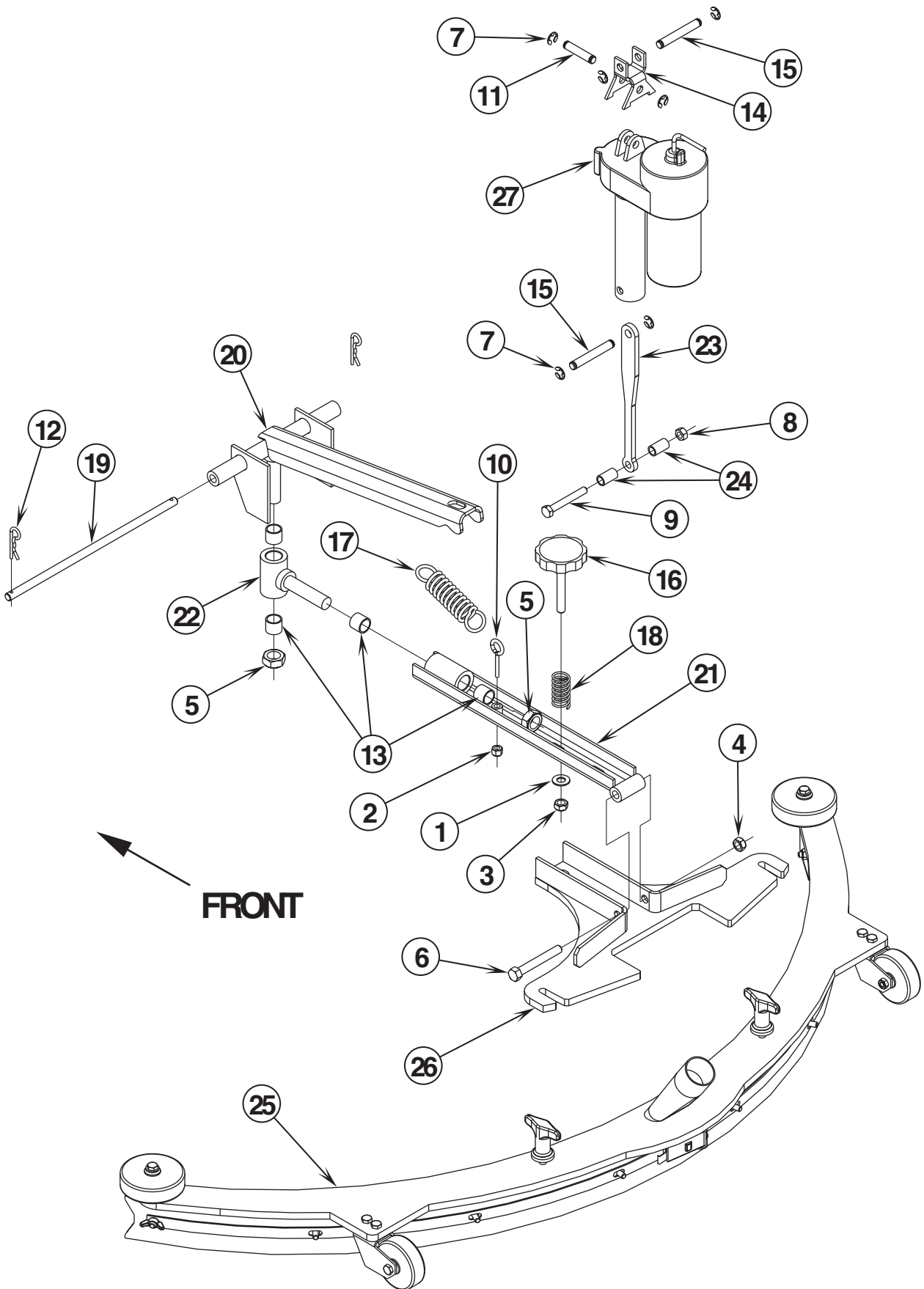


Item	Ref. No.	Qty	Description
1	56002768	1	Nut, Hex Nyl Loc 10-24
2	56002859	12	Wsh, Flt SAE SS 1/4
3	56002900	1	Scr, Pan Phil SS 10-24 x .50
4	56002905	4	Scr, Pan Phil SS 1/4-20 x 1.50
5	56003067	2	Scr, Pan Phil SS 1/4-20 x 1.00
6	56003119	6	Scr, Pan Phil SS 1/4-20 x .50
7	56003293	2	Rivet, Pop A/S .125 x .38 / .50
8	56009098	2	Wsh, Flt SS .125 x .50 x .036
9	56009205	2	Wsh, Flt SS #10
10	56302141	1	Vac Motor Duct
11	56302165	1	Gasket
12	56324497	2	Cage, Float
13	56391690	1	Ball, Float
14	56391807	1	Foam, Acoustical
15	56440213	2	Clamp, Hose SAE #32
16	56456797	1	Clamp, Hose SAE #36
17	56477613	1	Tie, Cable
18	56486112	2	Clamp, P
19	56003537	1	Scr, Soc Shd .25 x .38 x 10-24
20	56057508	1	Bar, Steel
21	56302142	1	Float Duct
22	56396031	1	Drain Hose
23	56396148	1	Bracket, Pivot
24	56396224	1	Tank, Recovery (ConvertaMAX™ 28 / I-MAX 28HD)
	56396223	1	Tank, Recovery (BA 750 / BA 850)
25	56396287	1	Vac Hose Assembly
26	56397040	1	Hose, Vac Exhaust
27	56397041	1	Vac Motor Assembly
	56397098	1	Carbon Brush Set
28	56397045	1	Lid
29	56397095	1	Clamp, Hose
30	56397096	2	Spacer Bolt
31	56397151	1	Gasket
32	56397167	1	Strap, Retaining
33	56397303	1	Spacer, Vac Motor
34	56397307	1	Gasket, Vac



Item	Ref. No.	Qty	Description
1	56002708	1	Nut, Hex Nyl Loc 1/4-20
2	56002852	1	Nut, Hex Nyl Loc-Thin SS 3/8-16
3	56002855	2	Nut, Hex Nyl Loc-Thin SS 5/8-11
4	56035163	1	Knob
5	56002903	1	Scr, Hex Hd SS 3/8-16 x 2.75
6	56396055	1	Actuator Assembly (items 20-28)
7	56003120	2	Pin, Cotter Hair
8	56367389	4	Bearing, Sleeve
9	56391281	1	Squeegee Assembly (ConvertaMAX™ 28 / BA 750 / see associated pages)
	56396132	1	Squeegee Assembly (I-MAX™ 28HD / see associated pages)
10	56009220	1	Eye Bolt 1/4-20
11	56051136	1	Spring, Ext.
12	56056585	1	Spring, Comp.
13	56056977	1	Shaft, Steel
14	56396053	1	Weldment, Squeegee Mount
15	56396061	1	Weldment, Squeegee Lift
16	56396076	1	Squeegee Bar Weldment
17	56396085	1	Squeegee Pivot Weldment
18	56002841	1	Nut, Hex Nyl Loc-Thin 3/8-16
19	56002063	1	Wsh, Flt SAE 3/8
20	56412072	1	Actuator, Motor
*	56470433	1	Carbon Brush Set
*	56393790	2	Limit Switch
21	56412088	2	Pin
22	56003262	6	Ring, Ret Ext Type E .38 Dia.
23	56392454	1	Yoke, Actuator
24	56104760	1	Pin
25	56397286	2	Spacer
26	56396215	1	Link
27	56003464	1	Scr, Hex Hd SS M8-1.25 x 60MM
28	56003405	1	Nut, Hex Nyl Loc SS M8 x 1.25

* = Not Shown

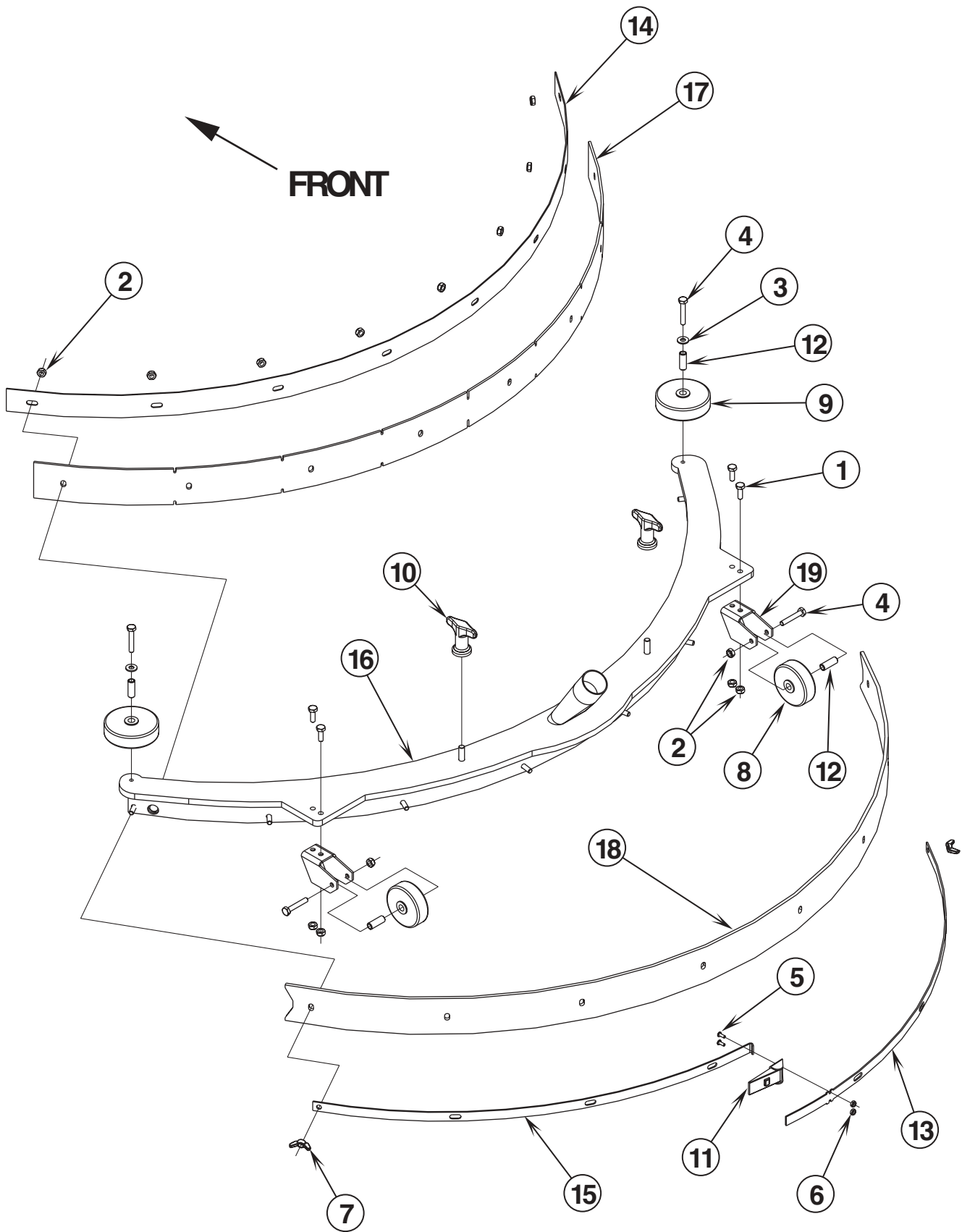


02-3	SQUEEGEE SYSTEM (BA 850)	BOOK E		
02-5	ConvertaMAX 28 / I-MAX 28HD / BA 750 / BA 850	E	12.3.1	27

Item	Ref. No.	Qty	Description
1	56002063	1	Wsh, Flt SAE 3/8
2	56002708	1	Nut, Hex Nyl Loc 1/4-20
3	56002841	1	Nut, Hex Nyl Loc-Thin 3/8-16
4	56002852	1	Nut, Hex Nyl Loc-Thin SS 3/8-16
5	56002855	2	Nut, Hex Nyl Loc-Thin SS 5/8-11
6	56002903	1	Scr, Hex Hd SS 3/8-16 x 2.75
7	56003262	6	Ring, Ret Ext Type E 0.38 Dia
8	56003405	1	Nut, Hex Nyl Loc SS M8 x 1.25
9	56003464	1	Scr, Hex Hd SS M8-1.25 x 60MM
10	56009220	1	Bolt, Eye 1/4-20 x 1.38
11	56104760	1	Pin
12	56003222	2	Pin, Cotter Hair .125 x diam. .50/.75
13	56367389	4	Bearing, Sleeve
14	56392454	1	Yoke, Actuator
15	56412088	2	Pin
16	56035163	1	Assembly, Knob, Adjustment
17	56051136	1	Spring, Ext
18	56056585	1	Compression Spring
19	56056977	1	Shaft Stl.
20	56396061	1	Weldment Squeegee Lift-27
21	56396076	1	Squeegee Bar Weld't
22	56396085	1	Squeegee Pivot Weld't
23	56396215	1	Link
24	56397286	2	Spacer
25	56397349	1	Squeegee Assembly (see associated pages)
26	56397356	1	Mounting Plate Weldment
27	56412072	1	Actuator, Motor

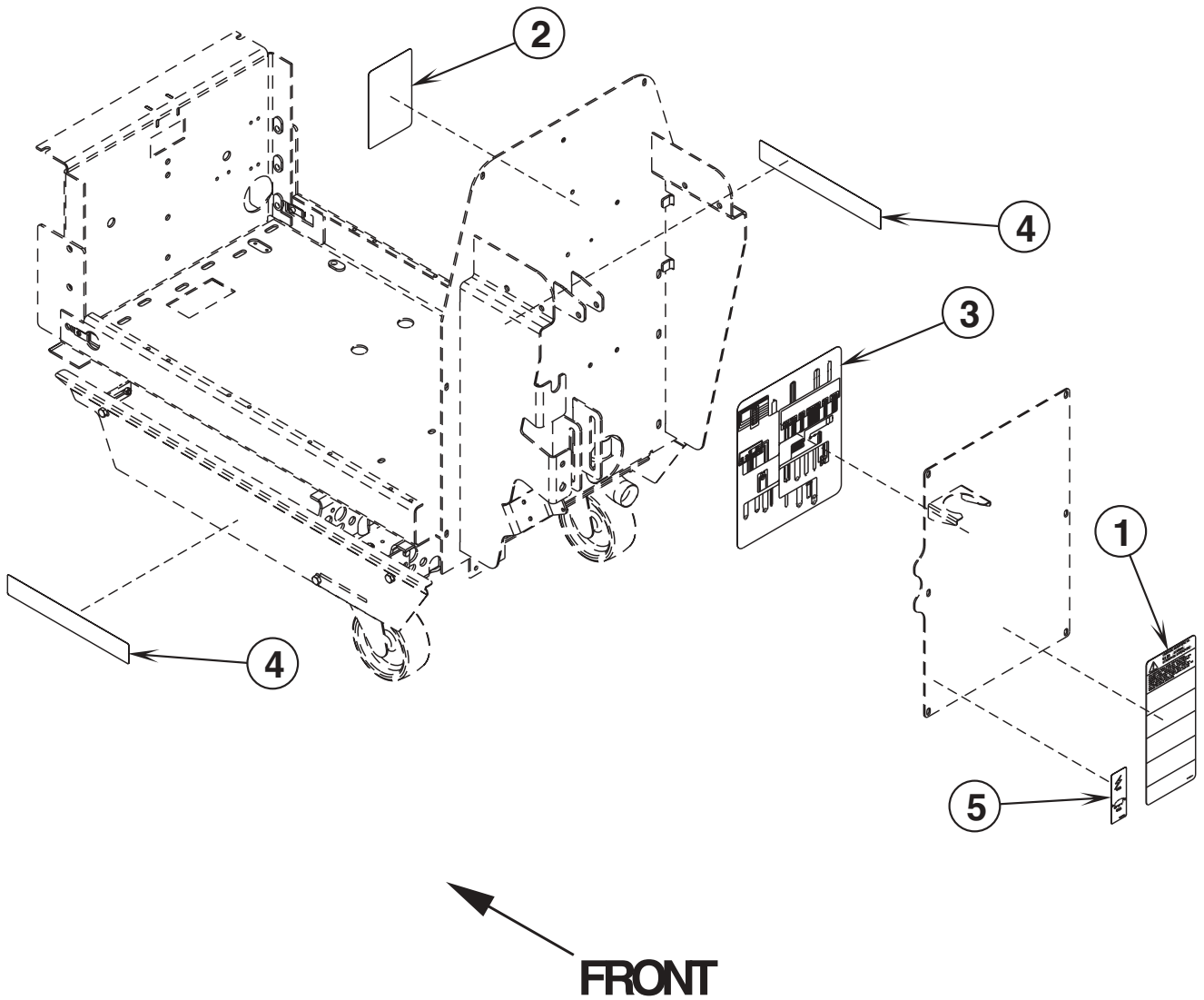
Item	Ref. No.	Qty	Description
1	56002807	4	Scr, Hex Hd SS 1/4-20 x .75
2	56002850	12	Nut, Hex Nyl Loc-Thin SS 1/4-20
3	56002859	2	Wsh, Flt SAE SS 1/4
4	56002901	4	Scr, Hex Hd SS 1/4-20 x 1.50
5	56002909	2	Scr, Pan Phil SS 6-32 x .38
6	56002964	2	Nut, Hex Nyl Loc-Thin SS 6-32
7	56009048	2	Nut, Wing Loc 1/4-20
8	56324350	2	Wheel
9	56324499	2	Wheel 3.00
10	56370711	2	Nut, Thumb
11	56391286	1	Strap, Rear Right
12	56391288	1	Strap, Rear Left
13	56391290	1	Strap, Front
14	56391292	1	Tool Weldment
15	56409656	2	Bracket, Wheel
16	56471194	1	Latch
17	56471220	4	Bushing, .25 x .37 x 1.00
18	56391333	1	Blade, Rear (ConvertaMAX™ 28 / BA 750)
	56396130	1	Blade, Rear (I-MAX™ 28HD)
19	56391334	1	Blade, Front (ConvertaMAX™ 28 / BA 750)
	56396131	1	Blade, Front (I-MAX™ 28HD)
**	56391340	1	Standard Blade Kit (Gum Rubber)
**	56391342	1	Oil Resistant Blade Kit (Neoprene)
**	56396172	1	Linatex Blade Kit
**	56397325	1	Blade, Front-Tile Gum
**	56397326	1	Blade, Front-Tile Linatex

** = Optional

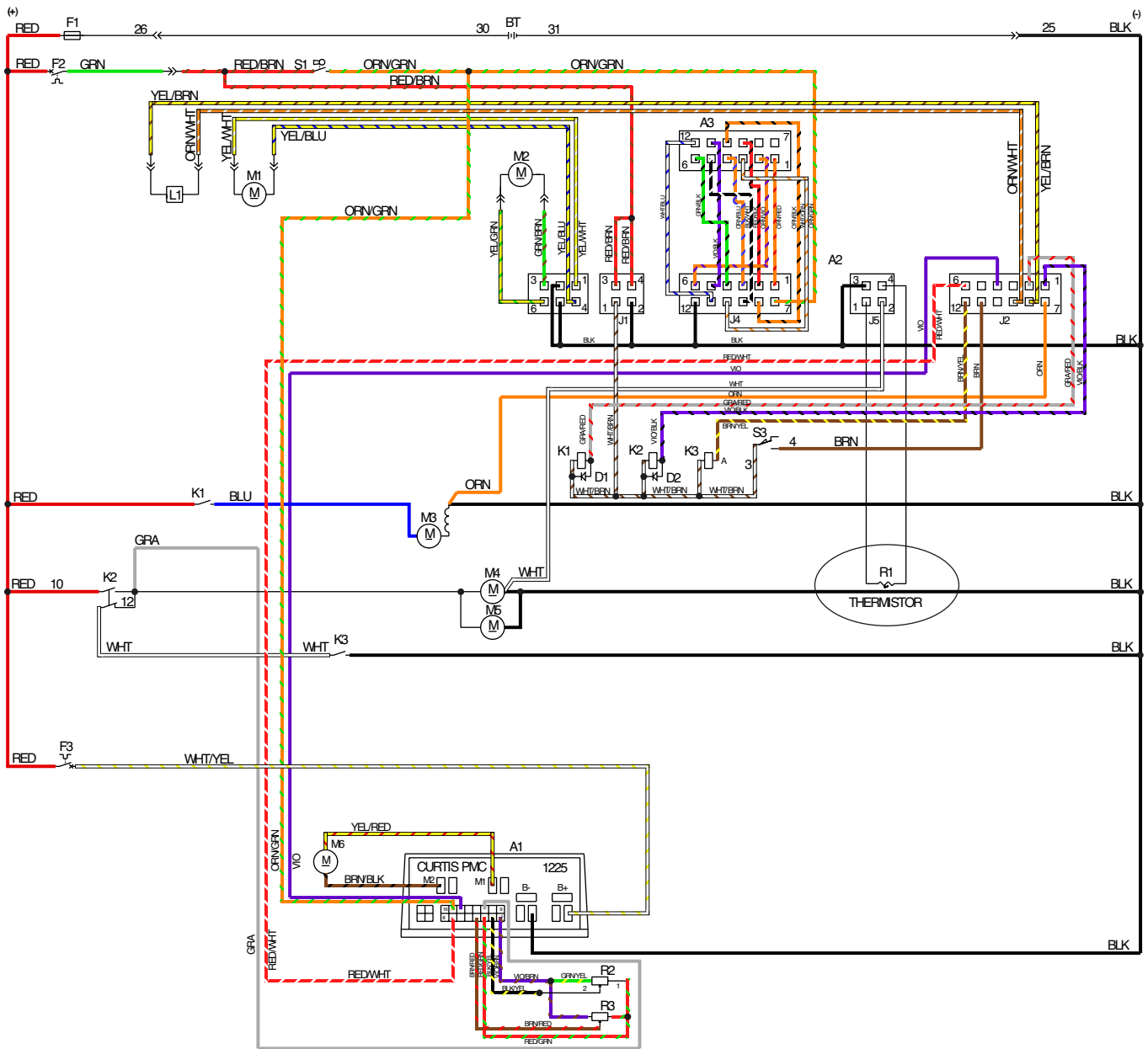


Item	Ref. No.	Qty	Description
	56397349	1	Squeegee Assembly
1	56002807	4	Scr, Hex Hd SS 1/4-20 x .75
2	56002850	14	Nut, Hex Nyl Loc-Thin SS 1/4-20
3	56002859	2	Wsh, Flt SAE SS 1/4
4	56002901	4	Scr, Hex Hd SS 1/4-20 x 1.50
5	56002909	2	Scr, Pan Phil SS 6-32 x .38
6	56002964	2	Nut, Hex Nyl Loc-Thin SS 6-32
7	56009048	2	Nut, Wing Loc 1/4-20
8	56324350	2	Wheel
9	56324499	2	Wheel 3.00
10	56370711	2	Nut, Thumb
11	56471194	1	Latch Assembly
12	56471220	4	Bushing .25 x .37 x 1.0
13	56397353	1	Strap, Rear
14	56397354	1	Strap, Front
15	56397355	1	Strap, Rear
16	56397359	1	Squeegee Tool Weldment
17	56397362	1	Blade, Front
18	56397363	1	Blade, Rear
19	56409656	2	Bracket, Wheel
**	56397094	1	Blade Kit Gum (contains one 56397363 & 56397362)
**	56397106	1	Blade Kit Linatex (contains one 56397091 & 56397089)
**	56397147	1	Blade, Front-Tile Gum
**	56397148	1	Blade, Front-Tile Linatex
**	56397595	1	Blade Kit – Oil Resistant

** = Optional

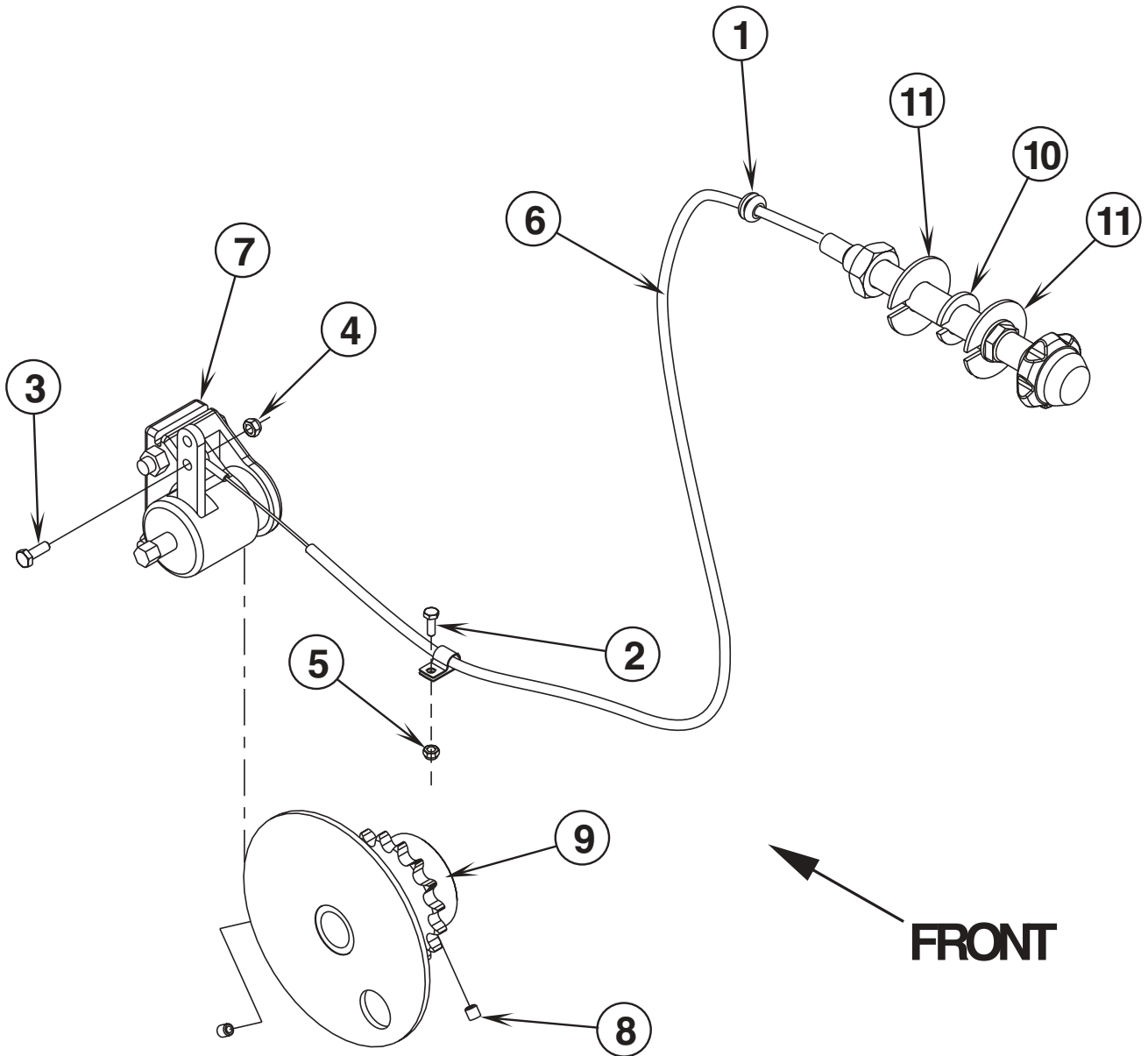


Item	Ref. No.	Qty	Description
1	56014601	1	Decal, Caution
2	56016486	1	Decal, Battery Wiring
3	56016320	1	Decal, Electrical Schematic
4	56016488	2	Decal, ConvertaMAX 28 (ConvertaMAX™ 28)
	56016489	2	Decal, I-MAX 28HD (I-MAX™ 28HD)
	56016490	2	Decal, BA750 (BA750)
	56016491	2	Decal, BA850 (BA850)
5	56016666	1	Decal, Circuit Breaker



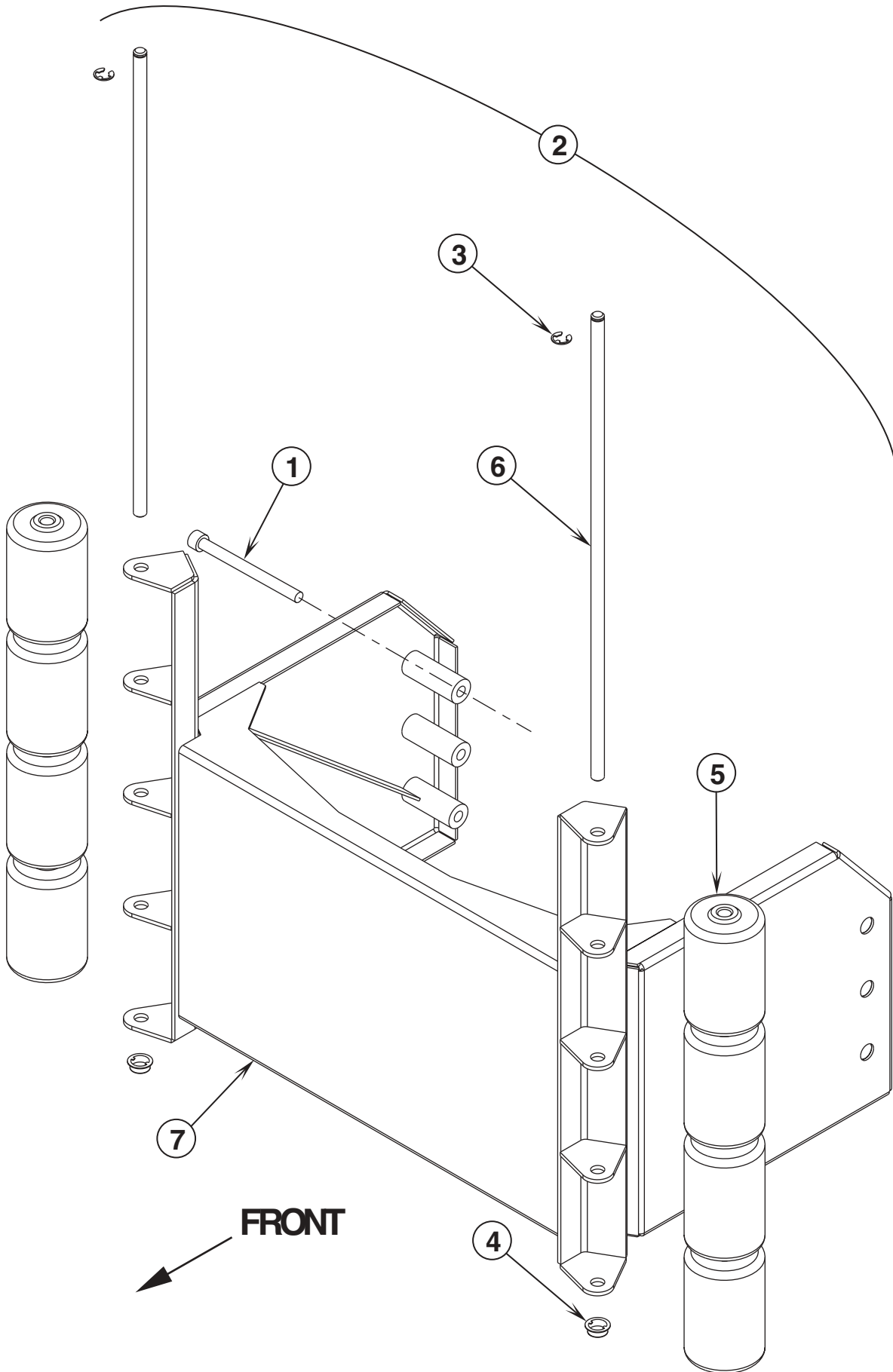
Item	Ref. No.	Qty	Description
A1	56396185	1	Controller, 24V
A2	56396009	1	Control Assy
A3	56396161	1	Display Panel Assembly
BT	N/A		Battery (24V system)
D1	56389265	1	Diode
D2	56389265	1	Diode
F1	56412089	1	Fuse, 150 Amp
F2	56387316	1	Circuit Breaker 10 Amp (Control Circuit)
F3	56452193	1	Circuit Breaker 40 Amp (Wheel Drive)
K1	56412179	1	Contactor, 24 VDC (Vac Motor)
K2	56397088	1	Contactor, 24V, SPDT (Brush Motor)
K3	56396038	1	Relay, SPST, 24V (Brush Remove)
L1	56397203	1	Solenoid Valve
M1	56393303	1	Actuator, Motor (Brush Lift)
*	56470433	1	Carbon Brush Set
*	56393790	2	Limit Switch
*	56388520	1	Plastic Drive Nut
*	56396268	1	Spring Housing Guide
M2	56412072	1	Actuator, Motor (Squeegee Lift)
*	56470433	1	Carbon Brush Set
*	56393790	2	Limit Switch
M3	56397041	1	Vac Motor Assembly
*	56397098	1	Carbon Brush Set
M4	56027153	1	Motor and Gear Unit, 24V (3/4 HP) (ConvertaMAX™ 28 / BA 750 / BA 850)
	56397079	1	Motor and Gear Unit, 24V (1 HP) (I-MAX™ 28HD)
M5	56027153	1	Motor and Gear Unit, 24V (3/4 HP) (ConvertaMAX™ 28 / BA 750 / BA 850)
	56397079	1	Motor and Gear Unit, 24V (1 HP) (I-MAX™ 28HD)
M6	56396209	1	Motor and Gear Unit, 24V (Wheel Drive)
R1		1	Thermistor (part of Cable Assy 56396184)
R2	56396197	1	Potentiometer, 100K (Speed Control)
R3	56397029	1	Potentiometer, 5K (Forward / Reverse)
S1	56396188	1	Switch, Key
S3	56263174	1	Switch, Snap SPDT (Squeegee Reverse)
10	56396194	1	Cable Assembly 4 AWG
12	56396193	1	Cable Assembly 4 AWG
*	56396234	1	Harness, Handle Wiring
*	56396183	1	Harness, Main Wiring
*	56372673	8	Boot, Battery Post
*	56416445	3	Cable Assembly (Battery Cables)
*	56398090	8	Terminal Clamp Battery
*	56396203	1	Connector Assembly (Connected to Machine)
25	56448770	29"	Cable, BLK
26	56900811	26"	Cable, RED
*	56100621	1	Connector Housing
*	56100686	2	#1 Contact
*	56420052	2	Terminal Ring
*	56396202	1	Connector Assembly TSBUS2003-841 (Connect to Batteries)
30	56900811	31"	Cable, RED
31	56448770	31"	Cable, BLK
*	56100621	1	Connector Housing
*	56100686	2	#1 Contact
*	56478617	2	Terminal Ring

* = Not Shown



Item	Ref. No.	Qty	Description
	56396323	1	Kit, Parking Brake
1	56321559	1	Grommet
2	56002503	1	Scr, Hex Hd 10-24 x .50
3	56003358	1	Scr, Hex M6-1.00 x 25mm
4	56003403	1	Nut, Hex Nyl Loc M6-1.00
5	56002768	1	Nut, Hex Nyl Loc 10-24
6	56056323	1	Cable, Brake Assembly
7	56056245	1	Brake, Mechanical Caliper
8	56001826	2	Scr, Soc Set Loc 5/16-18 x .50
9	56396036	1	Sprocket Weldment
10	56396329	1	Plate, Brake Align
11	56396328	2	Plate, Brake Mount
*	56040768	1	Instruction Sheet

* = Not Shown



02-3	HIGH TOWER ROLLER BUMPER KIT	BOOK E		
02-11	ConvertaMAX 28 / I-MAX 28HD / BA 750 / BA 850	E	12.3.1	39

Item	Ref. No.	Qty	Description
	56396307	1	Kit, Industrial Bumper
1	56003542	6	Scr, Soc Hd 3/8-16 x 3.00
2	56396134	1	Assembly, Industrial Bumper (#3-7)
3	56003264	2	Ring, Ret Ext Type E .50 dia
4	56009097	2	Nut, Push Cap 1/2
5	56392102	8	Roller
6	56392809	2	Rod
7	56396133	1	Weldment, Bumper Industrial
*	56040764	1	Instruction Sheet

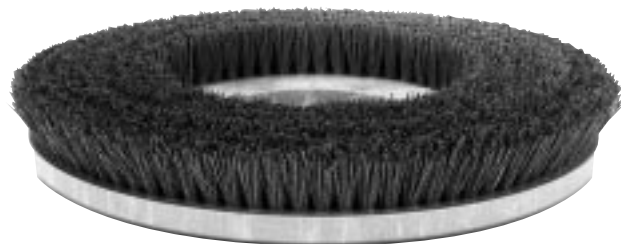
* = Not Shown

We manufacture brushes and pad holders that will give you the best possible performance between machine and floor. Following are descriptions of the materials and their applications when used on the BA750 / BA850.

- Union Mix:** Medium grade natural fibers for polishing finished floors with standard-speed equipment. Recommended for use in place of white pads.
- ProLite:** Bristles are made from light-duty polypropylene for general scrubbing when you do not want to scratch or remove finish from the floor. Recommended for use in place of red pads.
- Prolene:** Polypropylene material for medium-duty scrubbing on concrete, terrazzo and vinyl floor tile. Recommended for use in place of green or blue pads.
- Magna Grit:** For extreme heavy-duty scrubbing or stripping of floors. This brush has extra large diameter silicon carbide grit impregnated synthetic bristles. Recommended for use in place of black pads.
- Dyna Grit:** For aggressive, heavy-duty scrubbing or stripping of floors. Recommended for use in place of brown pads.
- MidLite Grit:** For general purpose scrubbing of sealed or unsealed concrete, stone, terrazzo, quarry tile and other resilient hard floor surfaces. Recommended for use in place of green or blue pads.
- MidGrit:** For general purpose scrubbing when you need a lighter action for sealed or unsealed concrete, stone, terrazzo, quarry tile and other resilient hard floor surfaces. Recommended for use in place of green or blue pads.
- AgLite Grit:** For light scrubbing when used wet; buffing or polishing when used dry on urethane coated, sealed concrete or other resilient hard surface floors. Recommended for use in place of red or white pads.
- Short Trim Pad Holder:** Made with a structural foam block and center ring for correct pad centering. It has a "shower feed" design for getting solution to the floor.

- Ref. No.:**
- BA750 BRUSHES**
 - 56505770 - Pad Holder
 - 56505771 - Magna Grit
 - 56505772 - Dyna Grit
 - 56505773 - AgLite Grit
 - 56505774 - Prolene
 - 56505775 - ProLite
 - 56505776 - Union Mix
 - 56505777 - Mid Grit
 - 56505778 - MidLite Grit

- Ref. No.:**
- BA850 BRUSHES**
 - 56505780 - Pad Holder
 - 56505781 - Magna Grit
 - 56505782 - Dyna Grit
 - 56505783 - AgLite Grit
 - 56505784 - Prolene
 - 56505785 - ProLite
 - 56505786 - Union Mix
 - 56505787 - Mid Grit
 - 56505788 - MidLite Grit



DANMARK

Nilfisk-Advance Nordic A/S
Sognevej 25 - Box 344
DK-2605 Broendby
☎ 43 23 83 50 – Fax 43 42 15 95

NORGE

Nilfisk-Advance AS
Enebakkvn, 119, 0680 Oslo, Postboks 196, Manglerud,
0612 Oslo
☎ 22 08 63 50 – Fax 22 08 63 63
Distriktsrepresentanter over hele landet

SVERIGE

Nilfisk-Advance AB
Sjöbjörnsvägen 5, 117 67 Stockholm
☎ 085 55 944 00 – Fax 085 55 944 30

FINLAND/ SUOMI

BERNER Ltd. Facotek Department
Etäläranta 4B, 00130 Helsinki
☎ +358 9 1345 1382

AUSTRALIA

Nilfisk-Advance Pty. Ltd.
48 Egerton Street
Silverwater NSW 2128
☎ (02) 8748 5905 – Fax (02) 9648 2711
Customer Responce Centre:
☎ 1 800 011 013

BELGIQUE / BELGIË/ LUXEMBOURG

Nilfisk-Advance s.a./n.v.
Doornveld/ Sphere Business Park
Industrie Asse 3, nr 11 – bus 41
1731 Zellik-Asse
☎ (02) 467.60.50 Fax (02) 463.44.16

CANADA

Nilfisk-Advance Ltd.
396 Watline Avenue
Mississauga, Ontario L4Z 1X
☎ (905) 712-3260 – Fax (905) 712-3255

DEUTSCHLAND

Nilfisk-Advance AG
Siemensstraße 25-27
25462 Rellingen
☎ (041 01) 3990 – Fax (04101) 399191
Zentraler Kundenservice
☎ für die Industrie: 0180 535 67 97
☎ Institutionen und Gebäudereinger: 0180 500 11 70

FRANCE

Nilfisk-Advance S.A.
BP 246
91944 Courtaboeuf Cedex
☎ (01) 69.59.87.00 Télécopie (01) 69.59.87.01

HONG KONG

Nilfisk-Advance Ltd.
2001, 20/F HK Worsted Mills
Industrial Building
31-39 Wo Tong Tsui Street
Kwai Chung, N.T.
☎ 2427 59 51 – Fax 2487 5828

IRELAND

Nilfisk-Advance Ltd.
28 Sandyford Office Park
Dublin 18
☎ +353 1 2943838 – Fax +353 1 2943845

JAPAN

Nilfisk-Advance Inc.
3-4-9 Chigasaki Minami
Tsuzuki-Ku Yokohama 224 0037
☎ 045-942-7741 – Fax 045-942-6545

MALAYSIA

Nilfisk-Advance Sdn Bhd
Lot 2, 1st. Floor
Lorong 19/1A
46300 Petaling Jaya
Selangor Darul Ehsan
☎ 03-7568188 /03-7568189 /03-7568388 – Fax 03-7566828

NEDERLAND

Nilfisk-Advance B.V.
Flevolaan 7, Postbus 341
1380 AH Weesp
☎ 0294-462121 – Fax 0294-430053

NEW ZEALAND

Nilfisk-Advance Limited
477 Great South Road, Penrose
Auckland
☎ (09) 525 0092 – Fax (09) 525 6440

SCHWEIZ / SUISSE

Nilfisk-Advance AG
Ringstrasse 19, 9533 Kirchberg/Wil
☎ 719 23 52 83 – Fax 719 23 84 44

SINGAPORE

Nilisk-Advance Pte. Ltd.
22, Woodlands Industrial Park E1
Singapore 757740
☎ (65) 759 9100 – Fax (65) 759 9133

TAIWAN

Nilfisk-Advance Ltd.
1 F, No.23, Lane 132, Sec. 2
Ta An Road, Taipei
☎ 700 22 68 – Fax 784 08 43

UNITED KINGDOM

Nilfisk-Advance Limited
Newmarket Road
Bury St. Edmunds
Suffolk IP 33 3SR
☎ (01284) 763163 – Fax (01284) 750562

USA

Nilfisk-Advance Inc.
14600 21st Avenue North
Plymouth, MN 55447-3408
☎ +1 800 989 2235 – Fax 1 800 989 6566

Nilfisk-Advance of America, Inc.
300 Technology Drive
Malvern, PA 19355
☎ (610) 647 647-6427

ÖSTERREICH

Nilfisk-Advance GmbH
Vorarlberg Allee 46
1230 Wien
☎ 1 616 58 30 – Fax 1 616 58 30 40

ESPAÑA

Nilfisk-Advance, S.A.
Torre D'Ara
Passeig del Rengle, 5 Pl.9-10
E-08302 – Mataró (Barcelona)
☎ Tel. 93 741 24 00 – Fax: 93 757 80 20
Central atención al cliente: 902 200 201
nilfisk@nilfisk-advance.es – www.nilfisk-advance.com
Distribuidores y Servicio Técnico en toda España y Andorra

ITALIA

Nilfisk-Advance Italia Spa
Località Novella Terza
26862 Guardamiglio (LO)
Italy
☎ +39 0377 414067-54 – Fax +39 0377 414097
www.nilfisk-advance.com

PORTUGAL

Nilfisk-Advance Lda.
Rua Cândido de Figueiredo, 91-i, 1500-133 LISBOA
☎ 01/7784142 – Fax 01/7785613
Porto 02/526766 – Fax 02/520739
Açores 096/628092/3 – Fax 096/628129
Madeira 091/228965 – Fax 091/228796

GREECE

Embiom S.A.
Λεωφ. Βουλιαγμένης 60
Αργυρούπολη
164 52 Αθήνα
☎ 9950613 - Fax 9951680



Material composition of the Nilfisk BA750/850

