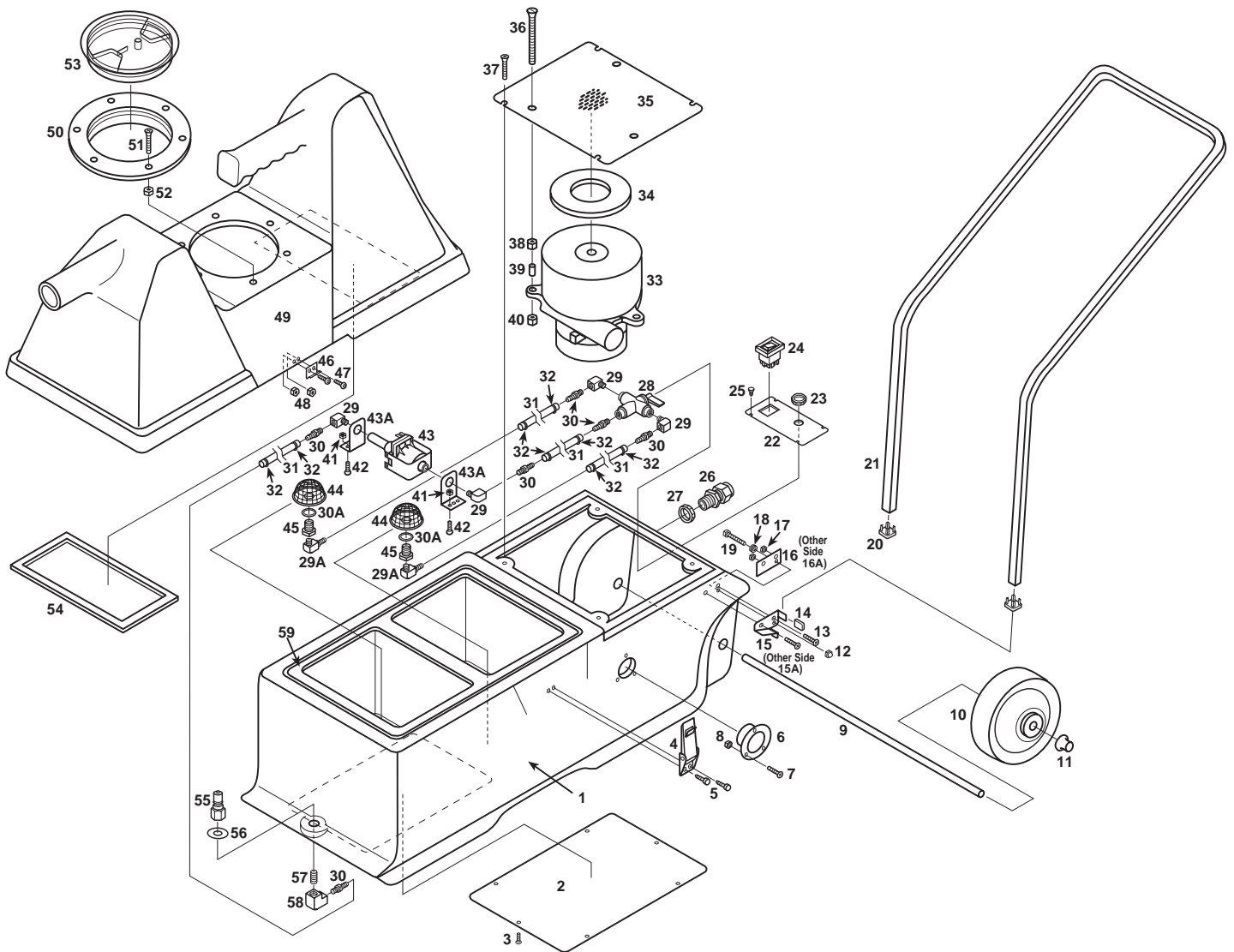


# PREDATOR CX3 SPOTTER



# PREDATOR CX3 SPOTTER PARTS LIST

<u>ITEM #</u>	<u>PART #</u>	<u>DESCRIPTION</u>	<u>ITEM #</u>	<u>PART #</u>	<u>DESCRIPTION</u>
#1	4096261	Base, Holding Tanks	#30	4096051	Hose Barb, Brass, 1/4 hose x 1/8 p.t.
#2	4096131	Plate, Bottom Cover	#30A	4090661	Washer, Rubber, 60 D Buna N
#3	4090521	#6 X 1/2" Screw, Panhead, S/S	#31	4096221	Hose, 1/4 ID, Braided
#4	4091251	Latch	#32	4096061	Hose Clamp
#5	4090571	10-32 X 3/8" Screw, Panhead, S/S	#33	4091211	Vacuum, 2-Stage
#6	4096091	Exhaust Flange, Polypropylene	#34	4091431	Gasket, Vacuum
#7	9120671	10-32 X 5/8" Screw, Flathead	#35	4095221	Plate, Vacuum Mount
#8	9120660	10-32 Hex Nut, w/Ny-Lok	#36	4090591	10-32 X 4", Flathead, S/S
#9	4096141	Axle, 1/2" X 11-1/4"	#37	9120660	10-32 X 5/8" Screw, Flathead
#10	4096251	Wheel, 5", nonmarking	#38	4090580	10-32 Hex Nut, w/Ny-Lok
#11	4091021	Axle Cap	#39	4096081	Spacer, Nylon, 1"
#12	0291411	10-24 Acorn Nut, Nickel Plated	#40	4090711	10-32 Hex Nut
#13	9120671	10-32 X 5/8" Screw, Flathead	#41	9120660	10-32 Hex Nut, w/Ny-Lok
#14	4096231	Cap, Plastic	#42	4090581	10-32 X 5/8", Button Head
#15	4096201	Handle Bracket Set, Left Side	#43	4096161	Pump, 55 PSI
#15A	4096191	Handle Bracket Set, Right Side	#43A	4096171	Bracket, Pump
#16	4096201	Handle Bracket Set, Left Side	#44	4096281	Filter, 40 Mesh, 1/4 p.t., S/S
#16A	4096191	Handle Bracket Set, Right Side	#45	4095011	Bushing, Brass, 1/4 pt X 1/8 pt
#17	N/A	Pem Nut, (part of bracket)	#46	4091261	Latch Strike
#18	9120880	1/4 Split Lock Washer	#47	4090581	10/32 X 5/8 Screw, Socket Button Head
#19	4090641	1-1/4-20 X 3-1/2" Hex Shoulder Bolt	#48	9120660	10-32 Hex Nut, w/Ny-Lok
#20	4096071	Plug, 3/4" square, Heavy Duty	#49	4096271	Vacuum/Recovery Tank
#21	4090081	Handle, Black Powder Coated	#50	4096121	Lid, Access, Vacuum Tank
#22	4090041	Switch Plate (empty), CX3	#51	4090561	8-32 X 7/8 Screw, Flathead, S/S
#23	N/A	Nut, Brass, Part of Valve	#52	4080551	8-32 Hex Nut, w/Ny-Lok, S/S
#24	4091041	Switch, SPST, Covered w/Light	#53	4096121	Lid, Access
#25	4090501	#4 x 1/4 Screw, Panhead, S/S	#54	4096101	Gasket
#26	4096021	Cord Retainer, Water Tight	#55	4096031	Quick Disconnect, Male, 1/8 p.t.
#27	4090681	1/2" Hex Nut, Plastic, .75ID X 1" OD	#57	4096041	Nipple, Brass, 1/8 p.t.
#28	4096151	Valve, Three - Way	#58	4096011	Elbow, Brass, 1/4 p.t., 90 degree
#29	4091091	Elbow, Brass, 1/8 p.t., 90 degree	#59	4096111	Gasket
#29A	4096241	Elbow & Hose Barb, 1/8 pt - 1/4 hose			

# INFORMATION & OPERATING INSTRUCTIONS

**DO NOT OPERATE MACHINE UNTIL YOU HAVE READ THIS SECTION  
IMPROPER USE OF THE PREDATOR CX3 SPOTTER WILL VOID THE WARRANTY**

1. Keep all filters clean. Do not operate machine if filters are clogged.
2. All extension cords must be three wire, and no longer than 50 feet.
3. Do NOT let the pump run dry.
4. Always use defoamer in the recovery tank when foaming occurs to prevent damage to vacuum motor.
5. Always empty the recovery tank when refilling the water tank(s).
6. Keep the machine, tools, and hoses from extremes in temperature. Do not allow the machine, tools or hoses to freeze.

## **INSPECTION:**

Carefully unpack and inspect the PREDATOR CX3 SPOTTER for shipping damage. Each unit is tested and inspected before shipment. Any damage incurred during shipping is the responsibility of the carrier, who must be notified immediately.

## **CLEANING SOLUTIONS:**

We recommend the use of liquid cleaning detergents. Powdered chemicals may be used, but unless mixed very thoroughly, they could cause a build-up in the pump, the lines, quick couplers, etc. A pH of between 7 and 9 is recommended to avoid premature pump wear. Damage caused by powdered chemicals or by the use of harsh chemicals (very high or very low pH) would void the warranty.

## **MAINTENANCE:**

Prior to each job, inspect the filters in the water tanks. Clean as necessary. Pump damage may occur if filters become clogged or unable to filter debris. Lubricate wheels and latches, as needed. The pump and vacuum motors do not require any maintenance.

The body can be cleaned with a general purpose cleaner and protected with a silicone-based product like Armor All®.

## FEATURES:

### Solution Tanks:

The PREDATOR CX3 SPOTTER has the unique design feature of having two 1-gallon solution tanks. This allows you to have cleaning solution in one tank and clean water for rinsing in the other tank. Simply turn the valve on the machine to switch from one tank to the other. There is no need to empty your detergent tank, clean it, and refill it with water for the rinse cycle.

### Vacuum Tank:

The vacuum tank holds more liquid than the total of both the holding tanks, so you can easily clean an area and rinse it without the need to empty your recovery tank. When you refill your holding tanks, simply remove the vacuum hose from the recovery tank and dump the water out through the vacuum inlet spout.

**Caution:** To prevent damage to the vacuum motor, do not let the water level in the recovery tank exceed 3/4 full.

**Caution:** When moving the machine with water in any of the tanks, do not tip the machine past a 30 degree angle to avoid spilling water into the vacuum chamber and to avoid damaging the motor.

## SET-UP:

1. Open the latches and remove the recovery tank from the machine.
2. Fill the solution tanks -- one tank will hold your diluted cleaning chemical and the second tank will hold clean water.
3. Place the recovery tank back onto the base, and secure the latches. Make sure the screw-in access lid is in place and tight.
4. Attach the vacuum hose to the vacuum inlet on the recovery tank.
5. Connect the solution line to the quick coupling on the rear of the PREDATOR CX3 SPOTTER base.
6. Attach the cleaning tool to the 10' Vacuum Hose/Solution Hose assembly.
7. Turn the knob on the 3-way switch to the desired tank.
8. Turn the rocker switch on. This will start the pump and the vacuum.
9. Press the lever on the tool to begin spraying.

**NOTE:** It may take a few seconds for the solution to reach the spray tip. The tool will automatically suck up the sprayed solution as the tool passes over the wet area.

**NOTE:** When switching from one tank to the other tank, it may take a few seconds of spraying for the solution in the selected tank to reach the spray tip.

10. When finished with the job, disconnect the hoses from the Spotter, remove and empty the recovery tank, then dump the

