

**AQUATRON**  
MODEL A80-XL

# PARTS LIST



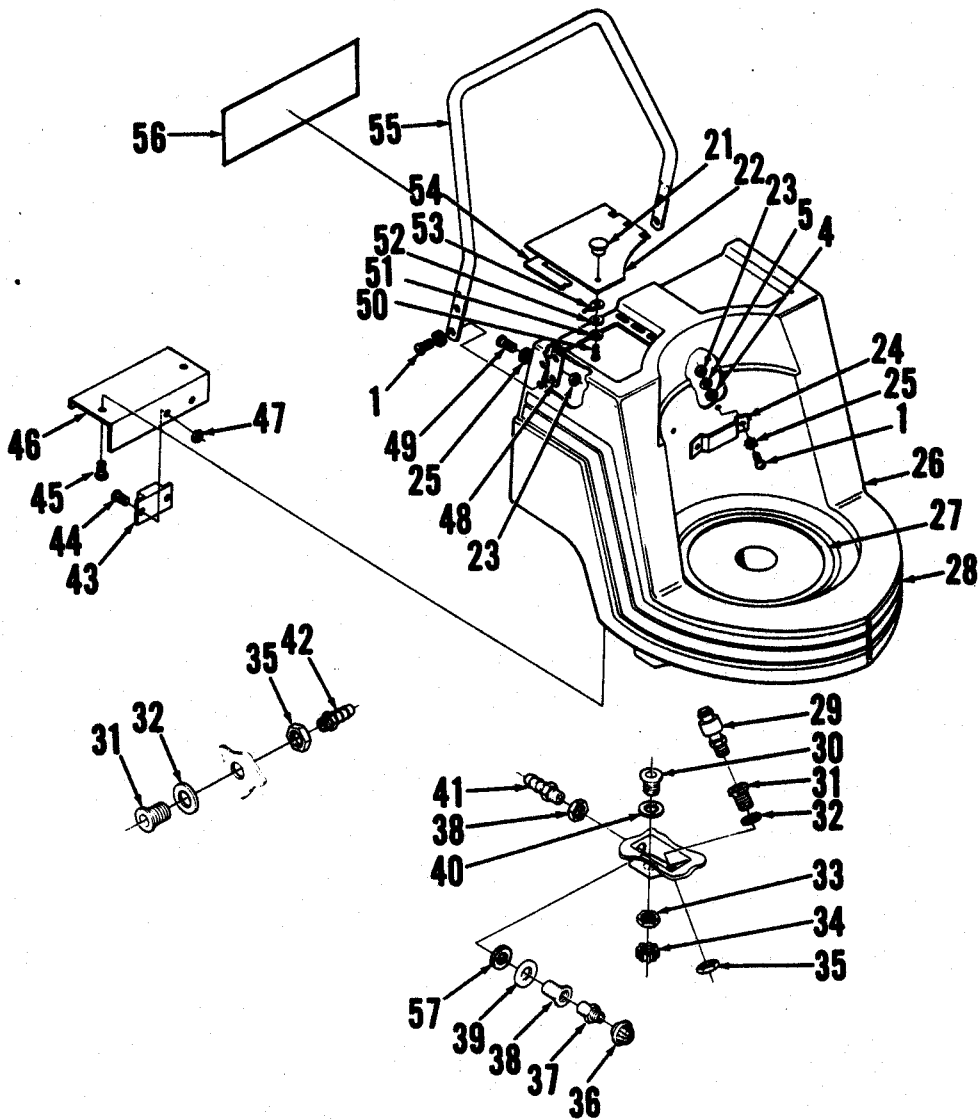
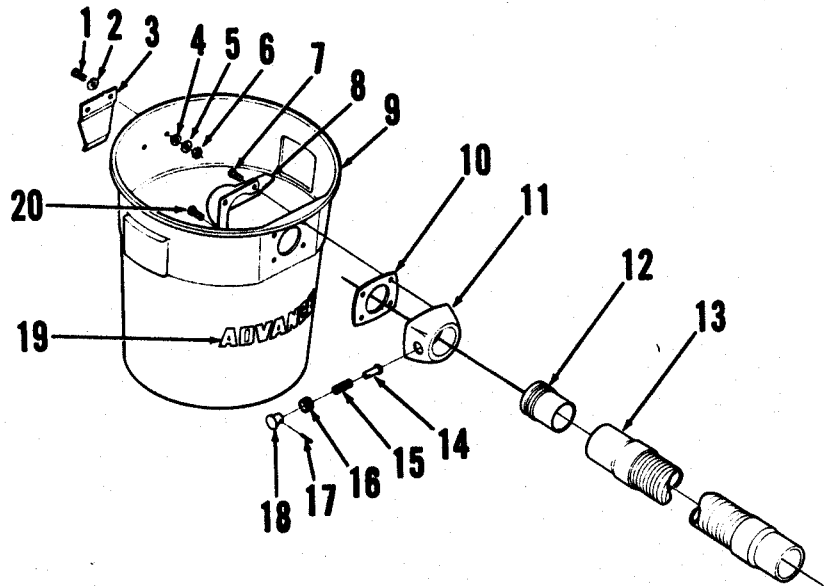
**ADVANCE**  
**MACHINE COMPANY**

INTERNATIONAL HEADQUARTERS, Plymouth, Minnesota 55441-3485  
EUROPE, Llantrisant, Pontyclun, Mid-Glamorgan CF7 6YZ, Wales, United Kingdom  
CANADA, 1295 Crestlawn Drive, Mississauga, Ontario L4W 1A9



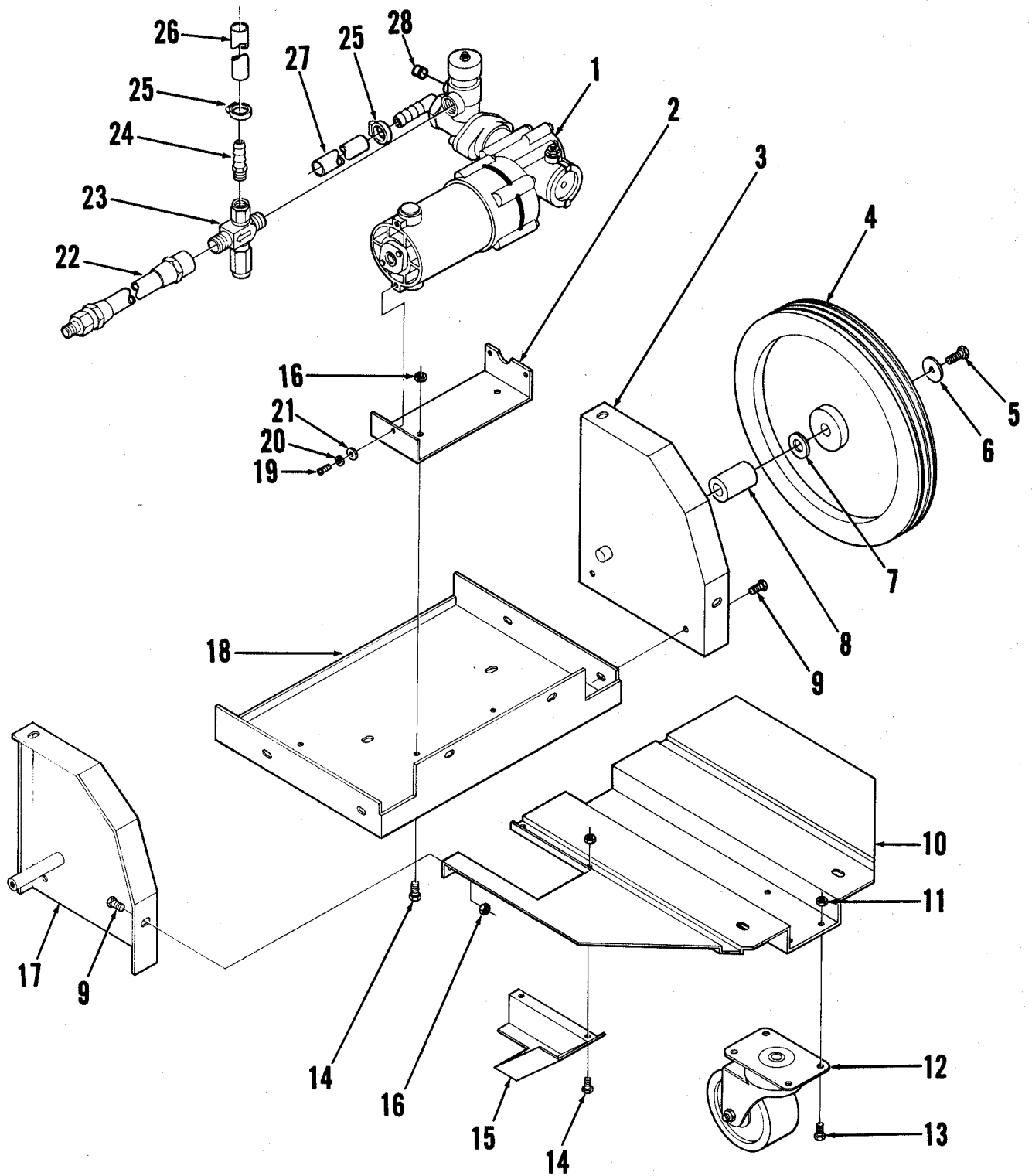
## INDEX FOR FORM NUMBER 042161

| <u>Description</u>      | <u>Location</u> | <u>Page</u> |
|-------------------------|-----------------|-------------|
| Control Panel           | C7              | 7           |
| Motor, Vacuum           | C9              | 9           |
| Tanks                   | C1              | 1           |
| Vacuum Head             | C5              | 5           |
| Wheels, Chassis, & Pump | C3              | 3           |
| Wiring Diagram          | C11             | 11          |



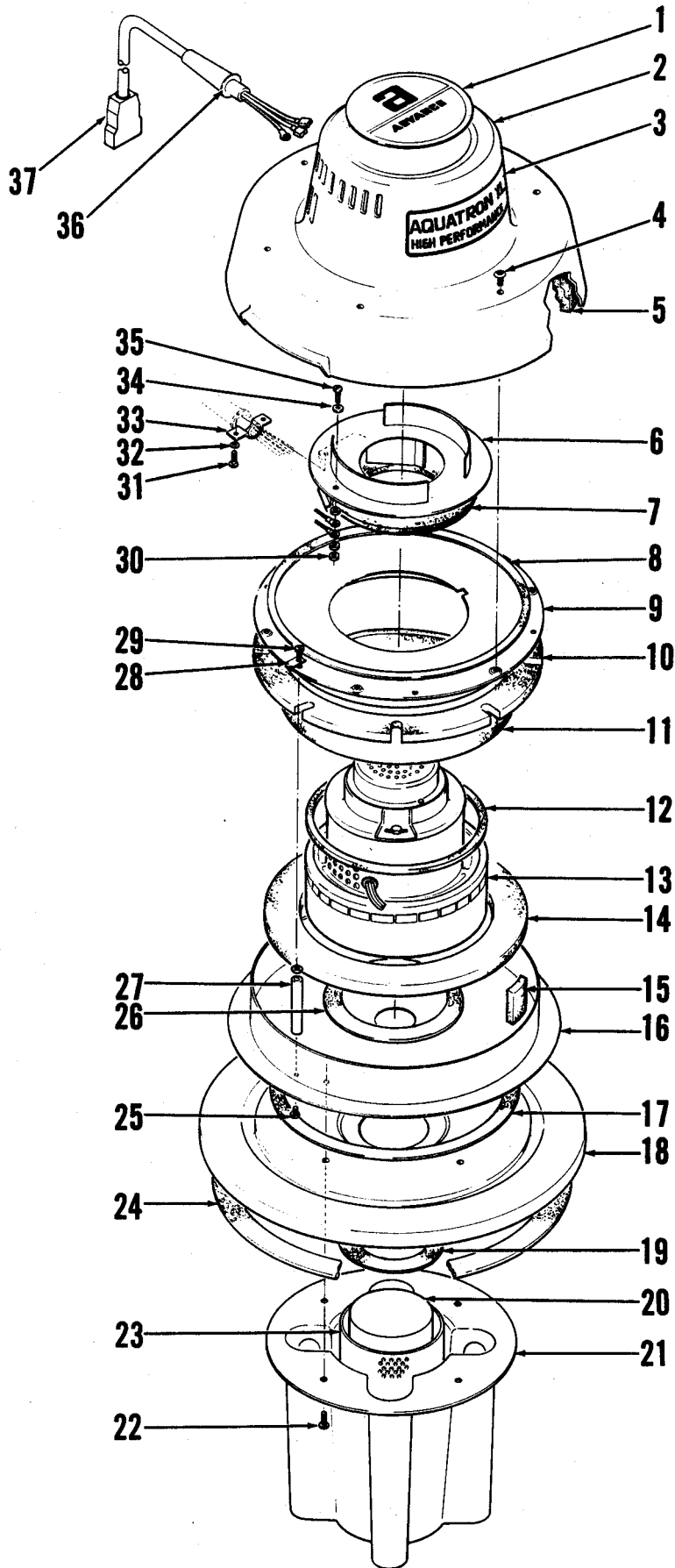
## TANK ASSEMBLIES

| #  | PART NO. | Q | DESCRIPTION         |
|----|----------|---|---------------------|
| 1  | 249 584  | 8 | SCREW               |
| 2  | 001 803  | 2 | WASHER              |
| 3  | 249 582  | 1 | BRACKET             |
| 4  | 204 218  | 2 | WASHER              |
| 5  | 249 581  | 2 | WASHER              |
| 6  | 002 378  | 2 | NUT                 |
| 7  | 209 521  | 3 | SCREW               |
| 8  | 201 394  | 1 | DEFLECTOR           |
| 9  | 249 507  | 1 | RECOVERY TANK       |
|    | 249 597  | 1 | RECOVERY TANK ASSY. |
| 10 | 201 390  | 1 | GASKET              |
| 11 | 201 337  | 1 | CONNECTOR           |
|    | 201 386  | 1 | CONNECTOR ASSY.     |
| 12 | 201 820  | 1 | ADAPTER             |
| 13 | 249 508  | 1 | HOSE                |
| 14 | 201 391  | 1 | PIN                 |
| 15 | 201 448  | 1 | SPRING              |
| 16 | 201 383  | 1 | SOCKET              |
| 17 | 201 472  | 1 | PIN                 |
| 18 | 201 405  | 1 | KNOB                |
| 19 | 016 519  | 1 | DECAL, ADVANCE      |
| 20 | 209 519  | 1 | SCREW               |
| 21 | 151 017  | 1 | KNOB                |
| 22 | 249 652  | 1 | COVER               |
|    | 249 589  | 1 | COVER ASSY.         |
| 23 | 002 378  | 4 | NUT                 |
| 24 | 249 564  | 1 | BRACKET             |
| 25 | 001 803  | 8 | WASHER              |
| 26 | 249 565  | 1 | SOLUTION TANK       |
|    | 249 598  | 1 | SOLUTION TANK ASSY. |
| 27 | 200 915  | 1 | GASKET              |
| 28 | 017 804  | 2 | DECAL, STRIPE       |
| 29 | 249 511  | 1 | FLOAT SWITCH        |
|    | 249 591  | 1 | TUBE (not shown)    |
| 30 | 249 973  | 1 | CONNECTOR           |
| 31 | 249 335  | 2 | ANCHOR CONNECTION   |
| 32 | 368 776  | 2 | RUBBER WASHER       |
| 33 | 249 971  | 2 | NUT                 |
| 34 | 255 076  | 1 | CAP                 |
|    | 740 154  | 1 | RUBBER WASHER       |
| 35 | 159 247  | 2 | NUT                 |
| 36 | 750 857  | 1 | STRAINER            |
| 37 | 249 570  | 1 | NIPPLE              |
| 38 | 745 543  | 1 | BULKHEAD ADAPTER    |
| 39 | 249 625  | 1 | RESTRAINER          |
| 40 | 249 977  | 1 | GASKET              |
| 41 | 104 299  | 1 | BARB                |
| 42 | 443 999  | 1 | BARB                |
| 43 | 260 066  | 1 | RELAY               |
| 44 | 002 143  | 2 | SCREW               |
| 45 | 002 523  | 2 | SCREW               |
| 46 | 249 516  | 1 | PANEL               |
| 47 | 002 563  | 2 | NUT                 |
| 48 | 249 566  | 2 | NUT PLATE           |
| 49 | 576 518  | 2 | SCREW               |
| 50 | 002 043  | 1 | SCREW               |
| 51 | 002 011  | 1 | SHPRF WASHER        |
| 52 | 001 954  | 1 | FLAT WASHER         |
| 53 | 325 240  | 1 | WIRE ROPE ASSY.     |
| 54 | 200 754  | 1 | GASKET              |
| 55 | 249 562  | 1 | HANDLE              |
| 56 | 017 807  | 1 | DECAL, INSTRUCTIONS |
| 57 | 249 975  | 1 | GASKET              |



# FRAME & PUMP ASSEMBLY

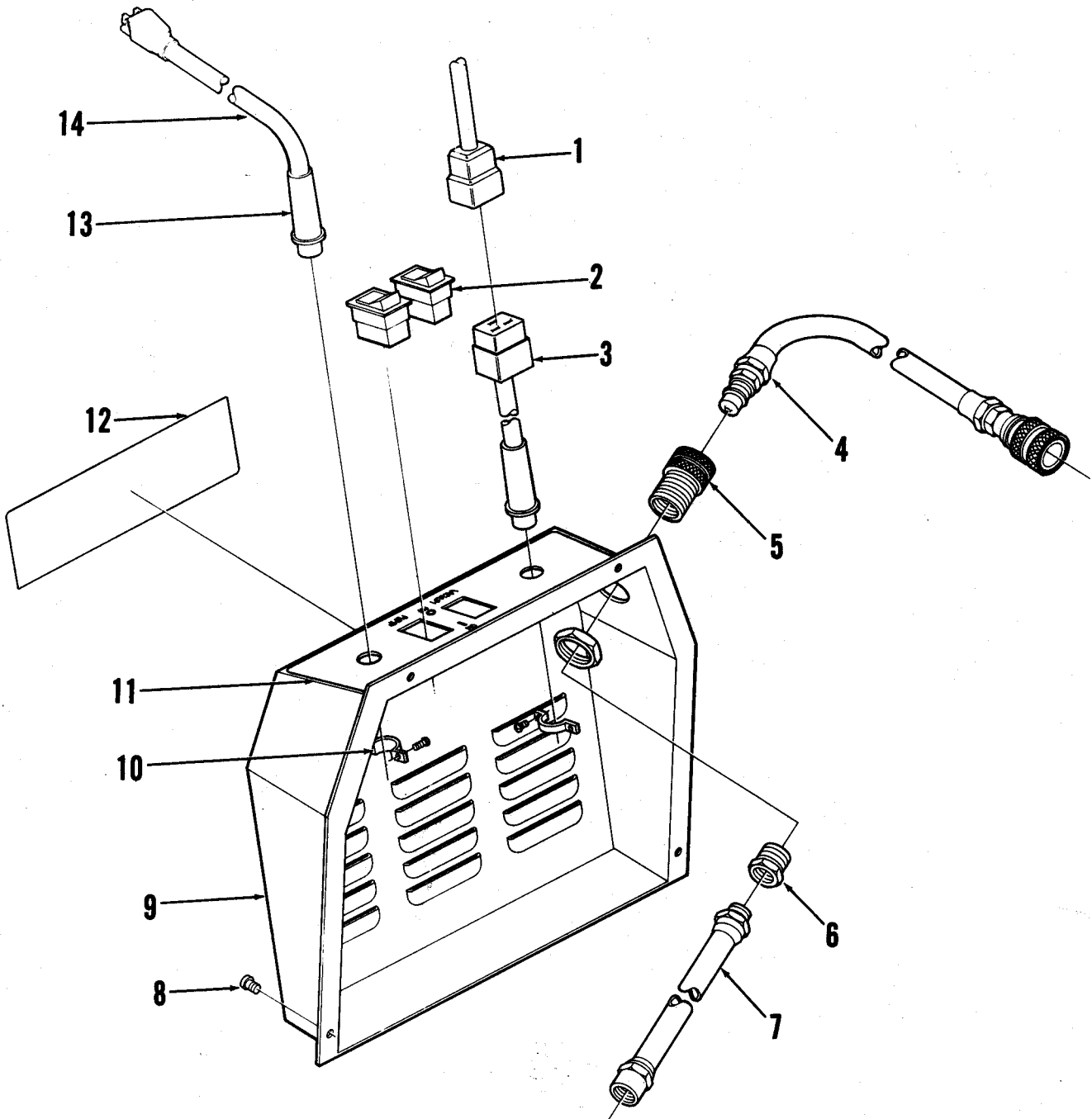
| #  | PART NO. | Q | DESCRIPTION      |
|----|----------|---|------------------|
| 1  | 249 504  | 1 | PUMP             |
| 2  | 249 557  | 1 | MOUNT            |
| 3  | 249 524  | 1 | LEFT AXLE PLATE  |
| 4  | 249 505  | 2 | WHEEL            |
| 5  | 002 513  | 2 | SCREW            |
| 6  | 151 114  | 2 | WASHER           |
| 7  | 155 373  | 2 | SPRING WASHER    |
| 8  | 249 561  | 2 | SPACER           |
| 9  | 002 530  | 6 | SCREW            |
| 10 | 249 512  | 1 | TANK PLATE       |
| 11 | 001 827  | 4 | NUT              |
| 12 | 260 122  | 1 | CASTER           |
| 13 | 001 854  | 4 | SCREW            |
| 14 |          | 4 | SCREW            |
| 15 | 249 576  | 1 | COVER            |
| 16 |          | 6 | NUT              |
| 17 | 249 528  | 1 | RIGHT AXLE PLATE |
| 18 | 249 514  | 1 | FRAME            |
| 19 |          | 3 | SCREW            |
| 20 |          | 3 | LOCKWASHER       |
| 21 |          | 3 | WASHER           |
| 22 | 755 014  | 1 | PULSE HOSE       |
| 23 | 249 569  | 1 | UNLOADER VALVE   |
| 24 | 155 640  | 1 | BARB             |
| 25 | 219 932  | 4 | HOSE CLAMP       |
| 26 | 249 634  | 1 | HOSE             |
| 27 | 249 624  | 1 | HOSE             |



# VACUUM HEAD ASSEMBLY

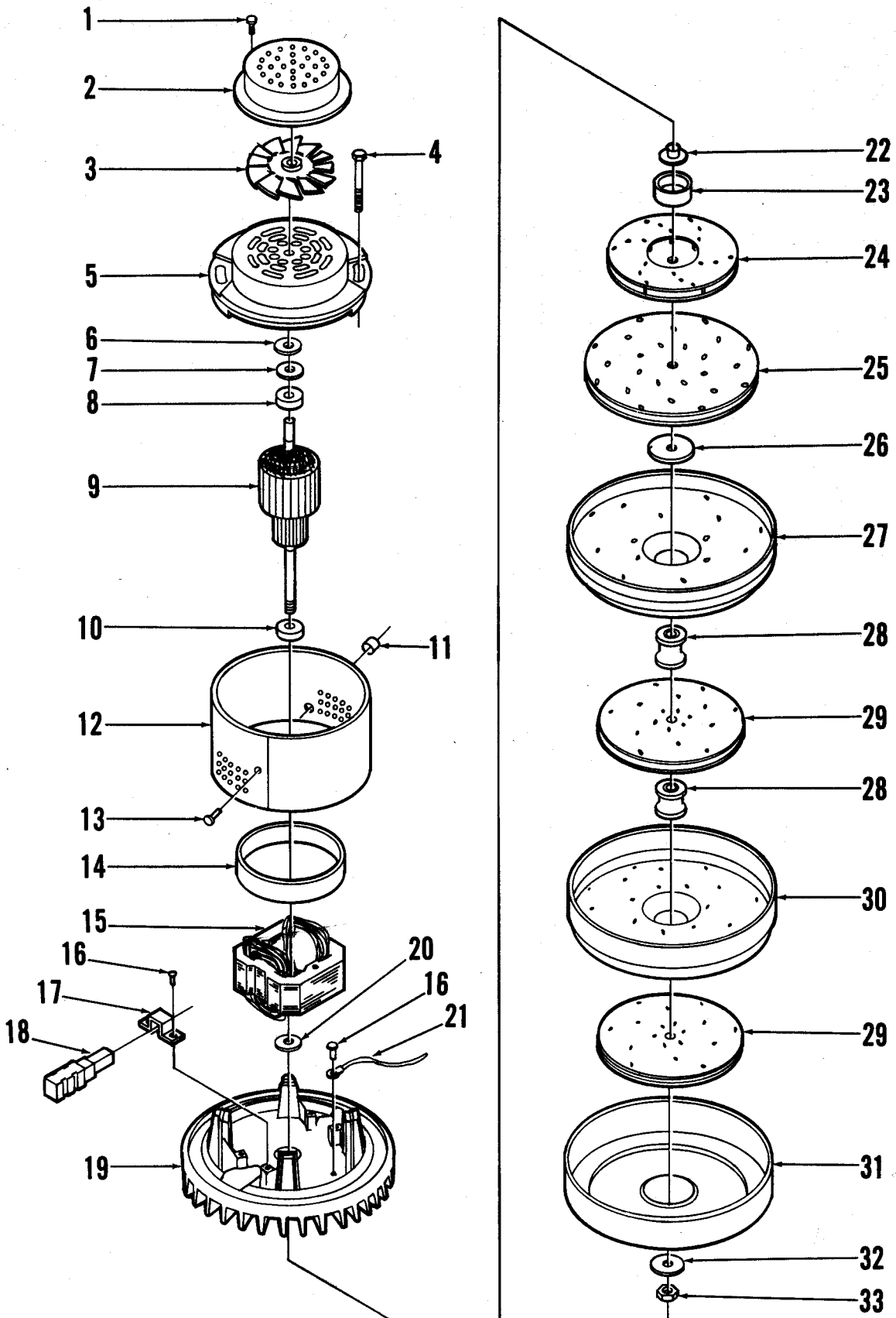
| #  | PART NO. | Q  | DESCRIPTION       |
|----|----------|----|-------------------|
| 1  | 017 076  | 1  | DECAL, ADVANCE    |
| 2  | 249 573  | 1  | SHROUD            |
|    | 249 645  | 1  | VACUUM HEAD ASSY. |
| 3  | 017 803  | 1  | DECAL, AQUATRON   |
| 4  | 570 220  | 6  | SCREW             |
| 5  | 249 537  | 2  | FOAM              |
| 6  | 249 612  | 1  | RING              |
| 7  | 249 533  | 1  | FOAM              |
| 8  | 249 648  | 1  | GASKET            |
| 9  | 249 622  | 1  | MOUNTING RING     |
| 10 | 205 653  | 1  | FOAM              |
| 11 | 249 535  | 1  | FOAM              |
| 12 | 249 656  | 1  | GASKET            |
| 13 | 249 502  | 1  | MOTOR             |
| 14 | 249 531  | 1  | FOAM              |
| 15 | 205 652  | 6  | FOAM              |
| 16 | 249 577  | 1  | BAFFLE RING       |
| 17 | 249 644  | 1  | GASKET            |
| 18 | 249 515  | 1  | BASE COVER        |
| 19 | 249 646  | 1  | GASKET            |
| 20 | 209 571  | 1  | FLOAT             |
| 21 | 249 604  | 1  | FLOAT HOUSING     |
| 22 | 209 485  | 4  | SCREW             |
| 23 | 209 566  | 1  | SHIELD            |
| 24 | 249 640  | 1  | GASKET            |
| 25 | 209 488  | 12 | SCREW             |
| 26 | 249 642  | 1  | GASKET            |
| 27 | 249 588  | 6  | SPACER            |
| 28 | 249 559  | 2  | TAB               |
| 29 | 002 519  | 2  | SCREW             |
| 30 | 002 565  | 5  | NUT               |
| 31 | 002 003  | 2  | SCREW             |
| 32 | 001 940  | 2  | WASHER            |
| 33 | 300 542  | 1  | CORD CLAMP        |
| 34 | 002 011  | 14 | WASHER            |
| 35 | 002 124  | 2  | SCREW             |
| 36 | 301 396  | 1  | STRAIN RELIEF     |
| 37 | 249 599  | 1  | PLUG ASSY.        |





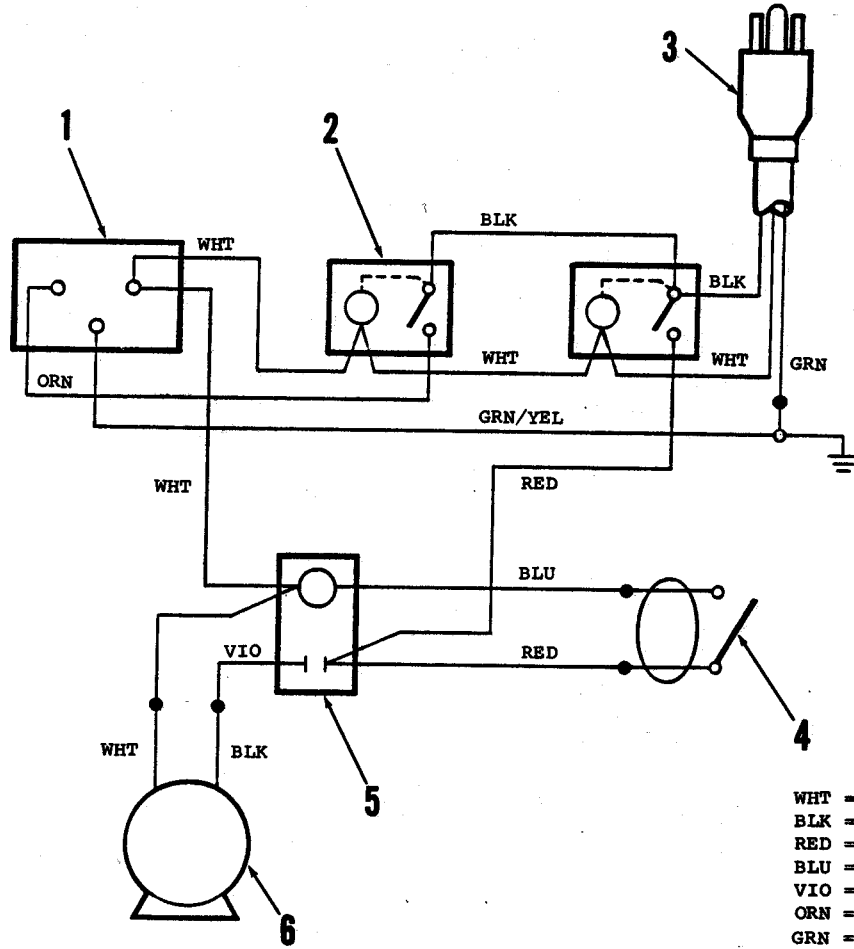
**CONTROL PANEL ASSEMBLY**

| #  | PART NO. | Q | DESCRIPTION              |
|----|----------|---|--------------------------|
| 1  | 249 599  | 1 | PLUG ASSY.               |
| 2  | 260 064  | 2 | ROCKER SWITCH            |
| 3  | 249 649  | 1 | PLUG ASSY.               |
| 4  | 249 583  | 1 | HOSE ASSY.               |
| 5  | 260 126  | 1 | COUPLER                  |
| 6  | 759 072  | 1 | ADAPTER                  |
| 7  | 755 014  | 1 | PULSE HOSE               |
| 8  | 002 508  | 4 | SCREW                    |
| 9  | 249 551  | 1 | ELECTRICAL PANEL         |
| 10 | 300 542  | 2 | CLAMP                    |
| 11 | 017 811  | 1 | DECAL, PANEL             |
| 12 | 017 809  | 1 | DECAL, CAUTION           |
| 13 | 301 396  | 2 | STRAIN RELIEF            |
| 14 | 249 563  | 1 | CORD SET                 |
| 15 | 249 574  | 1 | WIRE HARNESS (not shown) |



# VACUUM MOTOR ASSEMBLY

| #  | PART NO. | Q | DESCRIPTION     |
|----|----------|---|-----------------|
| 1  | 249 725  | 2 | SCREW           |
| 2  | 249 727  | 1 | COVER           |
| 3  | 249 729  | 1 | VENTILATING FAN |
| 4  | 260 156  | 2 | SCREW           |
| 5  | 202 584  | 1 | BRACKET         |
| 6  | 249 651  | 1 | LOAD SPRING     |
| 7  | 203 238  | 1 | DISC            |
| 8  | 249 737  | 1 | BALL BEARING    |
| 9  | 260 157  | 1 | ARMATURE        |
| 10 | 228 051  | 1 | BALL BEARING    |
| 11 | 202 762  | 1 | BUSHING         |
| 12 | 249 745  | 1 | BAND            |
| 13 | 249 653  | 1 | SCREW           |
| 14 | 249 739  | 1 | AIR VENT RING   |
| 15 | 260 158  | 1 | FIELD           |
| 16 | 202 772  | 5 | SCREW           |
| 17 | 203 254  | 2 | CLAMP           |
| 18 | 260 159  | 2 | BRUSH MECHANISM |
| 19 | 249 658  | 1 | END BRACKET     |
| 20 | 202 330  | 1 | NEOPRENE WASHER |
| 21 | 260 160  | 1 | GROUND LEAD     |
| 22 | 260 162  | 1 | SPACER          |
| 23 | 249 751  | 1 | SLINGER         |
| 24 | 249 753  | 1 | ROTATING FAN    |
| 25 | 202 592  | 1 | ROTATING FAN    |
| 26 | 249 661  | 1 | WASHER          |
| 27 | 249 755  | 1 | STATIONARY FAN  |
| 28 | 203 516  | 2 | SPACER          |
| 29 | 372 588  | 2 | ROTATING FAN    |
| 30 | 260 163  | 1 | STATIONARY FAN  |
| 31 | 249 757  | 1 | SHELL           |
| 32 | 202 711  | 1 | WASHER          |
| 33 | 203 440  | 1 | NUT             |



WHT = WHITE  
 BLK = BLACK  
 RED = RED  
 BLU = BLUE  
 VIO = VIOLET  
 ORN = ORANGE  
 GRN = GREEN  
 GRN/YEL = GREEN/YELLOW

**WIRING DIAGRAM**

| # | PART NO. | Q | DESCRIPTION   |
|---|----------|---|---------------|
| 1 | 250 228  | 1 | RECEPTACLE    |
| 2 | 260 064  | 2 | ROCKER SWITCH |
| 3 | 249 563  | 1 | CORD SET      |
| 4 | 249 511  | 1 | FLOAT SWITCH  |
| 5 | 260 066  | 1 | RELAY         |
| 6 | 249 504  | 1 | PUMP          |



Nilfisk-Advance, Inc.  
14600 21st Avenue North  
Plymouth, MN, 55447-3408  
[www.nilfisk-advance.com](http://www.nilfisk-advance.com)  
Phone: 800-989-2235  
Fax: 800-989-6566  
©2001 Nilfisk-Advance, Inc.,  
Plymouth, MN 55447-3408  
Printed in the U.S.A.