



# Typhoon<sup>TM</sup> 1610P/1612

Wet/Dry Vacuum

**Model No.:**  
608240 – 1610P  
608239 – 1612

**Operator and Parts Manual**



**NOBLES**  
12875 RANSOM STREET  
HOLLAND MI 49424 U.S.A.

**CUSTOMER SERVICE: 1-800-365-6625**  
**FAX: 1-800-678-4240**  
**OUTSIDE U.S. : 1-616-786-2330**

**608612**  
**Rev. 01 (01-00)**

# IMPORTANT SAFETY INSTRUCTIONS

When using an electrical appliance, basic precautions should always be followed, including the following:

### READ ALL INSTRUCTIONS BEFORE USING (THIS APPLIANCE)

**⚠ WARNING** -To reduce the risk of fire, electric shock, or injury:

1. Do not leave appliance when plugged in. Unplug from outlet when not in use and before servicing.
2. Use indoors only. Always install float before any wet pick-up operation.
3. Do not allow to be used as a toy. Close attention is necessary when used by or near children.
4. Use only as described in this manual. Use only manufacturer's recommended attachments.
5. Do not use with damaged cord or plug. If appliance is not working as it should, has been dropped, damaged, left outdoors, or dropped into water, return it to a service center.
6. Do not pull or carry by cord, use cord as a handle, close a door on cord, or pull cord around sharp edges or corners. Do not run appliance over cord. Keep cord away from heated surfaces.
7. Do not unplug by pulling on cord. To unplug, grasp the plug, not the cord.
8. Do not handle plug or appliance with wet hands.
9. Do not put any object into openings. Do not use with any opening blocked; keep free of dust, lint, hair, and anything that may reduce air flow.
10. Keep hair, loose clothing, fingers, and all parts of body away from openings and moving parts.
11. Turn off all controls before unplugging.
12. Use extra care when cleaning on stairs.
13. Do not use to pick up flammable or combustible liquids such as gasoline or use in areas where they may be present.
14. Do not pick up anything that is burning or smoking, such as cigarettes, matches or hot ashes.

## INSTRUCTIONS DE SÉCURITÉ

### LIRE TOUTES LES INSTRUCTIONS AVANT DE FAIRE FONCTIONNER (CET APPAREIL)

**⚠ ADVERTISSEMENT** - Pour réduire les risques d'incendie, de choc électrique ou de blessure:

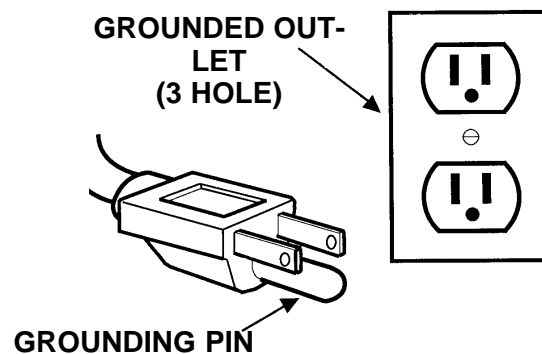
1. Ne pas laisser l'appareil sans surveillance lorsqu'il est branché. Débrancher lorsque l'appareil n'est pas utilisé et avant l'entretien.
2. Utiliser à l'intérieur seulement. Installer un flotteur avant d'aspirer des matières humides.
3. Ne pas permettre aux enfants de jouer avec l'appareil. Une attention particulière est nécessaire lorsque l'appareil est utilisé par des enfants ou à proximité de ces derniers.
4. Utiliser que conformément à cette notice avec les accessoires recommandés par le fabricant.
5. Ne pas utiliser si le cordon ou la fiche est endommagé. Retourner l'appareil à un atelier de réparation s'il ne fonctionne pas bien, s'il est tombé ou s'il a été endommagé, oublié à l'extérieur ou immergé.
6. Ne pas tirer, soulever ou traîner l'appareil par le cordon. Ne pas utiliser le cordon comme une poignée, le coincer dans l'embrasure d'une porte ou l'appuyer contre des arêtes vives ou des coins. Ne pas faire rouler l'appareil sur le cordon. Garder le cordon à l'écart des surfaces chaudes.
7. Ne pas débrancher en tirant sur le cordon. Tirer plutôt la fiche.
8. Ne pas toucher la fiche ou l'appareil lorsque vos mains sont humides.
9. N'insérer aucun objet dans les ouvertures. Ne pas utiliser l'appareil lorsqu'une ouverture est bloquée. S'assurer que de la poussière, de la peluche, des cheveux ou d'autres matières ne réduisent pas le débit d'air.
10. Maintenir les cheveux, les vêtements amples, les doigts et toutes les parties du corps à l'écart des ouvertures et des pièces mobiles.
11. Mettre toutes les commandes à la position ARRÊT avant de débrancher l'appareil.
12. User de prudence lors du nettoyage des escaliers.
13. Ne pas aspirer des liquides inflammables ou combustibles, comme de l'essence, et ne pas faire fonctionner dans des endroits où peuvent se trouver de tels liquides.
14. Ne pas aspirer de matières en combustion ou qui dégagent de la fumée, comme des cigarettes, des allumettes ou des cendres chaudes.

### GROUNDING INSTRUCTIONS

This appliance must be grounded. If it should malfunction or breakdown, grounding provides a path of least resistance for electric current to reduce the risk of electric shock. This appliance is equipped with a cord having an equipment–grounding conductor and grounding plug. The plug must be plugged into an appropriate outlet that is properly installed and grounded in accordance with all local codes and ordinances.

**⚠ WARNING – Improper connection of the equipment–grounding conductor can result in a risk of electric shock. Check with a qualified electrician or service person if you are in doubt as to whether the outlet is properly grounded. Do not modify the plug provided with the appliance – if it will not fit the outlet, have a proper outlet installed by a qualified electrician.**

This appliance is for use on a nominal 120–volt circuit and has a grounding attachment plug that looks like the plug illustrated in sketch. Make sure that the appliance is connected to an outlet having the same configuration as the plug. No adaptor should be used with this appliance.



### INSTRUCTIONS VISANT LA MISE 'A LA TERRE

Cet appareil doit être mis à la terre. En cas de défaillance ou de panne éventuelles, la mise à la terre fournit au courant un chemin de moindre résistance qui réduit le risque de choc électrique. Cet appareil est pourvu d'un cordon muni d'un conducteur de terre et d'une fiche avec broche de terre. La fiche doit être branchée dans une prise appropriée correctement installée et mise à la terre conformément aux règlements et ordonnances municipaux.

**AVERTISSEMENT. Un conducteur de terre mal raccordé peut entraîner un risque de choc électrique. Consulter un électricien ou un technicien d'entretien qualifié si vous n'êtes pas certain que la prise est correctement mise à la terre. Ne pas modifier la fiche fournie avec l'appareil – si elle ne peut être insérée dans la prise, faire installer une prise adéquate par un électricien qualifié.**

Cet appareil est destiné à un circuit de 120 v et est muni d'une fiche de mise à la terre semblable à celle illustrée par le croquis. S'assurer que l'appareil est branché à une prise de courant ayant la même configuration que la fiche. Aucun adaptateur ne devrait être utilisé avec cet appareil.

This manual is furnished with each new model. It provides necessary operation, machine maintenance instructions and an illustrated parts list.

**Read this manual completely and understand the machine before operating or servicing.**

This machine will provide excellent service. However, the best results will be obtained at minimum costs if:

- The machine is operated with reasonable care.
- The machine is maintained regularly - per the machine care instructions provided.
- The machine is maintained with manufacturer supplied or equivalent parts.

## MACHINE DATA

Please fill out at time of installation for future reference.

Model No.- \_\_\_\_\_

Install. Date - \_\_\_\_\_

Serial No.- \_\_\_\_\_

© 1999 Tennant Company

Printed in U.S.A

Nobles is a registered United States trademark of Tennant Company.

Typhoon is a United States trademark of Tennant Company.

## TABLE OF CONTENTS

<b>SAFETY PRECAUTIONS</b> .....	<b>6</b>	<b>STORING MACHINE</b> .....	<b>11</b>
<b>MACHINE INSTALLATION</b> .....	<b>7</b>	<b>TROUBLE SHOOTING</b> .....	<b>12</b>
<b>MACHINE SETUP</b> .....	<b>8</b>	<b>WIRING DIAGRAM</b> .....	<b>13</b>
<b>MACHINE OPERATION</b> .....	<b>9</b>	<b>PARTS LIST</b> .....	<b>14</b>
<b>DRAINING RECOVERY TANK</b> .....	<b>10</b>	<b>OPTIONAL ACCESSORIES</b> .....	<b>20</b>
<b>MAINTENANCE</b> .....	<b>11</b>		

# OPERATION

---

## SAFETY PRECAUTIONS

---

This machine is intended for commercial use. It is suited for wet/dry vacuuming in an indoor environment and is not constructed for any other use. Use only recommended accessory tools.

The following safety alert symbols are used throughout this manual as indicated in their description.

**⚠ WARNING: To warn of hazards or unsafe practices which could result in severe personal injury or death.**

**FOR SAFETY: To identify actions which must be followed for safe operation of equipment.**

The following information signals potentially dangerous conditions to the operator or equipment:

**FOR SAFETY:**

1. **Do not operate machine:**
  - Unless trained and authorized.
  - Unless operator manual is read and understood.
  - In flammable or explosive areas unless designed for use in those areas.
  - With damaged cord or plug.
  - If not in proper operating condition.
  - In outdoor areas.
  - In standing water.
  - Without bag and/or filters in place.
  - With the use of additional extension cords. Only use manufacturer's extension cord equipped with machine which has proper capacity and is grounded.
2. **Before operating machine:**
  - Make sure all safety devices are in place and operate properly.
3. **When using machine:**
  - Do not run machine over cord.
  - Do not pull machine by plug or cord.
  - Do not pull cord around sharp edges or corners.
  - Do not unplug by pulling on cord.
  - Do not stretch cord.
  - Do not handle plug with wet hands.
  - Keep cord away from heated surfaces.
  - Do not pick up burning or smoking debris, such as cigarettes, matches or hot ashes.
  - Report machine damage or faulty operation immediately.

4. **Before leaving or servicing machine:**
  - Turn off machine.
  - Unplug cord from wall outlet.
5. **When servicing machine:**
  - Unplug cord from wall outlet.
  - Use manufacturer supplied or approved replacement parts.

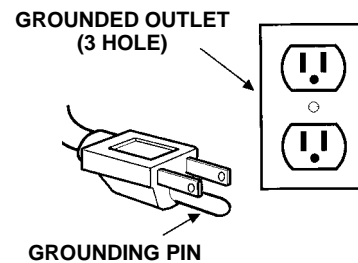
**⚠ WARNING: Hazardous Voltage. Shock or electrocution can result. Unplug machine before servicing.**

**⚠ WARNING: Flammable materials or reactive metals can cause an explosion or fire. Do not pick up.**

---

## GROUNDING INSTRUCTIONS

Machine must be grounded. If it should malfunction or breakdown, grounding provides a path of least resistance for electrical current to reduce the risk of electrical shock. This machine is equipped with a cord having an equipment-grounding conductor and grounding plug. The plug must be plugged into an appropriate outlet that is properly installed in accordance with all local codes and ordinances. Do not remove ground pin; if missing, replace plug before use.



## MACHINE INSTALLATION

Check carton for signs of damage. Report damages to carrier immediately.

Check machine contents list, contact distributor for missing items.

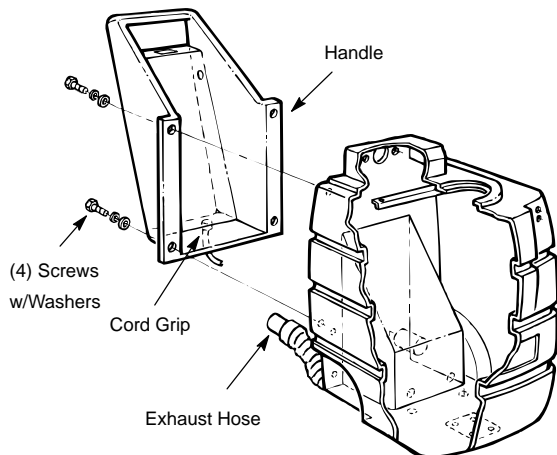
## MACHINE CONTENTS

- 1 – 3 m (10 ft) vacuum hose – For accessory tools
- 1 – Cloth bag
- 1 – Paper bag
- 1 – 15 m (50 ft) power cord

**NOTE:** Squeegee and Accessory Tool Kits are sold separately. See *Optional Accessories*.

## ATTACHING HANDLE

1. Remove handle from ship position. Also remove upper handle mounting screws and washers from machine (*Figure 1*).



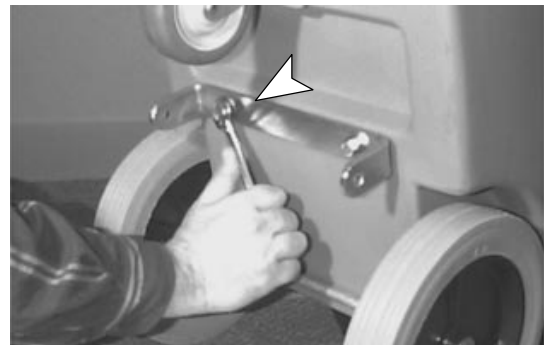
**FIG. 1**

2. Realign handle as shown and replace screws and washers.
3. Push excess cord slack up into cord grip. Tighten cord grip with 5/16 inch wrench until cord is secure. **DO NOT** overtighten.
4. Connect exhaust hose to bottom of handle housing.

## ATTACHING OPTIONAL SQUEEGEE KIT

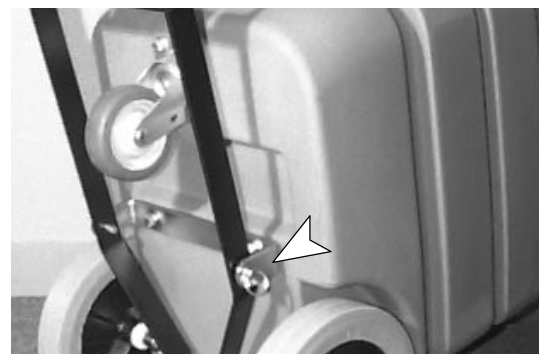
See *Optional Accessories*.

1. Empty recovery tank.
2. Remove vacuum bag.
3. Tip machine on back.
4. Remove (2) bolts and washers located at bottom of machine.
5. Install squeegee mounting bracket with bolts and washers (*Figure 2*).



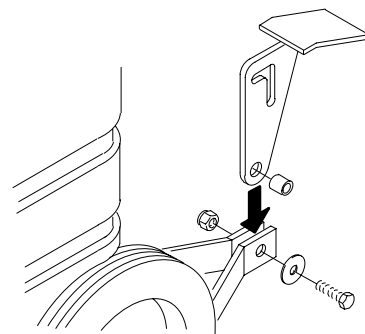
**FIG. 2**

6. Fasten squeegee to mounting bracket. Use (2) clevis and cotter pins provided (*Figure 3*).



**FIG. 3**

7. Stand vacuum upright.
8. Insert spacer through hole in pedal as shown. Position pedal between two holes in bracket and slide hex head screw through bracket and pedal. Secure with washer and nut (*Figure 4*).



**FIG. 4**

# OPERATION

- Slide pedal between two mounting arms on back of machine. Align and insert clevis pin through arms and slot in pedal, secure with cotter pin (Figure 5).



FIG. 5

- Attach squeegee assembly to bracket. Use (2) thumb screws to secure (Figure 6).

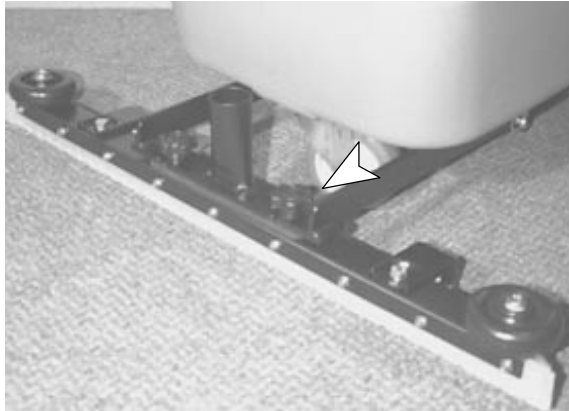


FIG. 6

- Connect 840mm (33 in) vacuum hose to squeegee assembly and to neck on machine lid (Figure 7).

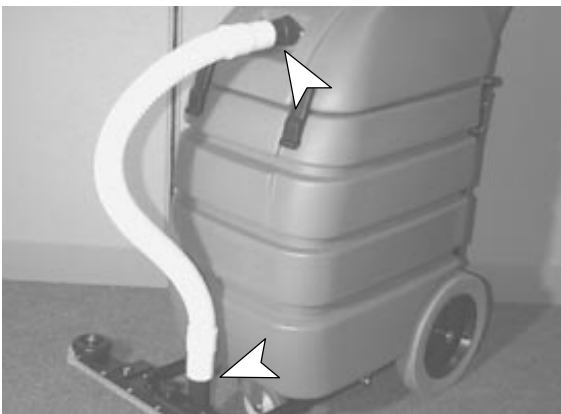


FIG. 7

## MACHINE SETUP

- Connect 15m (50 ft) power cord to machine pigtail cord.
- Plug power cord into a grounded outlet (Figure 8).

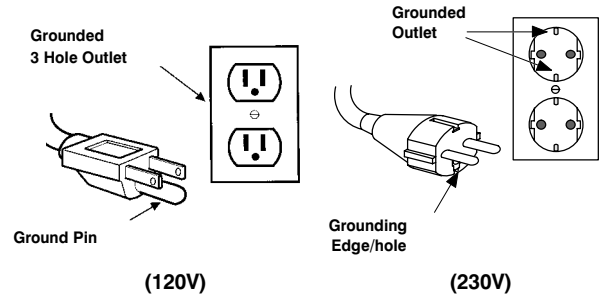


FIG. 8

**FOR SAFETY: Do not operate machine with the use of additional extension cords. Only use manufacturer's extension cord equipped with machine which has proper capacity and is grounded.**

## WET VACUUMING

- Open machine cover and remove vacuum bag from recovery tank (Figure 9).



FIG. 9

- Make sure automatic float shut-off screen is in place (Figure 10).



FIG. 10



**ATTENTION:** To prevent vacuum motor damage, automatic float shut-off screen must be in place.

## DRY VACUUMING

1. Open vacuum machine cover and install cloth filter bag, make sure that the bag edge is properly seated on compartment rim (Figure 11).

For easy debris disposal and to prolong cloth bag life, use a paper vacuum bag inside the cloth bag. Tuck the top of paper bag around outside rim of cloth bag. Never use paper bag without cloth filter bag in place. Do not reuse paper bags – always dispose (Figure 11).

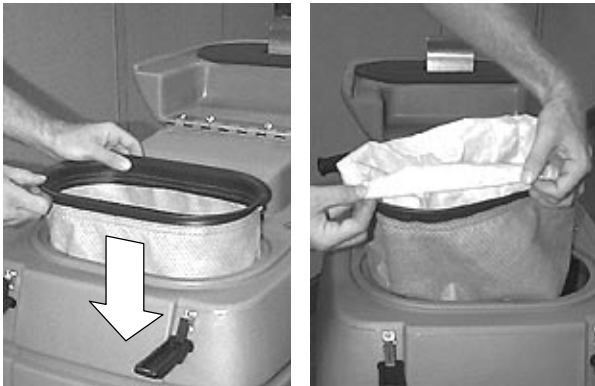


FIG. 11

**FOR SAFETY:** Do not operate machine without bag and/or filter in place.

2. Close cover and fasten latches.
3. Leave automatic float-off screen in place when dry vacuuming. It can provide limited vacuum motor protection for a faulty bag.

## MACHINE OPERATION

**FOR SAFETY:** Do not operate machine unless operator manual is read and understood.

Perform MACHINE SETUP instructions before operating machine.

**⚠ WARNING:** Flammable materials or reactive metals can cause an explosion or fire. Do not pick up.

## OPERATING ACCESSORY TOOLS

1. Connect 3 m (10 ft) vacuum hose to machine cover snout.
2. Select desired accessory tool and connect to vacuum hose (Figure 12).

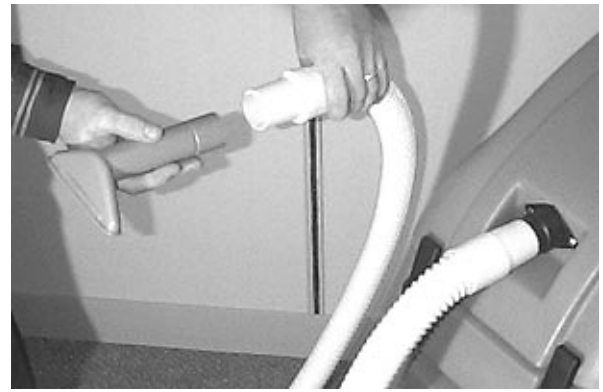


FIG. 12

3. Activate ON/OFF switch and operate accessory tool as normal.
4. During DRY vacuuming, check bag periodically for fullness. For best suction performance, empty bag at 3/4 full.

During WET vacuuming, the float shut-off screen will automatically stop water intake when recovery tank becomes full (See DRAINING RECOVERY TANK).

**ATTENTION:** If foam develops in recovery tank during wet vacuuming, use a quality defoamer chemical to eliminate the foam. Foam buildup will NOT activate float, and will cause damage to the vacuum motor. Damage due to foam is NOT covered by warranty.

## OPERATING SQUEEGEE KIT OPTION

1. Lower squeegee to floor, lightly kick the pedal forward to release from transport position (Figure 13).



FIG. 13

2. Activate the ON/OFF switch.
3. Begin operating by pushing and pulling machine in either direction.

## OPERATION

---

4. During operation, the float shut-off screen will automatically stop water intake when recovery tank becomes full (See DRAINING RECOVERY TANK).

**ATTENTION:** If foam develops in recovery tank during wet vacuuming, use a quality defoamer chemical to eliminate the foam. Foam buildup will NOT activate float, and will cause damage to the vacuum motor. Damage due to foam is NOT covered by warranty.

5. To raise squeegee, step downward on pedal until pedal engages in the transport position (Figure 14).



FIG. 14

**NOTE:** Squeegee Kit can be used to pick up fine particles (dust, sand, sawdust, etc.). Squeegee not recommended for ordinary dry pick up.

---

### VACUUM MOTOR THERMAL PROTECTOR

Vacuum motor is thermally protected by a temperature sensor device. It will trip if motor has an overload. If motor should quit, wait 20 minutes for motor to cool and remove obstruction before continuing.

---

### DRAINING RECOVERY TANK

---

---

#### FLOOR DRAINING

1. Push machine to nearest floor drain, if not available use a bucket to drain machine.
2. Remove drain hose from holder, twist off drain hose knob and drain. Raise hose to stop flow of water (Figure 15).



FIG. 15

3. After draining recovery tank, open cover and thoroughly rinse out tank with clean water.
4. Replace drain hose knob securely and return to holder.

**ATTENTION:** Be certain drain hose knob is secure to prevent suction loss.

---

#### ELEVATED DRAINING

**NOTE:** Machine must be equipped with pump-out feature.

1. Disconnect vacuum hose from attachment tool or from squeegee attachment.
2. Disconnect exhaust hose from rear of machine and connect it to vacuum hose (Figure 16).



FIG. 16

3. Hang drain hose elbow over edge of drain sink (Figure 17).



FIG. 17

4. Pull up on drain lever and turn on switch (Figure 18).



FIG. 18

5. Vacuum motor will pressurize tank and force water up into drain sink.

---

## MAINTENANCE

---

To keep machine in good working condition, simply follow machine's daily, weekly and monthly maintenance procedures.

**⚠ WARNING: Hazardous Voltage. Shock or electrocution can result. Unplug machine before servicing.**

1. Drain and rinse recovery tank after wet vacuuming.
2. Remove and clean float shut-off screen from recovery tank.
3. Clean squeegee blades with a cloth. Replace blades when they become worn.
4. Check bag for fullness, empty bag at 3/4 full.
5. Wipe machine housing with a nonabrasive, nonsolvent cleaner.
6. Check cords and cord grips for damage. If worn or damaged, replace immediately. Coil cord neatly.

**ATTENTION: Always have float shut-off screen in place before operating. During wet operation, the shut-off float protects the vacuum motor from water. During dry vacuuming, the float screen can provide limited protection for a faulty filter bag.**

7. Inspect vacuum hose regularly for holes, loose cuff or clogged debris.
8. To maintain maximum performance, wash cloth filter bag by hand with a mild detergent. Let bag dry thoroughly before replacing.
9. Lubricate axle grease fittings with a water resistant grease monthly.
10. Lubricate front swivel casters with a silicone spray monthly.
11. Check machine for loose nuts and bolts.
12. Every 250 hours of operation, check motor for carbon brush wear, replace brushes if worn to 10 mm (0.38 in) or less.

---

## STORING MACHINE

---

Before storing the machine perform the following instructions:

1. Empty and rinse recovery tank and accessory tools.
2. Empty or replace vacuum bag.
3. Raise or remove squeegee assembly.
4. Store machine in a dry area in the upright position.

**ATTENTION: Do not store outdoors and avoid getting wet. Do not allow machine to freeze.**

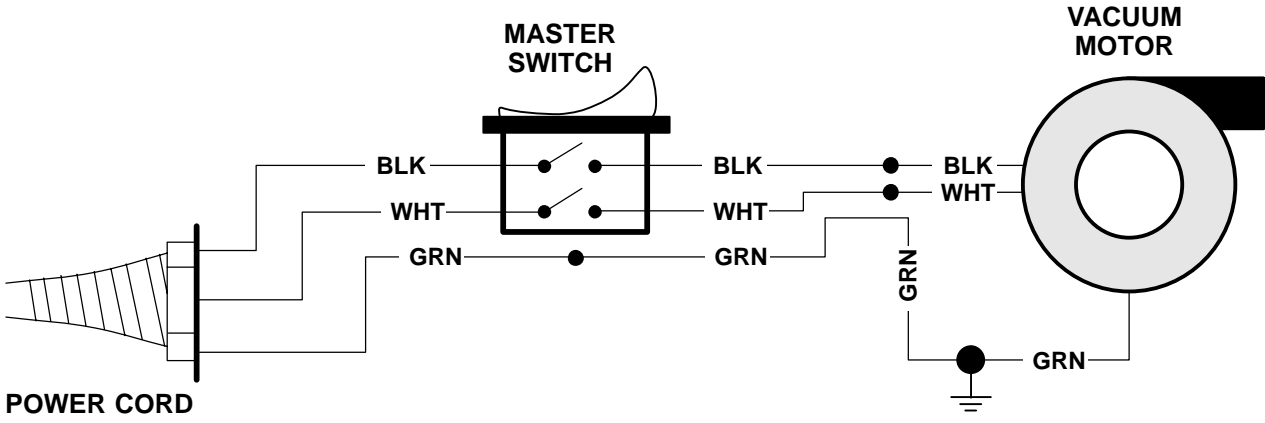
**ATTENTION: If storing machine in freezing temperatures, be certain to drain machine of all water. Damage due to freezing is not covered by warranty.**

# OPERATION

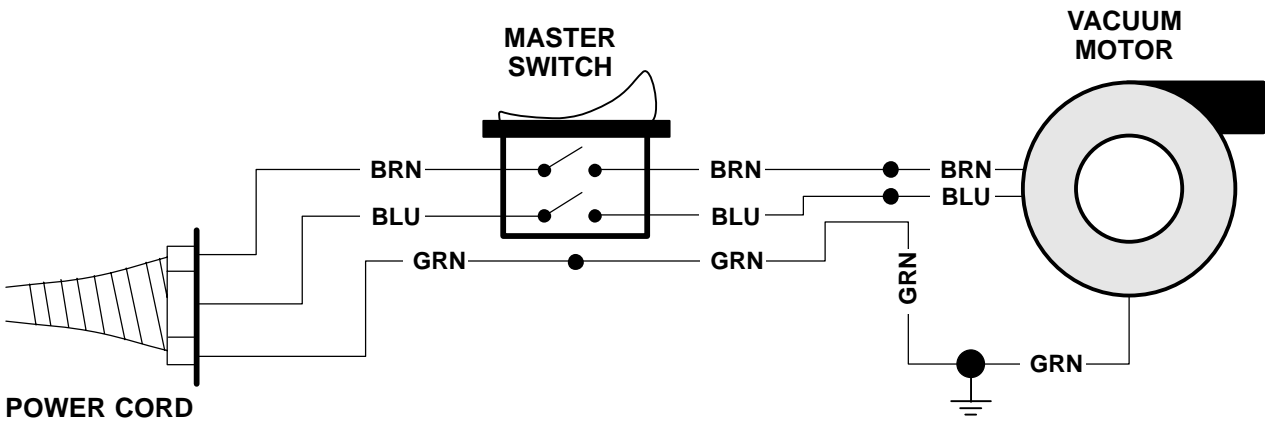
## TROUBLE SHOOTING

PROBLEM	CAUSE	SOLUTION
Machine does not run.	ON/OFF switch is OFF.	Turn switch to ON.
	Vacuum not plugged into wall outlet.	Plug power cord to wall outlet.
	Faulty ON/OFF switch.	Replace switch.
	Faulty wiring.	Contact Service Center.
	Faulty power cord.	Contact Service Center.
	Building circuit breaker tripped.	Reset circuit breaker and change to a different power circuit.
	Vacuum motor over heated.	Find air obstruction. Let motor cool for 20 minutes.
	Faulty vacuum motor.	Contact Service Center.
Machine has little or no suction.	Hose is clogged.	Clear hose.
	Holes in hose.	Replace hose.
	Intake elbow in lid is clogged.	Remove hose from elbow and remove clogged material.
	Drain hose knob is loose or open.	Tighten drain knob.
	Lid is not securely latched.	Latch both sides of lid securely.
	Worn gasket which is leaking air.	Inspect all gaskets, and replace if necessary.
	Recovery tank or bag is full.	Empty tank or bag.
Machine with Pump-Out feature:	Drain valve is open.	Close drain valve.
	Drain hose elbow is loose or off plug.	Connect elbow to plug securely.
Squeegee has poor pick up.	Debris is wedged under squeegee blade.	Wipe off squeegee blades.
	Squeegee blades are worn.	Replace squeegee blades.
	Squeegee blade is loose.	Tighten thumbscrews.
	Vacuum hose connection on squeegee mount is loose.	Push vacuum hose onto squeegee mount securely.

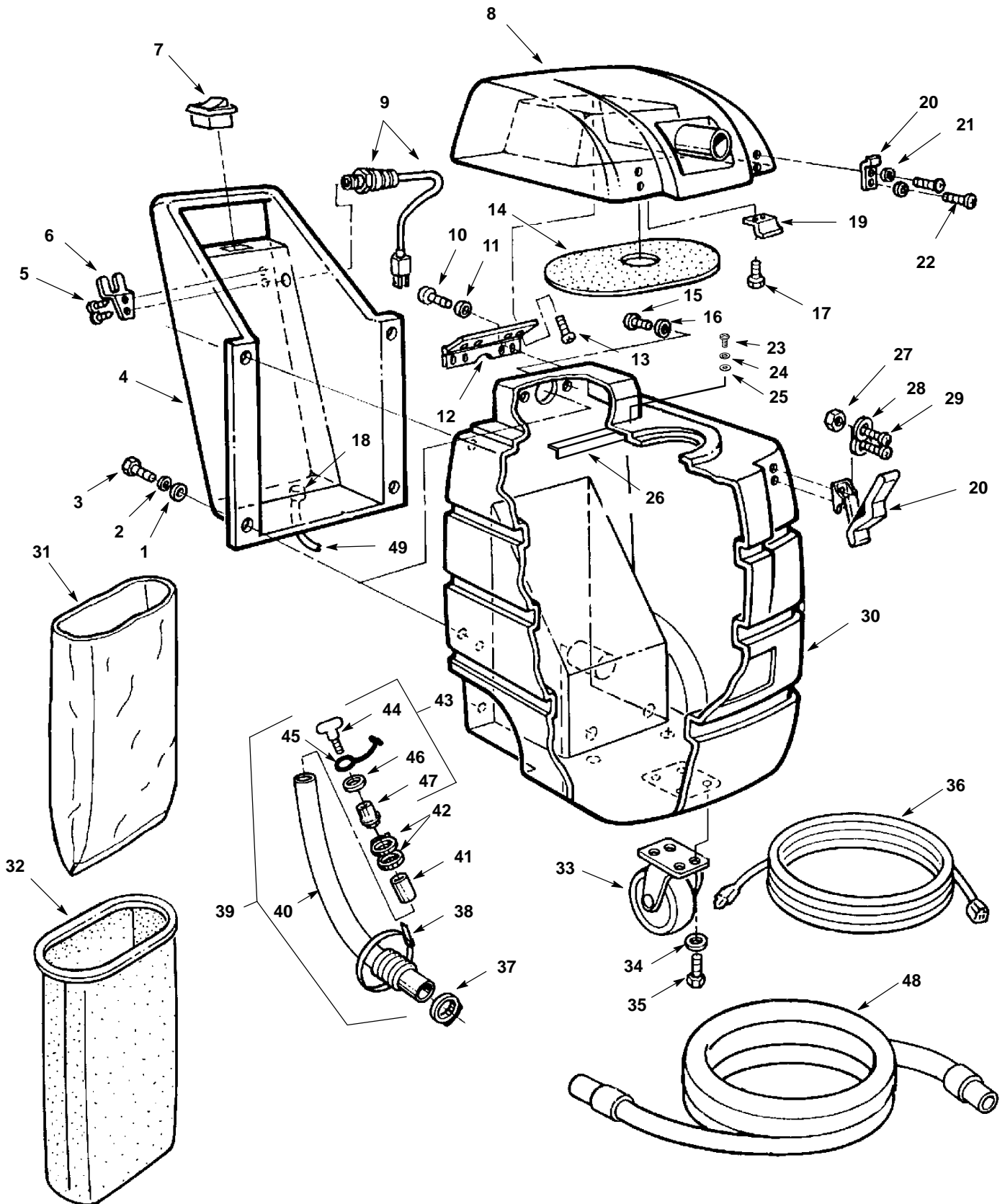
120V



220V



TANK GROUP



## TANK GROUP

REF	PART #	DESCRIPTION	QTY.
1	140028	WASHER, FLAT	4
2	140017	WASHER, LOCK	4
3	140231	SCREW, 3/8-16X1 1/2	4
4	608618	HANDLE, GREEN	1
5	140825	SCREW, #6X1/2	2
6	230696.BK	HANGER, DRAIN HOSE	1
7	19417	SWITCH	1
8	608613	COVER, GREEN	1
9	130201	ASM., CORD 16/3X28" (120V)	1
10	140195	SCREW, 1/4-20X1/2	4
11	140000	WASHER, FLAT	4
12	230318	HINGE, COVER (16 GAL. MODEL)	1
13	140195	SCREW, 1/4-20X1/2	4
14	100097	GASKET, COVER (16 GAL. MODEL)	1
15	140824	SCREW, 1/4-20X5/8	2
16	578244000	WASHER, LOCK	2
17	140197	SCREW, 10-24X3/8	2
18	130110	BUSHING, STRAIN RELIEF	1
19	230497	BRACKET, AIR DEFLECTOR	1
20	140932	LATCH, RUBBER & KEEPER	2
	140953	LATCH, CHROME (PUMP-OUT MODEL)	2
	230512	KEEPER (PUMP-OUT MODEL)	2
21	140023	WASHER, LOCK	4
22	140801	SCREW, 8-32X3/8	4
23	140824	SCREW, 1/4-20X5/8 (16 GAL. MODEL)	2
24	578244000	WASHER, LOCK (16 GAL. MODEL)	2
25	140003	WASHER, FENDER (16 GAL. MODEL)	2
26	230482.BK	BRACKET, SUPPORT (16 GAL. MODEL)	1
27	28990	NUT, LOCK	4

REF	PART #	DESCRIPTION	QTY.
28	140011	WASHER, FLAT	4
29	140802	SCREW, 8-32X5/8	4
30	608616	TANK, GREEN (16 GAL. MODEL)	1
	608615	TANK, GREEN (16 GAL. MODEL W/PUMP-OUT)	1
31	900102	BAG, PAPER	1
32	900105	BAG, CLOTH (16 GAL. MODEL)	1
33	103065	CASTER, SWIVEL	1
34	140015	WASHER, LOCK	4
35	140226	SCREW, 5/16-18X5/8	4
36	130250	CORD, 16/3X50'	1
37	140307	CLAMP	1
38	130041	WIRE TIE	1
▽39	701058	ASM., DRAIN HOSE	1
▲40	160457	HOSE, DRAIN	1
▲41	140921	SLEEVE	1
▲42	140072	CLAMP	2
▽▲43	701061	ASM., PLUG	1
▲44	230831	KNOB	1
▲45	230882	STRAP	1
▲46	140056	WASHER, FENDER	1
▲47	140955	PLUG	1
48	160481	HOSE, VACUUM	1
49	130267	CORD, HANDLE 16/3X30"	1

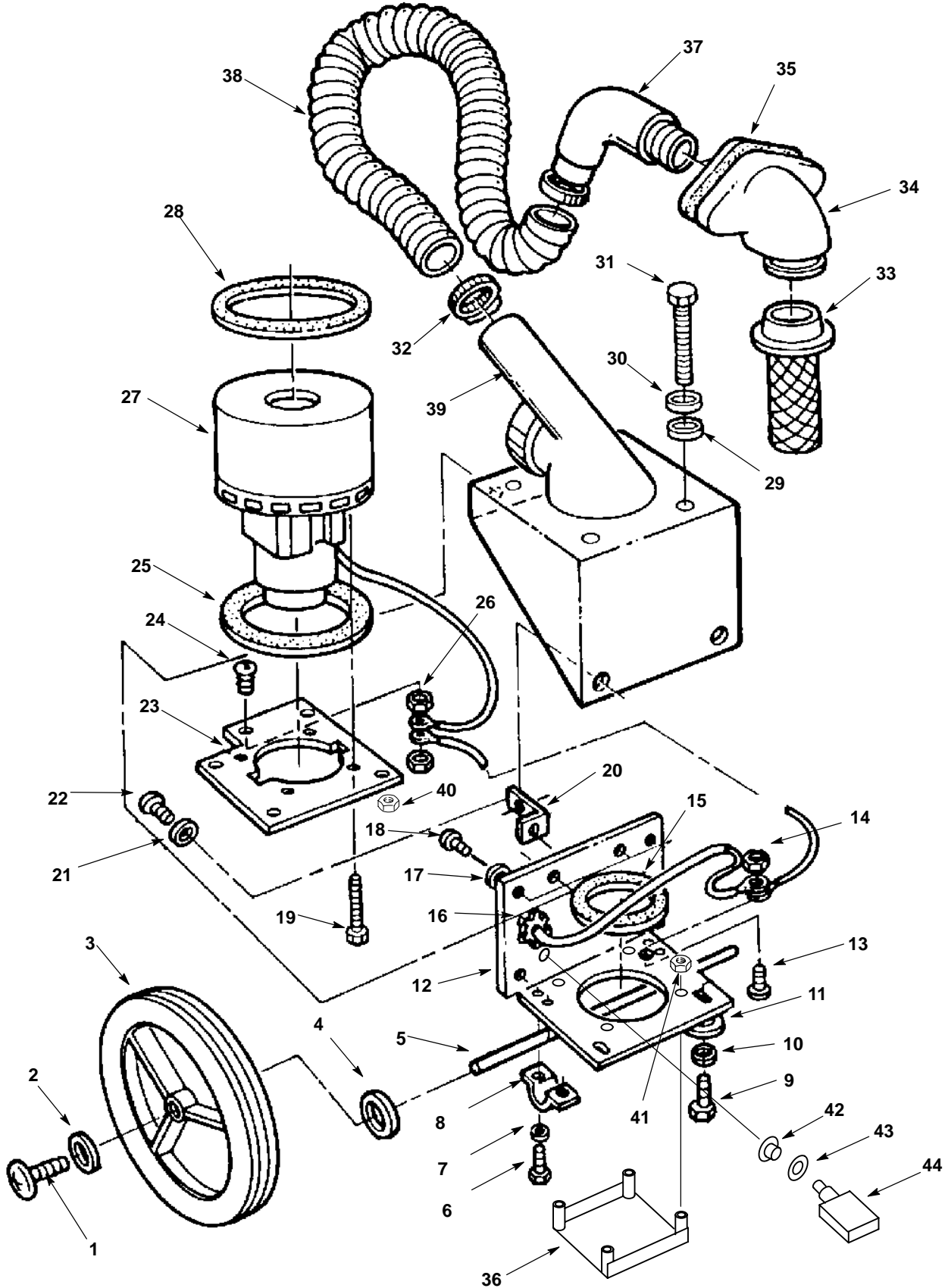
▽ ASSEMBLY

▲ INCLUDED IN ASSEMBLY

## DECAL LIST

REF	PART #	DESCRIPTION	QTY.
N/S	602596	DECAL, WARNING	1
N/S	120657	DECAL, PUMP-OUT INST.	1
N/S	608186	DECAL, "NOBLES"	1
N/S	608492	DECAL, "TYPHOON 1610P"	2
N/S	608493	DECAL, "TYPHOON 1612"	2

BASE GROUP



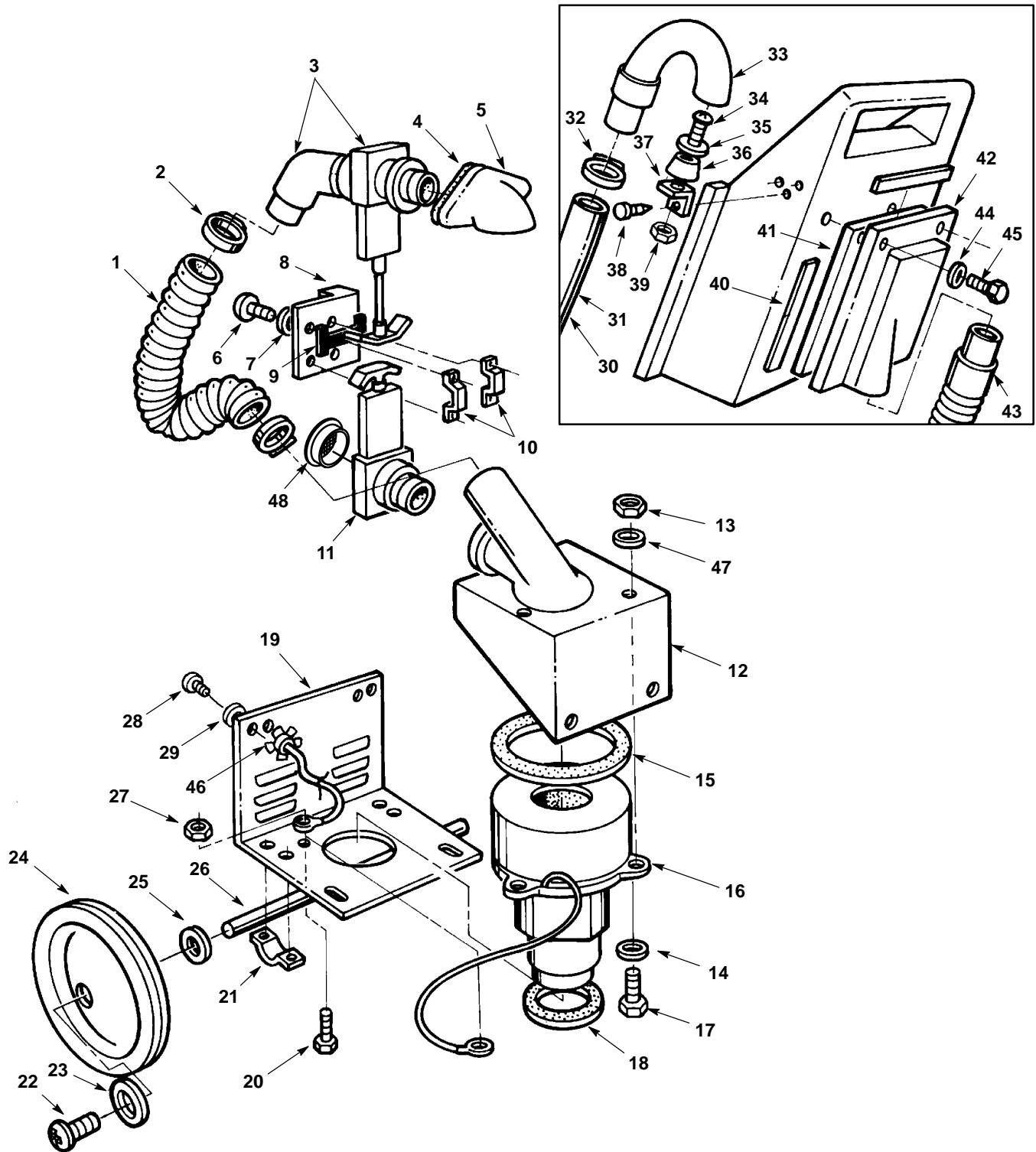


## BASE GROUP

REF	PART #	DESCRIPTION	QTY.
1	140195	SCREW, 1/4-20X1/2	2
2	140003	WASHER, FENDER	2
3	103060	WHEEL (16 GAL. MODEL)	2
4	140045	WASHER, FLAT	2
5	230317	AXLE (16 GAL. MODEL)	1
6	140553	SCREW, 1/4-20X1/2	4
7	140016	WASHER, LOCK	4
8	230746	BRACKET, AXLE	2
9	140201	SCREW, 3/8-16X3/4	2
10	140017	WASHER, LOCK	2
11	140028	WASHER, FLAT	2
12	230486.BK	PLATE, COVER (16 GAL. MODEL)	1
	230331.BK	PLATE, COVER (16 GAL. W/PUMPOUT)	1
13	140900	SCREW, 10-24X3/4	1
14	140519	NUT, KEP	3
15	100095	GASKET, VAC MOTOR	1
16	140504	NUT, CONDUIT	1
17	140000	WASHER, FLAT	5-6
18	140195	SCREW, 1/4-20X1/2	5-6
19	140340	SCREW, #10X5/8	4
20	230496.BK	SUPPORT, DRAIN HOSE	1
21	578244000	WASHER, LOCK	2
22	140824	SCREW, 1/4-20X5/8	2
23	230522	BRACKET, MOTOR MOUNT	1
24	140900	SCREW, 10-24X3/4	1
25	100143	GASKET, MOTOR	1
26	140519	NUT, KEP	3

REF	PART #	DESCRIPTION	QTY.
27	190155	-BRUSH, CARBON (2/PK)	2
	130417	MOTOR, VACUUM 120V (TYPHOON 1612)	1
	600272	-BRUSH, CARBON (2/PK)	2
	130415	MOTOR, VACUUM 120V (TYPHOON 1610P)	1
	190161	-BRUSH, CARBON (2/PK)	2
	130403	MOTOR, VACUUM 230V (TYPHOON 1610P)	1
	190158	-BRUSH, CARBON (2/PK)	2
28	100038	GASKET, MOTOR	1
29	140003	WASHER, FENDER	4
30	578244000	WASHER, LOCK	4
31	140199	SCREW, 1/4-20X4 1/2 (TYPHOON 1612)	4
32	140308	CLAMP	2
33	180613	FLOAT, SCREEN SHUT-OFF	1
34	100381	ELBOW, VACUUM TUBE	1
35	100096	GASKET, VACUUM TUBE	1
37	700435	ELBOW	1
38	160482	HOSE, VACUUM	1
39	100380	MOUNT, VACUUM MOTOR	1
	100302	MOUNT, VAC. MOTOR (PUMP-OUT MODEL)	1
40	140501	NUT, LOCK	4
41	12481	NUT	4
42	130164	PLUG, DOME (220V)	1
43	140022	WASHER, LOCK (120V)	1
44	611110000	BREAKER, CIRCUIT 10A	1
	130670	BREAKER, CIRCUIT 12A (PUMP-OUT MODEL)	1

PUMP-OUT GROUP



## PUMP-OUT GROUP

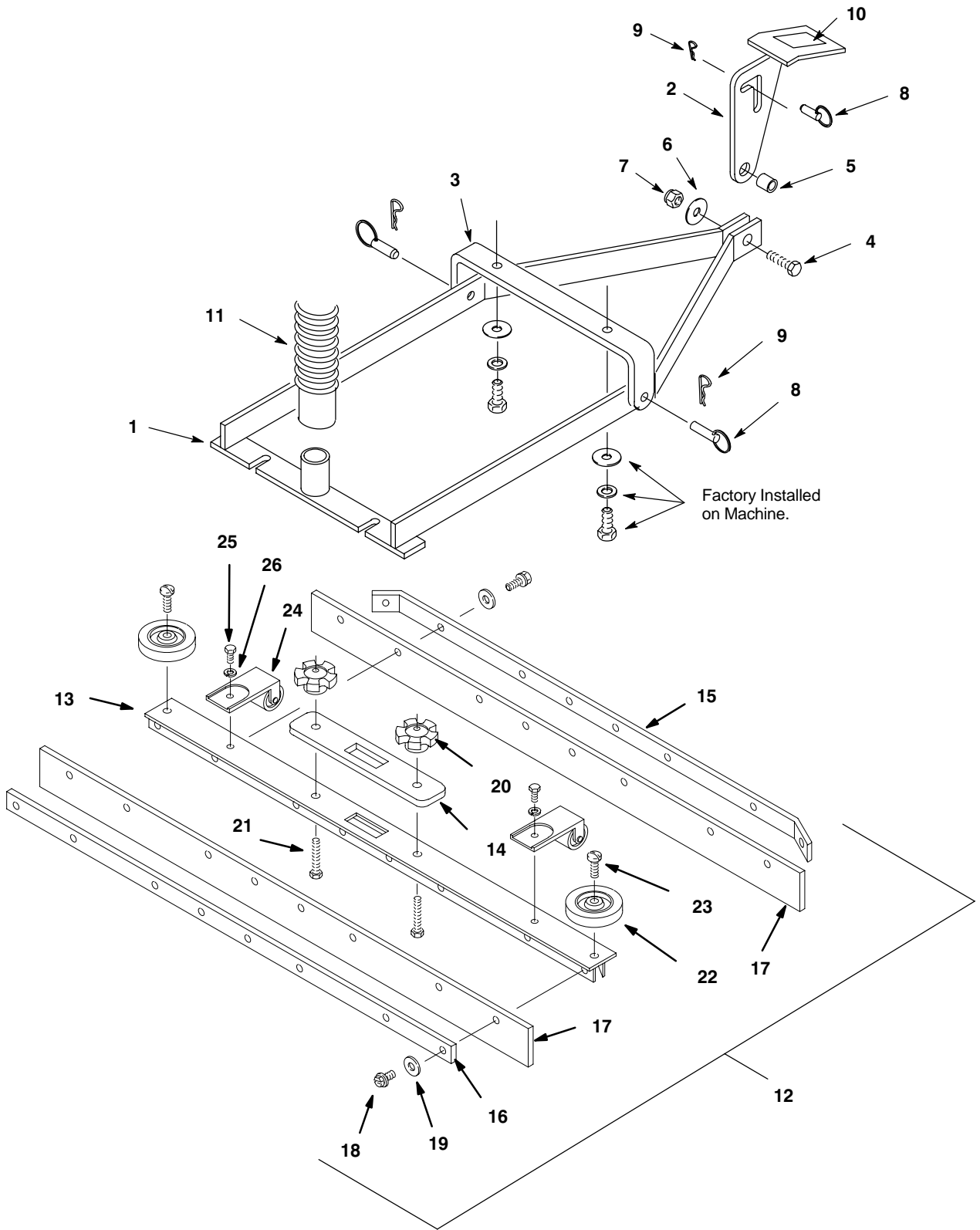
REF	PART #	DESCRIPTION	QTY.
1	160482	HOSE, VACUUM	1
2	140308	CLAMP	2
3	700461	VALVE, GATE	1
4	100096	GASKET,VAC TUBE	1
5	100381	ELBOW,VAC TUBE	1
6	140837	SCREW, 10-24X3/8	4
7	140018	WASHER, LOCK	4
8	230334	HANDLE, AIR VALVE	1
9	230493	SPACER	1
10	230338	BRACKET, AIR VALVE	2
11	210231	VALVE, DRAIN	1
12	100302	HOUSING, VACUUM MOUNT	1
13	140501	NUT, LOCK	3
14	140000	WASHER, FLAT	3
15	100038	GASKET, VACUUM MOTOR	1
16	130415	MOTOR, VACUUM 120V	1
	190161	BRUSH, CARBON (2/PK)	1
17	2998.28	SCREW, 1/4-20X3 1/2	3
18	100095	GASKET, VACUUM MOTOR	1
19	230331.BK	PLATE, COVER (16 GAL. MODEL)	1
20	140900	SCREW, 10-24X3/4	1
21	230746	BRACKET, AXLE	2
22	140195	SCREW, 1/4-20X1/2	2
23	140003	WASHER, FENDER	2
24	103060	WHEEL	2
25	140063	WASHER, FLAT	2
26	230317	AXLE (16 GAL. MODEL)	1
27	140519	NUT,, KEP	3
28	140195	SCREW, 1/4-20X1/2	6
29	140000	WASHER, FLAT	6

REF	PART #	DESCRIPTION	QTY.
∇30	701059	ASM., DRAIN HOSE PUMPOUT	1
▲31	160458	HOSE, DRAIN	1
▲32	140307	CLAMP	1
▲33	230357	DOWNSPOUT, PVC 1 1/2"	1
34	140899	SCREW, 10-24X1 1/4	1
35	140011	WASHER, FLAT	1
36	140950	PLUG, DRAIN HOSE	1
37	230394.BK	BRACKET, DRAIN HOSE	1
38	140825	SCREW, #6X1/2	3
39	140522	NUT, LOCK 3/8-16	1
40	607498	TAPE, BUMPER 1/16X1 (3.2 FT)	1
41	102531	FILTER, FOAM	1
42	608620	HOUSING, FILTER, GREEN	1
43	160459	HOSE, VAC W/CUFF	1
	230905	TUBE, INLET	1
44	140012	WASHER, FLAT	4
45	140341	SCREW, #10X1	4
46	140504	NUT, COUDUIT	1
47	140000	WASHER, FENDER	3
48	602744	SCREEN, GATEVALVE	1

∇ ASSEMBLY

▲ INCLUDED IN ASSEMBLY

## SQUEEGEE KIT BREAKDOWN



**SQUEEGEE KIT BREAKDOWN**

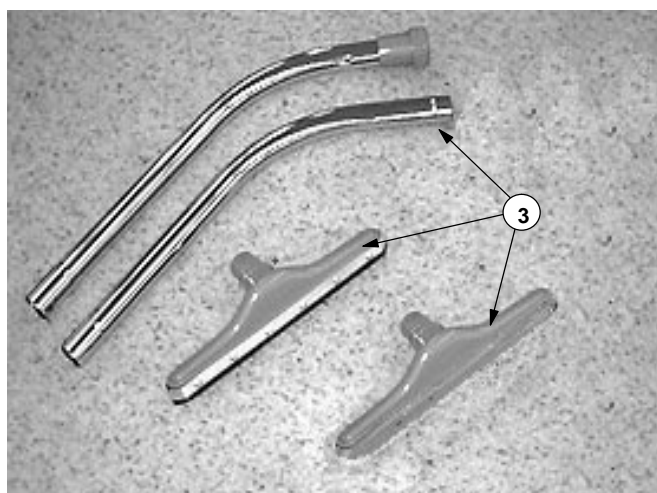
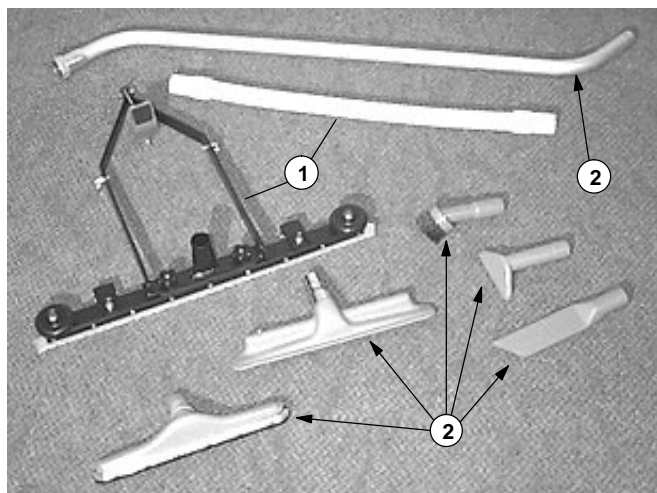
REF	PART #	DESCRIPTION	QTY.
▽	190108	SQUEEGEE KIT 67CM (26 IN)	1
	190972	SQUEEGEE KIT 84CM (33 IN)	1
	190958	SQUEEGEE KIT 99CM (39 IN)	1
▲1	230453.BK	WELDMENT, SQUEEGEE LIFT	1
▲2	230456	PEDAL, LIFT	1
▲3	230454	BRACKET, SQUEEGEE MOUNT	1
▲4	140232	SCREW, 3/8-16X1-1/4	1
▲5	140925	SPACER, 3/16	1
▲6	140028	WASHER, FLAT 3/8	1
▲7	140515	NUT, LOCK NYLON 3/8-16	1
▲8	630258	PIN, CLEVIS	3
▲9	612254000	PIN, HAIR	3
▲10	102560	PAD, NONSTICK	1
▲11	160462	HOSE, VACUUM 1.5 X 84CM (33 IN)	1
▲12	602831	ASM., SQUEEGEE 67CM (26 IN)	1
	603494	ASM., SQUEEGEE 84CM (33 IN)	1
	603496	ASM., SQUEEGEE 99CM (39 IN)	1
▲13	230727.BK	WELDMENT, SQUEEGEE 67CM (26 IN)	1
	230682.BK	WELDMENT, SQUEEGEE 84CM (33 IN)	1
	230692.BK	WELDMENT, SQUEEGEE 99CM (39 IN)	1

REF	PART #	DESCRIPTION	QTY.
▲14	100150	GASKET	1
▲15	230725.BK	PLATE, REAR 67CM (26 IN)	1
	230669.BK	PLATE, REAR 84CM (33 IN)	1
	230685.BK	PLATE, REAR 99CM (39 IN)	1
▲16	230723.BK	PLATE, FRONT 67CM (26 IN)	1
	230670.BK	PLATE, FRONT 84CM (33 IN)	1
	230686.BK	PLATE, FRONT 99CM (39 IN)	1
▲17	603659	BLADE, SQUEEGEE 67CM (26 IN)	2
	603661	BLADE, SQUEEGEE 84CM (33 IN)	2
	603662	BLADE, SQUEEGEE 99CM (39 IN)	2
▲18	140890	SCREW, 10-24X1/2	18-28
▲19	140018	WASHER, #10 INT LOCK	18-28
▲20	27257	KNOB, SQUEEGEE	2
▲21	140221	SCREW, 5/16-18X1-1/4	2
▲22	630450	WHEEL	2
▲23	140799	SCREW, 5/16-18X1-1/2	2
▲24	700844	ASM., SQUEEGEE ROLLER	2
▲25	140226	SCREW, 5/16-18X5/8	2
▲26	140015	WASHER, LOCK	2

▽ ASSEMBLY

▲ INCLUDED IN ASSEMBLY

# OPTIONAL ACCESSORIES



REF	PART #	DESCRIPTION	QTY.
1	190108	KIT, 66CM (26 IN) SQUEEGEE	1
	190972	KIT, 84CM (33 IN) SQUEEGEE	1
	190958	KIT, 99CM (39 IN) SQUEEGEE	1
2	16593	VKIT, ACCESSORY TOOL	1
	6108.1	▲TWO PIECE WAND	1
	6117	▲DUSTING BRUSH	1
	6057	▲10CM (4 IN) UPHOLSTERY TOOL	1
	6170	▲CREVICE TOOL	1
	14043	▲41CM (16 IN) FLOOR TOOL	1
	13840	▲SQUEEGEE TOOL	1

REF	PART #	DESCRIPTION	QTY.
3	190142	VKIT, ACCESSORY TOOL	1
	190722	▲TWO PIECE WAND	1
	603840	▲36CM (14 IN) CARPET TOOL SCALLOPED FACE	1
	13840	▲36CM (14 IN) SQUEEGEE TOOL	1

▽ ASSEMBLY

▲ INCLUDED IN ASSEMBLY